



[Manuals.plus](#) /

> [Dazlen](#) /

> Dazlen P100 GPS Drone with 2K Camera Instruction Manual

Dazlen P100

Dazlen P100 GPS Drone with 2K Camera Instruction Manual

Model: P100 | Brand: Dazlen

INTRODUCTION

This manual provides essential information for the safe operation and maintenance of your Dazlen P100 GPS Drone. Please read these instructions thoroughly before operating the drone to ensure proper function and to prevent damage or injury. Keep this manual for future reference.

WHAT'S IN THE BOX

Verify that all components are present upon unboxing:

- GPS Drone
- 4.5" Screen Remote Controller
- Carrying Bag
- 8 Propellers (4 installed, 4 spares)
- 4 Protective Guards
- 2 Type-C Charging Cables
- Screws & Screwdriver
- User Manual



Image: All components included in the Dazlen P100 drone package.

SETUP

1. Charging Batteries

Ensure both the drone batteries and the remote controller are fully charged before first use. Use the provided Type-C charging cables.

- **Drone Batteries:** Insert the 3.7V 2000mAh modular batteries into the drone. Charging time is approximately 2-3 hours per battery.
- **Remote Controller:** The remote controller has a built-in 1000mAh rechargeable battery. Charging time is approximately 3 hours.

3.7V 2000mAh Modular Battery

Features two removable battery that provides 40 minutes of flight time. The modular battery design allows for quick and easy battery replacement, providing a safer flight experience.

Type-C Charging 40 Mins Flight Time 2-3H Charging Time

Image: Dazlen P100 drone with its modular batteries, highlighting charging and flight time.

2. Propeller Installation

Attach the propellers according to the markings on the drone arms and propellers. Ensure they are securely fastened using the provided screws and screwdriver. Install protective guards if desired for added safety, especially for beginners.

3. Remote Controller Phone Holder Setup (Optional)

If you plan to use a smartphone with the remote controller for additional features (though not required for basic operation):

1. Fully extend the phone holder from the top of the remote.
2. Raise the holder upward.
3. Tilt the holder to a 60-degree angle with the remote.
4. Proceed to mount your mobile phone securely.

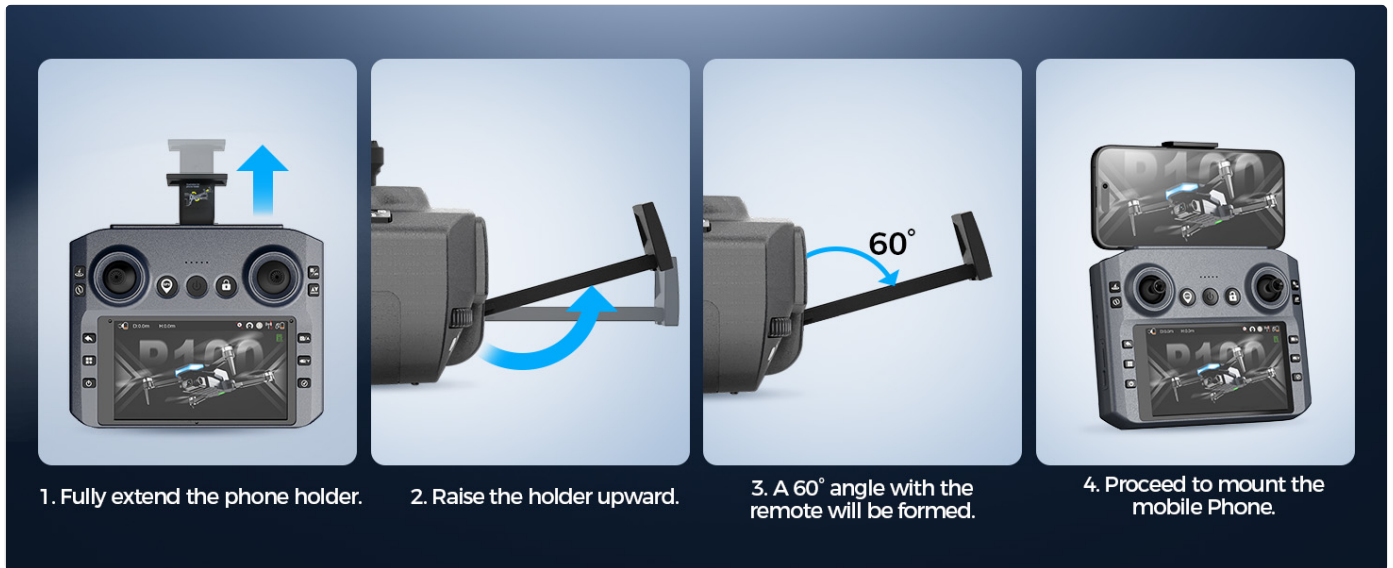


Image: Step-by-step guide for attaching a phone to the remote controller.

4. SD Card Insertion

The drone and remote controller both have SD card slots (supporting up to 64GB, Micro SD card not included). Insert an SD card into the drone to record photos and videos directly. The remote's SD card slot is for storing flight data or additional media.



Image: Detail of the SD card slot on the drone.

OPERATING INSTRUCTIONS

1. Power On/Off

- **Drone:** Press and hold the power button on the drone until indicator lights illuminate.
- **Remote Controller:** Press and hold the power button on the remote controller until the screen activates.

2. Pairing and Calibration

Before each flight, ensure the drone and remote are paired and calibrated. Follow the on-screen instructions on the remote controller. For GPS mode, find an area clear of metal objects for accurate calibration.

3. Takeoff and Landing

- **One-Key Takeoff:** Press the one-key takeoff button on the remote controller. The drone will automatically ascend to a safe height.
- **One-Key Landing:** Press the one-key landing button. The drone will descend and land automatically.

4. Flight Modes and Features

The Dazlen P100 offers various intelligent flight modes:

- **2 Speed Modes:** Switch between low and high speeds for different flying environments and skill levels.
- **GPS Auto Return:** Features One-Key Return, Low Battery Return, and Signal Loss Return to bring the drone back to its takeoff point.
- **Follow Me:** The drone will automatically follow the remote controller or a designated subject (via app).
- **Waypoint Fly:** Plan a custom flight path on the app, and the drone will follow it autonomously.
- **Circle Fly:** The drone will fly in a circular path around a designated point.
- **Gesture Selfie:** Use specific hand gestures to trigger photo or video capture.
- **Stable Hover:** Utilizes GPS for outdoor positioning and optical flow for indoor or low-signal hovering, ensuring stable flight.
- **Headless Mode:** Activate by long-pressing the unlock button on the remote controller. In this mode, the drone's orientation is relative to the pilot, simplifying control.

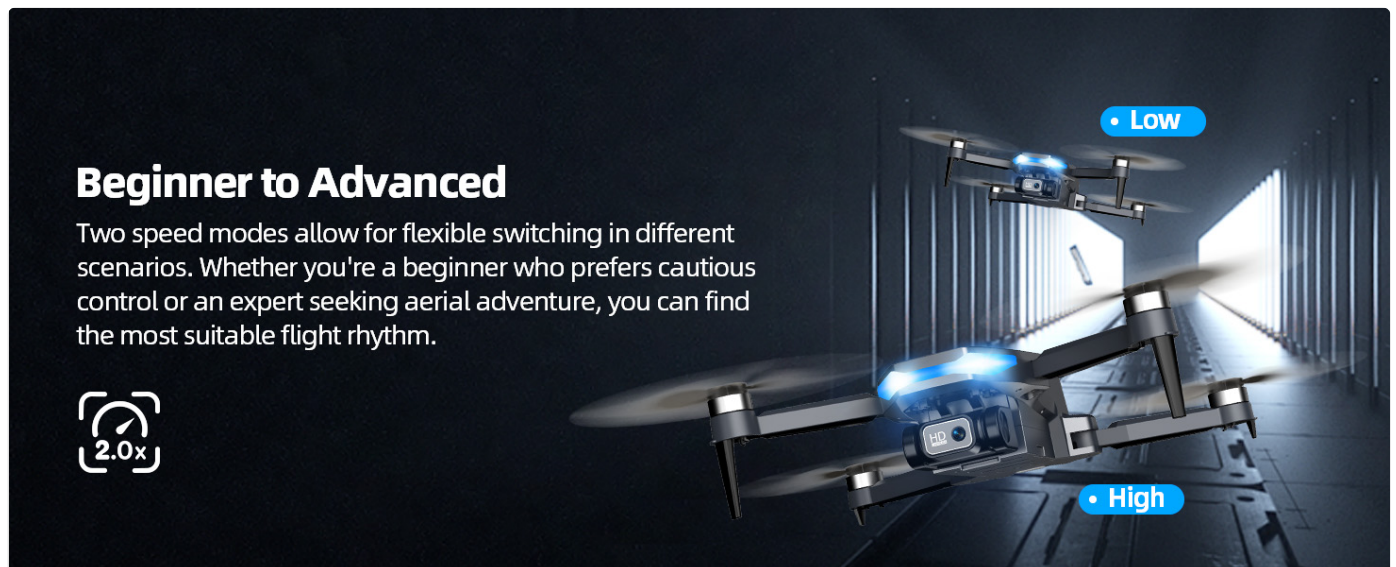


Image: Illustration of the drone operating in two speed modes.



Image: The drone demonstrating GPS Auto Return functionality.

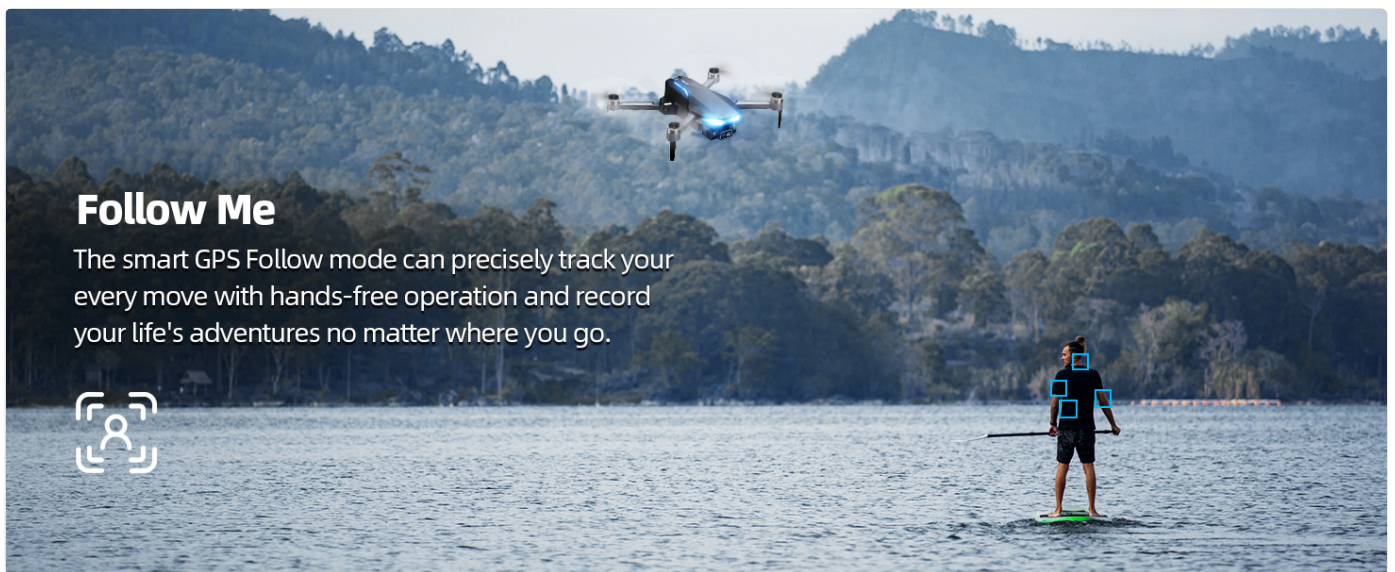


Image: The drone utilizing the Follow Me mode.

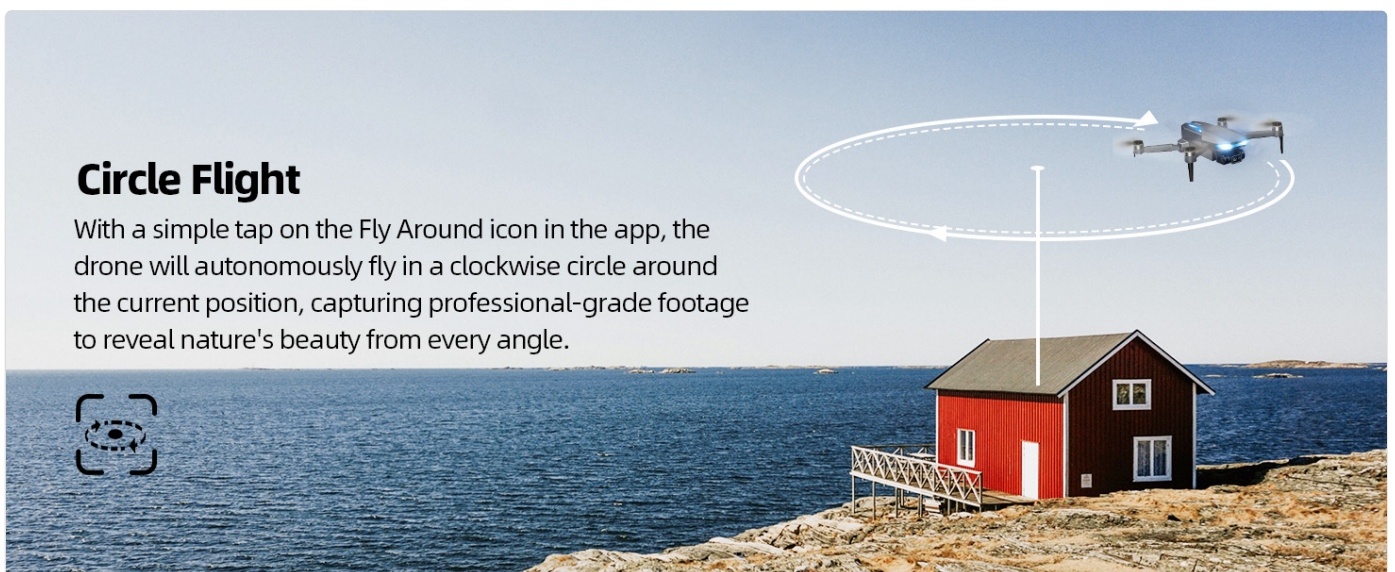


Image: The drone performing a Circle Flight maneuver.

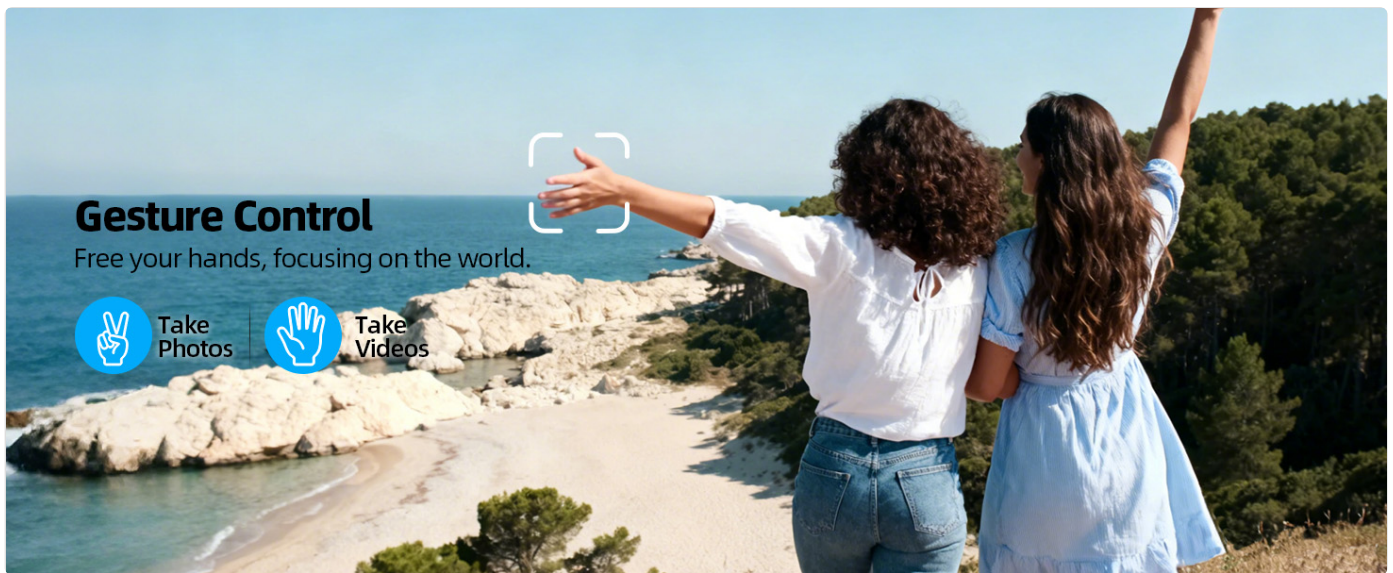


Image: Demonstrating Gesture Control for photo and video capture.

5. Camera Operation

The drone is equipped with a 2K Ultra HD camera with Electronic Image Stabilization (EIS) and a 90° adjustable motorized lens.

- Adjust the camera angle using the remote controller during flight.
- Capture photos and videos via dedicated buttons on the remote or through gesture control.
- The remote controller's 4.5" LCD screen provides a live FPV (First Person View) feed with zero transmission delay.

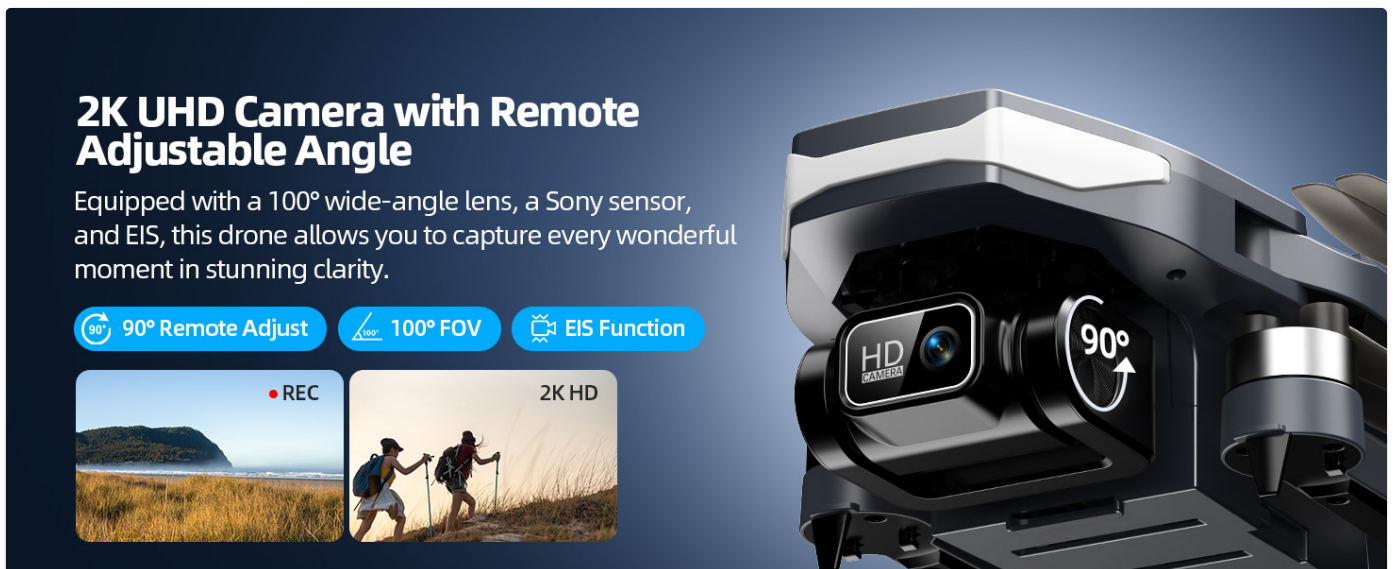


Image: Detail of the 2K UHD camera with adjustable angle and EIS.



Image: The remote controller with its integrated 4.5-inch screen for live FPV.

6. Indoor Flight Considerations

For indoor flight, long-press the GPS button on the remote controller to deactivate the GPS function. This is necessary for stable indoor operation.

7. Video Demonstrations

Video: Demonstrating the 2K camera and 4.5-inch screen remote controller features.

Video: Overview of the functional GPS drone exploring various environments.

Video: Demonstrating indoor and outdoor flight capabilities and capturing moments.

Video: Guide on how to easily fly and control the drone for all skill levels.

Video: Introduction to starting your aerial journey with the portable GPS drone.

MAINTENANCE

1. Cleaning

Regularly clean the drone body, propellers, and camera lens with a soft, dry cloth. Avoid using liquids or solvents that could damage electronic components.

2. Propeller Replacement

Inspect propellers for damage (cracks, bends) before each flight. Replace any damaged propellers immediately using the spare parts provided and the screwdriver. Ensure correct propeller orientation (A and B markings) during installation.

3. Battery Care

- Store batteries in a cool, dry place away from direct sunlight.
- Do not overcharge or over-discharge batteries.
- If not used for extended periods, charge batteries to approximately 50% capacity every three months.

TROUBLESHOOTING

If you encounter issues, refer to the following common solutions:

Problem	Possible Cause	Solution
Drone does not take off or flies erratically.	Improper calibration, weak GPS signal, damaged propellers, low battery.	Perform full calibration in an open area. Ensure strong GPS signal (for outdoor flight). Check and replace damaged propellers. Charge batteries fully.
No live video feed on remote screen.	Weak 5G FPV connection, drone not powered on, remote not paired.	Ensure drone and remote are powered on and paired. Fly within recommended transmission range. Check for interference.
Drone drifts during indoor flight.	GPS function active indoors.	Long-press the GPS button on the remote to deactivate GPS for indoor flight.
Short flight time.	Batteries not fully charged, aged batteries.	Ensure batteries are fully charged before each flight. Consider replacing old batteries if performance degrades significantly.
Remote controller rattles.	Internal component loose.	Contact customer support for assistance.

For further assistance, refer to the contact information in the Warranty & Support section.

SPECIFICATIONS

Feature	Detail
Brand	Dazlen
Model Name	P100
Video Capture Resolution	2K
Connectivity Technology	5G
Item Weight	1.5 Pounds (approx. 680g)
Battery Capacity	2000 mAh (per battery)
Total Flight Time	Up to 40 minutes (with 2 batteries)
Control Type	Remote Control
Optical Sensor Technology	Optical Flow
Item Dimensions (L x W x H)	8"L x 5"W x 3"H (folded)
Special Features	2 Speeds, GPS Auto Return, Follow Me, Waypoint Fly, Circle Fly, Gesture Selfie, Brushless Motor, EIS, 90° Adjustable Camera
FAA Registration	Not required (weighs less than 250g)

Brushless Motor

Built-in a powerful brushless motor that supports faster speed, higher efficiency, better control, lower maintenance, and superior wind resistance, ensuring stable flight even in challenging conditions.

 Stronger Power

 Low Noise

 Long Lifespan



Image: Detail of the drone's brushless motor.

Stable Hover

Locate precisely and hover at a certain height for a safe flight.



GPS Positioning
(Outdoor)



Optical Flow
Positioning
(Indoor)



Image: The drone demonstrating stable hover using GPS and Optical Flow positioning.

Foldable and Lightweight

FAA Registration and Remote ID are not Required

< 249g

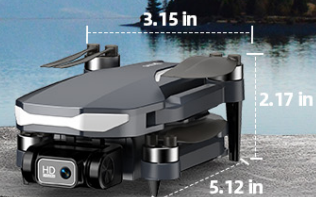


Image: The drone's lightweight design, indicating no FAA registration is required.

Warranty Information

Your Dazlen P100 drone comes with a 1-Year Manufacturer Warranty. Please retain your proof of purchase for warranty claims.

Customer Support

For technical assistance, troubleshooting, or warranty inquiries, please contact Dazlen customer support:

- **Phone:** (888) 742-6588
- **Email:** support@dazlen.com

Our support team is available to help you with any questions or concerns regarding your Dazlen P100 drone.



Image: Dazlen customer support team ready to assist.