

Airversa RDX

Airversa RDX Smart Waterless Diffuser: Instruction Manual

Model: RDX

1. IMPORTANT SAFETY INSTRUCTIONS

Please read all instructions carefully before using the Airversa RDX Smart Waterless Diffuser. Retain this manual for future reference.

- Use only the provided DC-12V/1A power adapter.
- Do not immerse the diffuser in water or any other liquid.
- Keep out of reach of children and pets.
- Place the diffuser on a stable, flat surface.
- Do not block the mist outlet.
- Avoid direct contact with essential or fragrance oils, as they may cause irritation. In case of contact, rinse thoroughly with water.
- Unplug the device before cleaning or when not in use for extended periods.
- Do not attempt to disassemble or repair the unit yourself. Contact customer support for assistance.

2. PRODUCT OVERVIEW

The Airversa RDX Smart Waterless Diffuser utilizes advanced cold diffusion technology to disperse essential or fragrance oils into an ultra-fine dry mist without heat or water. This preserves the oil's purity and ensures a powerful, whisper-quiet scent experience for areas up to 1500 sq ft.

Key Features:

- **Waterless Cold Diffusion:** Transforms oils into a fine mist without heat or water.

- **App Control:** Manage settings, schedules, and intensity via the Sleekpoint App (Bluetooth connection).
- **Large Capacity:** 300 mL oil reservoir for extended use.
- **Wide Coverage:** Effectively scents spaces up to 1500 sq ft.
- **Integrated Display:** Visual countdown for diffusion and pause intervals.
- **Adjustable Night Light:** Embedded ambient light with adjustable brightness.
- **Durable Design:** Premium aluminum shell for longevity and aesthetic appeal.



Image: The Airversa RDX Diffuser in a living room, showcasing its main features and coverage area.

Seamless App Control

Your scent, scheduled via Bluetooth

  20 ft

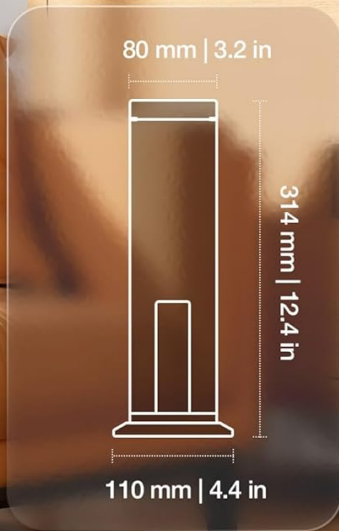


Image: Seamless App Control via Bluetooth, showing the Sleekpoint App interface and diffuser dimensions.

All-in-One Panel

with Touch Buttons

Visual Countdown



DIFFUSING



PAUSING



NIGHT LIGHT BUTTON

- Tap to adjust brightness
- Press and hold to turn off



BLUETOOTH INDICATOR

- Connection Status



POWER BUTTON

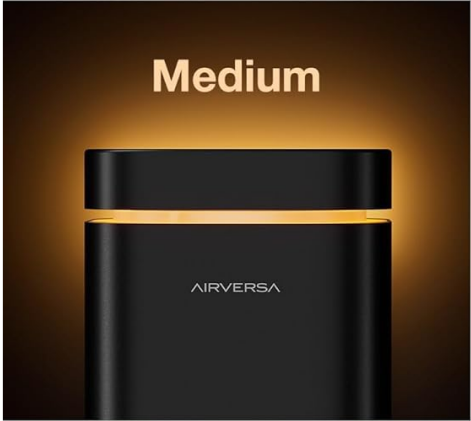
- Tap to power on
- Press and hold to power off

Image: Detailed view of the diffuser's control panel with touch buttons and visual indicators.

Low



Medium



High



Embedded Night Light

Ajustable for Restful Evenings



Image: The embedded night light with adjustable brightness levels (Low, Medium, High).

Mistake-proof Nozzle Design

Intuitive One-Way Fit

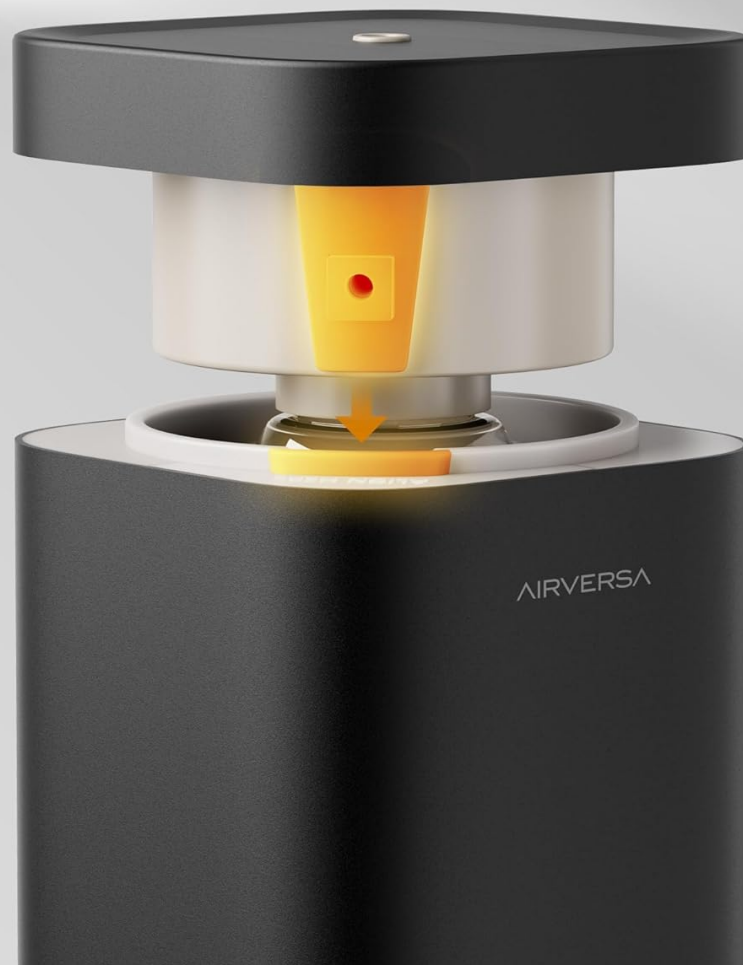


Image: The mistake-proof nozzle design ensuring intuitive one-way fit for oil bottles.

3. PACKAGE CONTENTS

Verify that all items are present in your package:

- Airversa RDX Waterless Diffuser
- Charging Cable (DC-12V/1A Power Adapter)
- User Manual (this document)

4. SETUP

4.1 Initial Placement

Place the diffuser on a flat, stable surface in the desired area. Ensure it is away from direct sunlight, heat sources, and out of reach of children and pets.

4.2 Filling the Oil Reservoir

1. Gently lift the nozzle assembly out of the top of the diffuser.

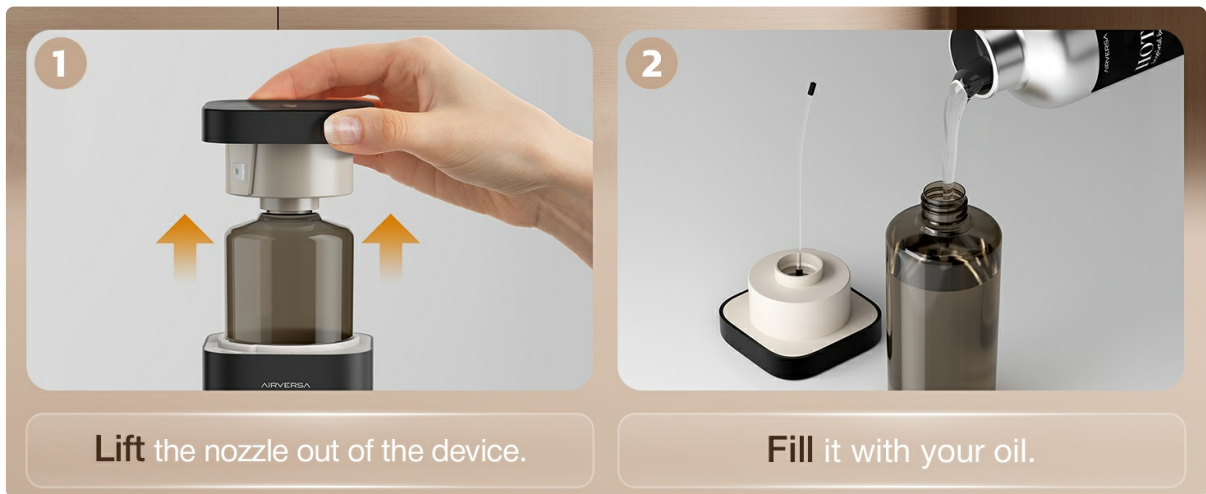


Image: Lift the nozzle out of the device.

2. Unscrew the cap from your essential or fragrance oil bottle. Carefully pour the oil into the diffuser's reservoir. Do not overfill.



Image: Fill the reservoir with your chosen oil.

3. Align the nozzle assembly with the opening and push it back into place. The design ensures a one-way fit.



Image: Push the nozzle back into place (One-way Fit).

4.3 Power Connection

Connect the provided charging cable to the diffuser and plug the adapter into a standard electrical outlet.

4.4 App Download and Pairing

1. Download the **Sleekpoint App** from the Apple App Store (iOS) or Google Play Store (Android OS).
2. Enable Bluetooth on your smartphone.
3. Open the Sleekpoint App and follow the on-screen instructions to pair with your Airversa RDX diffuser. The app will guide you through the connection process.

Video: A demonstration of setting up and controlling the Airversa RDX Smart Scent Diffuser using the mobile application.

5. OPERATION

5.1 Powering On/Off

- **To Power On:** Tap the Power Button (bottom button) on the diffuser's control panel.
- **To Power Off:** Press and hold the Power Button for a few seconds.

5.2 Using the Control Panel

The diffuser features an intuitive touch control panel:

- **Visual Countdown:** The circular display shows a real-time countdown for diffusion and pause intervals.
- **Night Light Button:** Tap to adjust the brightness of the ambient night light. Press and hold to turn it off.
- **Bluetooth Indicator:** Shows the connection status with the Sleekpoint App.

All-in-One Panel

with Touch Buttons

Visual Countdown



DIFFUSING



PAUSING



NIGHT LIGHT BUTTON

- Tap to adjust brightness
- Press and hold to turn off



BLUETOOTH INDICATOR

- Connection Status



POWER BUTTON

- Tap to power on
- Press and hold to power off



Image: Detailed view of the diffuser's control panel with touch buttons and visual indicators.

5.3 App Control Features

Once paired, the Sleekpoint App provides comprehensive control:

- **Scheduling:** Set up to 5 different schedules with specific diffusion and pause intervals. Toggle schedules on or off with a single tap.
- **Customization:** Adjust diffusion duration and pause intervals to match your room size and desired scent intensity.
- **Oil Calculator:** Simulate oil consumption and duration based on your settings.
- **Refill Reminders:** Set automated reminders to ensure continuous scenting.

Seamless App Control

Your scent, scheduled via Bluetooth

  20 ft

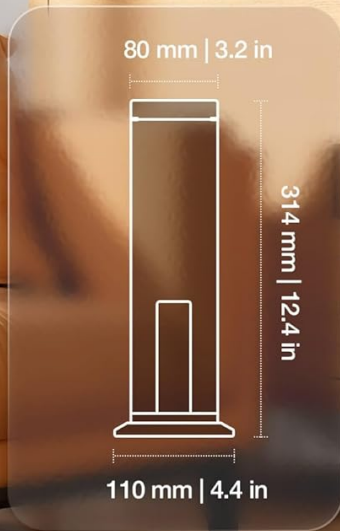


Image: Seamless App Control via Bluetooth, showing the Sleekpoint App interface.

5.4 Night Light Operation

The integrated night light can be adjusted via the control panel or the Sleekpoint App. Tap the Night Light button to cycle through brightness levels (Low, Medium, High) or press and hold to turn it off.



Embedded Night Light

Adjustable for Restful Evenings



Image: The embedded night light with adjustable brightness levels.

6. MAINTENANCE

6.1 Cleaning

Regular cleaning helps maintain optimal performance. Unplug the diffuser before cleaning.

- Wipe the exterior with a soft, damp cloth.
- To clean the nozzle and oil reservoir, remove the nozzle assembly. Empty any remaining oil. You may use a small amount of rubbing alcohol on a cotton swab to gently clean the nozzle and the inside of the reservoir. Allow to air dry completely before reassembling.
- Do not use abrasive cleaners or harsh chemicals.

6.2 Oil Replacement

When the oil level is low, follow the steps in Section 4.2 to refill the reservoir. The Airversa RDX is compatible

with most essential and fragrance oils on the market.



Compatible with
MOST
Essential & Fragrance Oils



Image: The diffuser is compatible with most essential and fragrance oils.

7. TROUBLESHOOTING

If you encounter issues with your Airversa RDX diffuser, refer to the following common problems and solutions:

Problem	Possible Cause	Solution
No mist is being diffused.	Oil reservoir is empty. Nozzle is clogged. Device is not powered on.	Refill the oil reservoir. Clean the nozzle as per Section 6.1. Ensure the device is plugged in and powered on.
App cannot connect to the diffuser.	Bluetooth is off on phone. Diffuser is out of range. App needs restart.	Ensure Bluetooth is enabled. Move closer to the diffuser (within 20 feet). Close and reopen the Sleekpoint App.
Scent is too weak/strong.	Diffusion intervals need adjustment.	Adjust diffusion duration and pause intervals via the Sleekpoint App to suit your preference.

If the problem persists after trying these solutions, please contact Airversa customer support.

8. SPECIFICATIONS

Feature	Detail
Brand	Airversa

Feature	Detail
Model Name	RDX
Capacity	300 Milliliters (10 fl oz)
Coverage Area	Up to 1500 Square Feet
Power Input	DC-12V/1A
Control Method	Sleekpoint App (Bluetooth), Touch Buttons
Material	Aluminum
Dimensions (L x W x H)	4.4"L x 4.4"W x 12.4"H
Automatic Shutoff	Yes
Smart Home Compatibility	Smart Home Compatible

9. WARRANTY AND SUPPORT

Airversa products are manufactured to high-quality standards and come with a limited warranty. For detailed warranty information, product support, or to purchase accessories, please visit the official Airversa store or contact our customer service team.

Airversa Store: [Visit the Airversa Store on Amazon](#)