

## Garvee JHS-A029A-05KR-D3

# Garvee 8,000 BTU Portable Air Conditioner User Manual

Model: JHS-A029A-05KR-D3

## 1. IMPORTANT SAFETY INSTRUCTIONS

---

Please read all instructions carefully before using this appliance and retain for future reference. Failure to follow these instructions may result in electric shock, fire, or serious injury.

- This appliance is for indoor use only. Do not use outdoors.
- Ensure the power supply matches the voltage specified on the rating label.
- Always plug the unit into a grounded three-prong outlet. Do not use extension cords or adapter plugs.
- Do not operate the unit with a damaged cord or plug. If the supply cord is damaged, it must be replaced by the manufacturer or a qualified service agent.
- Keep the unit upright for at least 2 hours before first use and after transportation to allow the refrigerant to settle.
- Do not block air inlets or outlets. Maintain a minimum clearance of 12 inches (30 cm) around the unit for proper airflow.
- Do not insert objects into the air vents.
- Unplug the unit from the power outlet before cleaning, servicing, or moving.
- Do not operate the unit in wet areas such as bathrooms or laundries.
- Supervise children and ensure they do not play with the appliance.

## 2. PRODUCT OVERVIEW

---

The Garvee 8,000 BTU Portable Air Conditioner is a versatile 3-in-1 unit designed to provide cooling, dehumidification, and fan-only operation for rooms up to 350 sq.ft. It features a compact design, quiet operation, and easy installation.

## Key Features:

- **3-in-1 Functionality:** Cool, Dehumidifier, and Fan modes.
- **Cooling Capacity:** 8,000 BTU for effective cooling in areas up to 350 sq.ft.
- **Temperature Range:** Adjustable cooling from 61°F to 88°F.
- **Dehumidification:** Removes up to 45 pints of moisture per day.
- **Quiet Operation:** Noise level below 50dB for minimal disturbance.
- **Sleep Mode:** Optimized settings for comfortable nighttime use.
- **24-Hour Timer:** Programmable on/off times.
- **Self-Evaporating System:** Reduces the need for manual water draining.
- **Washable Filter:** Easy to remove and clean for improved air quality and efficiency.
- **Portability:** Equipped with casters for easy movement between rooms.
- **Remote Control:** Convenient operation from a distance.

## Package Contents:

Before installation, ensure all parts are present and undamaged.

- Garvee Portable Air Conditioner Unit
- Exhaust Hose (1)
- Hose Connector (1)
- Window Kit (1) (Adjustable from 15.47 to 47.24 inches)
- Window Kit Adapter (1)
- Remote Control (1)
- User Manual (This document)

## PACKAGE INCLUDES



Image: Garvee Portable Air Conditioner and its included accessories.

### 3. SETUP AND INSTALLATION

Proper installation is crucial for the efficient operation of your portable air conditioner. Follow these steps carefully.

#### Placement:

- Place the unit on a flat, stable surface.
- Ensure there is at least 12 inches (30 cm) of space around the unit for adequate air circulation.
- Position the unit near a window for exhaust hose installation.

#### Window Kit Installation:

The adjustable window kit is designed for most vertical and horizontal sliding windows. Trimming may be necessary for smaller windows.

1. Connect the hose connector to one end of the exhaust hose.
2. Connect the window kit adapter to the other end of the exhaust hose.
3. Attach the hose connector to the exhaust air outlet on the back of the A/C unit.

4. Extend the adjustable window kit to fit your window opening and tighten the nuts.
5. Install the window kit into your window (horizontal or vertical slide window).
6. Insert the exhaust hose adapter into the window kit, ensuring a secure fit to prevent air leakage.

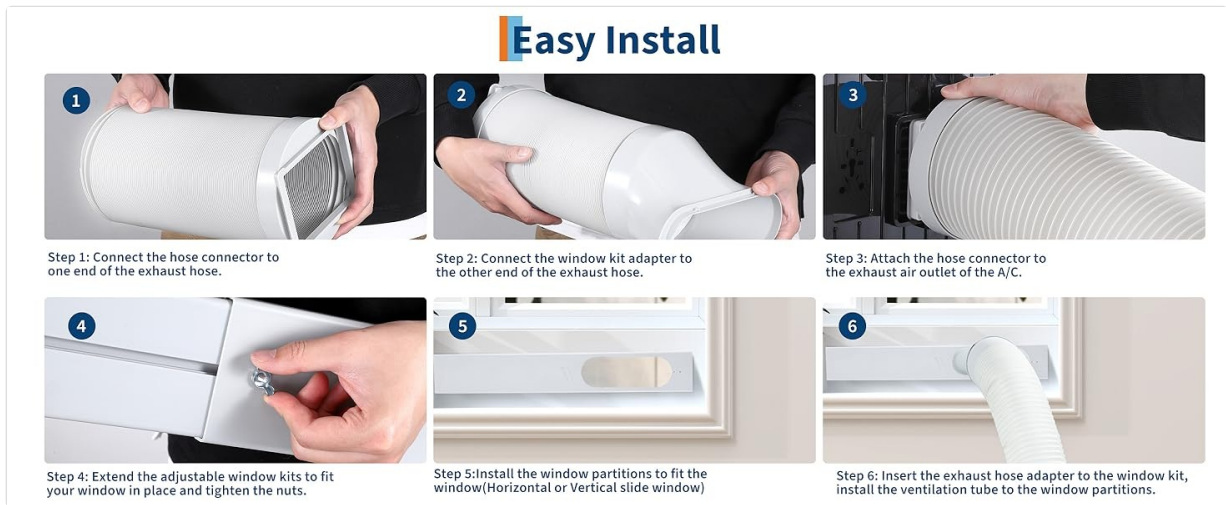


Image: Detailed steps for exhaust hose and window kit installation.



Image: Suitable window types for installation.

## 4. OPERATING INSTRUCTIONS

Your Garvee portable AC unit can be operated using the control panel on the top of the unit or the included remote control.

### Control Panel and Remote Control:

# Touch Panel & Remote Control

COOL, DEHUM, FAN SLEEP MODE



Image: Control Panel

# Quiet Cooling & Sleep mode

Advanced Noise Isolation System

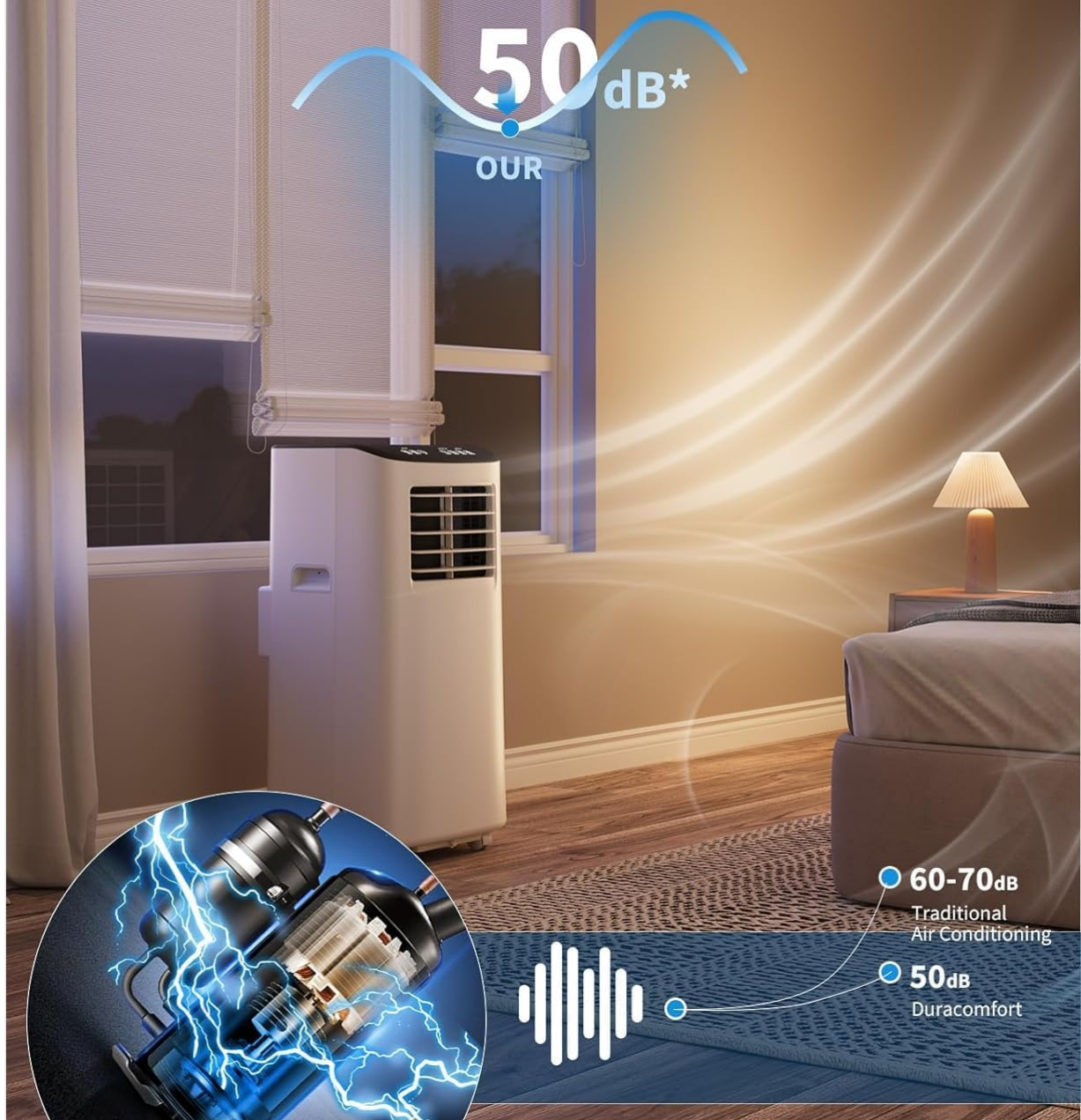


Image: Remote Control

- **Power Button:** Turns the unit ON or OFF.
- **Mode Button:** Cycles through Cool, Dehumidifier, and Fan modes.
- **Temperature Up/Down Buttons:** Adjusts the desired temperature in Cool mode (61°F-88°F).
- **Fan Speed Button:** Selects between High and Low fan speeds.
- **Timer Button:** Sets the auto-on or auto-off timer (1-24 hours).
- **Sleep Mode Button:** Activates sleep mode for quieter operation and gradual temperature adjustment during sleep.

## Operating Modes:

- **Cool Mode:** Provides powerful cooling. Set your desired temperature and fan speed. The unit will

cycle on and off to maintain the set temperature.

- **Dehumidifier Mode:** Removes excess moisture from the air. The fan speed is typically fixed in this mode. Continuous drainage is recommended for extended use.
- **Fan Mode:** Circulates air without cooling. Choose between high and low fan speeds.



Image: Overview of 3-in-1 modes.

## 5. MAINTENANCE

Regular maintenance ensures optimal performance and extends the lifespan of your air conditioner.

### Cleaning the Air Filter:

The washable filter should be cleaned every two weeks or more frequently depending on usage and air quality.

1. Turn off and unplug the unit from the power outlet.
2. Locate the air filter panel (usually at the back or side of the unit).
3. Gently slide out the filter.
4. Wash the filter under running water (warm, soapy water if heavily soiled).
5. Allow the filter to air dry completely before reinserting it into the unit.

### Water Drainage:

The unit features a self-evaporating system, which typically handles most condensate. However, in high humidity conditions or during dehumidifier mode, manual draining may be required.

- **Manual Drainage:** If the unit displays a 'Full Water' indicator, turn off the unit and unplug it. Place a shallow pan or bucket under the drain port (usually at the bottom rear). Remove the drain plug to allow water to flow out. Replace the plug once drained.
- **Continuous Drainage:** For continuous operation in high humidity or dehumidifier mode, attach the provided drain hose to the continuous drain port and route it to a floor drain or a large bucket. Ensure the hose is sloped downwards for gravity drainage.



Image: Self-Evaporation and Drainage System.

### Storage:

When storing the unit for an extended period:

- Drain all accumulated water from the unit.
- Clean the air filter.
- Run the unit in fan-only mode for a few hours to dry the interior.
- Unplug the power cord and store it neatly.
- Store the unit in an upright position in a dry, cool place, away from direct sunlight.

## 6. TROUBLESHOOTING

If you encounter issues with your portable air conditioner, refer to the following common problems and solutions:

Problem	Possible Cause	Solution
Unit does not turn on	No power, power cord damaged, water tank full	Check power connection, inspect cord/plug, drain water tank.
Unit does not cool effectively	Air filter dirty, exhaust hose not properly installed, room too large, doors/windows open, temperature setting too high	Clean air filter, ensure exhaust hose is sealed, close doors/windows, lower temperature setting.
Unit is noisy	Unit not on a level surface, air filter dirty, internal components vibrating	Place on a level surface, clean air filter. If noise persists, contact support.
Water leakage	Drain plug loose, continuous drain hose clogged or improperly connected, unit tilted	Check drain plug, ensure drain hose is clear and properly connected, place unit on a level surface.
Remote control not working	Batteries dead, remote out of range, sensor blocked	Replace batteries, ensure remote is within range and pointed at the unit's sensor.

Problem	Possible Cause	Solution
---------	----------------	----------

If the problem persists after attempting these solutions, please contact Garvee customer support.

## 7. SPECIFICATIONS

Feature	Specification
Brand	Garvee
Model Name	JHS-A029A-05KR-D3
Cooling Power	8,000 BTU
Floor Area Coverage	Up to 350 Square Feet
Dehumidification Capacity	45 Pints/Day
Noise Level	51 Decibels
Product Dimensions (D x W x H)	12.92"D x 12.56"W x 26.74"H
Item Weight	49.6 Pounds
Voltage	115.0 V
Wattage	699.0 W
Seasonal Energy Efficiency Ratio (SEER)	6.5
Installation Type	Window
Controller Type	Remote Control
UPC	824126204643

## 8. WARRANTY AND SUPPORT

Your Garvee Portable Air Conditioner is covered by a **3-Year Manufacturer Warranty** from the date of purchase.

This warranty covers defects in materials and workmanship under normal use. It does not cover damage resulting from misuse, accident, alteration, neglect, unauthorized repair, or improper installation.

For warranty claims, technical support, or any questions regarding your product, please contact Garvee customer service. Have your model number (JHS-A029A-05KR-D3) and proof of purchase ready.

**Customer Support:** Please refer to the contact information provided on the Garvee official website or your purchase documentation.

© 2026 Garvee. All rights reserved.