

[Manuals.plus](#) /

> [Qubo](#) /

> QUBO Smart Door Lock Essential (2025 Edition) User Manual

## Qubo HLR01BL1

# QUBO Smart Door Lock Essential (2025 Edition) User Manual

Model: HLR01BL1

## INTRODUCTION

---

The QUBO Smart Door Lock Essential (2025 Edition) provides advanced security and convenient access to your home. This manual outlines the features, installation, operation, and maintenance of your smart door lock to ensure optimal performance and security.

## KEY FEATURES

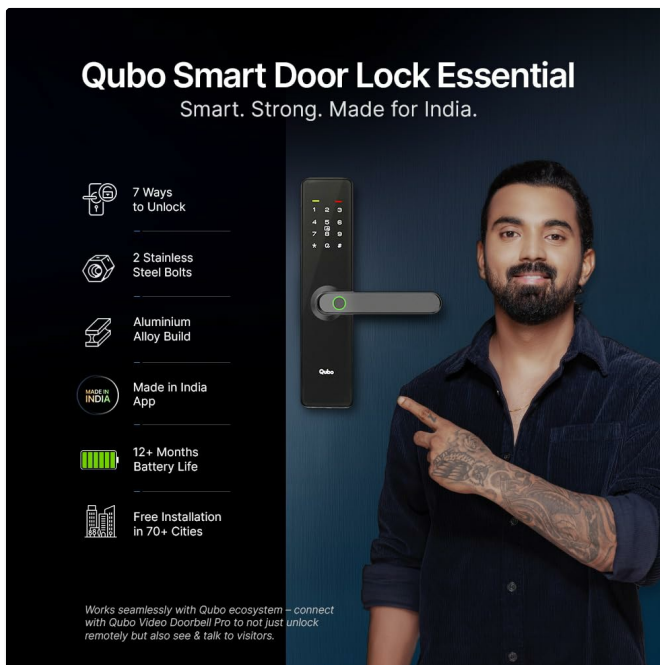
---

- **7-Way Unlocking:** Fingerprint, Passcode, Qubo App (Bluetooth), OTP, RFID Access Card, Mechanical Key, Voice Unlock (with compatible Qubo devices).
- **Enhanced Security:** Dual stainless steel bolts, wrong password alerts, privacy mode, auto-locking, and decoy digits.
- **Durable Design:** Crafted from aluminum alloy with a premium matte finish.
- **Long Battery Life:** Over 12 months of performance with 4 AA batteries, including low-battery alerts and USB power bank jumpstart.
- **Smart Connectivity:** Manage access and view entry logs via the Qubo Mobile App.

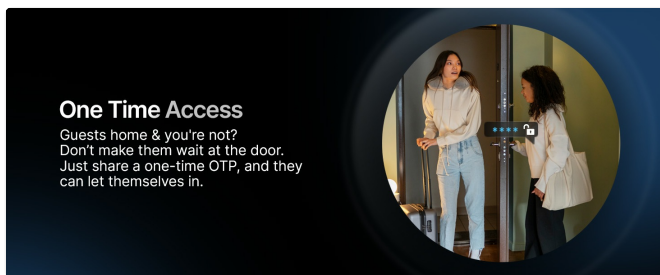
## UNLOCKING METHODS

---

The QUBO Smart Door Lock Essential offers multiple ways to unlock, providing flexibility and convenience.



This image illustrates the seven different methods available to unlock the Qubo Smart Door Lock Essential, including fingerprint, passcode, and app control.

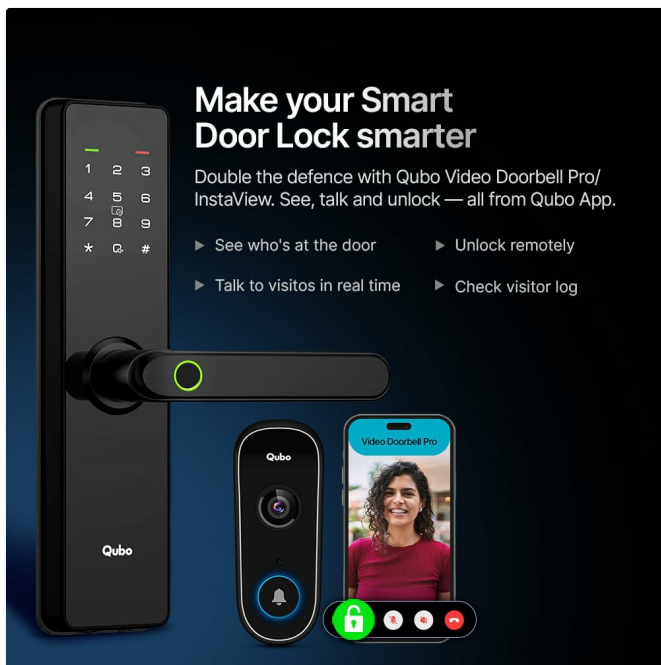


This image demonstrates the one-time access feature, allowing temporary entry for guests via a shared OTP.

1. **Fingerprint:** Register up to 100 fingerprints for quick and secure access using Cortex Technology.
2. **Passcode:** Use a secure PIN code for entry.
3. **Qubo App (Bluetooth):** Unlock your door directly via the Qubo mobile application when within Bluetooth range.
4. **OTP (One-Time Password):** Generate temporary passwords for guests or service providers.
5. **RFID Access Card:** Use the provided RFID cards for convenient tap-to-unlock functionality.
6. **Mechanical Key:** A traditional key is included for emergency manual unlocking.
7. **Voice Unlock:** Integrate with Amazon Alexa for voice-activated unlocking (requires Qubo Video Doorbell Pro, InstaView, or Wi-Fi Lock Gateway, sold separately).

## INSTALLATION

The QUBO Smart Door Lock Essential is designed for easy installation on wooden doors with a minimum thickness of 3 cm. It is not compatible with double-door entrances.



This image provides details on door compatibility, including dimensions and suitable door types for installation.

**Free Installation in 70+ Cities & Trust of Hero Quality Service**

Size (Inches - H x L x W) - 9.6 x 2.9 x 1

Ideal for Wooden Doors only with thickness of 3 cm and above

Reversible Door Handles suitable for left and right handed doors

Not suitable for glass, metal & double doors

Alappuzha	Colombatore	Indore	Khorda	Noida	Ranchi
Agra	Dehradun	Jhajjar	Kolhapur	North 24 Parganas	Sangareddy
Ahmedabad	Delhi	Jaipur	Kolkata	Panchkula	Siliguri
Ambala	Ernakulam	Jalandhar	Krishna	Panipat	Sonapat
Amritsar	Faridabad	Jammu	Lucknow	Paighar	South 24 Parganas
Anand	Gandhinagar	Jamnagar	Ludhiana	Palwal	Surat
Bangalore	Gautam Buddha Nagar	Kamrup	Meerut	Patala	Thane
Barrackpore	Ghaziabad	Karnal	Modinagar	Patna	Thiruvananthapuram
Bhavnagar	Greater Noida	Kochi	Moga	Pune	Tiruvallur
Bhopal	Gurugram	Kottayam	Mohali	Rohtak	Vadodara
Bhubaneswar	Guwahati	Kurukshetra	Mumbai	Raigarh	Varanasi
Chandigarh	Howrah	Kanchipuram	Nagpur	Raipur	Vijaywada
Chennai	Hyderabad	Kanpur	Nellore	Rajkot	Vishakhapatnam

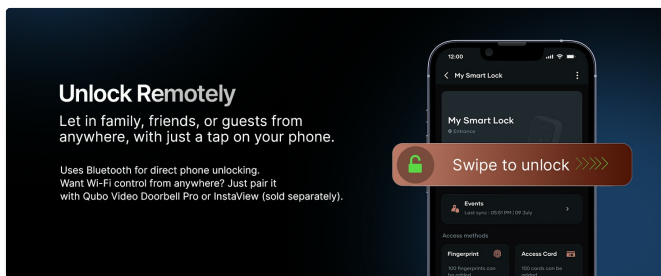
This image lists the numerous cities across India where Qubo offers free installation services for the smart door lock.

Free installation services are provided by Qubo in over 70 cities across India. Please refer to the included installation kit and contact customer support for scheduling professional installation.

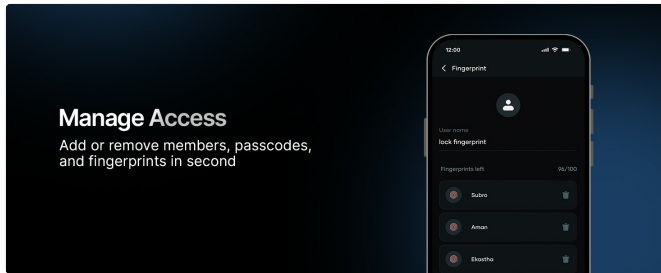
## OPERATING INSTRUCTIONS

### Mobile App Control

The Qubo Mobile App allows for comprehensive control and monitoring of your smart lock.



This image demonstrates how to remotely unlock the door using the Qubo app, allowing access for family or friends from anywhere.

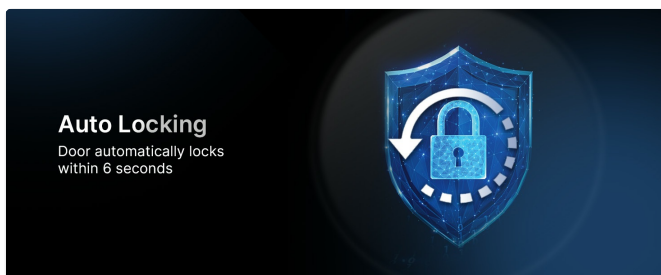


This image illustrates the access management interface within the Qubo app, where users can add or remove members, passcodes, and fingerprints.

- **Remote Unlock:** Unlock the door from anywhere using the Qubo App. For Wi-Fi control, pair with a Qubo Video Doorbell Pro or InstaView (sold separately).
- **Manage Access:** Easily add or remove users, fingerprints, and passcodes in seconds.
- **Entry Logs:** View detailed entry logs anytime to know who came in and when.

## Security Features

The lock incorporates several features to enhance your home's security.



This image highlights the auto-locking function, where the door automatically secures itself within 6 seconds of closing.

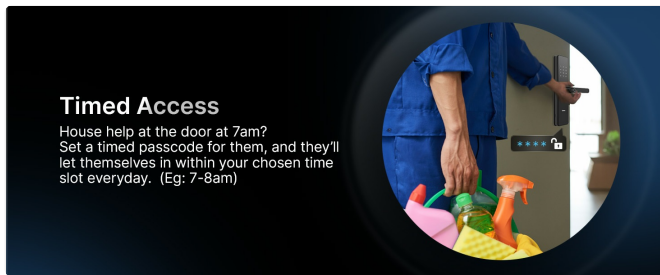


This image explains the spy-safe passcode feature, which allows users to enter random digits before and after their actual PIN to prevent code exposure.

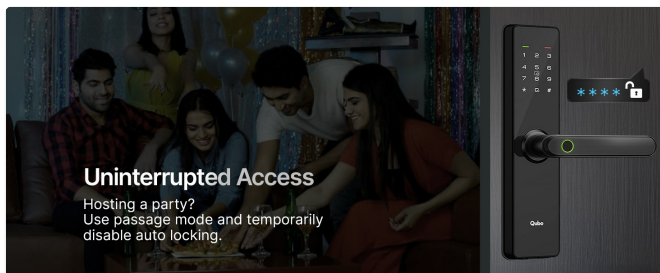
- **Wrong Password Alerts:** The device will lock down for 3 minutes after 5 failed attempts.
- **Privacy Mode:** Activate privacy mode for added security from inside the home.
- **Auto-Locking:** The door automatically locks within 6 seconds of closing.
- **Decoy Digits (Spy-Safe Passcode):** Enter random numbers before or after your actual PIN to prevent others from guessing your code.

## Flexible Access Sharing

Grant various types of access to suit your needs.



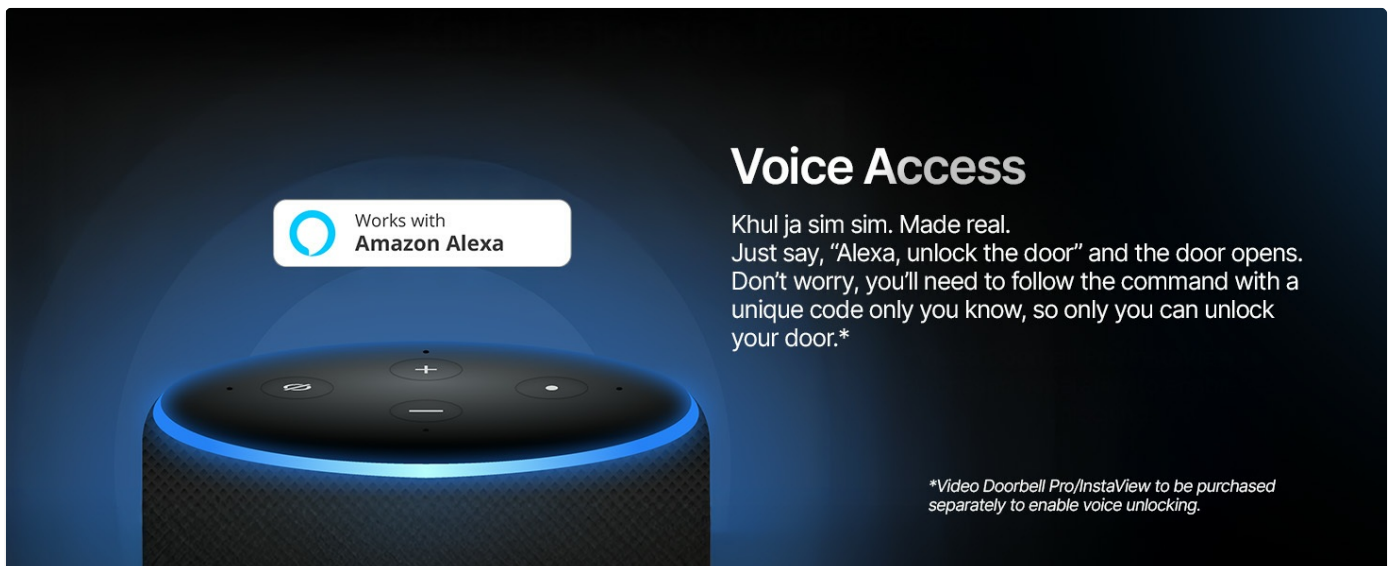
This image illustrates the timed access feature, allowing users to set specific time slots for house staff or other visitors to enter.



This image demonstrates the uninterrupted access feature, which temporarily disables auto-locking for events like parties.

- **Permanent Access:** Grant continuous access to family members.
- **Timed Access:** Set specific time slots for house staff or other regular visitors.
- **One-Time Guest Access:** Share a single-use OTP for temporary entry.
- **Passage Mode:** Temporarily disable auto-locking for uninterrupted access during gatherings.

## Voice Access



This image illustrates the voice access feature, allowing users to unlock the door using Amazon Alexa with a unique code. The Qubo Smart Door Lock Essential supports voice unlocking through Amazon Alexa. Say, "Alexa, unlock the door" followed by a unique code to open your door. This feature requires a Qubo Video Doorbell Pro, InstaView, or Wi-Fi Lock Gateway (sold separately).

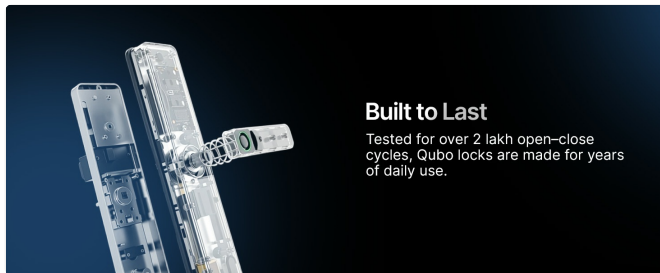
## DURABILITY AND RELIABILITY

---

The QUBO Smart Door Lock Essential is built to withstand daily use and various environmental conditions.



This image highlights the long battery life of over 12 months and the 2-year brand warranty.



This image illustrates the internal components and mentions that the lock is tested for over 2 lakh open-close cycles.

- **Battery Life:** Powered by 4 AA batteries, offering over 12 months of performance. Includes low-battery alerts and USB power bank jumpstart support for emergencies.
- **Sturdy Design:** Crafted from durable aluminum alloy with a premium matte finish. Equipped with a high-strength main bolt and a reinforced latch bolt for dependable protection.
- **Rigorous Testing:** Tested for over 2 lakh open-close cycles to ensure long-lasting strength.
- **Break-in Resistant:** Withstands up to 8000N of force, designed to resist break-in attempts.
- **Weather-Proof:** Tested to endure extreme heat, cold, humidity, and salt, from -20°C winters to 60°C summers.

## SPECIFICATIONS

Feature	Detail
Brand	Qubo
Model Number	HLR01BL1
Lock Type	Biometric, Keypad
Unlocking Methods	Fingerprint, Passcode, Qubo App (Bluetooth), OTP, RFID Card, Mechanical Key, Voice Unlock
Material	Aluminium
Dimensions (L x W x H)	24.5 x 5.8 x 15 Centimeters
Item Weight	1700 Grams
Battery Type	4 AA Batteries
Battery Life	12+ Months

Feature	Detail
Connectivity	Bluetooth
Door Compatibility	Wooden doors, min. 3 cm thickness (not for double-doors)

## WHAT'S IN THE BOX

---

Upon unboxing your QUBO Smart Door Lock Essential, you will find the following components:

- Smart Door Lock Unit
- Installation Kit (screws, mounting plates, etc.)
- Mechanical Keys
- RFID Access Cards
- User Manual

## MAINTENANCE

---

To ensure the longevity and optimal performance of your smart door lock, follow these maintenance guidelines:

- **Battery Replacement:** Replace all four AA batteries when the low-battery alert is triggered. Use high-quality alkaline batteries.
- **Cleaning:** Wipe the lock's exterior with a soft, dry cloth. Avoid abrasive cleaners or solvents that may damage the finish.
- **Mechanical Key:** Keep the mechanical keys in a safe, accessible location outside your home for emergency use.
- **Firmware Updates:** Regularly check the Qubo App for available firmware updates to ensure your lock has the latest features and security enhancements.
- **Fingerprint Sensor:** Keep the fingerprint sensor clean and dry for accurate recognition.

## TROUBLESHOOTING

---

If you encounter any issues with your QUBO Smart Door Lock Essential, refer to the following common solutions:

- **Lock Not Responding:** Check battery levels. If batteries are low, use a USB power bank for emergency jumpstart or replace batteries.
- **Fingerprint Not Recognized:** Ensure your finger is clean and dry. Re-register your fingerprint if the issue persists.
- **Passcode Entry Issues:** Verify the correct passcode is being entered. The lock will temporarily disable after multiple incorrect attempts.
- **App Connectivity Problems:** Ensure Bluetooth is enabled on your phone and you are within range. For remote access, confirm your Qubo gateway device is properly connected to Wi-Fi.
- **Door Not Locking/Unlocking Properly:** Check for any obstructions in the door frame or latch. Ensure the lock is correctly aligned with the strike plate.

For further assistance, please contact Qubo customer support.

## WARRANTY AND SUPPORT

---

The QUBO Smart Door Lock Essential comes with a **2-Year Brand Warranty** from the date of purchase. This warranty covers manufacturing defects and ensures reliable performance.

For any product-related queries, technical support, or warranty claims, please contact Qubo customer service:

- **Toll-free helpline number:** 9319095757
- **Manufacturer:** Hero Electronix Pvt. Ltd.
- **Manufacturer Address:** 503, Rectangle-1, D4, Saket District Center, New Delhi 110017

Qubo also provides pan-India installation and service support in over 70 cities.

