

ZIUTY T21

ZIUTY T21 Wireless Earbuds User Manual

Model: T21

1. INTRODUCTION

Thank you for choosing the ZIUTY T21 Wireless Earbuds. These earbuds are designed to provide a high-quality audio experience with advanced features such as a touchscreen charging case, Active Noise Cancellation (ANC), Environmental Noise Cancellation (ENC), and Bluetooth 5.3 connectivity. This manual will guide you through the setup, operation, and maintenance of your new earbuds.

What's in the Box

- T21 Wireless Earbuds
- Wireless Charging Case with Touchscreen
- USB-C Charging Cable
- Eartips (S/M/L sizes)
- User Manual

Method for the problem of volume and charging

Use an alcohol pad to clean the charging contacts and ear tip mesh—removing dust or earwax that might be affecting charging or sound volume.

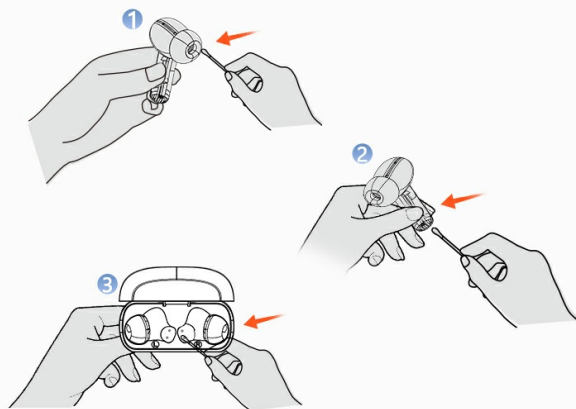


Image: Contents of the ZIUTY T21 Wireless Earbuds package.

2. PRODUCT OVERVIEW

The ZIUTY T21 earbuds offer a range of features designed for an enhanced listening experience.

Key Features

- **Smart Touchscreen Case:** Control music, volume, find earbuds, and more directly from the charging case.
- **Hybrid Active Noise Cancellation (ANC):** Blocks up to 40dB of ambient noise for immersive audio.
- **Transparency Mode:** Allows you to hear your surroundings while listening to audio.
- **Environmental Noise Cancellation (ENC):** Dual microphones reduce 98% of background noise during calls.
- **Studio-Quality Sound:** 14.2mm dynamic drivers deliver powerful bass and clear highs.
- **5 EQ Presets:** Customize your sound profile.
- **Extended Playtime:** Up to 8 hours on a single charge, and 40 hours with the charging case.
- **Fast Charging:** 10-minute charge provides 2 hours of music.
- **IPX7 Waterproof Rating:** Resistant to sweat and rain.
- **Bluetooth 5.3:** Stable connection with ultra-low latency (55 ms).

Multi-Function LCD Touch Screen

12 functional modes, 16 language options,
providing you with a rich and enjoyable usage experience

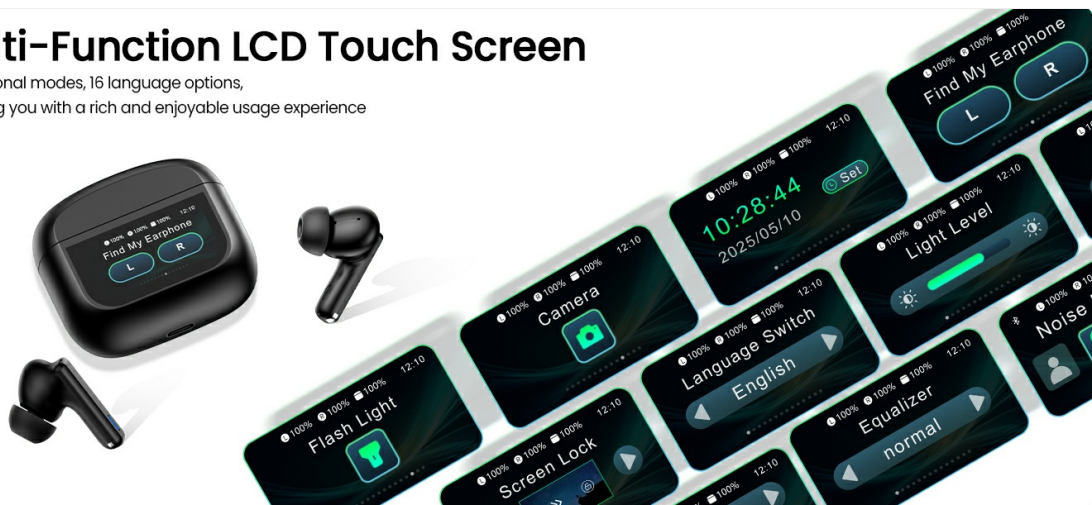


Image: Multi-function LCD Touch Screen on the charging case.

Active Noise-Cancelling

Boasting ANC+ENC dual noise reduction!
Enjoy immersive music undisturbed and
crystal-clear calls.



Image: Active Noise Cancellation (ANC) in action.

Your browser does not support the video tag.

Video: Overview of ZIUTY T21 Wireless Earbuds features, including touchscreen functions, noise reduction, and sound quality.

3. SETUP

Initial Charging

Before first use, fully charge the earbuds and the charging case. Connect the USB-C charging cable to the charging port on the case and a power source. The touchscreen display on the case will show the battery percentage.

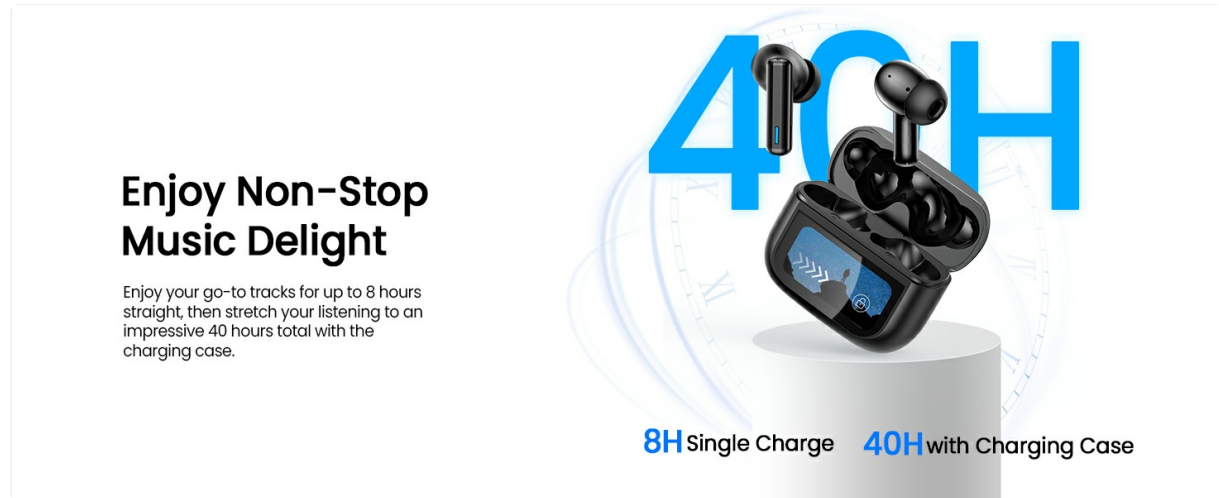


Image: Earbuds and charging case indicating long battery life.

Pairing with Your Device

1. Ensure the earbuds are in the charging case and the case has sufficient power.
2. Open the charging case. The earbuds will automatically enter pairing mode.
3. On your device (smartphone, tablet, etc.), go to Bluetooth settings.
4. Search for available devices and select "T21" from the list.
5. Once connected, you will hear a confirmation tone, and the device will show "Connected".

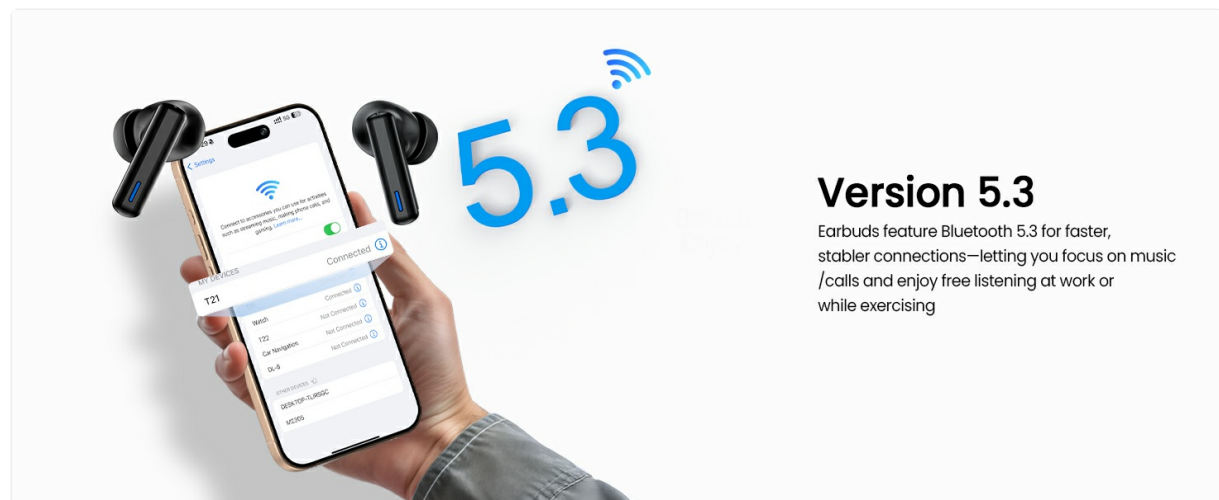


Image: Bluetooth 5.3 quick connect pairing process.

4. OPERATING INSTRUCTIONS

Touch Controls

The earbuds feature smart touch controls for various functions. Refer to the diagram below for common gestures:

Ear-Friendly Design

Wearing it will feel natural, comfortable and unconstrained.



4.2g Single

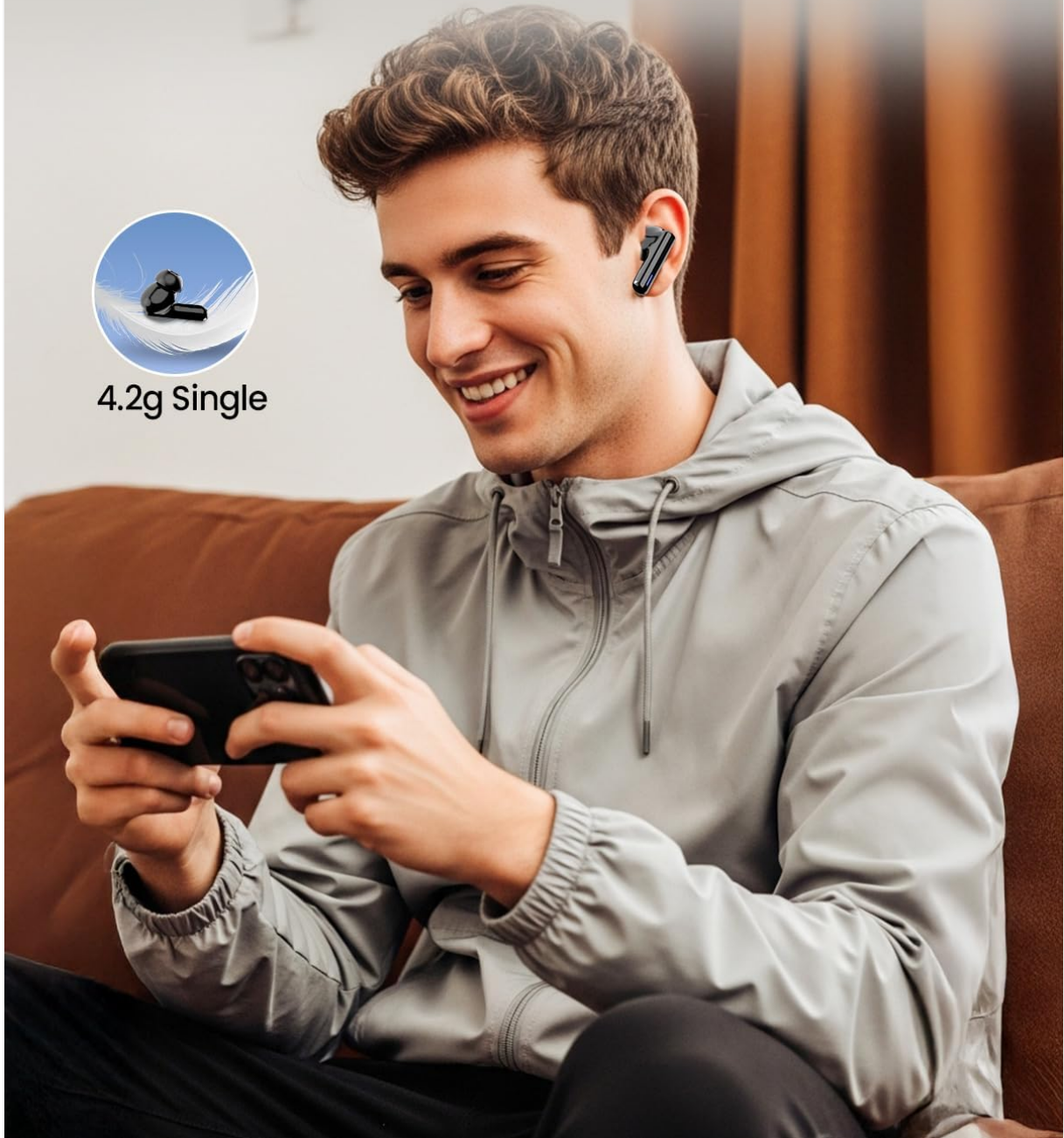


Image: Smart Touch Control functions on the earbuds.

- **Play/Pause:** Single tap on either earbud.
- **Next Track:** Double tap on the right earbud.
- **Previous Track:** Double tap on the left earbud.
- **Volume Up:** Triple tap on the right earbud.
- **Volume Down:** Triple tap on the left earbud.
- **Answer/End Call:** Single tap on either earbud.
- **Reject Call:** Long press on either earbud.
- **Activate Voice Assistant:** Long press on either earbud (when not on a call).
- **Switch ANC/Transparency Mode:** Long press on the left earbud.

ANC and Transparency Modes

The earbuds offer two primary noise control modes:

- **Active Noise Cancellation (ANC):** Reduces external noise, ideal for travel or noisy environments.
- **Transparency Mode:** Allows ambient sounds to pass through, keeping you aware of your surroundings.

Switch between these modes by long-pressing the left earbud or using the touchscreen on the charging case.

EQ Presets

Customize your listening experience with 5 Equalizer (EQ) presets available through the charging case touchscreen. Options include Normal, Rock, Classic, Pop, and Jazz.

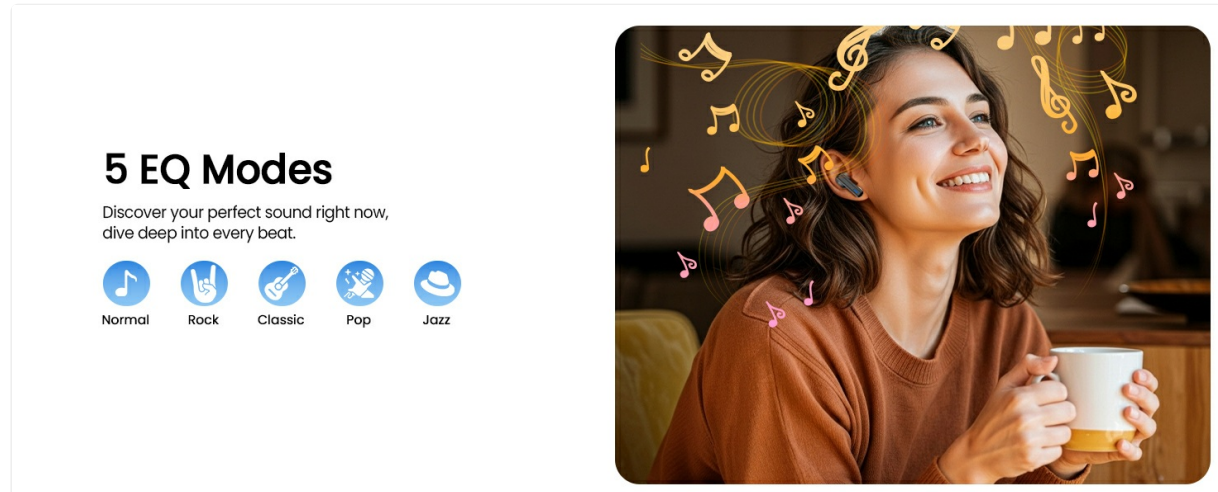


Image: 5 EQ presets for customized sound.

5. MAINTENANCE

Cleaning the Earbuds and Case

Regular cleaning helps maintain optimal performance and hygiene.

- Use a soft, dry, lint-free cloth to wipe the earbuds and charging case.
- For charging contacts and ear tip mesh, use an alcohol pad or a dry cotton swab to gently remove any dust or earwax that might affect charging or sound volume.
- Remove silicone eartips and clean them with mild soap and water, then dry thoroughly before reattaching.

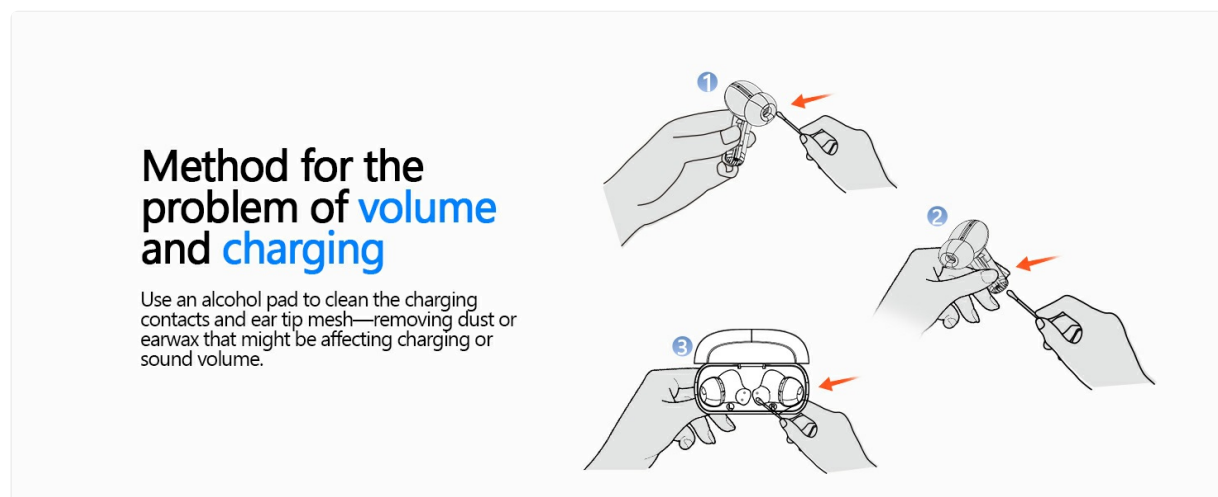


Image: Method for cleaning charging contacts and ear tip mesh.

Proper Earbud Removal

To prevent damage, follow the recommended removal gesture:

Easy Removal Gesture

Please follow the gestures shown in the following two pictures to easily take out the earbuds.

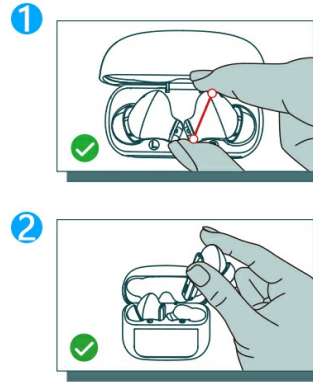


Image: Easy removal gesture for earbuds.

6. TROUBLESHOOTING

If you encounter issues with your ZIUTY T21 earbuds, try the following solutions:

- **Earbuds not pairing:** Ensure both earbuds are in the case, close the lid, then open it again to re-enter pairing mode. Check your device's Bluetooth settings and forget/remove previous pairings if necessary.
- **No sound from one earbud:** Place both earbuds back in the charging case, close the lid, and then take them out again. Ensure they are both charged.
- **Charging issues:** Clean the charging contacts on both the earbuds and inside the case using a dry cotton swab. Ensure the USB-C cable is securely connected.
- **Low volume:** Adjust the volume on both your connected device and via the earbuds' touch controls or the charging case touchscreen. Ensure eartips are clean and properly sealed in your ear.
- **Earbuds lost:** Use the "Find My Earphone" function on the charging case touchscreen to locate misplaced earbuds.

Never Lose Your Earbuds Again

Thanks to the charging case's earbud-finding feature, you can track down your buds in seconds.



Image: Using the 'Find My Earphone' feature.

7. SPECIFICATIONS

Model Name	T21
------------	-----

Bluetooth Version	5.3
Bluetooth Range	15 Meters
Audio Driver Size	14.2 mm
Noise Control	Active Noise Cancellation (ANC)
Call Noise Reduction	Environmental Noise Cancellation (ENC)
Earbud Playtime	Up to 8 hours
Total Playtime (with case)	Up to 40 hours
Water Resistance Rating	IPX7
Audio Latency	55 Milliseconds
Control Type	Touch Control
Charging Case Dimensions	5.66 cm (L) x 2.56 cm (W) x 4.94 cm (H)
Earbud Weight	Approx. 4.2g (single)

8. WARRANTY INFORMATION

The ZIUTY T21 Wireless Earbuds come with a **1-Year Warranty** from the date of purchase. This warranty covers manufacturing defects and ensures the product functions as intended under normal use. It does not cover damage caused by misuse, accidents, unauthorized modifications, or normal wear and tear.

Please retain your proof of purchase for warranty claims.

9. SUPPORT

For further assistance, technical support, or warranty inquiries, please refer to the contact information provided on the ZIUTY official website or your purchase platform. You may also consult the FAQ section on the product page for common questions and solutions.

We are committed to providing excellent customer service and support for your ZIUTY T21 Wireless Earbuds.