

Samsung UN85M80HAFXZA

Samsung 85-Inch M80H Series Mini LED Smart TV User Manual

Model: UN85M80HAFXZA

1. INTRODUCTION

This manual provides essential information for the safe and efficient operation of your Samsung 85-Inch Class Mini LED M80H Series Smart TV. Please read this manual thoroughly before using the product and retain it for future reference. The Samsung M80H Series TV features Mini LED technology with AI Mode, Supersize Picture Enhancer, Pure Spectrum Color, Motion Xcelerator 144Hz, Auto HDR Remastering, and the NQ4 AI Gen2 Processor for an enhanced viewing experience.

2. WHAT'S IN THE BOX

Verify that all components are present in the packaging:

- Samsung 85-Inch M80H Series TV
- Power Cable
- Remote Control (BT Simple Remote TM2280A with batteries)
- Stand
- User Manual
- Warranty Card

- **Antenna/Cable Input:** Connect an over-the-air antenna or cable TV signal.
- **Wireless Connectivity:** The TV supports Bluetooth 5.3 and Wi-Fi for wireless connections.

SAMSUNG

M80H

Powered by Samsung Vision AI 🌟

KEY FEATURES

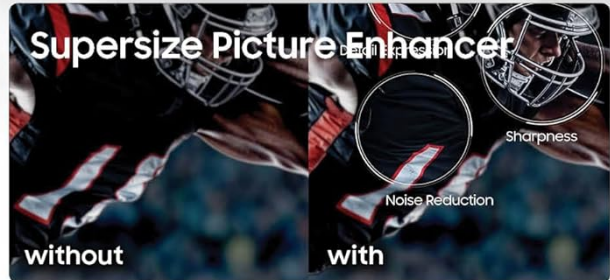


Figure 3.1: Rear Panel Connections. This image highlights the various input and output ports on the back of the TV, including HDMI (eARC), USB-A, Cable/ANT, HDMI 2, HDMI 3, and Ethernet.

4. OPERATING INSTRUCTIONS

4.1 Power On/Off

Connect the power cable to the TV and a wall outlet. Press the power button on the remote control or the TV to turn it on or off.

4.2 Remote Control

Use the included Bluetooth Simple Remote (TM2280A) to navigate the TV's interface, adjust volume, change channels, and access smart features. Ensure batteries are correctly inserted.

4.3 Smart TV Features (Tizen OS)

Your Samsung M80H TV runs on the Tizen operating system, offering a personalized smart TV platform. Access popular

internet applications such as Netflix, Amazon Prime, and YouTube. Alexa is built-in for voice control.

Vision AI Companion

Interact with your TV using voice commands to ask questions and access powerful AI features. The Vision AI Companion can provide information, recommend content, and help you find answers on the big screen.

Samsung TV Plus

Enjoy over 2,700 free streaming options, including more than 750 subscription-free channels, offering news, sports, movies, and more.

Gaming Hub

A central hub for your favorite games from consoles, cloud services, and gaming apps. It provides personalized recommendations and allows for fine-tuning game settings with the Game Bar, including ultra-wide aspect ratios (21:9 and 32:9). FreeSync Premium reduces stuttering and tearing for a smoother gaming experience.

AI Sound Controller & Object Tracking Sound Lite

The AI Sound Controller allows you to adjust the balance of voices, music, and sound effects. Object Tracking Sound Lite provides motion-based sound, where audio is precisely placed in space for an immersive experience. Q-Symphony enables the TV and a compatible soundbar to work together for enhanced audio.

Additional AI Features

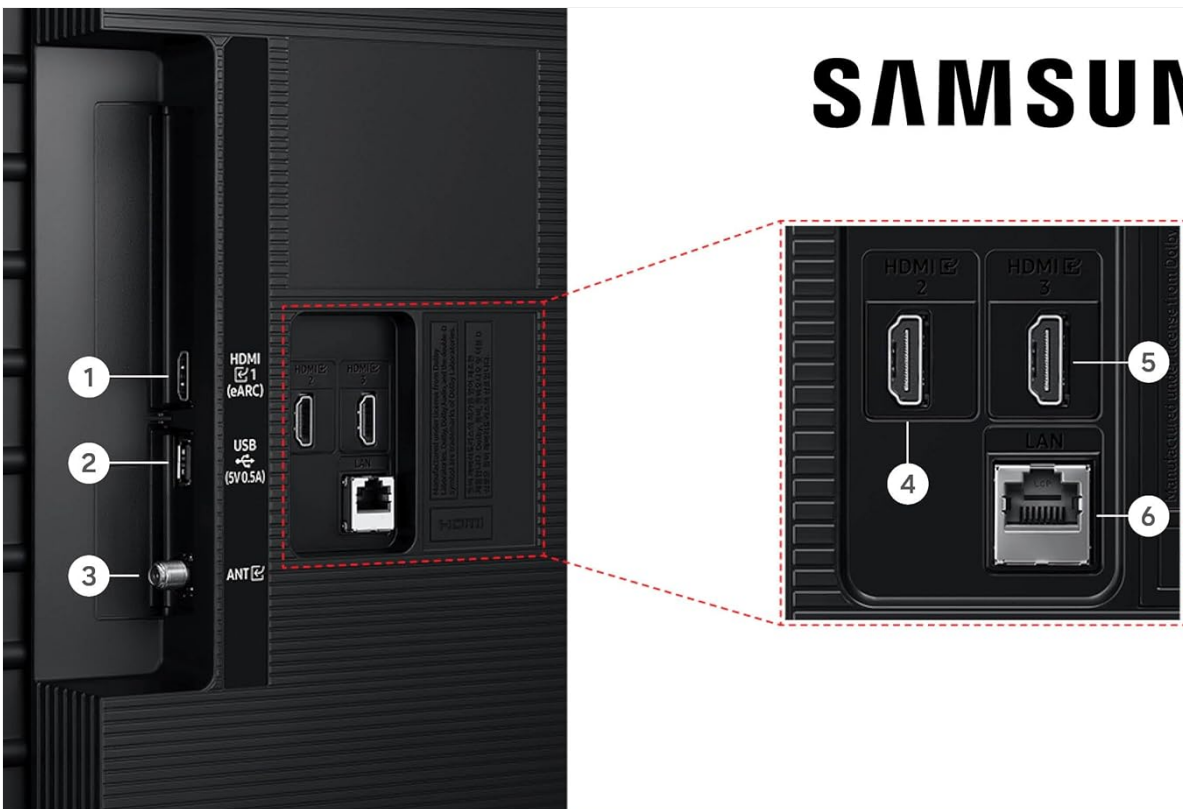
- **AI Customization Mode:** Automatically detects content type and optimizes picture settings.
- **Real Depth Enhancer:** Analyzes scenes and adjusts foreground contrast for lifelike depth.
- **Live Translate:** Identifies content language and provides instant subtitles in your preferred language.
- **Generative Wallpaper:** Create AI-generated on-screen images to match your mood or decor.
- **Pet Care:** AI detects pet barking and alerts you, allowing custom rules for content.
- **Storage Share:** Seamlessly share multimedia files across compatible Samsung devices.
- **AI Energy Mode:** Reduces power consumption by auto-adjusting brightness based on room lighting and user activity.
- **Karaoke:** Transform your TV into a karaoke stage with the Samsung Daily+ feature.


5. KEY FEATURES EXPLAINED

5.1 Mini LED with AI Mode


Mini LED technology utilizes thousands of tiny LEDs for precise backlighting, delivering brighter visuals with richer contrast. AI Mode intelligently analyzes and enhances each scene, improving clarity, color, and contrast for stunning image quality.


SAMSUNG




 **1 HDMI 1 (eARC)**
4K@144Hz
Enhanced audio return for high-quality sound and advanced formats

 **2 USB-A**
Standard rectangular port for power or media playback

 **3 Cable/ANT**
Connector for over-the-air antenna or cable TV signals

 **4 HDMI 2**
4K@144Hz
Transmits high-definition video and audio from external devices

 **5 HDMI 3**
4K@144Hz
Transmits high-definition video and audio from external devices

 **6 Ethernet**
Wired internet connection for streaming, updates, and smart features

Figure 5.1: Mini LED with AI Mode. This image illustrates the difference between traditional LED backlighting and Mini LED backlighting, highlighting the enhanced precision and control offered by Mini LEDs.

5.2 Supersize Picture Enhancer

This feature provides groundbreaking enhancements for larger screens, improving clarity, reducing noise, and delivering dramatic contrast. Content appears sharp and clear, optimized for the 85-inch display.



Mini LED with AI Mode

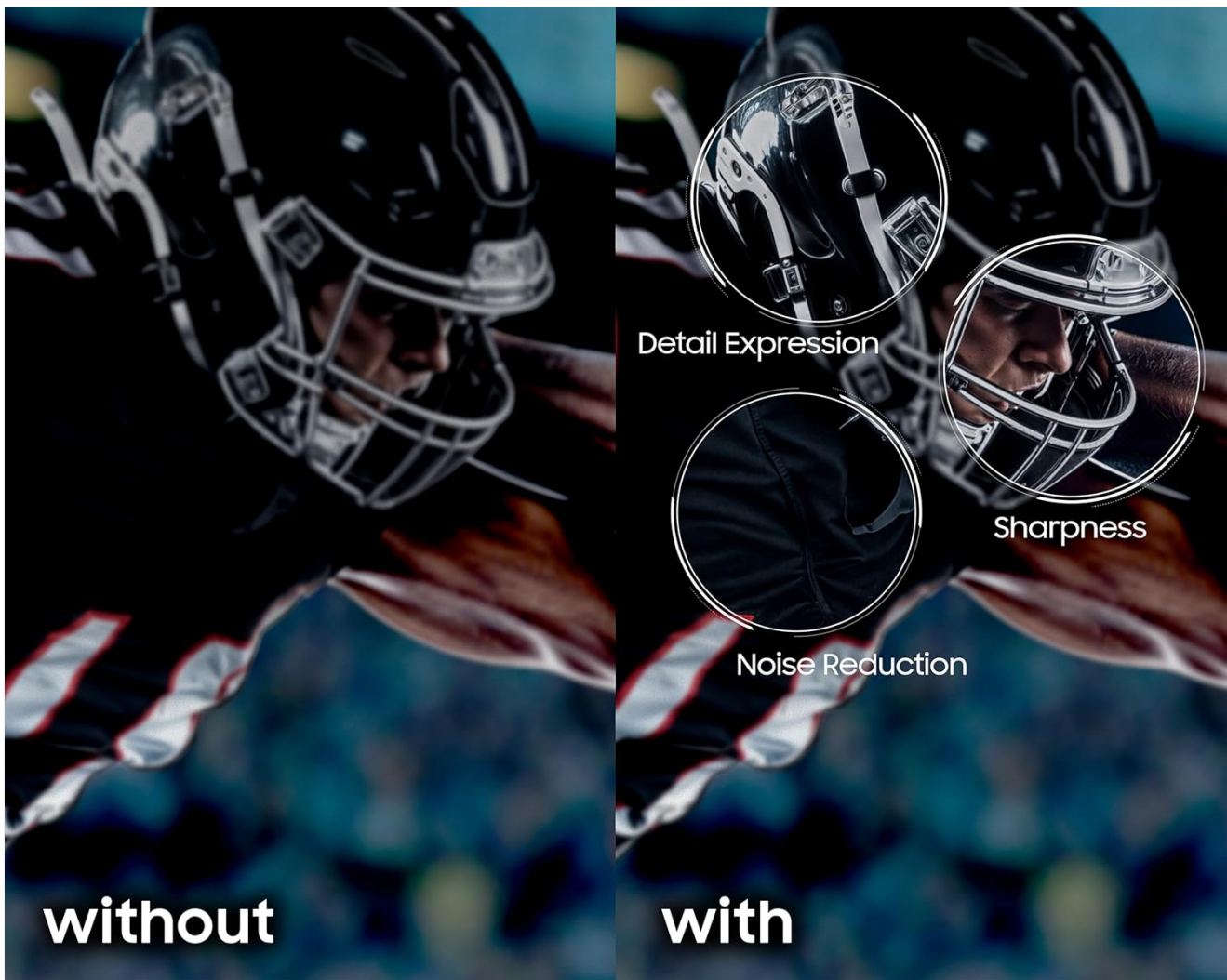
Experience a more vibrant picture with smaller, efficient Mini LEDs and AI that optimizes every scene*

*Utilizes AI-based formulas

Figure 5.2: Supersize Picture Enhancer. This visual comparison demonstrates how the Supersize Picture Enhancer improves sharpness, detail expression, and reduces noise in images.

5.3 Pure Spectrum Color

Experience one billion true-to-life colors, powered by advanced color technology and Mini-LED precision. This results in rich reds, deep blues, and vibrant greens, making every scene realistic.



Supersize Picture Enhancer

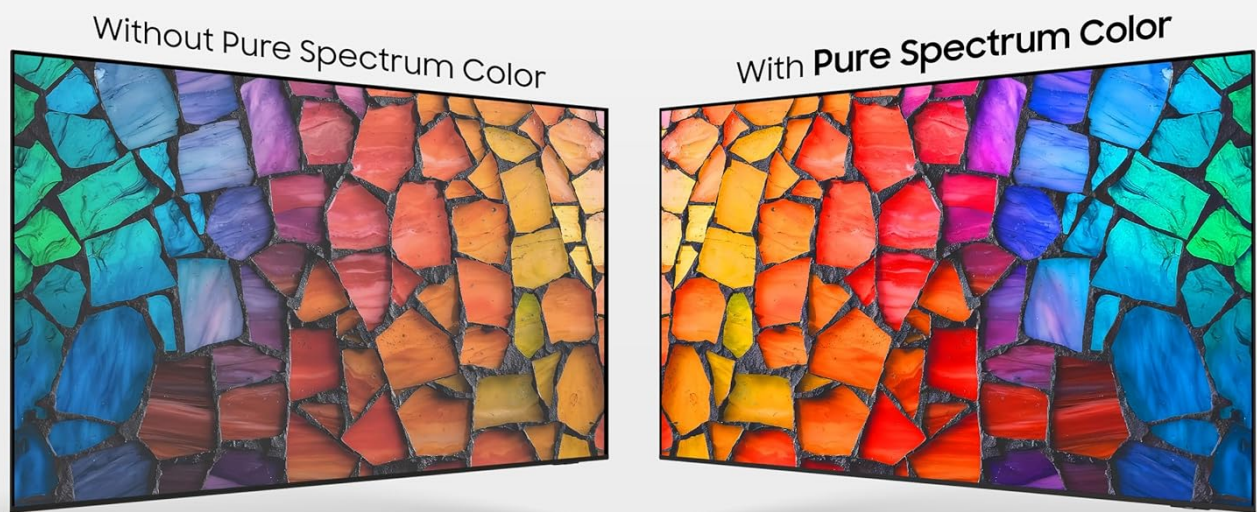
Get stunning clarity and reduced noise with advanced enhancements exclusively on our largest screens*

*Feature available on select 2026 & 2025 85" and larger models. See specific model product pages for information.

Figure 5.3: Pure Spectrum Color. This image compares a display without Pure Spectrum Color to one with it, showcasing the richer and more vibrant color reproduction.

5.4 Motion Xcelerator 144Hz

Achieve ultra-smooth performance for fast-paced games and sports with a 144Hz refresh rate. Variable Refresh Rate (VRR) technology dynamically matches the display to the game, eliminating stutter and tearing for optimal responsiveness. *Note: 4K 144Hz is only available with PC-connected games that support such specifications (PC graphics card required). Performance may vary.*



Pure Spectrum Color

A billion true-to-life colors

Figure 5.4: Motion Xcelerator 144Hz. This image visually represents the smooth motion capabilities of the TV, ideal for sports and gaming.

5.5 Auto HDR Remastering

This feature intelligently transforms Standard Dynamic Range (SDR) content to High Dynamic Range (HDR)-like quality. It delivers brighter highlights, more vibrant colors, and clearer details for a dazzling picture.



Motion Xcelerator 144Hz

Brings smooth motion to sports and tear-free gaming*

*4K 144Hz is only available with PC-connected games that support such specifications (PC graphic card required). Performance may vary.

Figure 5.5: Auto HDR Remastering. This visual demonstrates how SDR content is enhanced to HDR-like quality, showing brighter highlights, more vibrant colors, and clearer details.

5.6 NQ4 AI Gen2 Processor

The NQ4 AI Gen2 Processor is the advanced powerhouse behind the TV's performance. It analyzes and enhances content in real-time, delivering sharper images, smoother motion, and more vibrant colors. This processor also contributes to advanced sound processing for a cinematic experience. *Note: Utilizes AI-based formulas to upscale to 4K resolution. Resulting picture may vary based on source content.*



Auto HDR Remastering

Transform content to HDR-like quality

Figure 5.6: NQ4 AI Gen2 Processor. This image shows the processor chip, representing the core intelligence that powers the TV's picture and sound enhancements.

5.7 Official Product Video

Watch the official product video for a visual overview of the Samsung M80H Series features.

Your browser does not support the video tag.

Video 5.1: Samsung M80H Features. This video provides a detailed overview of the key features and technologies integrated into the Samsung M80H Series Smart TV, including Mini LED, Pure Spectrum Color, Motion Xcelerator 144Hz, AI Soccer Mode, AI Sound Controller, Vision AI Companion, and Samsung TV Plus.

6. MAINTENANCE

6.1 Cleaning the TV

To clean the screen, gently wipe it with a soft, dry microfiber cloth. For stubborn marks, lightly dampen the cloth with water or a screen-safe cleaning solution. Avoid using harsh chemicals, abrasive materials, or direct spraying of liquids onto the screen or frame. For the TV frame and stand, use a soft, dry cloth.

6.2 General Care

Ensure proper ventilation around the TV. Avoid placing the TV in direct sunlight or near heat sources. Disconnect the power cable during lightning storms or when the TV will be unused for extended periods.

7. TROUBLESHOOTING

7.1 No Power

- Check if the power cable is securely connected to the TV and the wall outlet.
- Verify that the wall outlet is functioning by plugging in another device.
- Try a different power outlet.

7.2 No Picture or Poor Picture Quality

- Ensure all video cables (HDMI, etc.) are securely connected to both the TV and the source device.
- Check that the correct input source is selected on the TV.
- Adjust picture settings (brightness, contrast, sharpness) in the TV menu.
- If using an antenna, check antenna connection and perform a channel scan.

7.3 No Sound or Poor Sound Quality

- Check the TV volume and ensure it is not muted.
- If using external audio devices (soundbar, receiver), ensure they are properly connected and powered on.
- Check audio output settings in the TV menu.

7.4 Remote Control Not Working

- Replace the batteries in the remote control.
- Ensure there are no obstructions between the remote and the TV.
- If it's a Bluetooth remote, ensure it is paired with the TV.

7.5 Smart Features/Internet Connectivity Issues

- Check your Wi-Fi connection or Ethernet cable.
- Restart your router and modem.
- Perform a network connection test in the TV's settings menu.
- Ensure your Samsung Account is logged in for network-based smart services.

8. SPECIFICATIONS

Model Name	M80H
Model Number	UN85M80HAFXZA
Brand	Samsung
Screen Size	85 Inches
Display Technology	Mini-LED
Resolution	4K (3840 x 2160)

Refresh Rate	120Hz (Motion Xcelerator 144Hz for PC gaming)
Processor	NQ4 AI Gen2 Processor
Operating System	Tizen
Connectivity	3 HDMI Ports (1 eARC), 1 USB Port, Ethernet, Wi-Fi, Bluetooth 5.3
VESA Mount Standard	400 x 300 mm
Product Dimensions (D x W x H)	12.8"D x 74.4"W x 44.6"H (with stand)
Item Weight	63.7 Pounds (with stand)
Color	Black

9. WARRANTY AND SUPPORT

9.1 Warranty Information

Your Samsung M80H Series TV comes with a **1 Year Manufacturer Warranty**. Please refer to the included Warranty Card for detailed terms and conditions. EU spare part availability duration is 7 years.

9.2 Customer Support

For technical assistance, troubleshooting beyond this manual, or warranty claims, please contact Samsung Customer Support. Contact information can be found on the Warranty Card or the official Samsung website.