

Psadhi J500 Plus

Psadhi J500 Plus Open Ear Clip Wireless Earbuds User Manual

INTRODUCTION

Thank you for choosing the Psadhi J500 Plus Open Ear Clip Wireless Earbuds. These earbuds feature an innovative open-ear design, Bluetooth 5.4 connectivity, and IPX7 waterproofing, providing a comfortable and high-quality audio experience while keeping you aware of your surroundings. This manual provides detailed instructions for setup, operation, and maintenance to ensure optimal performance.



Image: Psadhi J500 Plus Open Ear Clip Wireless Earbuds and their charging case.

WHAT'S IN THE BOX

- 2 x Wireless Earbuds (Left and Right)
- 1 x Wireless Charging Case
- 1 x USB-C Cable
- 1 x User Manual

SETUP

Initial Charge

Before first use, ensure the charging case and earbuds are fully charged. Connect the provided USB-C cable to the charging port on the case and a compatible power source. The LED display on the case will

indicate the charging status.



Dual-Mic AI Call Noise Reduction

Equipped with dual-mic ENC technology for call clarity and effective noise reduction.

Image: The charging case with an LED display indicating the current battery level.

Pairing with Your Device

1. Open the charging case. The earbuds will automatically enter pairing mode.
2. On your smartphone or Bluetooth-enabled device, go to Bluetooth settings.
3. Select "J500 Plus" from the list of available devices.
4. Once connected, you will hear an audio prompt, and the earbuds will be ready for use.

Video Tutorial: How to Setup and Use



Video: A detailed guide on setting up and using the AI Translation Earbuds, including pairing and app usage.

WEARING THE EARBUDS

The J500 Plus earbuds feature an open-ear clip design for comfort and situational awareness. Follow these steps for a secure fit:

1. Take the earbuds out of the charging case.
2. Gently hang the end of the earbud over your ear bone.
3. Turn the earbud and slide it behind your ear.
4. Adjust the ear hook for a secure and comfortable fit. The earbuds should rest gently on your ear, not inside the ear canal.

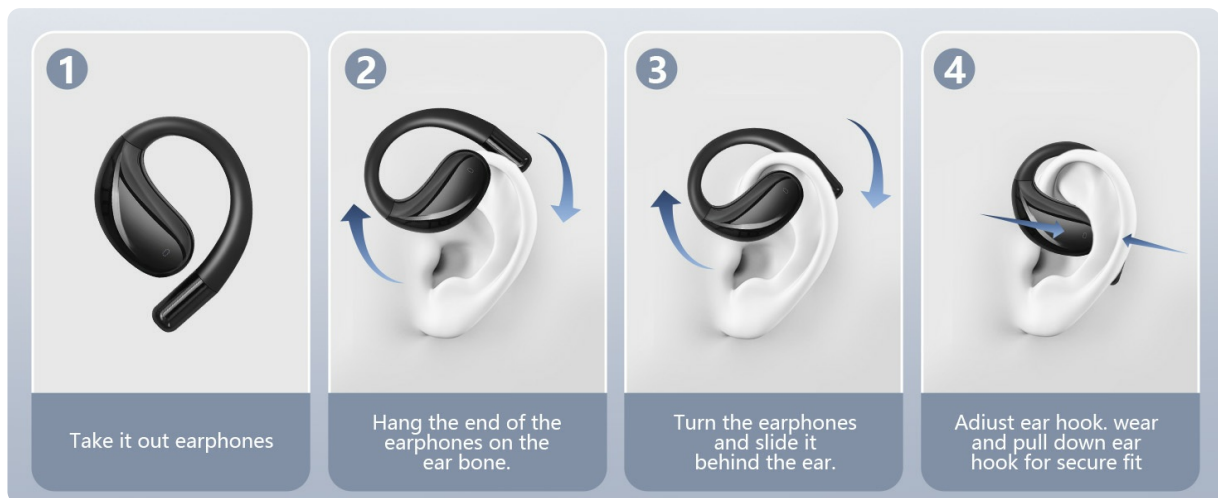


Image: Visual instructions demonstrating the correct method for wearing the open ear clip earbuds.

OPERATING INSTRUCTIONS

Touch Controls

The earbuds are equipped with flexible touch controls. Refer to the detailed instructions in the included Quick Start Guide for specific tap functions (e.g., play/pause, skip track, answer/end call, activate voice assistant).

Call Management

With dual-mic ENC technology, these earbuds ensure crystal-clear communication by accurately capturing your voice and reducing ambient noise.

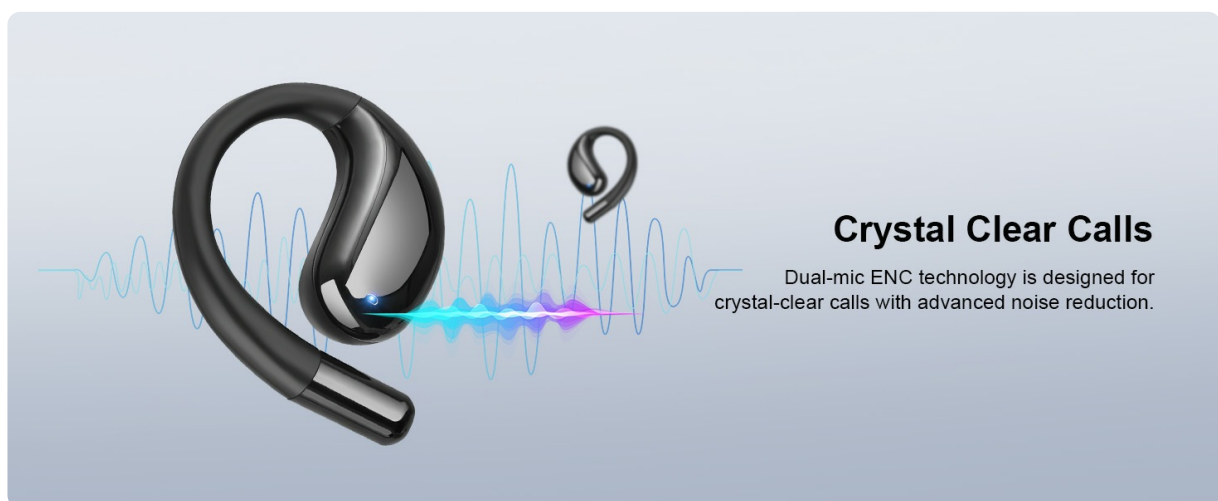


Image: An earbud with a graphic representation of sound waves, highlighting its crystal-clear call capabilities.

KEY FEATURES

- **Open Over-Ear Design:** Allows you to enjoy audio while remaining aware of your surroundings, without being plugged into the ear canal.
- **Bluetooth 5.4 Connectivity:** Experience faster and more stable transmission speeds with ultra-low latency and perfect synchronization.



Image: A close-up view of an earbud, emphasizing its advanced Bluetooth 5.4 connection technology.

- **Extended Playtime:** Up to 12 hours of continuous play time on a single charge, with the charging case providing an additional 48 hours.
- **IPX7 Waterproof:** Sweat- and water-resistant design, suitable for workouts and outdoor activities.



Image: An earbud covered in water droplets, demonstrating its IPX7 water resistance for sports and outdoor use.

- **Powerful Stereo Sound:** Built-in 15.3mm dynamic drivers deliver rich audio with clear instrument and vocal reproduction.

SPECIFICATIONS

| Feature | Detail |
|-------------------------|---------------|
| Brand | Psadhi |
| Model Name | J500 Plus |
| Connectivity Technology | Bluetooth 5.4 |

| | |
|---------------------|--|
| Ear Placement | Open Ear |
| Form Factor | In Ear (Clip-on) |
| Water Resistance | IPX7 |
| Item Weight | 2.89 ounces |
| Included Components | 2 x Wireless Earbuds, 1 x USB-C Cable, 1 x User Manual, 1 x Wireless Charging Case |

TROUBLESHOOTING

No Sound/Poor Sound Quality

- Ensure earbuds are fully charged.
- Check Bluetooth connection and ensure earbuds are paired correctly.
- Adjust the earbuds' position on your ear for optimal sound delivery.
- Clean any debris from the speaker grilles.

Earbuds Not Charging

- Ensure the charging case is charged.
- Verify the earbuds are correctly seated in the charging case.
- Check the USB-C cable and power adapter for damage.

Pairing Issues

- Turn off Bluetooth on your device and turn it back on.
- Forget the "J500 Plus" device in your Bluetooth settings and attempt to re-pair.
- Ensure earbuds are in pairing mode (indicated by LED lights).

MAINTENANCE

To ensure the longevity and performance of your Psadhi J500 Plus earbuds, follow these maintenance guidelines:

- **Cleaning:** Use a soft, dry, lint-free cloth to clean the earbuds and charging case. Do not use abrasive cleaners or solvents.
- **Storage:** Store the earbuds in their charging case when not in use to protect them from dust and damage.
- **Water Exposure:** While IPX7 waterproof, avoid prolonged submersion in water. Ensure earbuds are dry before placing them back in the charging case.

WARRANTY AND SUPPORT

For warranty information and customer support, please refer to the contact details provided on the product packaging or the official Psadhi website. Keep your purchase receipt as proof of purchase for any warranty claims.

