

Garvee KT-YY-9K-3D4Adx

Garvee 9000 BTU Portable Air Conditioner User Manual

Model: KT-YY-9K-3D4Adx

Brand: Garvee

1. INTRODUCTION

This manual provides essential information for the safe and efficient operation of your Garvee 9000 BTU Portable Air Conditioner. Please read it thoroughly before installation and use, and retain it for future reference. This unit is designed to provide cooling, dehumidification, and ventilation for rooms up to 45 m².

2. SAFETY INSTRUCTIONS

To reduce the risk of fire, electric shock, or injury, always follow these basic precautions:

- Read all instructions before using the appliance.
- Only connect the unit to a properly grounded power outlet.
- Do not operate the unit with a damaged cord or plug.
- Do not block air outlets or inlets.
- Keep the unit away from heat sources and direct sunlight.
- Do not use the unit in wet areas like bathrooms or laundries.
- Always unplug the unit before cleaning or servicing.
- Do not allow children to operate the unit unsupervised.

3. PACKAGE CONTENTS

Verify that all items are present in the package:

- Garvee 9000 BTU Portable Air Conditioner Unit
- Remote Control

- Window Sealing Kit (Exhaust hose, hose connectors, adjustable window slider kit)
- User Manual

Kompakte Raumklimaanlage



Image: The portable air conditioner unit, its remote control, and the various parts of the window sealing kit, including the exhaust hose and window slider.

4. PRODUCT FEATURES

Your Garvee Portable Air Conditioner offers multiple functions for enhanced comfort:

- **Powerful Cooling:** 9000 BTU cooling capacity, capable of lowering room temperature to 18°C (64°F).
- **3-in-1 Functionality:** Operates as an air conditioner, dehumidifier, and fan.
- **Quiet Operation:** Designed with an acoustically isolated compressor, operating at less than 51 dB, especially in Night Mode.
- **Dehumidification:** Removes up to 30 pints of moisture per day, ideal for humid conditions.
- **Night Mode:** Ultra-quiet operation with dimmed display for undisturbed sleep.

- **Easy Mobility:** Equipped with 360° casters and integrated handles for effortless movement.
- **Intuitive Controls:** Features a touch control panel and a full-function remote control.
- **Timer Function:** Programmable 24-hour timer for automatic on/off scheduling.

Tragbare und kompakte Klimaanlage

Tragbar und kompakt

Nimmt nur wenig Platz ein



Leicht zu bewegen

Integrierte Griffe und Rollen erleichtern den Transport dorthin, wo Sie ihn benötigen



Image: Visual representation of the three operating modes: cooling with snowflakes, dehumidification with water droplets, and fan mode with airflow arrows.



1

Befestigen Sie den Schlauchanschluss an einem Ende des Abluftschlauchs.



2

Schließen Sie den Fenster-Kit-Adapter an das andere Ende des Abluftschlauchs an.



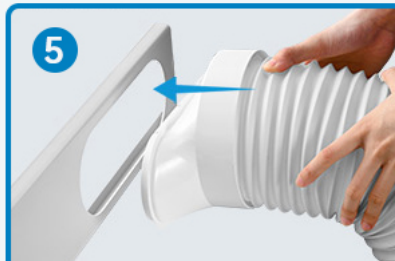
3

Verlängern Sie die Länge des verstellbaren Fenstersatzes, um ihn an Ihr Fenster anzupassen.



4

Verbinden Sie den Schlauchanschluss mit der Abluftöffnung der Klimaanlage.



5

Verlängern Sie den Abluftschlauch und stecken Sie den Abluftschlauch in das Fensterset.



6

Schließen Sie den Strom an, schalten Sie den Schalter ein, stellen Sie den Modus ein und genießen Sie.

Image: The air conditioner in a bedroom setting, highlighting its quiet operation (51dB), sleep mode, 24-hour timer, and automatic shut-off for energy saving.

5. SETUP AND INSTALLATION

Follow these steps to properly install your portable air conditioner:

1. Attach the hose connector to one end of the exhaust hose.
2. Connect the window kit adapter to the other end of the exhaust hose.
3. Extend the adjustable window kit to fit your window opening.
4. Connect the hose connector to the air conditioner's exhaust outlet.
5. Extend the exhaust hose and insert the window kit adapter into the adjusted window kit.
6. Connect the power cord, turn on the unit, select your desired mode, and enjoy.



Image: A step-by-step visual guide demonstrating the assembly of the exhaust hose and window kit, and its connection to the air conditioner and window.

6. OPERATING INSTRUCTIONS

The unit can be controlled via the touch panel on the top of the unit or the included remote control.

Control Panel and Remote Control

Both the control panel and remote control feature buttons for Power, Mode, Fan Speed, Timer, and Temperature Adjustment (Up/Down).

Zwei Möglichkeiten zur Bedienung



Image: A close-up of the air conditioner's top control panel and the remote control, illustrating the various buttons for operation.

Operating Modes

- **Cooling Mode:** Select this mode for active cooling. Adjust the temperature using the Up/Down buttons.
- **Dehumidification Mode:** This mode removes excess moisture from the air. The fan speed is typically fixed in this mode.
- **Fan Mode:** Circulates air without cooling. Select between high and low fan speeds.
- **Night Mode:** Activates quiet operation and dims the display for comfortable sleep.

Timer Function

Press the Timer button to set a desired time for the unit to automatically turn on or off. The timer can be set for up to 24 hours.

7. MAINTENANCE

Regular maintenance ensures optimal performance and longevity of your air conditioner.

Cleaning the Air Filter

The reusable air filter should be cleaned monthly, or more frequently depending on usage and air quality. A dirty filter can reduce cooling efficiency and airflow.

1. Unplug the air conditioner from the power outlet.
2. Locate and remove the air filter from the back or side of the unit (refer to the diagram in the unit's casing if available).
3. Wash the filter with warm, soapy water. Rinse thoroughly.
4. Allow the filter to air dry completely before reinserting it into the unit. Do not use a dryer or direct heat.
5. Reinsert the dry filter and plug the unit back in.

Draining Water

During dehumidification or in very humid conditions, the unit will collect water. The unit has a self-evaporative system, but in high humidity, manual draining may be required. Refer to the unit's specific draining port and instructions for your model.

8. TROUBLESHOOTING

If you encounter issues with your air conditioner, consult the following common problems and solutions:

Problem	Possible Cause	Solution
Unit does not turn on	No power, power cord unplugged, circuit breaker tripped	Check power connection, reset circuit breaker.
Insufficient cooling	Dirty air filter, blocked air intake/exhaust, room too large, windows/doors open	Clean air filter, ensure clear airflow, close windows/doors, check room size suitability.
Unit is noisy	Unit not level, fan speed too high, internal component issue	Ensure unit is on a flat surface, reduce fan speed, contact support if noise persists.
Water leakage	Drain plug not properly sealed, unit tilted, excessive humidity	Check drain plug, ensure unit is level, drain water if necessary.

If the problem persists after attempting these solutions, please contact customer support.

9. SPECIFICATIONS

Specification	Value
Brand	Garvee
Model Number	KT-YY-9K-3D4Adx
Cooling Capacity	9000 BTU
Recommended Room Size	Up to 45 m ²

Specification	Value
Operating Modes	Cooling, Dehumidification, Ventilation, Night Mode
Noise Level	51 Decibels (in Night Mode)
Dehumidification Capacity	30 Pints/Day
Power Source	Corded Electric
Voltage	220V
Wattage	1100 Watts
Dimensions (D x W x H)	33.5 x 87.5 x 33 cm
Item Weight	23110 Grams
Control Method	Touch, Remote Control
Energy Efficiency (SEER)	20
Energy Efficiency Class	A
Annual Energy Consumption	692 kWh per year
UPC	822255307815

10. WARRANTY AND SUPPORT

Your Garvee Portable Air Conditioner comes with a **30-day warranty** from the date of purchase, covering manufacturing defects.

For technical support, troubleshooting assistance, or warranty claims, please contact your retailer or the Garvee customer service department. Please have your model number (KT-YY-9K-3D4Adx) and proof of purchase ready when contacting support.