



Manuals.plus /

› YUNZII /

› YUNZII B98 PRO QMK/VIA Wireless Mechanical Gaming Keyboard User Manual

## YUNZII B98 PRO

# YUNZII B98 PRO QMK/VIA Wireless Mechanical Gaming Keyboard User Manual

MODEL: B98 PRO

## Introduction

---

The YUNZII B98 PRO is a versatile 96% layout mechanical gaming keyboard designed for both efficiency and customization. It features tri-mode connectivity, QMK/VIA programmability, hot-swappable switches, and a unique gasket-mounted structure for a premium typing experience. This manual provides detailed instructions to help you get the most out of your keyboard.

# YUNZII B98 PRO

## QMK/VIA Custom Wireless Mechanical Keyboard



QMK/VIA  
Programmable



Cute 3D  
Cat Knob



BT5.0/2.4G  
/Wired



96% Layout with  
Numeric Keypad



Hot  
Swappable



Gasket  
Structure



Double-Shot  
PBT Keycaps



8000mAh  
Battery

Figure 1: YUNZII B98 PRO QMK/VIA Wireless Mechanical Gaming Keyboard overview.

## What's in the Box

- YUNZII B98 PRO Keyboard
- USB Cable (Type-C)
- Switch and Keycap Puller
- Function Card & Manual
- 2.4G Dongle
- Dust Cover
- Extra Knob (Round Metal)
- Extra Keycaps and Switches

# PACKAGE LIST



1. B98 PRO Keyboard\*1
2. USB Cable for Type-C\*1
3. Switch and Keycap Puller\*1
4. Function Card & Manual\*1
5. 2.4G Dongle\*1
6. Dust Cover\*1
7. Extra Knob\*1
8. Extra Keycaps and Switches

Figure 2: Package contents of the YUNZII B98 PRO keyboard.

## Setup

1. **Wired Connection:** Connect the keyboard to your device using the provided USB-C cable. Ensure the mode switch on the back of the keyboard is set to the wired (USB-C) position.
2. **2.4GHz Wireless Connection:**
  - Locate the 2.4G dongle stored under the adjustable stand on the back of the keyboard.
  - Plug the 2.4G dongle into an available USB port on your computer.
  - Set the mode switch on the back of the keyboard to the 2.4G wireless position. The indicator light will flash Cyan slowly, then stay solid Cyan upon successful connection.



### PACKAGE LIST :

1. B98 PRO Keyboard\*1
2. USB Cable for Type-C\*1
3. Switch and Keycap Puller\*1
4. Function Card & Manual\*1
5. 2.4G Dongle\*1
6. Dust Cover\*1
7. Extra Knob\*1
8. Extra Keycaps and Switches

Figure 3: Connecting the keyboard via 2.4GHz wireless mode.

### 3. Bluetooth Connection:

- Set the mode switch on the back of the keyboard to the Bluetooth (BT) position.
- Short press Fn+1/2/3 to select a Bluetooth channel. The selected key's backlight will flash Blue slowly.
- Long press Fn+1/2/3 to enter Bluetooth pairing mode. The key's backlight will fast flash Blue.
- On your device, search for "YUNZII B98 PRO BT" in Bluetooth settings and connect. The key's backlight will stay solid Blue, then restore to normal backlight upon successful connection.

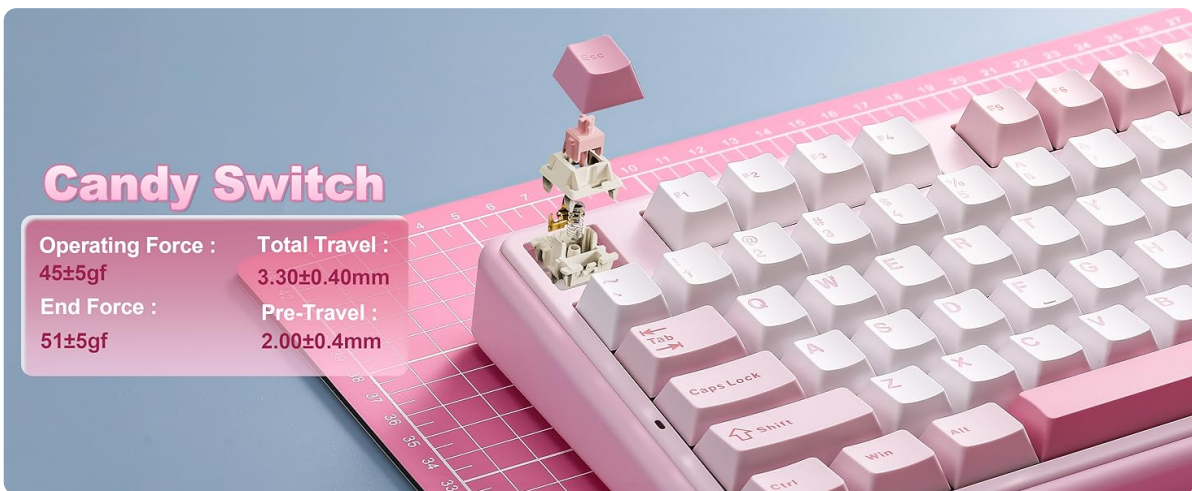


Figure 4: Connecting the keyboard via Bluetooth mode.

4. **System Compatibility:** Use the Win/Mac switch on the back of the keyboard to select the appropriate operating system mode.

## Operating

### QMK/VIA Customization

The B98 PRO keyboard supports QMK/VIA firmware for advanced customization. This allows you to remap keys, create macros, and design intricate RGB lighting effects.

- To customize, connect the keyboard in wired mode.

- Visit the official YUNZII website ([www.yunzii.com](http://www.yunzii.com)) and navigate to the Software section.
- Download the JSON file specific to the B98 PRO.
- Access the VIA configurator online ([usevia.app](http://usevia.app)).
- Enable the 'Show Design tab' in VIA settings.
- Load the downloaded JSON file into the VIA software.
- Connect your keyboard within VIA to begin customizing key mappings, macros, and lighting.

Your browser does not support the video tag.

Video 1: Guide on how to customize your YUNZII B98 PRO keyboard using QMK/VIA software.

## Dual-Style Knob Functionality

The keyboard features a customizable knob. By default, it controls multimedia volume. Pressing the knob mutes/unmutes audio. You can swap between the pre-installed 3D cat knob and the included round metal knob based on your preference. The knob's functions can be remapped via QMK/VIA.

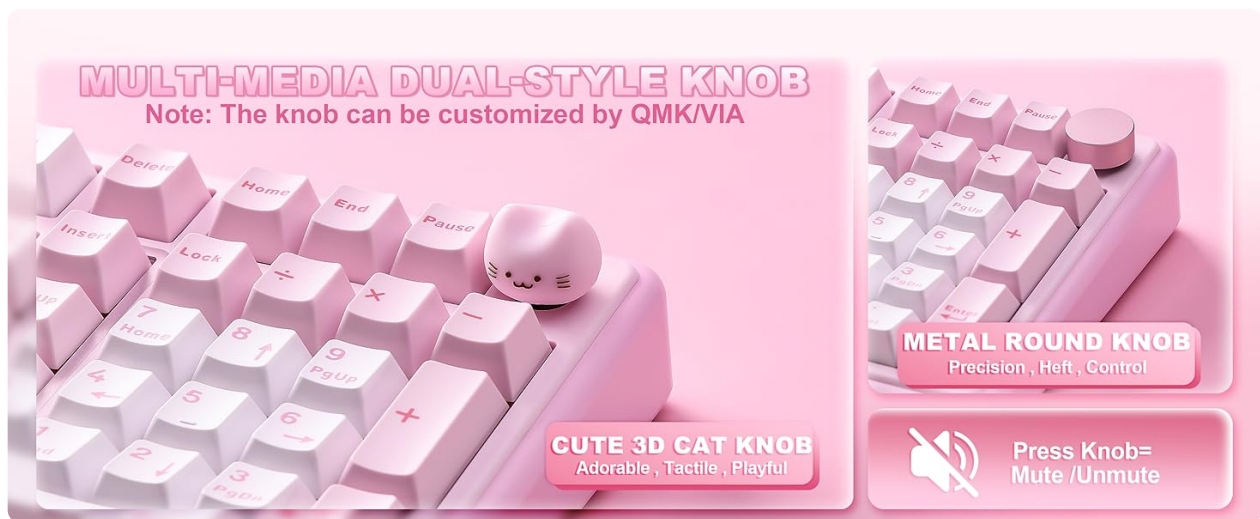


Figure 5: Dual-style knob design and functionality.

## RGB Backlight Control

The keyboard features vibrant RGB backlighting. Use the following Fn key combinations to adjust the lighting:

- **Fn + Backspace:** Backlight ON/OFF
- **Fn + |\**: Change Backlight Effect****
- **Fn + Enter:** Change Backlight Color
- **Fn + Tab:** White Light ON/OFF
- **Fn + Up/Down Arrow:** Adjust Brightness
- **Fn + Left/Right Arrow:** Adjust Blinking Speed

The LOG LED (on the metallic cat logo) also has adjustable effects:

- **Fn + Right Shift:** Change LOG LED Effect
- **Fn + /?:** Change LOG LED Color
- **Fn + Right Alt:** Adjust LOG LED Brightness
- **Fn + Space:** Adjust LOG LED Speed



Figure 6: RGB Backlight and LOG LED control commands.

## Battery Level Check

In wireless mode, press **Fn + B** to check the current battery level. The metallic cat logo LED indicator will also display the battery level at a glance.



Figure 7: Battery life and checking battery level.

## Maintenance

### Hot-Swappable Switches

The B98 PRO features a hot-swappable base compatible with both 3-pin and 5-pin mechanical switches. This allows for easy replacement or customization of switches without soldering.

- Use the provided switch puller to carefully remove keycaps and switches.
- Align new switches with the PCB sockets and press firmly until they click into place.
- Replace keycaps.



Figure 8: Hot-swappable switch mechanism.

## Cleaning

To clean your keyboard, disconnect it from power. Use a soft brush or compressed air to remove dust and debris from between the keycaps. For stubborn dirt, gently wipe keycaps with a damp cloth and mild soap, ensuring no liquid enters the keyboard's internal components.

## Troubleshooting

- **Connectivity Issues:** Ensure the mode switch (wired, 2.4G, BT) is correctly set for your desired connection. For Bluetooth, ensure the keyboard is in pairing mode and your device's Bluetooth is enabled. For 2.4G, ensure the dongle is securely plugged in.
- **Keys Not Responding:** Check if the keyboard is properly connected. If using wireless modes, ensure the battery is charged. If individual keys are not working, consider replacing the hot-swappable switch for that key.
- **RGB Lighting Problems:** Verify that the backlight is turned on (Fn + Backspace). Adjust brightness (Fn + Up/Down Arrow) and try different effects (Fn + |).
- **QMK/VIA Software Not Detecting Keyboard:** Ensure the keyboard is connected via USB-C and the mode switch is set to wired. Confirm you have loaded the correct JSON file in VIA.

If you encounter persistent issues, please refer to the support section for contact information.

## Specifications

Feature	Detail
Brand	YUNZII
Model Name	B98 PRO
Layout	96% (100 Keys with Numpad)
Connectivity	Bluetooth 5.0, 2.4GHz Wireless, USB-C Wired
Switches	Hot-Swappable (3-pin/5-pin), Pre-Lubed Linear Switches
Keycaps	Double-Shot PBT, Cherry Profile
Backlighting	RGB (South-Facing LED)
Battery Capacity	8000mAh
Compatible Devices	Laptop, PC, Smartphone, Tablet (Windows, Mac, Android)
Material	Plastic
Item Weight	1.1 Kilograms

## Warranty & Support

The YUNZII B98 PRO keyboard comes with a **1-Year Manufacturer Warranty**.

For technical support, troubleshooting assistance, or warranty claims, please contact Yunzii Keyboard directly through Amazon:

1. Visit the YUNZII product page on Amazon.
2. Click on the seller's name, "Yunzii Keyboard".
3. Select "Ask a question" to send a message to the seller.

If you have already placed an order, you can go to your orders, select "Problem with order", and then send a message.



Figure 9: Customer support contact process.

