

[Manuals.plus](#) /

› [DOMANKI](#) /

› DOMANKI 14000 BTU Portable Air Conditioner (Model DMPAC-10-C1) User Manual

DOMANKI DMPAC-10-C1

DOMANKI 14000 BTU Portable Air Conditioner (Model DMPAC-10-C1) User Manual

Your guide to safe and efficient operation.

INTRODUCTION

This manual provides essential information for the proper use and maintenance of your DOMANKI 14000 BTU Portable Air Conditioner, Model DMPAC-10-C1. This 3-in-1 unit offers cooling, dehumidifying, and fan functions to enhance your indoor comfort. Please read all instructions carefully before installation and operation to ensure safety and optimal performance.



Image: DOMANKI 14000 BTU Portable Air Conditioner in a living room setting.

SETUP AND INSTALLATION

The DOMANKI portable air conditioner is designed for easy setup. Follow these steps for proper installation:

Unpacking and Placement

- Carefully remove the unit and all accessories from the packaging.
- Place the unit on a flat, stable surface. Ensure there is at least 20 inches of clearance from walls or furniture to allow for proper airflow.
- The unit features 360° smooth-gliding wheels and built-in handles for easy mobility between rooms.

Window Kit Installation

The included universal window kit is suitable for both horizontal and vertical sliding windows, with an adjustable range of 20.5 to 57.3 inches. The installation process is tool-free.

1. **Prepare the Window:** Install the foam sealing strip around the window frame to ensure a tight seal.
2. **Assemble Window Panel:** Insert the inner panel into the outer panel of the window kit. Adjust the length

to fit your window opening and tighten the screws.

3. **Install Exhaust Hose:** Attach one end of the exhaust hose to the air conditioner unit's adapter. Connect the other end to the window baffle and secure it with the clips.
4. **Secure Window Kit:** Place the assembled window kit into the window opening. Close the window against the kit to hold it in place.

Window Installation

Suitable for windows from 20.5-57.3 inch



NOT APPLICABLE TO WINDOWS



The following window types are not suitable



Single 20.5"



Dual 31.5"-38.8"



Triple 40.9"-57.3"

Image: Window installation guide for vertical and horizontal sliding windows.

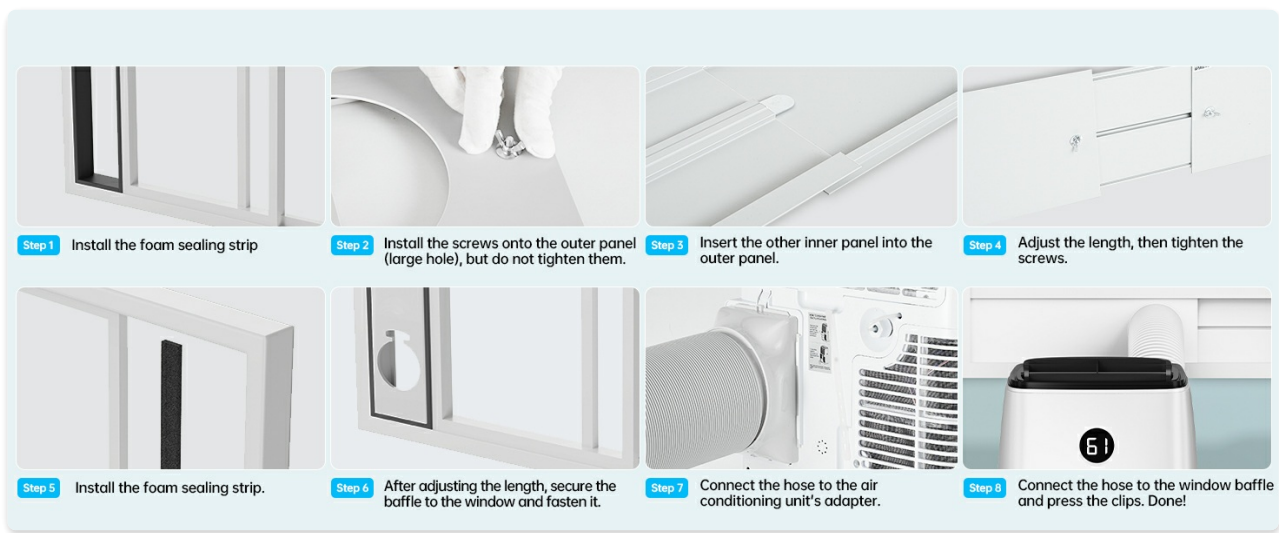


Image: Visual steps for window kit and exhaust hose installation.

Included Components

Your DOMANKI portable air conditioner package includes:

- Portable Air Conditioner Unit
- Air Exhaust Hose
- Hose Adapters
- Window Kit (Window Boards)
- User Manual
- Full Function Remote Control (requires 2 x AAA batteries, not included)
- Drainage Hose
- Sealing Foam
- Butterfly Bolt



Image: All components included in the installation kit.

OPERATING INSTRUCTIONS

Your DOMANKI portable air conditioner offers multiple modes and convenient controls.

Control Methods

The unit can be controlled using the intuitive top-mounted control panel or the included full-function remote control.

Button Control

Dual control via remote or top panel buttons

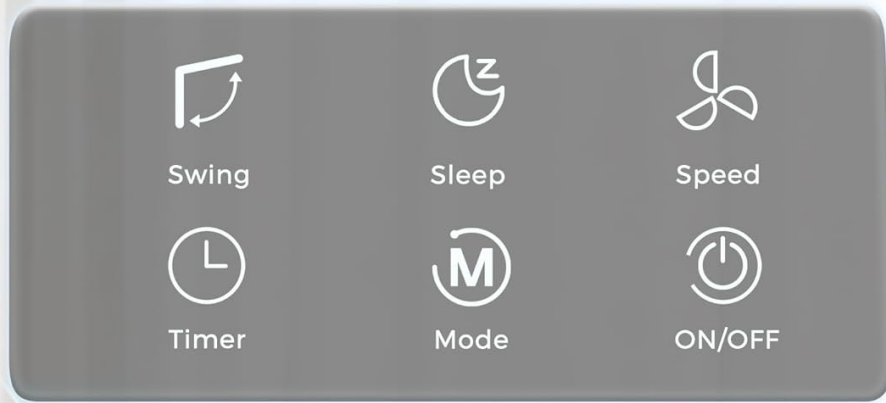


Image: Top-mounted control panel with buttons for various functions.

Remote Control

28 Ft Control distance,
have your air cooler under control anywhere.



Please Facing It Without Obstacles



Cool



Dry



Fan



Sleep



Timer



3 Speed

Image: Remote control in use, showing its 28ft range.

Operating Modes

The unit features three primary operating modes:


- **Cool Mode:** Provides powerful cooling for rooms up to 700 sq. ft. Operates effectively between 61°F and 90°F.
- **Dehumidifier Mode:** Removes up to 96 pints of moisture per day, ideal for humid conditions.
- **Fan Mode:** Circulates air with three adjustable fan speeds (Low, Medium, High).

3 in 1 Modes to Meet all Your Needs




Cool Mode
61-90°F




Fan Mode
Low/Med/High





Dry Mode
96 Pints/ Day

Image: Illustration of the 3-in-1 modes: Cool, Fan, and Dry (Dehumidifier).

Special Features

- **Smart Sleep Mode:** Reduces fan speed and noise level to 48dB for undisturbed sleep. The LED display dims automatically.
- **24-Hour Timer:** Program the unit to turn on or off automatically, allowing for pre-cooling or energy saving.
- **Auto Swing:** Louvers automatically swing to circulate air evenly throughout the room.
- **Child Lock:** Prevents accidental changes to settings.

Undisturbed Sleep At Night

less than 48dB, Low noise with sleep mode



Sleep Mode

(Can only be set by remote control)



Timer

24H Preset to stop



Image: Sleep Mode operation, showing low noise level for quiet rest.

Video Overview

Your browser does not support the video tag.

Video: An overview of the Domanki portable air conditioner features and functions.

MAINTENANCE

Regular maintenance ensures the longevity and efficiency of your air conditioner.

Filter Cleaning

The unit features a washable air filter. Clean the filter regularly to maintain optimal air quality and cooling performance.

- Turn off and unplug the unit before cleaning.
- Remove the air filter from the back of the unit.
- Wash the filter with warm, soapy water. Rinse thoroughly and allow it to air dry completely before reinserting.

Washable Filter, Easy to Clean

For Fresh Air Every Day



Image: Removing the washable filter for cleaning.

Drainage

The DOMANKI portable air conditioner utilizes an advanced self-evaporation system, which typically exhausts most condensation through the hose, allowing for no-drain operation during daily use.

- **Manual Drainage:** In high-humidity environments (above 80%), such as basements or laundry rooms, manual draining may be required approximately every 8 hours. The unit will automatically shut off when the internal tank is full to prevent overflows.
- **Continuous Drainage:** For continuous dehumidification or prolonged cooling in high humidity, connect the included drain hose to the unit's drainage port and direct it to a suitable drain or container.

Self Evaporating System

True Non-stop Cooling

Condenser

Exhausts mist along with hot air.

Water motor

Vaporize excess water into mist.

Evaporation

Connect the drain hose when using the cooling mode for over 8 hours or the dehumidifying mode.

Image: Diagram of the self-evaporating system, showing how condensation is processed.

TROUBLESHOOTING GUIDE

Refer to this section for common issues and their solutions.

Problem	Possible Cause	Solution
Unit does not turn on.	No power, full water tank, timer active.	Check power connection. Empty water tank if full indicator is on. Deactivate timer.
Unit does not cool effectively.	Dirty air filter, blocked air intake/outlet, room size too large, open doors/windows, exhaust hose not properly installed.	Clean air filter. Ensure clear airflow. Close doors/windows. Verify exhaust hose installation.
Water leakage.	Drainage plug loose, continuous drainage hose not properly connected.	Ensure drainage plug is secure. Check continuous drainage hose connection.

Problem	Possible Cause	Solution
Unit is noisy.	Unit not on a flat surface, fan speed too high.	Place unit on a level surface. Reduce fan speed if noise is excessive.
Remote control not working.	Dead batteries, obstruction between remote and unit.	Replace AAA batteries. Ensure no obstacles block the signal.

PRODUCT SPECIFICATIONS

Detailed technical specifications for the DOMANKI 14000 BTU Portable Air Conditioner.

Feature	Specification
Brand	DOMANKI
Model Name	DMPAC-10-C1
Cooling Power (ASHRAE)	14000 British Thermal Units
Cooling Power (SACC)	10000 British Thermal Units
Applicable Room Area	Up to 700 Square Feet
Dehumidification Capacity	96 Pints/Day
Air Flow	277 CFM (470 m ³ /h)
Operating Temperature Range	61°F to 90°F
Noise Level	48 Decibels (in Sleep Mode)
Voltage	115 Volts
Wattage	1250 watts
Refrigerant	R32
Product Dimensions (D x W x H)	13"D x 16"W x 26"H
Item Weight	65 Pounds
Window Kit Compatibility	Horizontal and Vertical Sliding Windows (20.5" to 57.3")
Control Method	Push Button, Remote Control
Special Features	Auto Clean, Child Lock, Dehumidifier, Fast Cooling, Sleep Mode, Auto Swing

WARRANTY INFORMATION

The DOMANKI 14000 BTU Portable Air Conditioner comes with a Limited Warranty. Please refer to the warranty card included in your product packaging for specific terms, conditions, and duration of coverage. Keep your purchase receipt as proof of purchase for any warranty claims.

CUSTOMER SUPPORT

If you encounter any issues or have questions regarding your DOMANKI portable air conditioner that are not covered in this manual, please contact DOMANKI customer service. For the most up-to-date contact information, please refer to the official DOMANKI website or the contact details provided in your product packaging.