

[Manuals.plus](#) /

› [EZAlot](#) /

› EZAlot WiFi Water Timer for Garden Hose Instruction Manual (Model WT501-WF-NH-FM)

EZAlot WT501-WF-NH-FM

EZAlot WiFi Water Timer for Garden Hose

Model: WT501-WF-NH-FM

Brand: EZAlot

1. INTRODUCTION

Thank you for choosing the EZAlot WiFi Water Timer. This smart device allows you to automate your garden watering with precision and convenience, directly from your smartphone. Featuring a heavy-duty brass inlet, flow meter, and intelligent app control, it ensures efficient water management for your lawn and plants. Please read this manual carefully before installation and operation to ensure optimal performance and longevity of your device.

2. PRODUCT OVERVIEW

2.1 Package Contents

- EZAlot WiFi Water Timer x 1
- PTFE Tape x 1
- 1/2" Adapter x 1
- Quick Connector x 1
- Quick Start Guide x 1
- Adapter Instructions x 1
- User Manual x 1

2.2 Key Features

- **No Hub Required:** Connects directly to your 2.4GHz WiFi network.
- **Extended Range:** Enhanced signal module for long-range connectivity in open areas.
- **Dual Watering Modes:** Customize irrigation by time (Duration Mode) or water volume (Flow Mode).
- **Flow Tracking:** Integrated flow meter for monitoring water usage.
- **Smart Weather Alerts & Rain Delay:** App syncs with local weather, offering notifications and up to 30-day rain delay.
- **Durable Construction:** Heavy-duty brass inlet withstands up to 150 PSI and resists corrosion.

- **Real-Time App Alerts:** Notifications for low battery, leaks, or blockages.
- **Child Lock:** Prevents accidental operation.
- **IP65 Weatherproof:** Designed for outdoor reliability.
- **10 Custom Schedules:** Program flexible watering schedules (1 min–24 hrs, daily, weekly, or interval).
- **Manual Mode:** Instant watering without affecting preset schedules.
- **Battery Powered:** Uses 4xAA batteries (not included) for wireless operation.

3. SETUP

3.1 Battery Installation

1. Locate the battery compartment on the back of the water timer.
2. Open the compartment cover.
3. Insert 4 new AA alkaline batteries, ensuring correct polarity (+/-).
4. Close the battery compartment cover securely to maintain the IP65 weatherproof rating.

3.2 App Download and Installation

The EZAlOT WiFi Water Timer operates with the EZAlOT App, which is compatible with the Smart Life platform. You can download the app from your device's app store (iOS or Android) or by scanning the QR code provided in the Quick Start Guide.

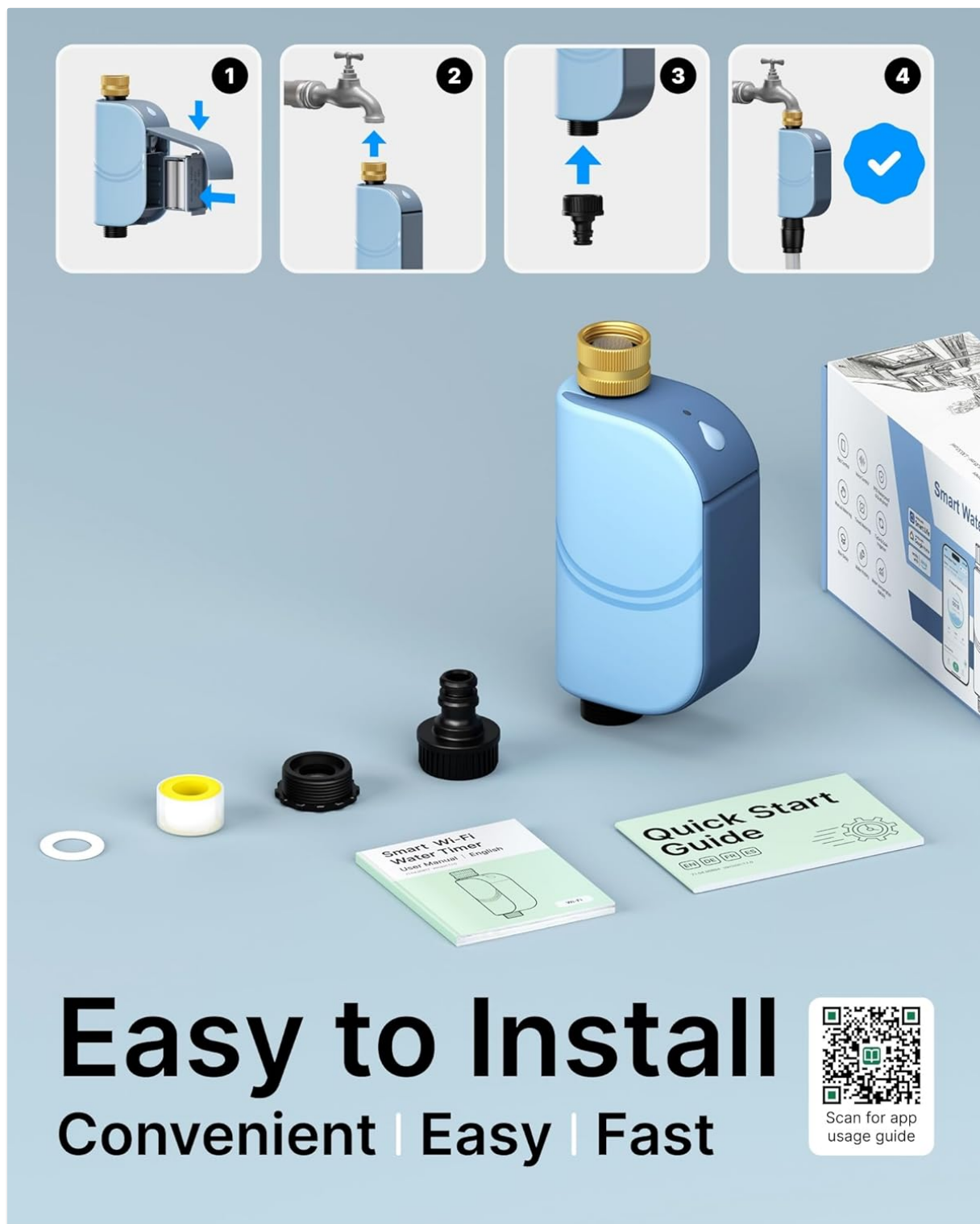


Image: Product components and quick start guide, showing the QR code for app download.

For detailed app setup and pairing instructions, refer to the online guide: [Smart Life App Guide](#)

3.3 Device Pairing (WiFi Connection)

1. Ensure your smartphone is connected to a 2.4GHz WiFi network. The device does not support 5GHz networks.
2. Open the EZALoT App (or Smart Life App) and register/log in.
3. Tap 'Add Device' or the '+' icon in the top right corner.
4. Select 'Water Timer' or search for the device type.
5. Follow the in-app instructions to put the device into pairing mode (usually by pressing and holding the button on the timer for several seconds until an indicator light flashes).
6. Confirm the indicator light status in the app and enter your WiFi network password.

7. The app will connect to the device. Once connected, you can rename the device and assign it to a room.

Important Note: Avoid installing the water timer in metal enclosures, as this can significantly reduce WiFi signal strength and connectivity range.

3.4 Physical Installation

1. Ensure your outdoor faucet is turned off.
2. Apply PTFE tape (plumber's tape) to the threads of your outdoor faucet for a watertight seal.
3. Screw the EZAIoT WiFi Water Timer onto the faucet's threaded outlet. Ensure it is hand-tightened securely.
4. Connect your garden hose to the outlet of the water timer. If necessary, use the provided quick connector or 1/2" adapter.
5. Slowly turn on your outdoor faucet. Check for any leaks.

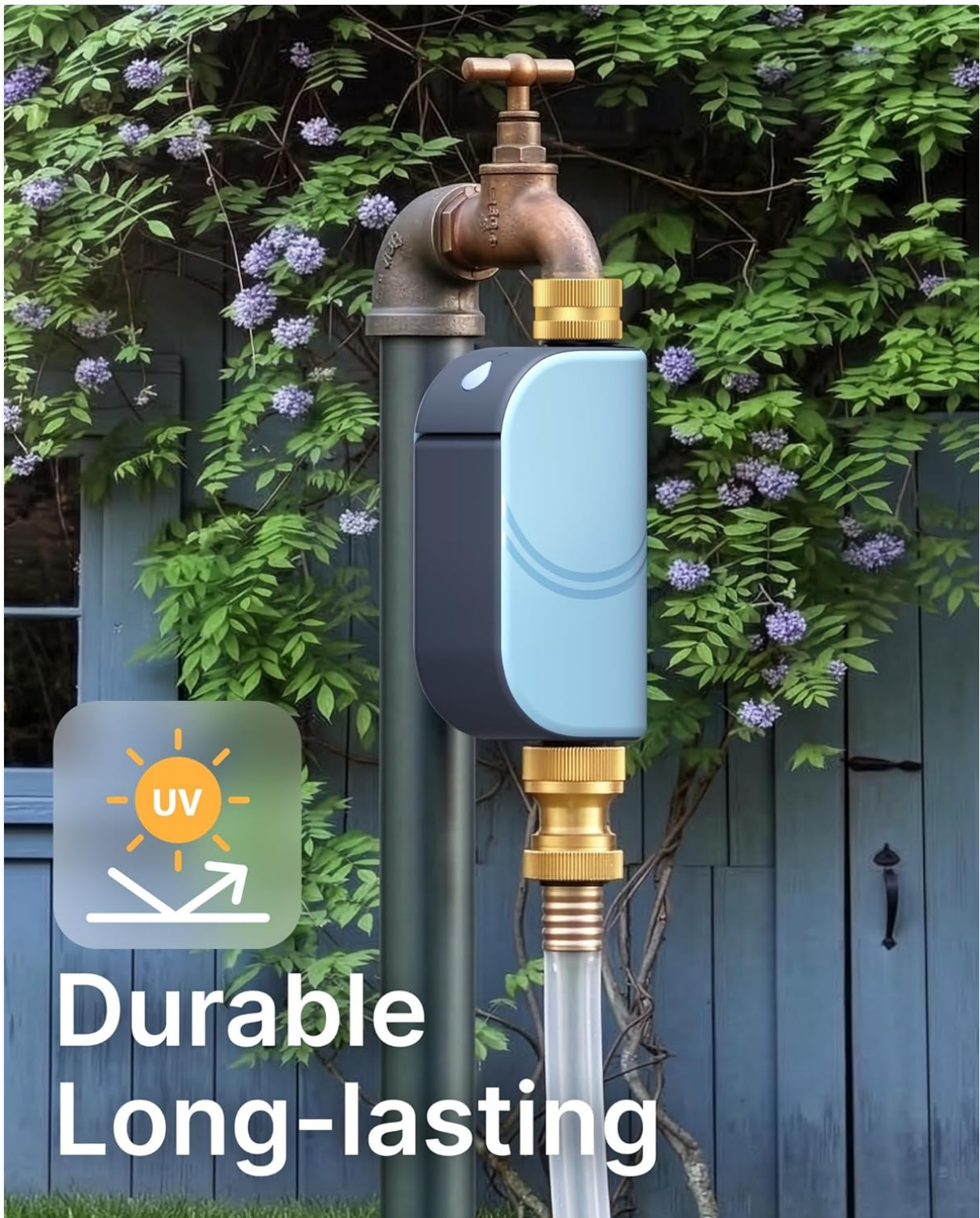


Image: The EZAlot WiFi Water Timer installed on an outdoor faucet, highlighting its durable and long-lasting design.

4. OPERATING INSTRUCTIONS

4.1 App Control Interface

Once paired, you can control and monitor your water timer from anywhere using the EZAlot App. The app provides a user-friendly interface to manage all watering functions.



Image: A user interacting with the EZAlot app to customize watering schedules, showing options for irrigation duration, cycle & soak mode, time mode, and up to 10 schedules.

4.2 Watering Modes

The timer supports two primary watering modes:

- **Duration Mode:** Waters for a specified period (e.g., 10 minutes). This mode is highly precise and recommended for low-flow systems like drip irrigation with fewer than 10 emitters.
- **Flow Mode (Volume):** Waters until a specified volume of water has passed through the timer (e.g., 50 liters). This mode is ideal for lawn sprinklers that require a flow rate greater than 0.2 GPM.

4.3 Scheduling

You can program up to 10 customized watering schedules through the app:

1. In the app, navigate to the 'Schedule' section for your water timer.
2. Tap 'Add Schedule' to create a new watering program.
3. Set the start time and select your preferred watering mode (Duration or Flow).
4. Define the duration (1 minute to 24 hours) or volume.
5. Choose the frequency: daily, specific days of the week, or an interval (e.g., every 2 days).
6. Save the schedule. You can enable or disable schedules as needed.



Image: App interface displaying various watering schedules for different zones like lawn and balcony, with options for timer mode, volume, and cycle & soak.

4.4 Smart Weather Alerts & Rain Delay

The app integrates with local weather forecasts to help you conserve water:

- The app will send real-time notifications for expected rain or snow.
- You can activate the 'Rain Delay' feature with a single tap in the app. This will pause scheduled watering for a specified period, up to 30 days.
- This feature prevents overwatering and saves water during natural rainfall.

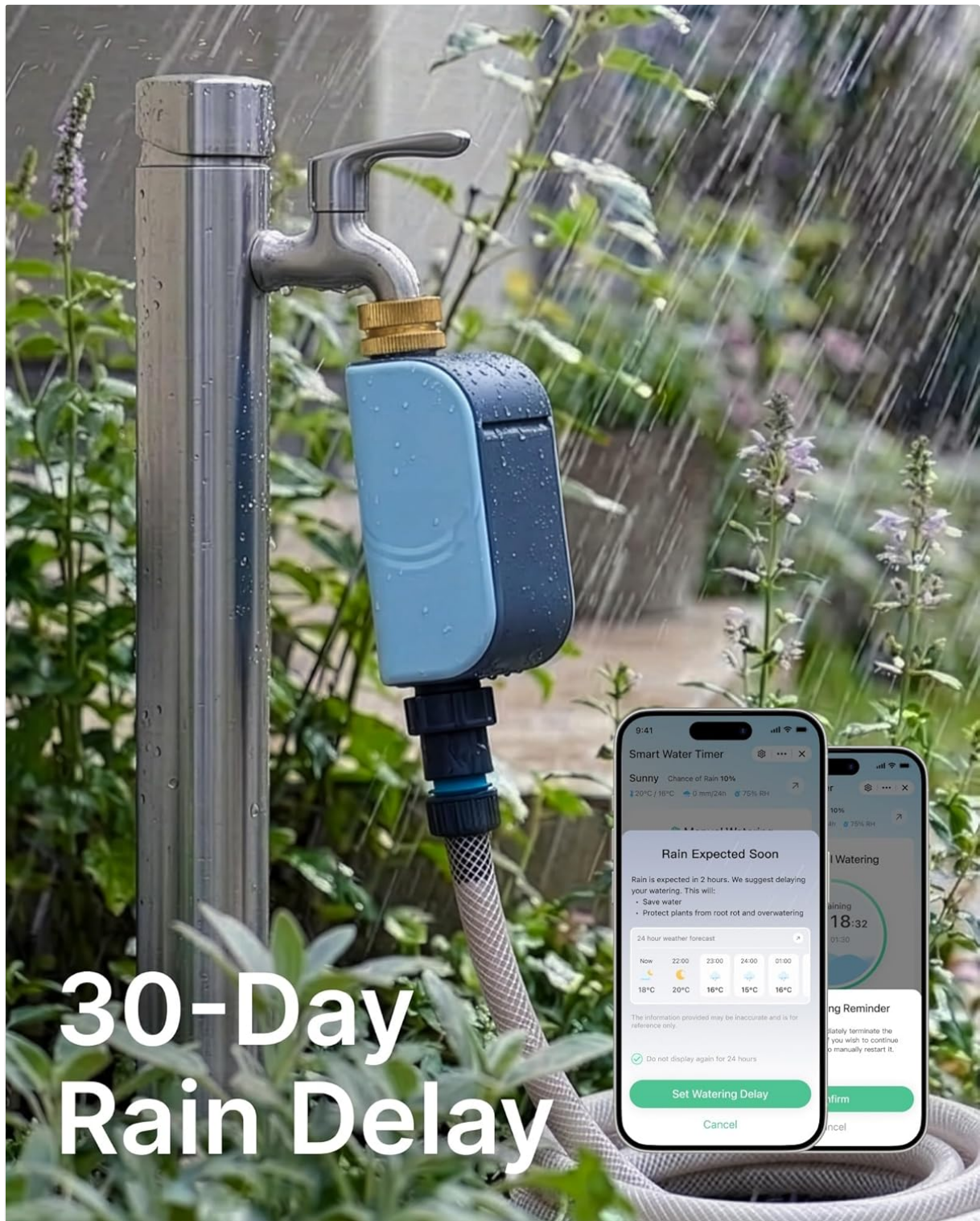


Image: The EZaIoT WiFi Water Timer installed outdoors during rain, with a smartphone screen displaying a 'Rain Expected Soon' alert and a 'Set Watering Delay' option.

4.5 Manual Mode

For immediate watering needs, you can use the Manual Mode:

- **Via App:** In the app, select the manual watering option, set the desired duration or volume, and start watering. This will not interfere with your programmed schedules.
- **On Device:** Press the waterdrop-shaped button on the device to manually turn the water on or off.

4.6 Child Lock

To prevent accidental operation, especially by children, activate the Child Lock feature in the app. This will lock the device's physical operation interface. The Child Lock can only be enabled or disabled through the app.

5. MAINTENANCE

5.1 Battery Replacement

The app will send a low battery alert when the batteries need replacement. Replace all 4 AA batteries simultaneously with new alkaline batteries to ensure consistent power and prevent operational issues.

5.2 Cleaning

Periodically inspect the inlet filter for debris and clean it if necessary to maintain optimal water flow. Wipe the exterior of the device with a damp cloth to remove dirt.

5.3 Winterization

Before freezing temperatures, disconnect the water timer from the faucet and hose. Remove the batteries and store the device indoors in a dry, frost-free location to prevent damage.

6. TROUBLESHOOTING

Problem	Possible Cause	Solution
Device not connecting to WiFi	Incorrect WiFi band (5GHz), weak signal, incorrect password, device not in pairing mode.	Ensure 2.4GHz WiFi, move device closer to router, re-enter password, reset device to pairing mode. Avoid metal enclosures.
No water flow	Faucet off, low battery, clogged filter, hose kinked, schedule not active.	Turn on faucet, replace batteries, clean filter, straighten hose, check app schedule.
Water leakage	Loose connection, worn washer, insufficient PTFE tape.	Tighten connections, replace washers, reapply PTFE tape.
App alerts (low battery, leak, blockage)	Actual event detected by the timer.	Address the issue promptly: replace batteries, check for leaks, clear blockages.
Child Lock prevents manual operation	Child Lock feature is active.	Disable Child Lock through the EZAIoT App.

7. SPECIFICATIONS

Feature	Specification
Model Number	WT501-WF-NH-FM
Dimensions (D x W x H)	3.21" x 1.77" x 6.78"
Connectivity	2.4GHz WiFi (IEEE 802.11b/g/n)
Water Pressure Range	Up to 150 PSI
Power Source	4 x AA Alkaline Batteries (not included)

Feature	Specification
Weather Resistance	IP65 Weatherproof
Inlet Material	Brass
Operating Temperature	Refer to product packaging for specific range

8. WARRANTY AND SUPPORT

EZAIoT products are designed for reliability and performance. For warranty information, please refer to the documentation included with your purchase or visit the official EZAIoT website. For technical support, troubleshooting assistance, or any questions regarding your EZAIoT WiFi Water Timer, please contact our customer support team through the EZAIoT App or the contact information provided on our website.

You can also find additional resources and guides at: [Smart Life App Guide](#)