

[Manuals.plus](#) /

> [Garvee](#) /

> Garvee 8x5 ft Grill Gazebo with Side Awning Instruction Manual

## Garvee HJS-GV-GrillTent-1Side-Khaki-d9N

# Garvee 8x5 ft Grill Gazebo with Side Awning Instruction Manual

## INTRODUCTION

---

This manual provides comprehensive instructions for the assembly, operation, and maintenance of your Garvee 8x5 ft Grill Gazebo with Side Awning. Please read all instructions carefully before assembly and use to ensure safety and optimal performance of your outdoor grill shelter.

## SAFETY INFORMATION

---

Always keep the gazebo a safe distance from heat sources and open flames. Ensure the gazebo is securely anchored to the ground using the provided metal stakes during assembly. Follow the assembly instructions carefully to avoid injury. Keep the gazebo clean and free of debris to prevent fire hazards.

## PACKAGE CONTENTS

---

Before beginning assembly, verify that all components listed below are present:

- Powder-Coated Steel Frame Components
- Double-Tier Polyester Canopy Fabric
- Adjustable Side Awning Fabric (One Side)
- 2 Ventilated Metal Side Shelves
- 4 LED Magnetic Lights
- 10 Utility Hooks
- 1 Bottle Opener
- 8 Metal Ground Stakes
- Assembly Hardware (bolts, nuts, washers, tools)

## SETUP AND ASSEMBLY

---

Assembly requires two individuals. Carefully identify all parts before beginning. Refer to diagrams for correct

placement, as written labels may vary. Securely fasten all connections. Once assembled, anchor the gazebo to the ground using the provided metal stakes for stability.

# GRILL TENT SIZE DETAILS



Figure 1: Grill Gazebo Dimensions for Setup Planning

# AMPLE LIGHT SPACE



## Ceiling Hook

For hanging a light or fan (not included)



## 4 LED Magnetic Lights

Which can be attached to the desired location for illumination

Figure 2: Fully Assembled Grill Gazebo

1. **Unpack and Sort:** Lay out all components and hardware. Compare with the package contents list and diagrams to ensure everything is present and undamaged.
2. **Assemble the Main Frame:** Connect the main support poles and crossbeams according to the diagrams. Do not fully tighten bolts until the entire frame is loosely assembled.
3. **Attach Side Shelves:** Secure the two ventilated metal side shelves to the frame using the provided hardware. Ensure they are level and stable.
4. **Install Canopy:** Drape the double-tier canopy fabric over the frame. Secure it to the frame using the integrated fasteners. Ensure the canopy is taut to prevent water pooling.
5. **Install Side Awning:** Attach the adjustable side awning to the designated side of the gazebo frame.
6. **Final Tightening:** Once all components are in place, systematically tighten all bolts and fasteners.
7. **Anchor the Gazebo:** Use the 8 metal ground stakes to firmly secure each leg of the gazebo to the ground. This is crucial for stability, especially in windy conditions.

## OPERATING INSTRUCTIONS

The Garvee Grill Gazebo is designed for convenience and functionality.

# MULTI-ANGLE ADJUSTMENT

3-Adjustable height settings allow you to freely control the desired height

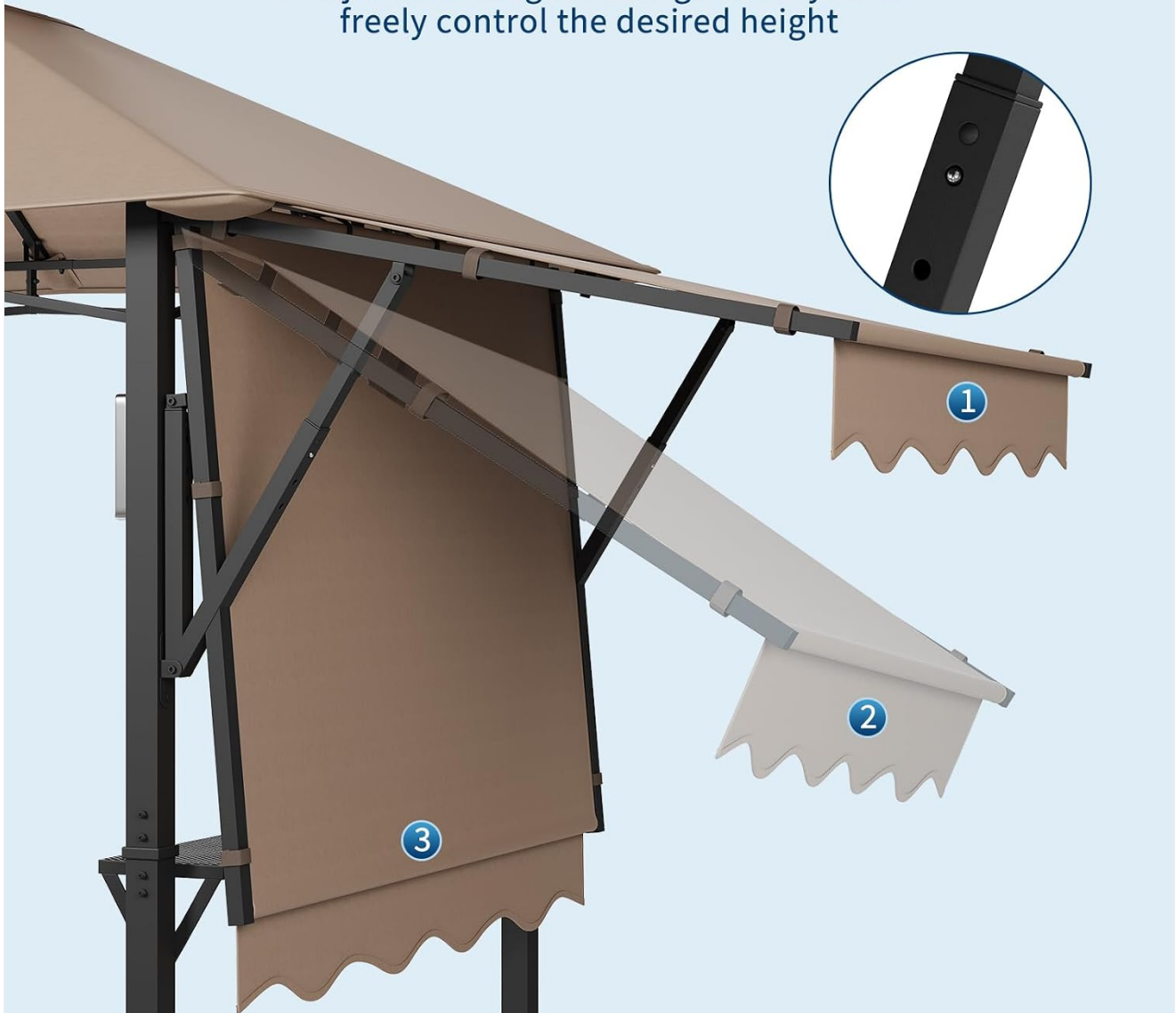


Figure 3: Side Awning Adjustment Mechanism

- **Adjustable Side Awnings:** The dual side awnings can be adjusted to three different angles to provide optimal shade and protection from light rain. Simply push or pull the awning support arms to select the desired angle.
- **Double-Tier Canopy:** The double-tier canopy design facilitates air circulation and allows smoke to escape efficiently during grilling, enhancing comfort and safety.
- **LED Lights:** The four magnetic LED lights can be attached to desired locations on the frame for illumination during evening use. Ensure batteries are installed correctly (batteries not included).
- **Side Shelves and Hooks:** Utilize the two ventilated metal side shelves for placing food, drinks, and grilling tools. The integrated hooks are suitable for hanging utensils and accessories, keeping them within easy reach. The built-in bottle opener provides added convenience.

# DOUBLE-TIERED CANOPY

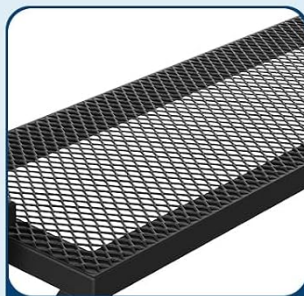


Figure 4: Double-Tier Canopy Ventilation

# LITTLE DETAILS YOU LOVE



Bottle Opener



Placement Space



Hook Tool



Led Lights

Figure 5: Integrated Features: Bottle Opener, Shelves, Hooks, and LED Lights

## MAINTENANCE

Proper maintenance will extend the life of your grill gazebo.

- **Cleaning:** Regularly clean the canopy fabric with mild soap and water. Rinse thoroughly and allow to air dry completely before folding or storing. Wipe the metal frame with a damp cloth to remove dirt and prevent rust.
- **Inspection:** Periodically inspect all frame connections, bolts, and stakes. Tighten any loose fasteners to maintain structural integrity.
- **Weather Precautions:** In anticipation of strong winds, heavy rain, or snow, it is recommended to remove the canopy to prevent damage to both the fabric and the frame. For long-term storage during off-season, disassemble the gazebo and store components in a dry, protected area.

## TROUBLESHOOTING

| Problem | Possible Cause | Solution |
|---------|----------------|----------|
|---------|----------------|----------|

| Problem                    | Possible Cause   | Solution  |
|----------------------------|--|---|
| Difficulty during assembly | Misaligned parts, unclear instructions, insufficient personnel | Refer closely to assembly diagrams. Ensure all components are correctly oriented before tightening fasteners. It is recommended to have two people for assembly.                          |
| Gazebo instability         | Loose connections, inadequate anchoring, uneven surface        | Ensure all frame connections are securely tightened. Verify that the 8 metal stakes are fully inserted into the ground to anchor the gazebo. Avoid placing the gazebo on uneven surfaces. |
| Water pooling on canopy    | Canopy not properly stretched or secured                       | Ensure the canopy is properly stretched and secured to the frame to allow water runoff. Check for any sagging areas and adjust tension if possible.                                       |

## SPECIFICATIONS

| Feature                        | Detail   |
|--------------------------------|--|
| Brand                          | Garvee   |
| Model Number                   | HJS-GV-GrillTent-1Side-Khaki-d9N                         |
| Material                       | Alloy Steel (Frame), Polyester (Canopy)                  |
| Product Dimensions (L x W x H) | 203.94" x 48.03" x 97.24" (approx. 8 ft x 5 ft x 8.3 ft) |
| Item Weight                    | 61.7 Pounds  |
| Water Resistance Level         | Water Resistant  |
| Ultraviolet Light Protection   | UPF 100  |
| Assembly Required              | Yes  |
| UPC                            | 822255763536   |

## WARRANTY AND SUPPORT

This product is covered by a 30-day return policy from the date of purchase. For further assistance, product support, or to inquire about replacement parts, please contact Garvee customer service through the retailer where the product was purchased. Please have your model number (HJS-GV-GrillTent-1Side-Khaki-d9N) and proof of purchase available when contacting support.