

[Manuals.plus](#) /

› [SIEMENS](#) /

› SIEMENS EQ900 iAroma Superautomatic Coffee Machine TQ927E03 Instruction Manual

SIEMENS TQ927E03

SIEMENS EQ900 iAroma Superautomatic Coffee Machine

MODEL TQ927E03 INSTRUCTION MANUAL

Your guide to personalized coffee experiences.

1. Product Overview

The SIEMENS EQ900 iAroma is a superautomatic coffee machine designed to deliver a wide range of coffee specialties with precision and ease. It features advanced customization options, intelligent bean recognition, and intuitive controls.



Modo Barista activado. Ajusta cada detalle para obtener un café con un sabor realmente personalizado.

Image 1.1: The SIEMENS EQ900 iAroma Superautomatic Coffee Machine. This image displays the sleek, stainless steel design of the coffee machine with its large touchscreen interface and dual dispensing spouts.

Key features include a 6.8-inch touchscreen display, two separate bean containers for different coffee varieties, and a robust milk system for various milk-based beverages. The machine is engineered for consistent aroma and flavor, ensuring a high-quality coffee experience.

2. Setup and First Use

Before operating your SIEMENS EQ900 iAroma, follow these steps for initial setup:

1. **Unpacking:** Carefully remove all packaging materials and protective films from the appliance. Ensure all components listed in the welcome box are present.
2. **Water Hardness Test:** Use the provided test strips to determine your water hardness level. This information is crucial for proper descaling and filter usage.
3. **Install Water Filter:** Insert the BRITA INTENZA water filter into the water tank as per the filter instructions. This helps improve water quality and reduces descaling frequency.

4. **Fill Water Tank:** Fill the 2.3-liter water tank with fresh, cold water.
5. **Fill Bean Containers:** The machine features two bean containers. Fill them with your preferred whole coffee beans. The machine can hold approximately 540g of beans.
6. **Power Connection:** Connect the power cord to a grounded electrical outlet (240 Volts).
7. **Initial Rinse:** Upon first power-on, the machine will guide you through an initial rinse cycle to prepare the system for use. Follow the on-screen instructions.



Dos variedades de café, sin concesiones. Cambia entre tostados o descafeinado sin mezclar sabores.

Image 2.1: Filling the dual bean containers. This image shows a person pouring coffee beans into one of the two separate bean containers, highlighting the machine's ability to store and use two different coffee varieties without mixing flavors.

3. Operating Instructions

The EQ900 iAroma offers intuitive operation through its 6.8-inch touchscreen display.

3.1. Touchscreen Interface

Navigate through menus and select your desired beverages by simply swiping and tapping the responsive touchscreen.

Control total, de forma muy intuitiva. Solo tienes que deslizar el dedo y tocar la pantalla de 6,8 pulgadas.



Image 3.1: Intuitive touchscreen control. This image illustrates a hand interacting with the 6.8-inch touchscreen display, demonstrating the ease of selecting and customizing coffee beverages.

3.2. Barista Mode for Customization

Adjust up to 6 brewing parameters to personalize your coffee to your exact taste. These parameters include:

- Coffee Strength
- Cup Size
- Milk Amount
- Grinding Level
- Contact Time
- Brewing Temperature



Descubre todo el sabor de tus granos. Deja que beanIdent prepare la mezcla que buscas para los granos que hayas elegido.

Image 3.2: Barista Mode customization. This image shows the machine's display with various parameters for a Latte Macchiato, such as strength, cup size, and brewing temperature, being adjusted in Barista Mode.

3.3. beanIdent System

The beanIdent system automatically optimizes brewing parameters for your chosen coffee beans, ensuring a balanced flavor profile for every cup.

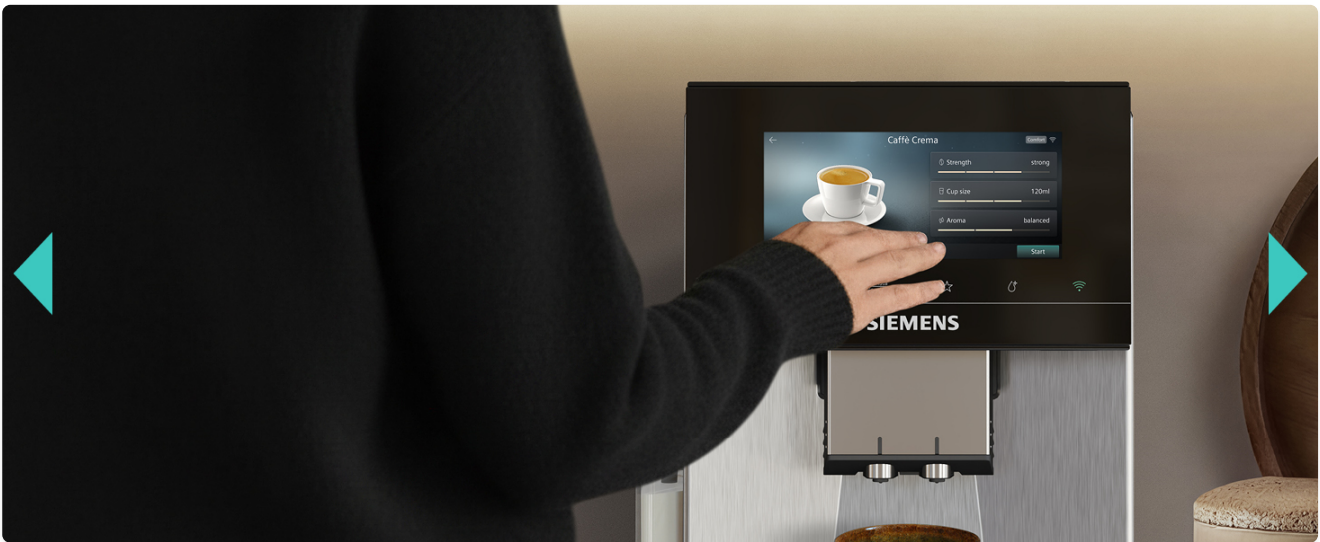


Image 3.3: beanIdent system. This image visually represents the beanIdent technology, which adapts brewing settings to different coffee beans for optimal flavor extraction.

3.4. User Profiles

Save up to 10 individual profiles, each with up to 10 personal coffee creations, for instant access to your favorite beverages.

Los favoritos de todos, a un solo toque. Guarda hasta 10 perfiles, cada uno con hasta 10 creaciones personales.

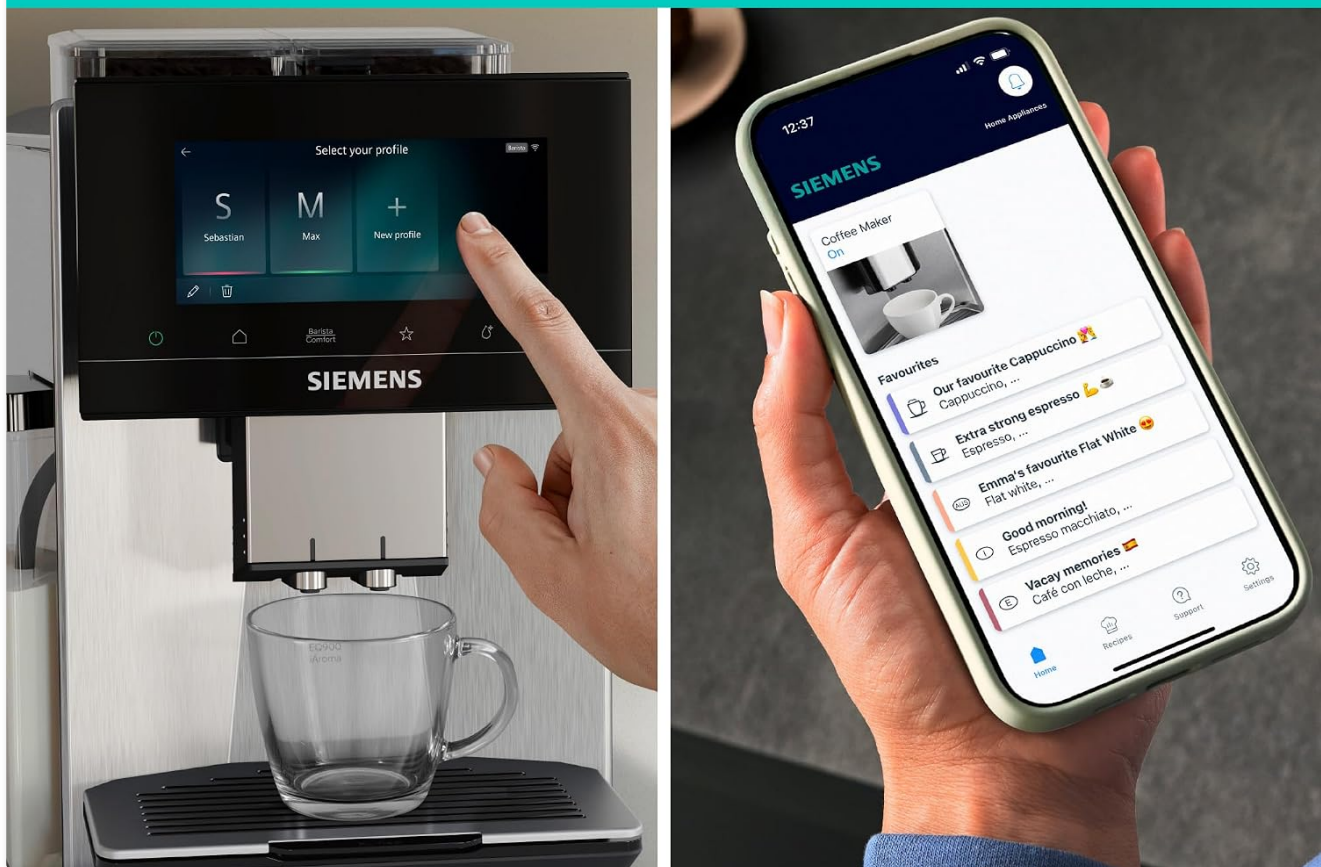


Image 3.4: User profile management. This image shows the touchscreen displaying options to select or create new user profiles, allowing multiple users to save their preferred coffee settings.

3.5. Beverage Selection

Explore a world of coffee with 41 delicious specialties available at your fingertips. From espresso to cappuccino and latte macchiato, the machine offers a wide variety of options.



Te espera un mundo de café. Descubre 41 deliciosas especialidades.

Image 3.5: Extensive beverage menu. This image displays the machine's screen showcasing various coffee specialties, indicating the wide selection of drinks available.

3.6. Adjustable Spout and XL Beverages

The adjustable coffee spout accommodates various cup sizes, including travel mugs and XL cups up to 16.5 cm in height. Enjoy extra-large beverages (up to 480 ml) or prepare an entire carafe of Caffè Crema.

Tu café para llevar. La bandeja ajustable es apta para tazas de viaje y tazas XL de hasta 16,5 cm de altura.



Image 3.6: Adjustable spout for larger cups. This image highlights the adjustable coffee spout, demonstrating its flexibility to fit tall travel mugs and XL cups.

3.7. Cup Warming Function

Pre-warm your cups using the active cup warmer or by dispensing hot water directly into them, ensuring your coffee stays hot longer.

Tazas calientes para el café que buscas



Precalentar con agua caliente



Utilizar el calentador de tazas activo

Image 3.7: Cup warming feature. This image shows two methods for warming cups: preheating with hot water and using the active cup warmer, ensuring optimal coffee temperature.

3.8. Home Connect App Integration

Control your coffee machine remotely, discover new recipes, receive updates, and even use voice control through the Home Connect app.

Todo en una sola aplicación: recetas, actualizaciones, control por voz y mucho más.

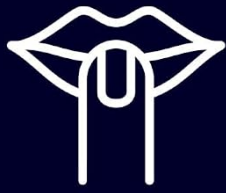


Home Connect

Image 3.8: Home Connect app. This image displays a smartphone screen showing the Home Connect app interface, highlighting its features for controlling the coffee machine and accessing recipes.

3.9. SuperSilent Technology

Enjoy freshly brewed coffee at any time without disturbance, thanks to the machine's superSilent technology.



Super Silent



Tan silenciosa que puedes preparar café recién hecho en cualquier momento gracias a la tecnología superSilent

Image 3.9: SuperSilent technology. This image shows the coffee machine in operation, emphasizing its quiet performance, allowing for coffee preparation at any time.

4. Maintenance and Cleaning

Regular maintenance ensures optimal performance and longevity of your coffee machine.

4.1. Removable Brewing Unit

For lasting hygiene and flavor, the brewing unit can be easily removed and rinsed thoroughly under running water.

Para una higiene y un sabor duraderos. La unidad de preparación se puede extraer fácilmente para limpiarla a fondo bajo el grifo.



Image 4.1: Brewing unit removal and cleaning. This image illustrates the multi-step process of removing the brewing unit from the machine and cleaning it under a tap for thorough hygiene.

4.2. autoMilk Clean System

The fully automatic autoMilk Clean system uses a burst of steam to clean the milk system after every milk-based beverage, ensuring effortless hygiene.



Higiene sin esfuerzo, el sabor que buscas. Un chorro de vapor totalmente automático limpia el sistema de leche después de cada bebida láctea.

Image 4.2: autoMilk Clean feature. This image shows steam cleaning the milk system, demonstrating the automatic hygiene function after preparing milk-based drinks.

4.3. Guided Cleaning and Descaling Programs

The machine features guided cleaning and descaling programs for convenience and time-saving maintenance. Follow the on-screen prompts for these processes.



Comodidad y ahorro de tiempo: con programas guiados de limpieza y descalcificación

Image 4.3: Maintenance menu and cleaning tablets. This image displays the machine's 'Care & Maintenance' screen, showing options for milk system cleaning, brewing unit cleaning, and residual water drainage, alongside cleaning and descaling tablets.

5. Troubleshooting

This section provides general guidance for common issues. For detailed troubleshooting, please refer to the comprehensive manual available for download or contact customer support.

- **No Coffee Dispensed:** Check water tank level, ensure brewing unit is correctly inserted, and verify bean container has sufficient beans.
- **Coffee Too Cold:** Ensure cups are pre-warmed. Check brewing temperature settings in Barista Mode.
- **Milk Not Frothing:** Clean the milk system thoroughly. Ensure the milk container is correctly attached and filled with cold milk.
- **Error Message on Display:** Note the specific error code or message and consult the full user manual or contact SIEMENS customer service for assistance.

6. Specifications

Feature	Specification
Brand	SIEMENS
Model Name	EQ900
Model Number	TQ927E03
Water Tank Capacity	2.3 Liters
Dimensions (DxWxH)	47 cm x 31.5 cm x 39.2 cm
Weight	13.3 Kilograms
Power	1500 Watts
Voltage	240 Volts
Material	Stainless Steel
Display Type	6.8-inch Touchscreen LED
Coffee Input Type	Whole Bean
Special Features	Automatic Shut-off, Self-cleaning, App Control, Milk Frother, Water Filter, Adjustable Brewing Intensity
Included Components	BRITA INTENZA Water Filter, Easy Milk Container, Water Hardness Test Strips, Welcome Box

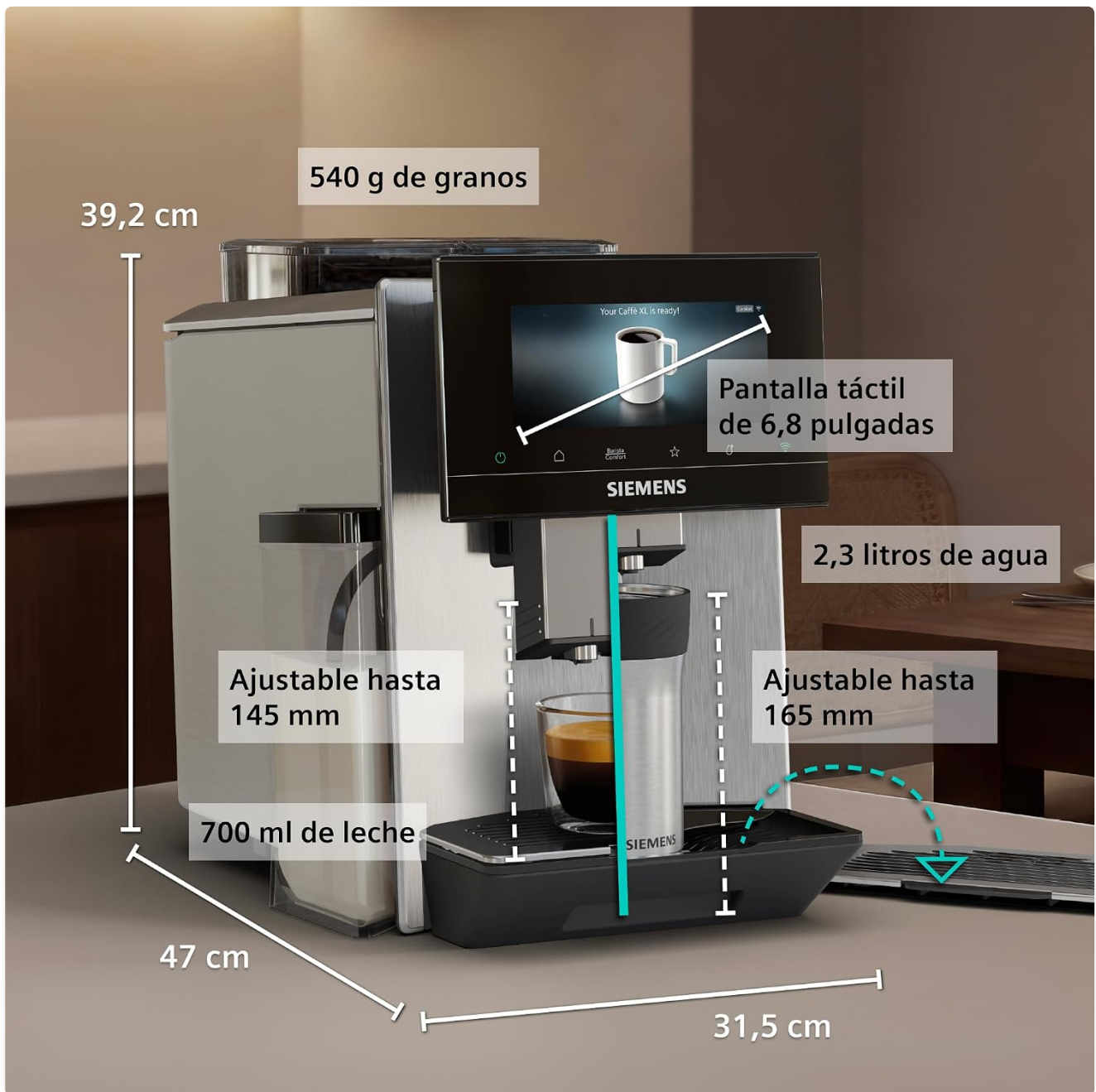


Image 6.1: Product dimensions and capacities. This image provides a visual representation of the coffee machine's dimensions (depth, width, height) and capacities for water, milk, and coffee beans.

7. Warranty and Support

7.1. Manufacturer's Warranty

The SIEMENS EQ900 iAroma coffee machine comes with a **three-year manufacturer's warranty**, covering defects in materials and workmanship under normal use.

7.2. Premium Repair Service

For any technical issues or repairs, SIEMENS offers a Premium Repair Service. This service includes expert repair within 7 days, home collection and delivery, and a replacement appliance if needed.

Pequeños electrodomésticos

Servicio Premium de reparación

- Reparación experta en 7 días.
- Recogida y entrega en tu domicilio.
- Aparato de sustitución si lo necesitas.

Contacta con tu especialista Siemens:

976 305 714



Image 7.1: Siemens Premium Repair Service. This image provides details about the Siemens Premium Repair Service, including contact information and service benefits.

Contact your Siemens specialist at: **976 305 714**

For more information and support, visit the official [SIEMENS Store](#).

© 2026 SIEMENS. All rights reserved.

This manual is for informational purposes only. Refer to the full official user manual for complete safety and operational instructions.