

[Manuals.plus](#) /

> [OLIXIS](#) /

> OLIXIS Metal Queen Bed Frame (14-Inch) Instruction Manual

OLIXIS OL3611V3Queen

OLIXIS Metal Queen Bed Frame (14-Inch) Instruction Manual

Model: OL3611V3Queen

PRODUCT OVERVIEW

The OLIXIS Metal Queen Bed Frame provides a sturdy and reliable foundation for your mattress. Designed for durability and ease of use, this 14-inch high frame eliminates the need for a box spring and offers ample under-bed storage. Its robust steel construction ensures stability and a quiet sleeping experience.



Image: The OLIXIS Metal Queen Bed Frame, fully assembled with a mattress and bedding, showcasing its minimalist design and under-bed clearance.

SAFETY INFORMATION

Please read and understand all safety warnings before assembly and use.

- Exercise caution around sharp edges during assembly and handling.
- Do not exceed the maximum weight capacity of **2200 pounds**. Overloading may cause damage or injury.
- Ensure all bolts and connections are securely tightened before use. Periodically check and retighten as necessary.
- Keep small parts away from children during assembly to prevent choking hazards.

PACKAGE CONTENTS

Verify that all components are present before beginning assembly. If any parts are missing or damaged, please contact customer support.

- Bed Frame Sections (Side Rails, Center Support, Legs)
- Steel Slats
- Assembly Hardware (Screws, Allen Wrench)
- Instruction Manual

SETUP AND ASSEMBLY

Assembly of the OLIXIS Metal Queen Bed Frame is designed to be straightforward and quick. All necessary tools are included. It is recommended to assemble the frame with two people.

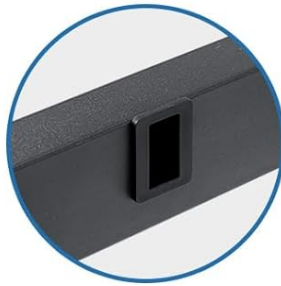
Assembly Steps:

1. **Unpack Components:** Carefully remove all parts from the packaging and lay them out on a clean, soft surface to prevent scratches. Identify each component using the parts list in the included manual.
2. **Assemble Frame Sections:** Connect the main frame sections (side rails and end rails) using the provided hardware. Ensure all connections are secure but do not fully tighten bolts until the entire frame is assembled.
3. **Install Center Support:** Attach the center support beam(s) and legs to the main frame. This provides crucial stability and weight distribution.
4. **Place Slats:** Position the steel slats across the frame. Many OLIXIS frames feature an "easy lock" or integrated design for quick slat installation without additional tools. Ensure all slats are properly seated and secured.
5. **Final Tightening:** Once all components are in place, go back and fully tighten all bolts and screws. This ensures the frame's stability and prevents squeaking.
6. **Add Mattress:** Carefully place your mattress directly onto the assembled slat system. A box spring is not required.

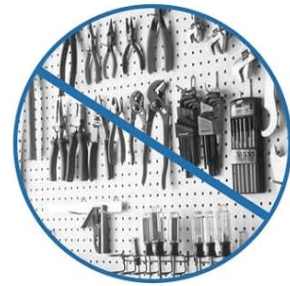
INSTALLATION IS EASY AND FAST



Integrated



Easy lock



No tools required



Image: Visual representation of the easy assembly features, including integrated connections, easy lock mechanisms, and the minimal tool requirement.

Assembly Video Guide:

Your browser does not support the video tag.

Video: An official assembly guide demonstrating the step-by-step process for setting up the OLIXIS Metal Bed Frame. This video is provided by the seller, AOSAI TECHNOLOGY (HONG KONG) LIMITED, and shows how to connect the frame components and install the slats.

OPERATING INSTRUCTIONS

The OLIXIS Metal Queen Bed Frame is designed for straightforward use once assembled.

- **Mattress Placement:** Place your queen-sized mattress directly onto the steel slats. A box spring is not necessary with this frame.
- **Under-Bed Storage:** Utilize the 14-inch clearance beneath the frame for convenient storage of boxes, bins, or other items. This helps maximize space in your bedroom.
- **Stability:** The reinforced steel construction and sturdy slats provide a stable and quiet sleeping surface. Avoid excessive jumping or uneven weight distribution to maintain frame integrity.

SPACIOUS UNDER-BED STORAGE



Image: A view of the generous 14-inch under-bed clearance, illustrating how storage containers can be neatly placed beneath the frame.

MAINTENANCE

Proper maintenance ensures the longevity and performance of your bed frame.

- **Cleaning:** Wipe the metal surfaces with a damp cloth to remove dust and dirt. Avoid abrasive cleaners or harsh chemicals that could damage the finish.
- **Regular Inspection:** Periodically check all bolts and connections to ensure they remain tight. Retighten any loose hardware to maintain stability and prevent squeaking.
- **Floor Protection:** The frame includes floor protection layers on the legs. Ensure these remain intact to prevent scratches on your flooring.

TROUBLESHOOTING

Refer to this section for solutions to common issues.

Problem	Possible Cause	Solution
Squeaking or Noise	Loose bolts or connections.	Tighten all bolts and screws on the frame. Ensure slats are properly seated.
Frame feels unstable or wobbly	Incomplete assembly or loose hardware.	Verify all frame sections are correctly connected and all hardware is fully tightened. Check that all support legs are making contact with the floor.
Mattress sagging	Improper slat placement or damaged slats.	Ensure all steel slats are evenly spaced and securely in place. Inspect slats for any damage and replace if necessary.

SPECIFICATIONS

Detailed specifications for the OLIXIS Metal Queen Bed Frame.

Model: OL3611V3Queen

Size: Queen (U.S. Standard)

Material: High-Strength Reinforced Steel

Product Dimensions (L x W x H): 80" x 60" x 14"

Under-Bed Clearance: Approximately 14 inches

Weight Capacity: 2200 Pounds

Color: Black

Assembly Required: Yes (Tools and video instructions included)

Box Spring Required: No

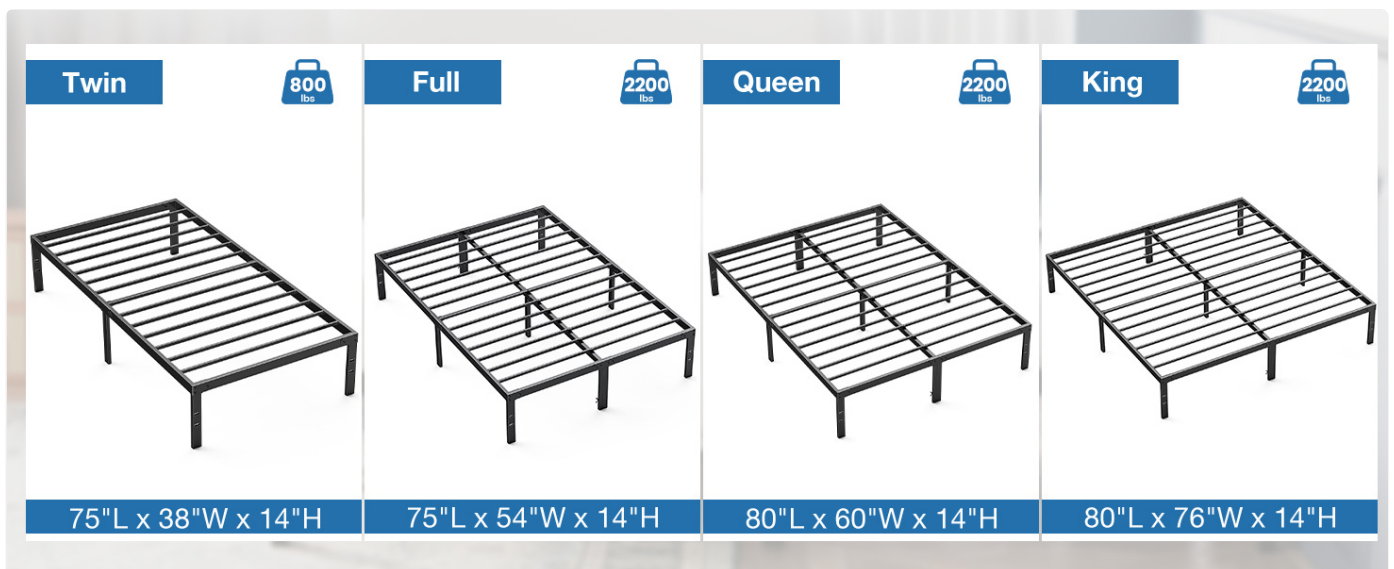


Image: A comparative chart displaying the dimensions and weight capacities for various OLIXIS bed frame sizes. The Queen size is rated for 2200 lbs.

WARRANTY AND SUPPORT

For warranty information or product support, please refer to the documentation included with your purchase or contact OLIXIS customer service directly. Contact details are typically available on the manufacturer's website or through your retailer.

For additional assistance, you may visit the [OLIXIS Store on Amazon](#).

