



[Manuals.plus](#) /

> [OLIXIS](#) /

> OLIXIS Metal King Bed Frame 14-Inch Instruction Manual

## OLIXIS OL3611V3OLKing

# OLIXIS Metal King Bed Frame 14-Inch Instruction Manual

Model: OL3611V3OLKing

## INTRODUCTION

---

Thank you for choosing the OLIXIS Metal King Bed Frame. This manual provides essential information for the safe assembly, operation, and maintenance of your new bed frame. Please read these instructions carefully before beginning assembly and retain them for future reference.



Image: OLIXIS Metal King Bed Frame in a bedroom environment.

## SAFETY INFORMATION

---

- **Weight Capacity:** This bed frame is designed to support a maximum weight of 2200 pounds. Do not exceed this limit to prevent damage or injury.
- **Edge Safety:** The edges and corners of the bed frame have been polished to blunt corners for user safety.
- **Stability:** The sturdy steel slats and center support legs enhance stability. Ensure all connections are tightened securely during assembly and checked periodically.
- **Assembly:** Keep children and pets away from the assembly area. Assemble on a soft, clean surface to prevent scratches.
- **Regular Checks:** Periodically inspect all bolts and connections to ensure they remain tight. Retighten as necessary.

## PACKAGE CONTENTS

---

Before assembly, verify that all components are present and undamaged. If any parts are missing or damaged, please contact customer support.

- Frame Sections (Side Rails, End Rails, Middle Support)
- Steel Slats
- Support Legs
- Hardware Kit (Bolts, Washers, Allen Wrench)
- Instruction Manual

## Product Information



**KING**

Dimensions  
80.12"×76.14"×14.01"

Weight Capacity  
1000 LBS



Image: Product dimensions for the King size bed frame. Note: The weight capacity shown in this image is 1000 LBS, while the product description states 2200 LBS. Please refer to the 2200 LBS capacity as per product specifications.

## ASSEMBLY INSTRUCTIONS

The OLIXIS Metal Bed Frame is designed for easy and quick assembly, often requiring no additional tools beyond what is provided. Follow these steps for a smooth setup:

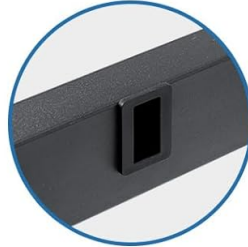
1. **Unpack Components:** Carefully remove all parts from the packaging and lay them out on a clean, soft surface to prevent damage.
2. **Assemble Main Frame:** Connect the side and end rails using the provided hardware. Ensure all connections are finger-tightened initially.
3. **Attach Support Legs:** Securely attach the support legs to the frame.

4. **Install Center Slats:** Insert the center slats into their designated slots. The frame features an easy-lock mechanism for secure fitting.
5. **Final Tightening:** Once all parts are in place, use the included Allen wrench to fully tighten all bolts. Do not overtighten.

## INSTALLATION IS EASY AND FAST



**Integrated**



**Easy lock**



**No tools required**



Image: Key features for easy and fast installation, including integrated parts and an easy-lock system.

### Assembly Videos

#### Video: Steps for installing the bed frame

Your browser does not support the video tag.

This video provides a detailed visual guide on the step-by-step installation process for the OLIXIS bed frame.

#### Video: How to assembly

Your browser does not support the video tag.

Watch this video for a quick overview and demonstration of how to assemble your OLIXIS bed frame.

### OPERATING INSTRUCTIONS

---

Your OLIXIS Metal King Bed Frame is designed for optimal comfort and convenience.

- **Mattress Placement:** This bed frame does not require a box spring. Simply place your standard King-sized mattress directly onto the steel slats.
- **Under-Bed Storage:** The 14-inch height provides ample space for under-bed storage, helping to keep your room tidy. Utilize this space for bins, luggage, or other items.

- **Versatile Use:** Suitable for various settings including bedrooms, guest rooms, dormitories, and hotels.



Image: Demonstration of the 14-inch under-bed storage space, ideal for organizing various items.

## MAINTENANCE

---

To ensure the longevity and appearance of your OLIXIS Metal Bed Frame, follow these simple maintenance guidelines:

- **Cleaning:** Wipe the metal surfaces with a damp cloth. Avoid harsh chemicals or abrasive cleaners that could damage the finish. The smooth metal surface is designed to be easy to clean and stain-resistant.
- **Inspection:** Periodically check all bolts and connections for tightness. Retighten any loose hardware to maintain stability and prevent squeaking.

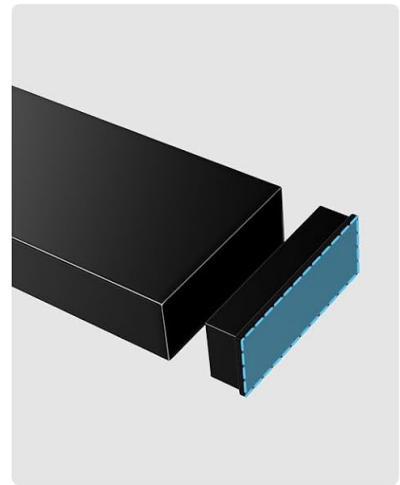
# High-Strength Reinforced Steel



**Sturdy steel slats  
no squeaking**



**Stable metal structure  
no shaking**



**Floor protection  
layer design**

Image: Details of the high-strength reinforced steel construction, including sturdy slats and floor protection.

## TROUBLESHOOTING

If you encounter any issues with your bed frame, refer to the following common solutions:

- **Squeaking or Rocking:** If the bed frame squeaks or rocks, it is likely due to loose connections. Re-check and tighten all bolts and screws on the frame, especially those connecting the side rails and support legs.
- **Uneven Surface:** Ensure the bed frame is placed on a flat, level surface. Adjust the position if necessary.
- **Missing Parts:** If you discover any missing parts during assembly, do not proceed. Contact customer support immediately for assistance.

## SPECIFICATIONS

|                     |                |
|---------------------|----------------|
| <b>Brand</b>        | OLIXIS         |
| <b>Model Number</b> | OL3611V3OLKing |

|                                       |                      |
|---------------------------------------|----------------------|
| <b>Size</b>                           | King (U.S. Standard) |
| <b>Material</b>                       | Metal                |
| <b>Product Dimensions (L x W x H)</b> | 80"L x 76"W x 14"H   |
| <b>Ground to Item Distance</b>        | 14 Inches            |
| <b>Maximum Weight Recommendation</b>  | 2200 Pounds          |
| <b>Item Weight</b>                    | 39.93 Pounds         |
| <b>Color</b>                          | Black                |
| <b>Assembly Required</b>              | Yes                  |

## WARRANTY INFORMATION

---

OLIXIS products are manufactured to high-quality standards. For specific warranty details regarding your bed frame, please refer to the warranty card included in your package or contact OLIXIS customer support. Keep your purchase receipt as proof of purchase for any warranty claims.

## CUSTOMER SUPPORT

---

If you have any questions, require assistance with assembly, or need to report missing/damaged parts, please contact OLIXIS customer support through the retailer where you purchased the product or visit the official OLIXIS website for contact information.

We are committed to providing you with a satisfactory experience.