

HUAYEE HY12C

HUAYEE HY12C 1.2T Mini Excavator Instruction Manual

Model: HY12C | Brand: HUAYEE

1. INTRODUCTION

This manual provides essential information for the safe and efficient operation, maintenance, and troubleshooting of your HUAYEE HY12C 1.2T Mini Excavator. Please read this manual thoroughly before operating the machine to ensure proper usage and to prevent injury or damage.

The HUAYEE HY12C is a compact and powerful 1.2-ton mini excavator, equipped with a 13.5HP gasoline engine. It is designed for various tasks including residential landscaping, utility trenching, and light construction projects. Its compact size allows for maneuverability in confined spaces, and the included hydraulic thumb enhances its versatility for material handling.



Figure 1: The HUAYEE HY12C Mini Excavator, showcasing its compact design and primary attachments.

2. SAFETY INFORMATION

Operating heavy machinery requires strict adherence to safety protocols. Failure to follow these guidelines can result in serious injury or death.

- Always wear appropriate personal protective equipment (PPE), including a hard hat, safety glasses, high-visibility vest, and sturdy footwear.
- Ensure the work area is clear of bystanders, especially children and pets.
- Inspect the excavator before each use for any signs of damage, leaks, or loose components.
- Never operate the machine under the influence of alcohol or drugs.
- Familiarize yourself with all controls and their functions before starting the engine.
- Maintain a safe distance from power lines, underground utilities, and unstable ground.
- Secure the machine when transporting or parking to prevent accidental movement.

3. PRODUCT OVERVIEW AND FEATURES

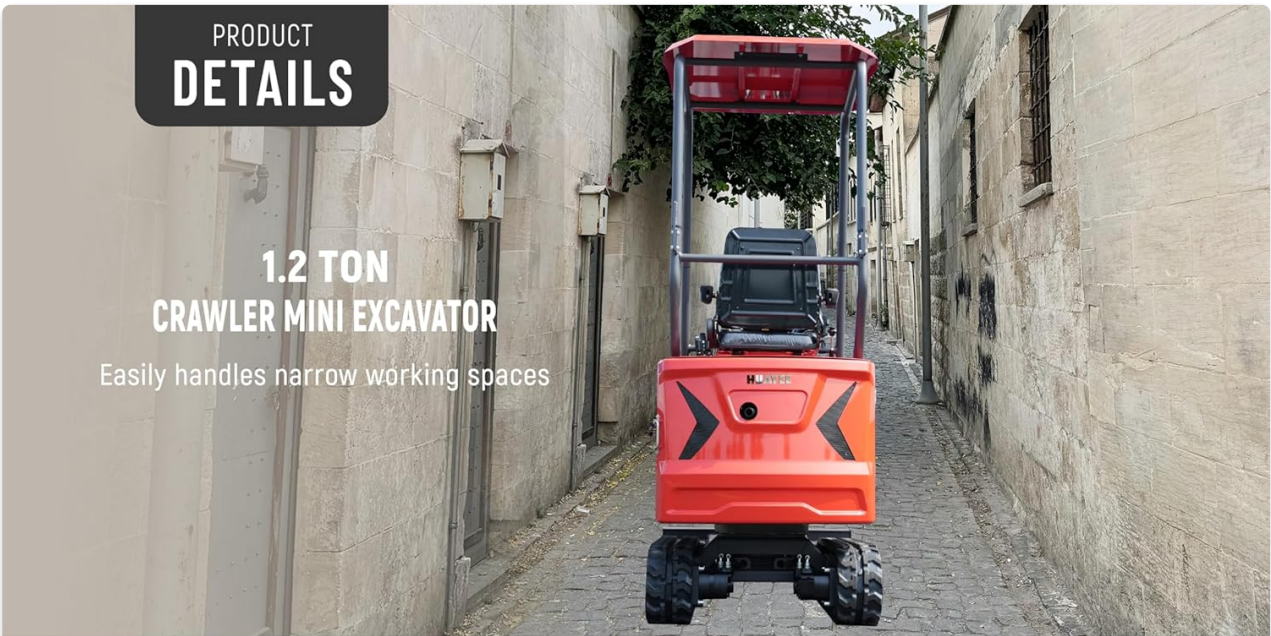
The HY12C Mini Excavator is engineered for durability and performance in various demanding environments. Key features include:

- **Powerful Engine:** Equipped with a 13.5HP gasoline engine for consistent power.
- **Hydraulic Thumb:** Allows for efficient grasping, lifting, and sorting of materials like rocks, branches, and debris.
- **Durable Attachments:** Includes a 200mm digging bucket for precision trenching and a heavy-duty ripper for breaking compacted ground.
- **Compact Design:** Lightweight 1.2-ton package with a small footprint for navigating tight spaces.
- **Special Rubber Tracks:** Designed for easy movement across various terrains without damaging surfaces like roads or lawns.
- **Robust Canopy:** Features four heavy-duty pipes for structural integrity and operator protection. The canopy can be opened for access in smaller spaces.
- **Easy Maintenance Access:** A large rear door provides convenient access to the engine, hydraulic pump, and swing motor for inspection and service.

PRODUCT
DETAILS

**1.2 TON
CRAWLER MINI EXCAVATOR**

Easily handles narrow working spaces



Mechanical operation

It is suitable for various engineering tasks and has the advantages of high efficiency, low cost, flexible operation, simple structure and strong adaptability.



Hydraulic thumbs

Work with the bucket to accomplish more your needs.

Figure 2: Detailed view of the mechanical operation controls and the hydraulic thumb, highlighting its material handling capabilities.



Hydraulic cylinder

Uniquely designed hydraulic cylinder with stronger sealing, safe protection and avoid collision.



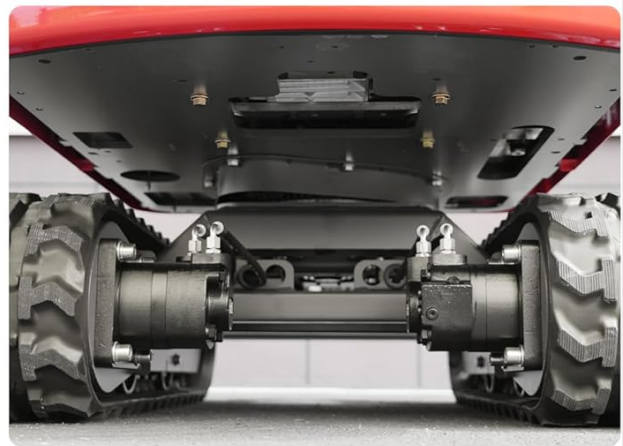
Adjustable seat

The seat can be adjusted forward and backward, left and right to make the driver more comfortable.



Rubber track

Ultimate grip low noise, easy rotation and walking, perfect for various complex terrain.



Reinforced chassis

The slewing support mounting plate and the bridge are integrally formed to enhance the strength of use and simplify the welding process.

Figure 3: Key structural components such as the hydraulic cylinder, adjustable operator seat, durable rubber tracks, and reinforced chassis.



Figure 4: Essential indicators and components including the hydraulic oil gauge, engine switch, travel motor, and hydraulic cylinder.

4. SETUP

Before initial operation, ensure the following setup procedures are completed:

1. **Fueling:** Fill the fuel tank with appropriate gasoline (refer to specifications for fuel type).
2. **Engine Oil:** Check the engine oil level using the dipstick. Add oil if necessary, ensuring it meets the manufacturer's recommendations.
3. **Hydraulic Fluid:** Verify the hydraulic fluid level. Low fluid levels can impair performance and damage the system.
4. **Battery Connection:** Ensure the battery is securely connected and charged.
5. **Attachment Installation:** Securely attach the desired implement (digging bucket or ripper) according to the attachment instructions. Ensure all pins and safety mechanisms are correctly engaged.

5. OPERATING INSTRUCTIONS

Familiarize yourself with the control layout before starting the machine. The HY12C features intuitive controls for precise operation.



Figure 5: Overview of the operator's control panel, showing the layout of joysticks and levers.

5.1 Starting the Engine

1. Ensure the safety lever is in the locked position.
2. Turn the ignition key to the 'ON' position.
3. Engage the choke if the engine is cold.
4. Turn the ignition key to 'START' until the engine fires. Release the key once started.
5. Allow the engine to warm up for a few minutes before operating.

5.2 Basic Operation

- **Right Joystick:** Controls the boom (up/down) and bucket (load/unload).
- **Left Joystick:** Controls the second boom (up/down) and machine swing (left/right).
- **Travel Levers:** Located at the front, these control forward and reverse movement of the tracks.
- **Dozer Blade Lever:** Controls the dozer blade for raising and lowering.
- **Hydraulic Thumb Control:** Use the dedicated control to operate the hydraulic thumb for gripping objects.

5.3 Working with Attachments

The HY12C is designed for easy attachment changes. The special valve allows for quick connection of hydraulic attachments like augers or different buckets.

Your browser does not support the video tag.

Video 1: Demonstration of the HUAYEE HY12C Mini Excavator in operation, showcasing its digging and material handling capabilities with the hydraulic thumb.

6. MAINTENANCE

Regular maintenance is crucial for the longevity and optimal performance of your excavator.

- **Daily Checks:** Before each use, check fluid levels (engine oil, hydraulic fluid, fuel), inspect for leaks, and ensure all moving parts are free of debris.
- **Engine Service:** Regularly check and change engine oil and air filter as per the engine manufacturer's schedule. The large rear access door facilitates easy inspection and service of the engine compartment.
- **Hydraulic System:** Inspect hydraulic hoses and connections for wear or damage. Ensure the hydraulic pipes are protected by their spring covers.
- **Greasing:** Lubricate all grease points on the cylinders and moving joints to reduce wear and noise.
- **Track Inspection:** Check the rubber tracks for damage or excessive wear.



Figure 6: The open rear access door provides clear visibility and easy access to the engine and hydraulic components for maintenance.

7. TROUBLESHOOTING

This section provides solutions for common operational issues. For problems not listed here, contact customer

support.

Problem	Possible Cause	Solution
Engine does not start	Low fuel, dead battery, faulty ignition.	Check fuel level, charge/replace battery, inspect ignition system.
Loss of hydraulic power	Low hydraulic fluid, clogged filter, pump issue.	Check fluid level, replace filter, contact service for pump inspection.
Tracks not moving	Obstruction in tracks, hydraulic motor issue.	Clear tracks, inspect hydraulic lines to motors.

8. SPECIFICATIONS

Detailed technical specifications for the HY12C Mini Excavator:

Feature	Specification
Brand	HUAYEE
Model Number	HY12C
Item Weight	2100 Pounds
Color	Red
Engine Type	4 Stroke
Engine Displacement	420 Milliliters
Fuel Type	Gasoline
Maximum Horsepower	13.5 Horsepower
Fuel Capacity	6.6 Liters
Item Dimensions (D x W x H)	92"D x 37"W x 91"H
Included Components	Hydraulic thumb

9. WARRANTY AND SUPPORT

Your HUAYEE HY12C Mini Excavator comes with a **1-year manufacturer's warranty**. For any questions, technical assistance, or warranty claims, please contact HUAYEE customer support. We are committed to providing responsive after-sales support to ensure your satisfaction and the smooth operation of your equipment.

For professional delivery and unloading services, please refer to your purchase agreement or contact your

dealer.