



[Manuals.plus](#) /

> [Ahomly](#) /

> Ahomly 4 Piece Patio Furniture Set Instruction Manual (Model B0GJCXY2LK)

Ahomly B0GJCXY2LK

Ahomly 4 Piece Patio Furniture Set Instruction Manual

Model: B0GJCXY2LK

INTRODUCTION

Thank you for choosing the Ahomly 4 Piece Patio Furniture Set. This manual provides essential information for the safe assembly, operation, maintenance, and troubleshooting of your new outdoor furniture. Please read these instructions carefully before assembly and retain them for future reference.

SAFETY INFORMATION

WARNING: Failure to follow these safety instructions may result in injury or damage to the product.

- Do not load more than 660 pounds on the loveseat.
- Do not load more than 330 pounds on each armchair.
- Do not load more than 110 pounds on the coffee table.
- Exercise caution around sharp edges during assembly and use.
- Ensure all bolts and fasteners are securely tightened before use. Periodically check and re-tighten as necessary.
- Place furniture on a flat, stable surface to prevent tipping.
- Keep children and pets away from the assembly area.

PACKAGE CONTENTS

Your Ahomly 4 Piece Patio Furniture Set includes the following components:

- 1 x Loveseat
- 2 x Rocking Chairs
- 1 x Glass Top Coffee Table
- 3 x Cushions (for loveseat and rocking chairs)

- All necessary hardware and tools for assembly.



Image: Overview of the Ahomly 4 Piece Patio Furniture Set, showing the loveseat, two rocking chairs, and coffee table.

ASSEMBLY INSTRUCTIONS

Assembly is required for this patio furniture set. Please follow the steps below carefully. It is recommended to assemble the furniture on a soft, clean surface to prevent scratches.

1. **Unpack Components:** Carefully remove all parts from the packaging. Verify that all components listed in the "Package Contents" section are present.
2. **Identify Parts:** Familiarize yourself with the different parts and hardware by referring to the included instruction manual diagrams.
3. **Assemble Rocking Chairs:**
 - Attach the seat and back sections to the rocking chair frames using the provided screws and Allen key.
 - Ensure all holes are aligned before tightening screws. Tighten each side evenly to prevent misalignment.
4. **Assemble Loveseat:**
 - Connect the loveseat seat and back sections to its frame using the appropriate hardware.
 - Tighten all screws firmly but do not overtighten.
5. **Assemble Coffee Table:**
 - Attach the legs to the coffee table frame.
 - Carefully place the glass top onto the table frame, ensuring it is securely seated.
6. **Final Tightening:** Once all pieces are assembled, go back and ensure all screws and bolts are fully tightened.
7. **Place Cushions:** Position the thick cushions on the loveseat and rocking chairs for comfort.

Smooth Rocking Design

Slight Rocking Allows You to Enjoy Your Leisure Time



Image: The fully assembled Ahomly 4 Piece Patio Furniture Set, including the loveseat, two rocking chairs, and coffee table, arranged on an outdoor patio.

OPERATING INSTRUCTIONS

Your Ahomly Patio Furniture Set is designed for comfortable outdoor relaxation. Here are some key features and usage tips:

- **Comfortable Rocking Design:** The rocking chairs feature an optimized ergonomic seat and armrests to reduce knee flexion, providing a relaxing and smooth rocking motion. Anti-slip strips are integrated for stability.
- **Versatile Placement:** This set is suitable for various outdoor spaces such as patios, porches, backyards, balconies, and poolside areas.
- **Cushion Comfort:** The 3-inch thick cushions offer enhanced comfort.



Image: Detailed dimensions of the Ahomly loveseat, rocking chair, and coffee table, illustrating their compact size suitable for various outdoor spaces.



Image: Close-up showing the smooth rocking design of the chairs, highlighting anti-slip strips and the rust-proof steel frame for stability and comfort.

MAINTENANCE

Proper care will extend the life and appearance of your Ahomly Patio Furniture Set:

- **Cleaning Wicker:** The hand-woven PE rattan is adaptable to all weather conditions. Clean with a mild soap and water solution, then rinse thoroughly and allow to air dry.
- **Cushion Care:** The cushions are designed to be flexible. For cleaning, the cushion covers feature a detachable zipper, allowing for easy removal and washing. Ensure cushions are completely dry before re-attaching or storing to prevent mildew.
- **Frame Care:** The sturdy steel frame is treated with anti-rust spraying and a water-resistant covercoat. Wipe down the frame with a damp cloth as needed. Avoid harsh chemicals that may damage the finish.
- **Glass Table Top:** Clean the glass top with a standard glass cleaner and a soft cloth.
- **Seasonal Storage:** During prolonged periods of non-use or harsh weather, it is recommended to cover the furniture or store it indoors to protect it from the elements.

Durable Metal Frame

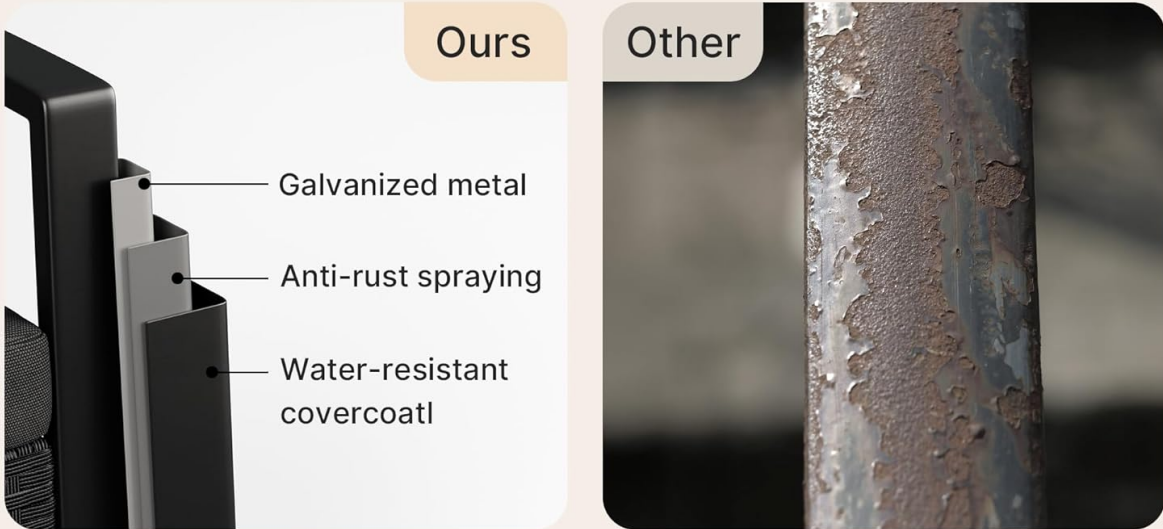
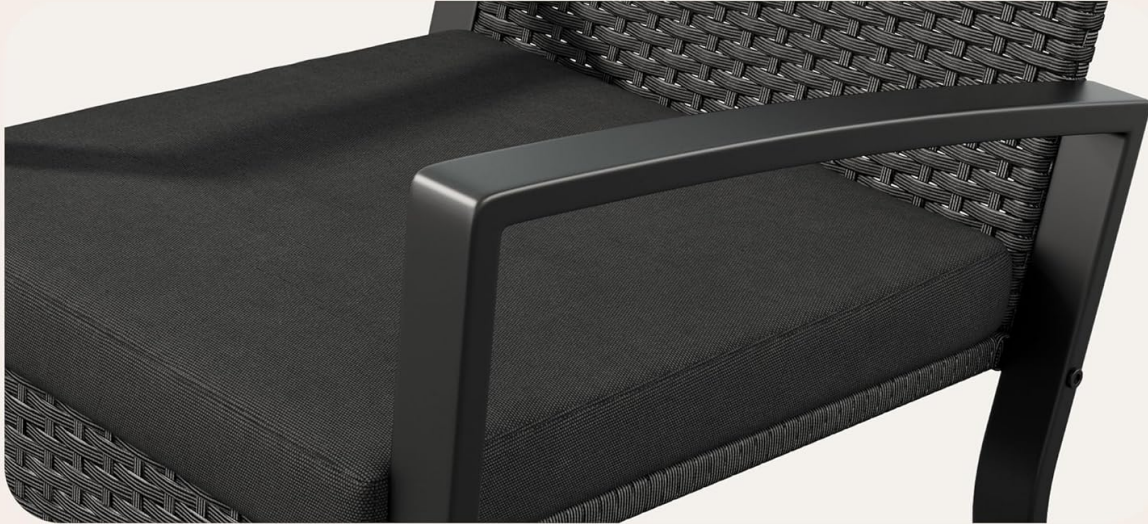


Image: Illustration of the durable metal frame, showing galvanized metal, anti-rust spraying, and a water-resistant covercoat for enhanced longevity.

Exquisite Comfort Rocking Design



Image: Close-up details of the hand-woven PE rattan and the detachable zipper on the cushions, highlighting ease of maintenance and sturdy construction.

If you encounter any issues with your Ahomly Patio Furniture Set, please refer to the following common solutions:

- **Wobbly Furniture:** Ensure all bolts and screws are securely tightened. If the issue persists, check that the furniture is placed on an even surface. Adjustable feet may be present on some models to level the furniture.
- **Difficulty Assembling:** Re-read the assembly instructions carefully. Ensure you are using the correct hardware for each step and that parts are oriented correctly. Do not force components together. If holes do not align, slightly loosen surrounding screws, adjust the part, and then re-tighten evenly.
- **Damaged or Missing Parts:** If you receive damaged parts or find that components are missing, please contact Ahomly customer support immediately for assistance.
- **Cushions Not Drying:** While cushions are designed to dry easily, prolonged exposure to rain can saturate them. Ensure cushions are placed in a well-ventilated area to dry completely. Consider bringing cushions indoors during heavy rain or using waterproof covers.

SPECIFICATIONS

Feature	Detail
Brand	Ahomly
Model Number	B0GJCXY2LK
Set Name	Ahomly 4 Piece Patio Furniture Set
Color	Black
Material Type	Wicker (PE Rattan)
Frame Material	Steel (Galvanized, Anti-rust spraying, Water-resistant covercoat)
Style	Modern
Assembly Required	Yes
Loveseat Dimensions	54"L x 23.4"W x 30.5"H
Single Rocking Chair Dimensions	22.8"L x 25.6"W x 28.7"H
Coffee Table Dimensions	29.5"L x 15.7"W x 14.9"H
Cushion Thickness	3 inches
Loveseat Weight Capacity	660 pounds
Armchair Weight Capacity	330 pounds (each)
Coffee Table Weight Capacity	110 pounds

WARRANTY & SUPPORT

Ahomly Direct offers customer support for this product. For any questions, concerns, or assistance with your Ahomly 4 Piece Patio Furniture Set, please contact Ahomly Direct customer service. Information regarding specific warranty periods and return policies can typically be found on the product's purchase

page or by contacting the seller directly.

This product is eligible for 30-day easy returns through the seller, Ahomly Direct.