

[Manuals.plus](#) /

> [Nelko](#) /

> Nelko PP03 Portable Photo Printer User Manual

Nelko PP03

Nelko PP03 Portable Photo Printer User Manual

Model: PP03

1. INTRODUCTION

This manual provides detailed instructions for the setup, operation, and maintenance of your Nelko PP03 Portable Photo Printer. Please read this manual thoroughly before using the device to ensure proper function and longevity.



Image: The Nelko PP03 Portable Photo Printer, a compact white device, shown with several small, colorful printed photos scattered around it, demonstrating its output.

2. WHAT'S IN THE BOX

Verify that all items listed below are included in your package:

- 1 x Nelko PP03 Mini Photo Printer
- 1 x Ink Cartridge
- 50 x Photo Paper (30x White, 10x Macaron, 10x Heart)
- 1 x USB-C Cable
- 1 x User Manual
- 1 x Guide Card

AI IMAGE GENERATION

AI makes you full of creativity

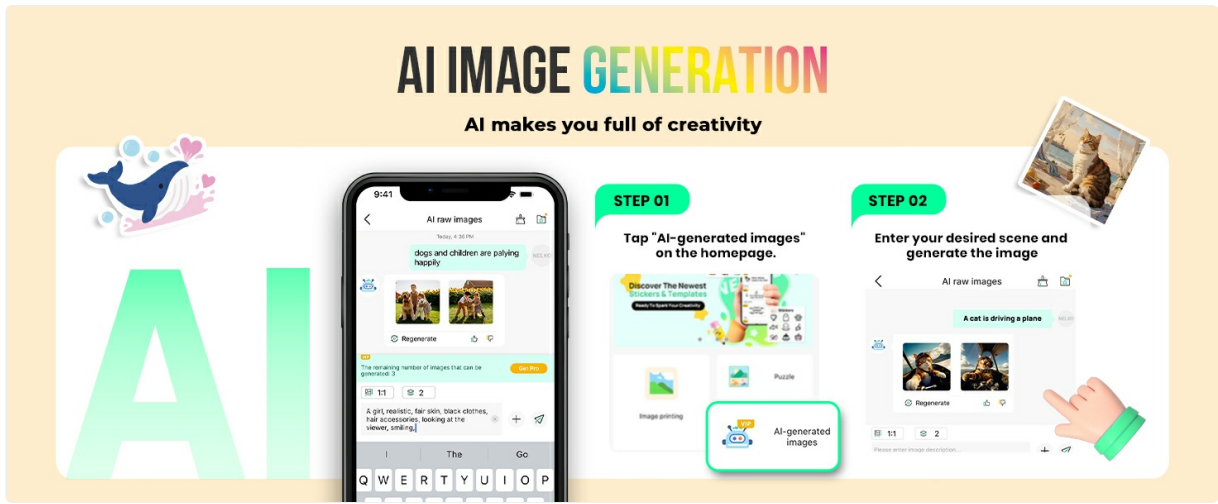


Image: A visual representation of the Nelko PP03 printer and its accessories, including the ink cartridge, various photo papers, USB-C cable, user manual, and guide card, laid out on a desk.

3. SETUP GUIDE

3.1. App Download and Bluetooth Connection

1. Download the Nelko APP or Labelnize APP from the App Store (iOS) or Google Play Store (Android).
2. Turn on the power button located on the right side of the printer.
3. Enable Bluetooth on your smartphone.
4. Open the Nelko APP and connect to the printer via Bluetooth. The printer will appear as "PP03" in the app's device list.

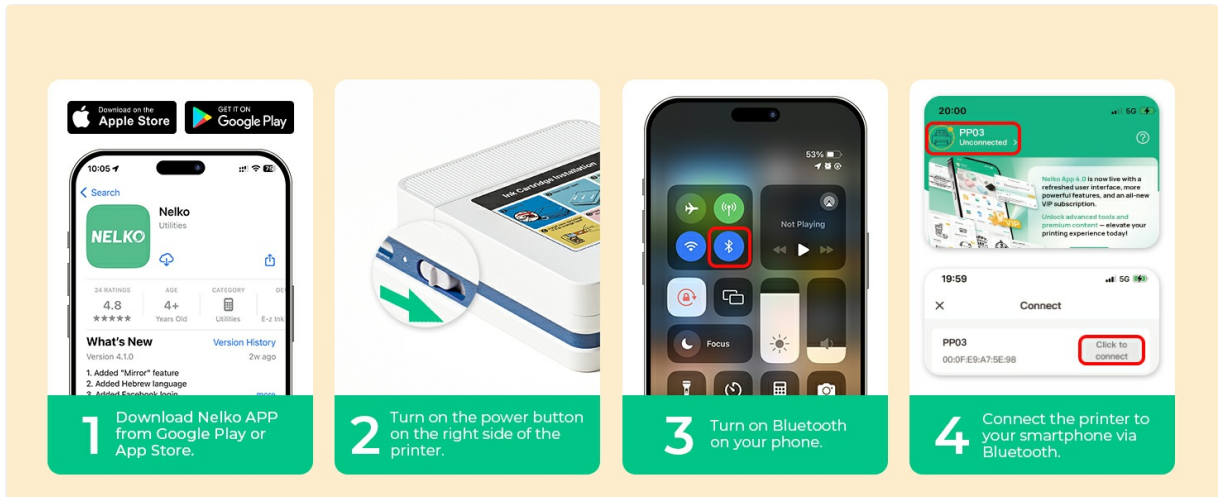


Image: A four-step visual guide showing how to download the Nelko app, power on the printer, enable Bluetooth on a phone, and connect the PP03 printer within the app.

3.2. Photo Paper Installation

1. Open the bottom paper compartment on the side of the printer.
2. Place the photo paper with the smooth, glossy side facing down into the compartment. Ensure the arrow on the back of the paper points towards the printer's interior.
3. Gently push the paper into the compartment until it is seated correctly.
4. Close the paper compartment cover securely.

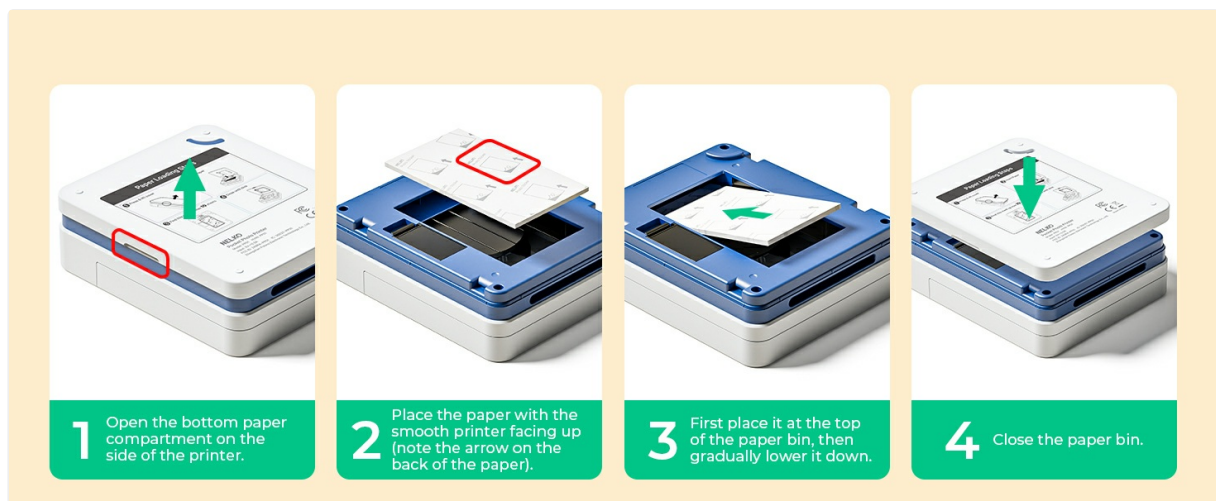


Image: A four-step visual guide demonstrating how to open the paper compartment, insert photo paper correctly (smooth side down), and close the compartment on the Nelko PP03 printer.

3.3. Ink Cartridge Installation

1. Turn on the power button of the machine.
2. Open the ink cartridge compartment. Ensure it is pulled completely open.
3. Wait for approximately 10 seconds for the ink cartridge compartment to center itself.
4. Tear off the ink cartridge packaging.
5. **Important:** Do not touch the chip or the nozzles of the ink cartridge.
6. Tear off the protective plastic tape from the ink cartridge.
7. Install the cartridge into the correct printer slot, ensuring it clicks into place.



Image: A seven-step visual guide illustrating the process of installing an ink cartridge into the Nelko PP03 printer, including removing packaging and protective tape, and correctly inserting the cartridge.

4. OPERATING INSTRUCTIONS

4.1. Editing and Printing Photos

Once your printer is connected and loaded with paper and ink, you can begin printing:

1. Open the Nelko APP on your smartphone.
2. Select the photo you wish to print from your device's gallery.
3. Utilize the app's editing features to customize your photo. This includes filters, borders, stickers, and

collage tools. The app also supports AI image generation and offers various templates.

4. Confirm your selections and tap the print button within the app.

5. The printer will process and print your photo.



Image: A user interacting with the Nelko app on a smartphone, showing various editing options and the process of sending a photo to the PP03 printer for printing.

4.2. Advanced App Features

The Nelko app provides additional creative tools:

- **AI Image Generation:** Create unique images based on text prompts directly within the app.
- **Templates:** Access a library of over 600 templates, 1800 materials, 600 frames, 1200 icons, and 100 text styles for personalized projects.



Image: A two-step visual guide demonstrating the AI image generation feature within the Nelko app, showing how to access it and input text to generate images.



Image: An overview of the Nelko app's creative resources, including categories for templates, materials, text, icons, and frames, highlighting the variety available for photo customization.

5. MAINTENANCE

To ensure optimal performance and extend the life of your Nelko PP03 printer, follow these maintenance guidelines:

- **Cleaning:** Regularly wipe the exterior of the printer with a soft, dry cloth. Do not use liquid cleaners or abrasive materials.
- **Ink Cartridge Care:** Store spare ink cartridges in a cool, dry place away from direct sunlight. Replace cartridges as needed when print quality degrades or the app indicates low ink.
- **Paper Storage:** Keep photo paper in its original packaging in a dry environment to prevent moisture absorption, which can affect print quality.
- **Avoid Obstructions:** Ensure the paper output slot is clear of any debris or obstructions.

6. TROUBLESHOOTING

If you encounter issues with your Nelko PP03 printer, refer to the following common problems and solutions:

Problem	Possible Cause	Solution
Printer does not turn on	Low battery or power issue	Charge the printer using the provided USB-C cable. Ensure the power button is pressed firmly.
Cannot connect via Bluetooth	Bluetooth is off on phone or printer is not discoverable	Ensure Bluetooth is enabled on your phone and the printer is powered on. Restart both devices and try connecting again through the Nelko APP.
Poor print quality (streaks, faded colors)	Low ink, incorrect paper loading, or dirty print head	Check ink cartridge levels and replace if necessary. Ensure photo paper is loaded correctly (smooth side down). Refer to the app for print head cleaning options if available.
Paper jam	Improper paper loading or foreign object	Turn off the printer. Carefully open the paper compartment and gently remove any jammed paper. Ensure paper is loaded correctly.

Problem	Possible Cause	Solution
App crashes or freezes	Software glitch or outdated app version	Close and restart the app. Check for app updates in your device's app store. Restart your smartphone if the issue persists.

7. SPECIFICATIONS

Feature	Detail
Brand	Nelko
Model Name	PP03
Connectivity Technology	Bluetooth 5.0
Printing Technology	Inkjet
Printer Output	Color
Maximum Print Speed (Color)	90 pages per minute (Note: This speed typically refers to small format photo printing cycles)
Product Dimensions (D x W x H)	5.51" x 9.45" x 2.68"
Maximum Media Size	45x60mm (Photo Paper Size: 52x90mm)
Print Media	Glossy photo paper
Ink Color	Cyan, Magenta, Yellow, Black
Maximum Sheet Capacity	10 sheets
Duplex Printing	Simplex (No dual-sided printing)
Specific Uses	Photo printing, Personalized projects, Travel, School, Home, Business

8. WARRANTY AND SUPPORT

Warranty: The Nelko PP03 Portable Photo Printer comes with a 1-year warranty from the date of purchase. Please retain your proof of purchase for warranty claims.

Customer Support: For technical assistance, troubleshooting not covered in this manual, or warranty inquiries, please contact Nelko customer support through the official Nelko website or the contact information provided with your product packaging. You may also refer to the Nelko APP for additional support resources.