



[Manuals.plus](#) /

› [BITIWEND](#) /

› BITIWEND LED Pool Fountain Instruction Manual (Model: Pool Fountain)

BITIWEND Pool Fountain

BITIWEND LED Pool Fountain Instruction Manual

Model: Pool Fountain

INTRODUCTION

This manual provides detailed instructions for the setup, operation, and maintenance of your BITIWEND LED Pool Fountain. Designed to enhance your pool experience, this fountain combines a powerful waterfall spray with dynamic LED lighting, offering both aesthetic appeal and functional benefits.

Transform Your Pool Into A Glowing Paradise



The LED Pool Fountain transforms your pool into a glowing paradise, creating a vibrant atmosphere for night swimming.

Key Features:

- **Dual-Benefit Design:** Combines a waterfall spray with 20 dynamic light modes, 7 core colors, and 4 speed options for customizable ambiance.
- **Smart Remote & Timer Control:** Easily adjust 4 brightness levels and set auto-off timers (2H/4H/6H) using the included remote control.
- **Detachable & Rechargeable Light Pod:** Features a light pod that detaches for convenient USB charging, providing up to 12 hours of illumination.
- **Universal Compatibility:** Includes two specialized adapters to fit both 1.73" and 3.2" threaded return jets, suitable for most inground and above-ground pools.
- **Natural Cooling & Durable Build:** The high-pressure spray helps lower pool temperatures by 5-10°F. Constructed from high-strength, UV-resistant materials with an IP68 waterproof rating for long-lasting performance.

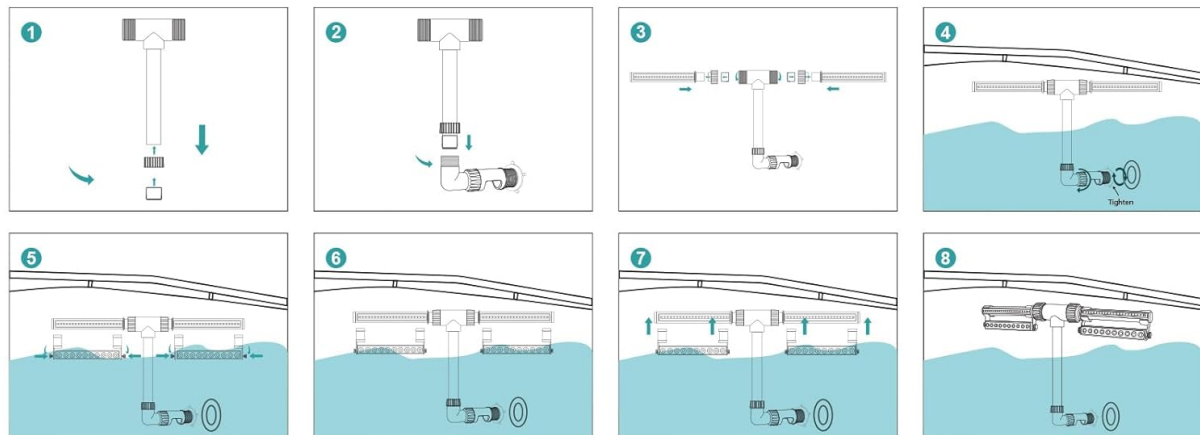
SETUP INSTRUCTIONS

Follow these steps for a quick and easy installation of your LED Pool Fountain. Ensure your pool pump is turned off before beginning installation.

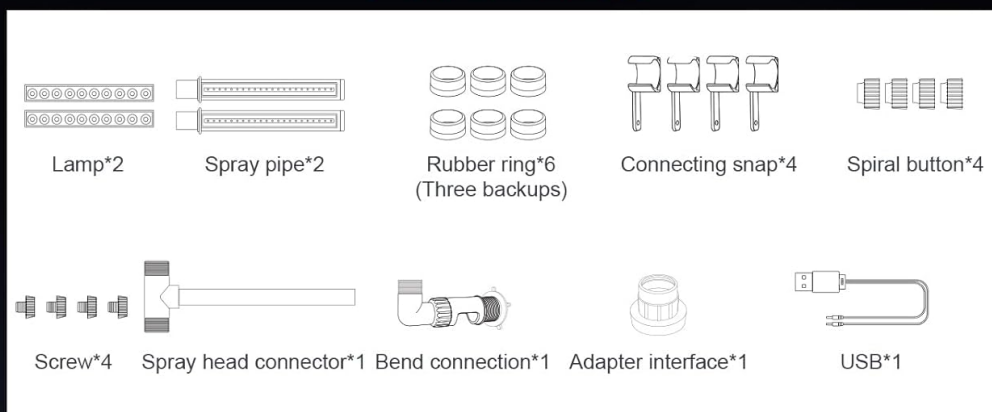
Parts List:

Component	Quantity
Lamp	2
Spray Pipe	2
Rubber Ring	6 (3 backups)
Connecting Snap	4
Spiral Button	4
Screw	4
Spray Head Connector	1
Bend Connection	1
Adapter Interface	1
USB Cable	1

Quick 5-Minute Installation



Parts List



NOTE: Drawings for illustration purpose only. May not reflect actual product. Not to scale.

Detailed diagram illustrating the 8-step installation process for the pool fountain.

Installation Steps:

1. **Prepare the Return Jet:** Ensure your pool pump is off. Locate your pool's return jet.
2. **Attach Adapter:** Select the appropriate adapter (1.73" or 3.2") for your return jet. Thread the adapter onto the return jet.
3. **Assemble Fountain Base:** Connect the bend connection and spray head connector to the main fountain pipe.
4. **Mount Fountain:** Attach the assembled fountain unit to the adapter on the return jet. Tighten securely.
5. **Install Spray Pipes:** Insert the spray pipes into the fountain unit.
6. **Attach Lamps:** Secure the LED lamp units to the spray pipes using the connecting snaps and spiral buttons. Ensure rubber rings are in place for a watertight seal.
7. **Position Fountain:** Adjust the fountain's position and angle as desired.
8. **Test:** Turn on your pool pump to check the water flow and fountain operation.



Fits for Most Inground and Above Ground Pools



The fountain is compatible with most inground and above-ground pools, fitting both 1.73" and 3.2" return jets.

OPERATING INSTRUCTIONS

Your LED Pool Fountain is controlled via a remote, allowing you to customize the lighting and set timers for convenience.

Full Control In Your Palm



20
Lighting Mode

4
Brightness Levels

4
Speed Levels Adjustable.

The remote control provides full command over lighting modes, brightness, and speed settings.

Remote Control Functions:

- **Power On/Off:** Press the power button to turn the lights on or off.
- **Light Modes:** Cycle through 20 dynamic light modes, including 7 core colors and various color-changing sequences.
- **Brightness Adjustment:** Select from 4 brightness levels (25%, 50%, 75%, 100%) to suit your preference.
- **Speed Control:** Adjust the speed of dynamic light modes with 4 available settings.
- **Timer Settings:** Set the lights to automatically turn off after 2 hours, 4 hours, or 6 hours.

Ensure the remote control has a clear line of sight to the fountain's light receiver for optimal performance. Replace the remote battery when necessary.

MAINTENANCE

Proper maintenance ensures the longevity and optimal performance of your LED Pool Fountain.

Charging the Light Pod:



The detachable light pod charges easily via USB, providing up to 12 hours of illumination.

- The light pod is detachable for convenient charging. Simply twist it off the fountain unit.
- Use the included USB cable to connect the light pod to a standard USB power adapter (not included).
- A full charge provides up to 12 hours of illumination. Charge as needed.

Cleaning and Storage:

- Regularly inspect the fountain for any debris or mineral buildup. Clean with a soft brush and mild pool-safe cleaner if necessary.
- Ensure all connections are secure and free from leaks.
- During off-season or extended periods of non-use, detach the fountain from the return jet, clean thoroughly, and store in a cool, dry place away from direct sunlight.
- The fountain has an IP68 waterproof rating, but proper care and storage will extend its lifespan.

TROUBLESHOOTING

If you encounter issues with your LED Pool Fountain, refer to the following common problems and solutions:

- **Fountain Not Spraying or Weak Spray:**

- Ensure your pool pump is running and providing adequate water pressure.
- Check for blockages in the spray pipes or fountain unit. Clean any debris.
- Verify that the fountain is securely attached to the return jet and there are no leaks at the connection points.

- **Lights Not Working:**

- Confirm the light pod is fully charged. Detach and recharge if necessary.
- Ensure the light pod is correctly attached to the fountain unit.
- Check the remote control battery. Replace if depleted.
- Ensure there are no obstructions between the remote and the light pod.

- **Remote Control Not Responding:**

- Replace the remote control battery.
- Point the remote directly at the light pod.
- Ensure you are within the effective range of the remote.

SPECIFICATIONS

Feature	Detail
Brand	BITIWEND
Model Number	Pool Fountain
Color	White
Product Dimensions (L x W x H)	5.04" x 3.66" x 14.06"
Power Source	Corded Electric (for charging)
Special Feature	Weather Resistant, Detachable Rechargeable Light Pod, Remote Control
Light Modes	20 Dynamic Modes, 7 Core Colors
Brightness Levels	4 (25%, 50%, 75%, 100%)
Speed Options	4
Timer Settings	2H/4H/6H Auto-Off
Battery Life (Light Pod)	Up to 12 hours on a single charge
Compatibility	Fits 1.73" & 3.2" threaded return jets (Inground & Above Ground Pools)
Waterproof Rating	IP68

WARRANTY INFORMATION

Specific warranty details for the BITIWEND LED Pool Fountain are not provided in this manual. For information regarding product warranty, please refer to the product packaging, the retailer's website, or contact BITIWEND customer support directly.

CUSTOMER SUPPORT

If you have any questions, require assistance with installation, or need further troubleshooting, please contact BITIWEND customer support through the retailer where the product was purchased or visit the official BITIWEND website for contact information.

For additional resources and product information, you may visit the [BITIWEND Store on Amazon](#).