

GMKtec G3 Pro

GMKtec G3 Pro Mini PC User Manual

Model: G3 Pro

1. INTRODUCTION

This manual provides detailed instructions for the setup, operation, maintenance, and troubleshooting of your GMKtec G3 Pro Mini PC. Please read this guide thoroughly before using your device to ensure optimal performance and longevity.

The GMKtec G3 Pro is a compact desktop computer designed for various applications, including office work, business, multimedia, and online learning. It features an Intel Core i3-10110U processor, 16GB DDR4 RAM, and a 512GB PCIe M.2 SSD, offering efficient performance in a small form factor.

2. WHAT'S IN THE BOX

Verify that all items are present in the package:

- GMKtec Nucbox G3 Pro Mini PC (16GB RAM, 512GB SSD)
- HDMI Cable
- Power Adapter
- User Manual
- VESA Mount with Screws

Retail Boxed Packaging

1. Nucbox G3 Pro Mini PC
2. Power Adapter & Cable
3. User Manual
4. HDMI Cable
5. VESA Mount with Screws



Image: Contents of the GMKtec G3 Pro Mini PC retail packaging, including the mini PC, power adapter, HDMI cable, VESA mount, and user manual.

3. PRODUCT OVERVIEW

The GMKtec G3 Pro Mini PC is designed for compact and efficient computing. It features a robust set of ports and internal components to support various tasks.

Front Panel

- **Power Button:** To turn the device on/off.

- **USB 3.2 x 2:** For connecting peripherals such as keyboards, mice, or external storage devices.

Rear Panel

- **HDMI (4K@60Hz) x 2:** For connecting to displays, supporting dual 4K output.
- **USB 3.2 x 2:** Additional ports for peripherals.
- **3.5mm Audio Jack:** For connecting headphones or external speakers.
- **Giga LAN (RJ45 2.5GbE):** For wired network connectivity.
- **DC IN:** Power input port.
- **Security Lock Slot:** For securing the device to a desk.

RICH INTERFACE



Monitor



TV



Audio



Display



NAS



Printer



Projector

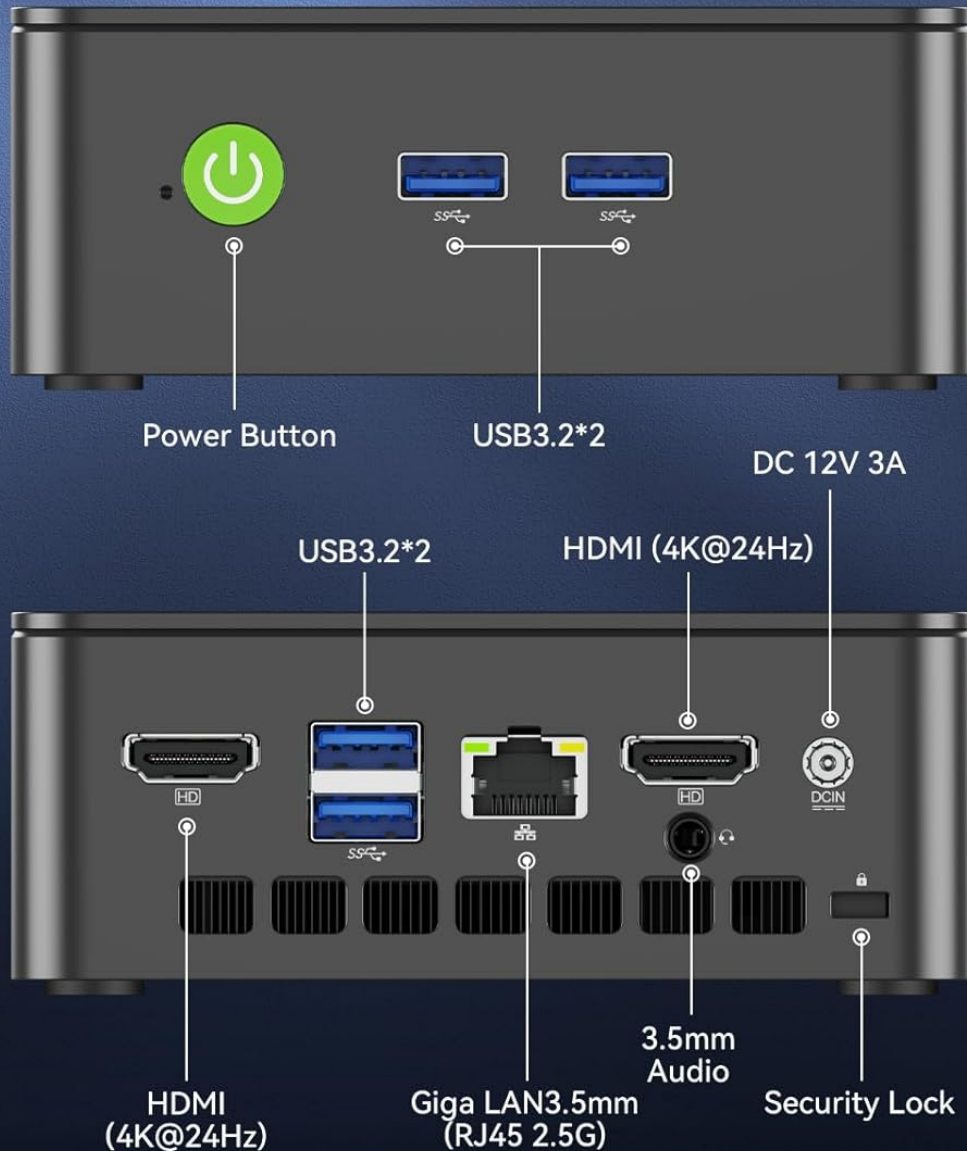


Image: Diagram illustrating the various ports and interfaces on the front and rear panels of the GMKtec G3 Pro Mini PC.

Internal Components

- **Dual DDR4 RAM Slots:** Supports up to 64GB RAM.
- **M.2 2280 PCIe Gen3*4 Slot:** For NVMe SSDs, supporting up to 8TB.
- **M.2 2242 SATA3.0 Slot:** For SATA SSDs, supporting up to 1TB.
- **Cooling Fan & Vents:** Integrated cooling system to maintain optimal operating temperatures.

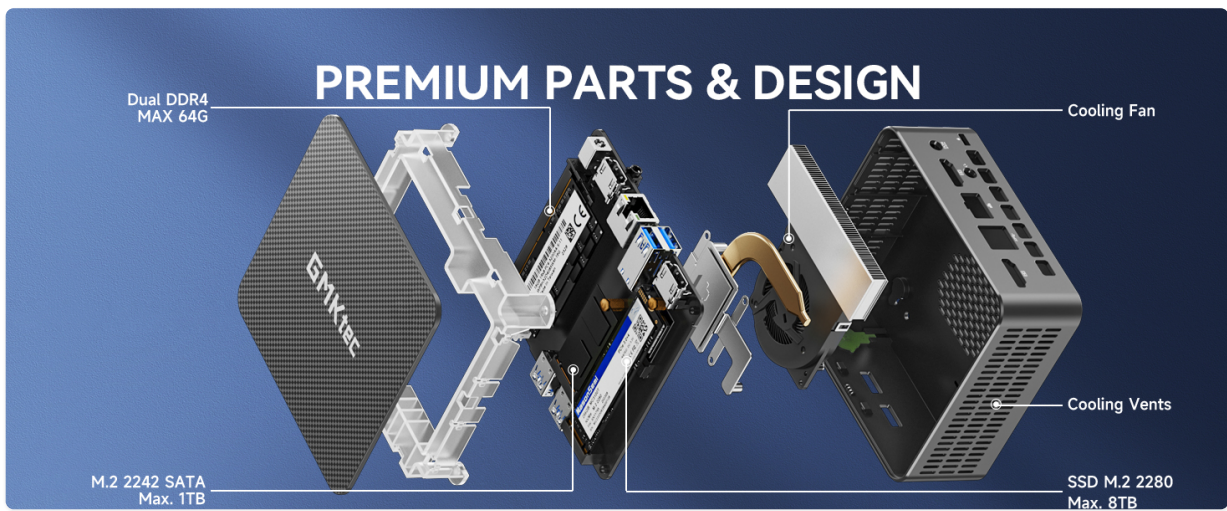


Image: Exploded view showing the internal components of the GMKtec G3 Pro Mini PC, including RAM, SSD slots, and cooling fan.

4. SETUP GUIDE

Follow these steps for initial setup:

1. **Connect Peripherals:** Connect your keyboard, mouse, and any other necessary USB devices to the available USB 3.2 ports.
2. **Connect Display:** Use an HDMI cable to connect your monitor(s) to the HDMI ports on the rear panel. The device supports dual 4K@60Hz displays.
3. **Connect Power:** Plug the power adapter into the DC IN port on the mini PC, then plug the adapter into a power outlet.
4. **Power On:** Press the power button on the front panel to turn on the mini PC.
5. **Initial Operating System Setup:** Follow the on-screen instructions to complete the Windows 11 Pro setup.
6. **Network Connection:** For faster setup, avoid connecting to a wired LAN initially. Connecting LAN might trigger long updates, delaying desktop access. Connect to Wi-Fi 6 or connect to the 2.5GbE LAN port after initial setup is complete.

DUAL SCREEN HUD DISPLAY

Enjoy 4K@24Hz Ultra HD Entertainment



HDMI 2.0 x2



Image: The GMKtec G3 Pro Mini PC connected to two external monitors, demonstrating its dual display capability.

5. OPERATING INSTRUCTIONS

Power On/Off

- **To Power On:** Press the power button once.
- **To Power Off:** From the operating system, select 'Shut down'. Alternatively, press and hold the power button for 5 seconds to force a shutdown (use only when necessary).

BIOS Settings and Performance Modes

The GMKtec G3 Pro supports different performance modes that can be adjusted via the BIOS settings to optimize for quiet operation, normal use, or maximum performance.

- **Accessing BIOS:** Press the 'Esc' key repeatedly during startup to enter the BIOS page.
- **Adjusting Modes:** Navigate to the BIOS Setup and select your desired mode (Quiet Mode, Normal Mode, Performance Mode) based on your usage scenario.

3 Modes Adjustment

Can be adjusted according to different usage scenarios to provide the best usage experience. quieter! Faster!



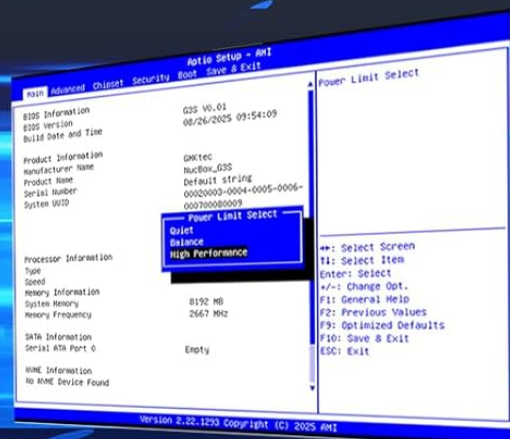
Quiet Mode



Normal Mode(Default)



Performance Mode



Press Esc to enter the BIOS page and select BIOS Setup to switch modes

Image: Illustration of the three adjustable modes (Quiet, Normal, Performance) for the GMKtec G3 Pro Mini PC, with instructions to access BIOS for adjustment.

6. STORAGE EXPANSION

The GMKtec G3 Pro offers flexible storage expansion options:

- **M.2 2280 NVMe PCIe Slot:** Supports high-speed NVMe SSDs up to 8TB for primary storage or additional high-performance storage.
- **M.2 2242 SATA Slot:** Supports SATA SSDs up to 1TB for additional storage capacity.

To install or upgrade storage, refer to the detailed instructions in the full user manual or consult a qualified technician.

7. CONNECTIVITY

The Mini PC provides comprehensive connectivity options:

- **Wi-Fi 6 (802.11ax):** Offers high-speed wireless internet access up to 600Mbps.
- **Bluetooth 5.2:** For connecting wireless devices such as keyboards, mice, and headphones.
- **2.5GbE Ethernet (RJ45):** Provides ultra-fast wired network speeds, up to 2.5 times faster than standard Gigabit Ethernet.



Image: Visual representation of the GMKtec G3 Pro Mini PC's connectivity, highlighting Built-in Dual Band WiFi 6, RJ45 2500Mbps LAN, and Bluetooth 5.2.

8. DUAL DISPLAY SETUP

The GMKtec G3 Pro supports connecting two 4K@60Hz displays simultaneously via its two HDMI 2.0 ports. This allows for an extended desktop experience, enhancing productivity for multitasking, content creation, or entertainment.

Simply connect two monitors using HDMI cables to the respective ports on the rear of the mini PC. The operating system will automatically detect the displays, and you can configure their arrangement and resolution through the display settings.



Image: The GMKtec G3 Pro Mini PC connected to two displays, showcasing its ability to provide a dual 4K Ultra HD entertainment experience.

9. COOLING SYSTEM

The GMKtec G3 Pro is equipped with a smart quiet cooling fan and strategically placed cooling vents to ensure efficient heat dissipation. This design allows for ultra-quiet operation, typically below 38dB, even under load, providing a comfortable working environment.



Image: A visual highlighting the smart quiet cooling fan of the GMKtec G3 Pro Mini PC, emphasizing its ultra-quiet operation for a disturbance-free experience.

10. SPECIFICATIONS

Feature	Specification
Brand	GMKtec
Model Name	G3 Pro
Operating System	Windows 11 Pro
CPU Model	Intel Core i3-10110U
CPU Speed	Up to 4.1 GHz

Graphics Coprocessor	Intel UHD Graphics 1200MHz
RAM Memory Installed	16 GB DDR4 (Dual Channel)
RAM Memory Maximum Size	64 GB
Hard Disk Description	512 GB M.2 2280 PCIe Gen3*2 + 1*M.2 2242 SATA
Connectivity Technology	Bluetooth 5.2, WiFi 6, Ethernet (2.5GbE), HDMI (4K@60Hz)
Video Output	HDMI x 2
Display Resolution Maximum	4096 × 2160 Pixels
Total USB Ports	4 (USB 3.2)
Power Consumption	6 Watts (typical)
Special Features	Wake On LAN, PXE Boot, RTC Wake, Auto Power On

11. MAINTENANCE

To ensure the longevity and optimal performance of your GMKtec G3 Pro Mini PC, consider the following maintenance tips:

- **Keep Clean:** Regularly clean the exterior of the mini PC with a soft, dry cloth. Ensure cooling vents are free from dust and obstructions.
- **Software Updates:** Keep your operating system and drivers updated to the latest versions for security and performance improvements.
- **Proper Shutdown:** Always shut down the mini PC properly through the operating system to prevent data corruption.
- **Environmental Conditions:** Operate the mini PC in a well-ventilated area, away from direct sunlight, excessive heat, and moisture.

12. TROUBLESHOOTING

If you encounter issues with your GMKtec G3 Pro Mini PC, try the following basic troubleshooting steps:

- **No Power:** Ensure the power adapter is securely connected to both the mini PC and a working power outlet. Try a different outlet if necessary.
- **No Display:** Verify that the HDMI cables are securely connected to both the mini PC and the monitor(s). Ensure monitors are powered on and set to the correct input source.
- **No Internet Connection:** For Wi-Fi, check your router and network settings. For wired Ethernet, ensure the cable is properly connected and the network adapter is enabled in the operating system.
- **Slow Performance:** Close unnecessary applications, check for background processes, and ensure sufficient free storage space. Consider adjusting performance modes in BIOS.
- **Peripheral Issues:** Try connecting USB devices to different ports. Ensure drivers are installed correctly for specialized peripherals.

For more complex issues, refer to the comprehensive troubleshooting section in the full user manual or contact customer support.

13. WARRANTY AND SUPPORT

Your GMKtec G3 Pro Mini PC comes with a **1-year limited warranty** from the date of purchase, covering defects due to design and workmanship.

For any questions, technical assistance, or warranty claims, please utilize the following support channels:

- **Email Support:** Contact the professional after-sales team at support@gmktec.com.
- **Online Support:** Visit the GMKtec store on Amazon or the official GMKtec website for FAQs and additional resources.
- **24/7 Client Support:** Dedicated support is available to assist you with your needs.