



[Manuals.plus](#) /

> [VEVOR](#) /

> VEVOR Drain Cleaner Machine (Model JR-510DZ) User Manual

## VEVOR JR-510DZ

# VEVOR Drain Cleaner Machine (Model JR-510DZ) User Manual

100 FT x 1/2 Inch Auto-Feed Sewer Snake Auger

## 1. INTRODUCTION

---

Thank you for choosing the VEVOR Drain Cleaner Machine, Model JR-510DZ. This powerful and portable drain cleaning machine is designed for efficient removal of stubborn blockages in pipes ranging from 2 to 6 inches in diameter. Featuring a 100 FT x 1/2 inch solid core steel cable and an auto-feeding system, it simplifies the task of maintaining clear drainage systems. This manual provides essential information for safe operation, proper setup, effective use, and routine maintenance of your drain cleaner.



Image: The VEVOR Drain Cleaner Machine (Model JR-510DZ) with its included accessories, showcasing its robust design and components.

## 2. SAFETY INSTRUCTIONS

---

**WARNING:** Read and understand all safety warnings and instructions before operating this machine. Failure to follow these instructions may result in electric shock, fire, and/or serious injury.

- **Personal Protective Equipment (PPE):** Always wear safety glasses, heavy-duty gloves, and appropriate work attire. Do not wear loose clothing or jewelry that could get caught in rotating parts.
- **Electrical Safety:** Ensure the machine is properly grounded. Do not operate in wet conditions or near standing water. Keep all electrical connections dry. Disconnect power before performing any maintenance, adjustments, or changing accessories.
- **Work Area:** Keep the work area clean and well-lit. Do not operate in explosive atmospheres, such as in the presence of flammable liquids, gases, or dust. Keep bystanders and children away.

- **Machine Stability:** Always operate the machine on a stable, level surface. Ensure the wheels are locked or the machine is otherwise secured to prevent movement during operation.
- **Cable Handling:** Never allow the cable to kink or twist. Keep hands clear of the rotating cable and drum. Maintain a firm grip on the cable as it enters and exits the pipe.
- **Proper Use:** Use the correct cutter for the type of clog. Do not force the cable; allow the machine to do the work. If the cable binds, immediately release the foot switch.
- **Maintenance:** Regularly inspect the machine, cable, and cutters for damage or wear. Replace worn parts immediately.

### 3. PRODUCT OVERVIEW AND COMPONENTS

---

The VEVOR Drain Cleaner Machine is equipped with features designed for effective and user-friendly operation.

#### Key Features:

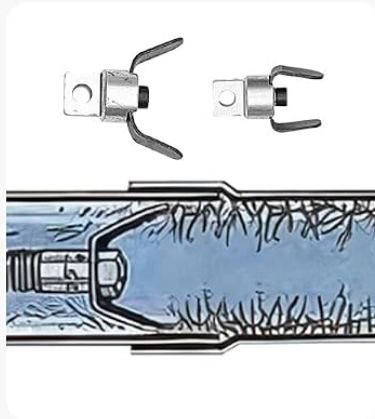
- **Efficient Clog Clearing:** 1700 RPM high-speed motor with auto-feeding system for effective blockage removal.
- **Premium Steel Core Cable:** 100 ft x 1/2 inch solid core steel cable resists breakage, twisting, and kinking, suitable for 2" - 6" pipes.
- **Adjustable Drum Angle:** Allows alignment with pipe entry for smoother cable feeding.
- **Telescopic Handle:** 2-level adjustable handle for ergonomic use, transport, and storage.
- **Enhanced Mobility:** Two 8-inch rubber wheels for movement and two 4-inch PU climbing wheels for stability on stairs.
- **Easy Operation:** CW/CCW control and air-activated foot switch for effortless cable management.
- **Versatile Cutters:** Includes 8 interchangeable cutters for various clog types.

#### Included Components:

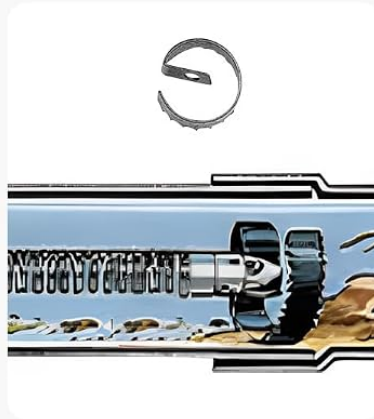
- 1 x Drain Cleaner Machine (Main Unit)
- 2 x Large Rubber Wheels (8-inch)
- 2 x PU Climbing Wheels (4-inch)
- 8 x Interchangeable Cutters (various types)
- 1 x Hex Wrench
- 1 x Pair of Gloves
- 1 x Drum-Angle Adjusting Handle

# 8 Interchangeable Cutters

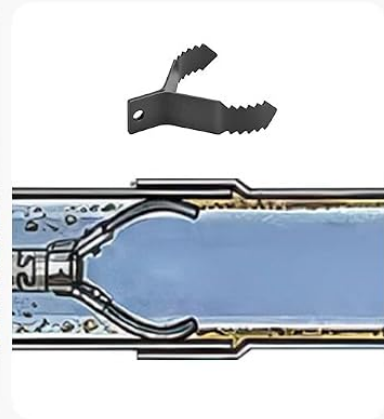
Blast through different stubborn clogs



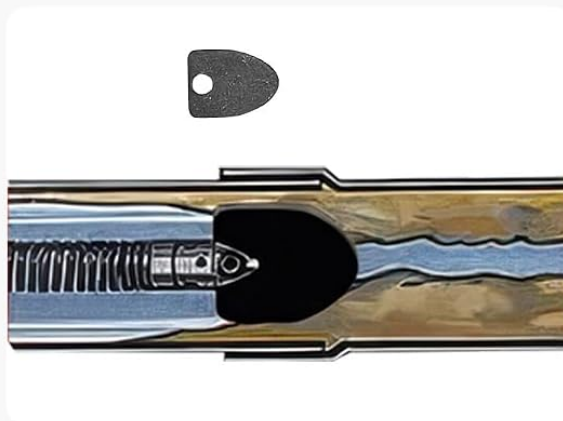
1 x C-Cutter  
1 x Arrow-Cutter



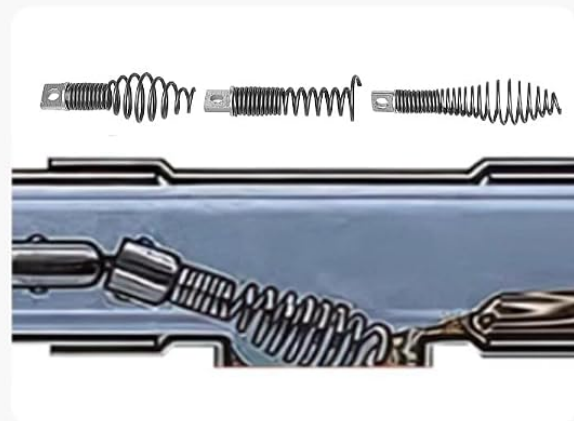
1 x Spiral  
Sawtooth Cutter



1x Expanding  
Finish Cutter



1 x Spade Cutter



1 x Boring Bulb Cutter  
1 x Retrieving Auger  
1 x Funnel Auger

Image: A selection of the 8 interchangeable cutters included with the machine, designed to tackle various types of drain blockages.

## 4. SETUP

---

Before operating the drain cleaner, ensure all components are properly assembled and secured.

### 4.1 Assembly

1. **Attach Wheels:** Secure the two 8-inch large rubber wheels to the main frame. Then, attach the two 4-inch PU climbing wheels, ensuring they are firmly in place for stability.

2. **Install Telescopic Handle:** Insert the 2-level telescopic handle into its designated slots on the machine frame and secure it. Adjust to a comfortable height for transport and operation.
3. **Adjust Drum Angle:** Use the provided M10 wrench to loosen the fixing nut for the drum. Adjust the drum angle to align with the pipe entry point, then tighten the nut to secure the position.
4. **Select and Attach Cutter:** Choose the appropriate cutter for the type of clog you are addressing. Attach it securely to the end of the drain cable. Refer to the 'Versatile Cutters' section for guidance.



Image: The machine highlighting the adjustable drum angle and the telescopic handle, crucial for ergonomic setup and operation.

## 4.2 Pre-Operation Checklist

- Ensure all connections are secure and tight.
- Verify the power cord is in good condition and connected to a grounded outlet.
- Confirm the selected cutter is appropriate for the job and securely attached.
- Wear all recommended personal protective equipment.

### 4.3 Installation Guide Video



Video: This video provides a visual guide for the installation and initial setup of the VEVOR Drain Cleaner Machine.

## 5. OPERATION

---

Follow these steps for safe and effective drain cleaning.

### 5.1 Basic Operation Steps

1. **Position the Machine:** Place the drain cleaner near the drain opening, ensuring it is stable. Adjust the drum angle if necessary.
2. **Insert Cable:** Manually feed the cable into the drain opening until it reaches the blockage or a bend.
3. **Engage Auto-Feed:** Press the air-activated foot switch to start the motor. The auto-feed system will rotate the cable and drive it into the pipe. Use the CW/CCW control to manage cable direction.
4. **Clear Clog:** As the cable encounters the clog, allow the rotating cutter to break through the obstruction. Apply gentle pressure if needed, but avoid forcing the cable. If the cable binds, release the foot switch immediately.
5. **Retrieve Cable:** Once the clog is cleared, reverse the motor direction using the CW/CCW control and use the auto-feed to retract the cable from the pipe. Clean the cable as it is retrieved.
6. **Test Drain:** After removing the cable, run water down the drain to confirm the blockage is fully cleared.

# Efficient Power to Clear Tough Clogs with Ease

Auto-feed system blasts through stubborn clogs

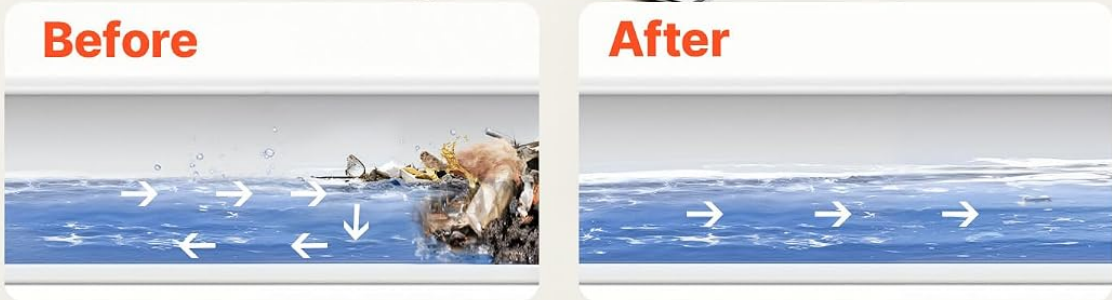


Image: A user demonstrating the operation of the VEVOR Drain Cleaner Machine to clear a floor drain, showing the before and after state of the pipe.

## 5.2 Operation Guide Video



Video: This video demonstrates the operational procedures for using the VEVOR Drain Cleaner Machine effectively.

## 5.3 General Product Overview Video



## 6. MAINTENANCE

---

Regular maintenance ensures the longevity and optimal performance of your drain cleaner.

- **Cable Cleaning:** After each use, clean the entire length of the cable to remove any debris, grease, or residue. This prevents corrosion and maintains cable flexibility.
- **Cutter Inspection:** Inspect all cutters for wear, damage, or dullness. Replace any worn or damaged cutters to ensure effective clog removal.
- **Machine Cleaning:** Wipe down the machine's exterior, drum, and auto-feed mechanism. Keep the motor and electrical components free from dirt and moisture.
- **Lubrication:** Periodically apply a light lubricant to moving parts of the auto-feed mechanism and the cable drum bearings as recommended by the manufacturer (if specified in a separate detailed manual).
- **Storage:** Store the drain cleaner in a dry, clean, and secure location, away from extreme temperatures and direct sunlight. Ensure the cable is properly coiled within the drum.

## 7. TROUBLESHOOTING

---

This section addresses common issues you might encounter during operation.

Problem	Possible Cause	Solution
Machine does not start.	No power, faulty foot switch, motor issue.	Check power connection and outlet. Inspect foot switch for damage. If issues persist, contact customer support.
Cable not feeding or retracting.	Auto-feed mechanism jammed, cable kinked, incorrect CW/CCW setting.	Ensure auto-feed lever is engaged. Check cable for kinks and straighten. Verify CW/CCW switch is in the correct position.
Cable gets stuck in pipe.	Severe clog, incorrect cutter, cable forced.	Do not force. Reverse motor direction to retract slightly, then try again. If still stuck, try a different cutter or consider professional help.
Cutter not effective.	Wrong cutter for clog type, dull cutter.	Ensure you are using the appropriate cutter for the blockage. Replace dull cutters.

## 8. SPECIFICATIONS

---

Detailed technical specifications for the VEVOR Drain Cleaner Machine, Model JR-510DZ.

Feature	Detail
Item Model Number	JR-510DZ
Cable Size	100 FT x 1/2 inch
Cable Type	Solid Steel Cable

<b>Feature</b>	<b>Detail</b>
Feeding Type	Auto Feed
Applicable Pipe Diameter	2 - 6 inch / $\Phi$ 50 - 150mm
Large Rubber Wheels	2pcs * 8 inch
PU Climbing Wheels	2pcs * 4 inch
Drum Angle	Adjustable
Telescopic Handle	2-Level Adjustable
Main Frame Material	Iron + Plastic + Rubber
Net Weight	113.7 lbs / 51.6 kg
Product Dimensions	21.3 x 24.4 x (24.8-36.6) inch / 540 x 620 x (630-930) mm



Item Model Number: **JR-510DZ**

Cable Size: **100FT x 1/2 inch**

Cable Type: **Solid Steel Cable**

Feeding Type: **Auto Feed**

Applicable Pipe Diameter:

**Φ2 - 6 inch / Φ50 - 150mm**

Large Rubber Wheels: **2pcs \* 8 inch**

PU Climbing Wheels: **2pcs \* 4 inch**

Drum Angle: **Adjustable**

Telescopic Handle: **2-Level Adjustable**

Main Frame Material: **Iron + Plastic + Rubber**

Net Weight: **113.7 lbs / 51.6 kg**

Product Dimensions: **21.3 × 24.4 x (24.8-36.6) inch / 540 × 620 x (630-930) mm**

Accessories

**8 x Interchangeable Cutters**

**1 x Hex Wrench**

**2 x PU Climbing Wheels**

**2 x Large Rubber Wheels**

**1 x Pair of Gloves**

**1 x Drum-Angle Adjusting Handle**

Image: A visual representation of the VEVOR Drain Cleaner Machine with key dimensions and a list of specifications and accessories.

## 9. WARRANTY AND SUPPORT

VEVOR is committed to providing high-quality products and customer satisfaction.

- **Returns:** This product is eligible for 30-day easy returns. Please refer to your purchase documentation for specific return policy details.
- **Customer Support:** For any questions, technical assistance, or warranty claims, please contact VEVOR

customer support. Contact information can typically be found on the VEVOR official website or your purchase receipt.