

## NIIMBOT B2 Pro

# NIIMBOT B2 Pro Label Maker Machine User Manual

Model: B2 Pro

## 1. INTRODUCTION

---

This manual provides instructions for the setup, operation, and maintenance of your NIIMBOT B2 Pro Label Maker Machine. Please read this manual thoroughly before using the device to ensure proper function and longevity.

## 2. PACKAGE CONTENTS

---

Verify that all items are present in the package:

- NIIMBOT B2 Pro Label Maker (x1)
- Type-C Cable (x1)
- 50x30mm White Label Tape (x1, pre-installed inside the machine)
- User Manual (x1)

# Package Includes



01 NIIMBOT B2 Pro Label Maker x1

02 Type-C Cable x1

03 50x30mm White Label Tape x1  
(inside the machine)

04 User Manual x1

Image: Contents of the NIIMBOT B2 Pro Label Maker package. It shows the label maker, a Type-C charging cable, a roll of 50x30mm white label tape, and the user manual.

## 3. DEVICE OVERVIEW

The NIIMBOT B2 Pro is a portable thermal label printer designed for various labeling needs. It features a 300dpi print head for clear output and supports both mobile and PC connectivity.

# Portable and Lightweight



Image: A close-up of the NIIMBOT B2 Pro label maker, highlighting its compact and ergonomic design. The device is shown in a hand, emphasizing its portability.

## Key Features:

- **Ultra-portable Design:** Weighs approximately 348g, with ergonomic curves for comfortable handling.
- **300dpi High-Definition Printing:** Ensures crisp and clear label output. Supports NIIMBOT grayscale photo paper labels and red-and-black dual-color printing.
- **One-key Smart Operation:** Allows independent operation for real-time, history, and preset template printing without a smartphone or PC after initial setup.
- **Multi-Point Bluetooth Connectivity:** Connects to mobile devices (iOS and Android) and PC (Windows). Supports simultaneous connection of up to 10 smartphones (3 iOS, 7 Android) for multi-user editing.
- **App Features:** Access to over 1500 icons, borders, 249 free fonts, and 100+ VIP exclusive fonts,

with over 1,000 design templates.

- **Wide Label Compatibility:** Supports label widths from 20mm to 50mm.

## 4. SETUP GUIDE

### 4.1 Charging the Device

Before first use, fully charge the NIIMBOT B2 Pro using the provided Type-C cable. The charging port is located on the device.

### 4.2 Installing the NIIMBOT App

1. Download the "NIIMBOT" app from your mobile device's app store (iOS or Android).
2. Alternatively, for PC (Windows), download the NIIMBOT software from the official website. (Note: Incompatible with iPad).

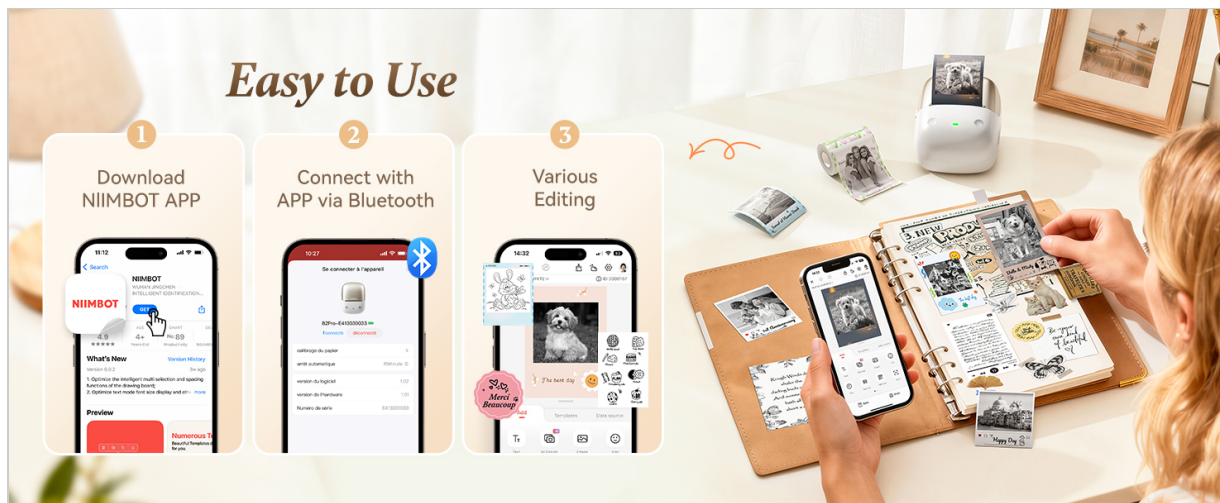


Image: A visual guide demonstrating the three easy steps to use the NIIMBOT B2 Pro: 1. Download the NIIMBOT APP, 2. Connect with the APP via Bluetooth, and 3. Begin various editing tasks.

### 4.3 Connecting to the Device

1. Ensure the NIIMBOT B2 Pro is powered on. The power button is typically located on the right side.
2. Open the NIIMBOT app on your smartphone or PC.
3. Follow the in-app instructions to connect to the printer via Bluetooth.

The device supports simultaneous connection with up to 10 smartphones (3 iOS and 7 Android).

# Spice up Your Albums and Scrapbooks with B2 Pro Label Maker!



Image: Illustration of the NIIMBOT B2 Pro's multi-point Bluetooth connectivity, showing it can connect to and be controlled by multiple smartphones simultaneously.

## 4.4 Loading Label Tape

The NIIMBOT B2 Pro features a shaftless design for easy label loading.

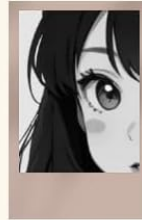
1. Open the label compartment cover.
2. Place the label roll into the compartment, ensuring the labels feed out correctly.
3. Close the cover. The printer will automatically detect the label size and type.

## • Multi-Point Bluetooth Connectivity

Allows editing from up to 10 connected terminals simultaneously



## 300 DPI High-Definition Printing •



Print Quality of NIIMBOT Grayscale Photo Label

VS



Print Quality of Regular Label

## • Automatic Label Rewinds

Do not waste the first label, ensure that each print job starts from the first label



## • Automatic Label Detection

Automatically recognizes the shape and size of the label paper



## Shaftless Design •



Ensures easy loading and minimal label jams

VS



## Spindle-Based Design

Label loading is cumbersome and prone to jam

Image: A detailed view of the NIIMBOT B2 Pro's internal mechanism, highlighting its shaftless design for easy label roll insertion and automatic label detection feature.

## 5. OPERATING INSTRUCTIONS

### 5.1 Using the NIIMBOT App

The NIIMBOT app provides extensive customization options for your labels.

- **Text Editing:** Double-tap a text box to enter content. Adjust font, size, style, and alignment.
- **Icons & Borders:** Choose from over 1500 icons and 100+ borders to enhance your labels.
- **Templates:** Utilize over 1,000 pre-designed templates for various scenarios (catering, office, retail, etc.).
- **Image Integration:** Import your own photos for personalized projects.

- **Multi-language Support:** The app supports multiple languages.

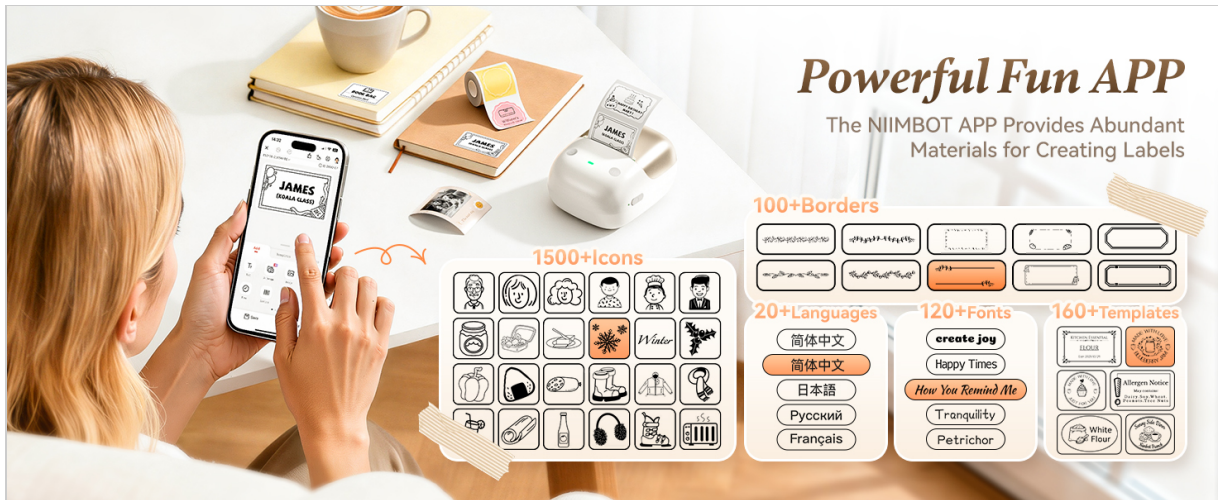


Image: A screenshot of the NIIMBOT app interface, showcasing its rich library of icons, borders, fonts, and templates available for label customization.

Your browser does not support the video tag.

Video: This video demonstrates how to customize label content using the NIIMBOT app, including text editing, adding images, and selecting various label styles. (Source: NiiMbot)

## 5.2 Printing Labels

After designing your label in the app, tap "Print" to send the job to the B2 Pro. The printer offers three fully configurable offline printing modes:

1. **Mode 1: Print Real-time:** For dynamic information such as expiration dates or material receiving times.
2. **Mode 2: Print Previous One:** Re-print a previously used label without re-editing.
3. **Mode 3: Designate "My Templates":** Print from your saved preset templates for standardized labeling.



Image: An array of different label styles and types that can be printed with the NIIMBOT B2 Pro, including red&black, photo style, round, and white labels.

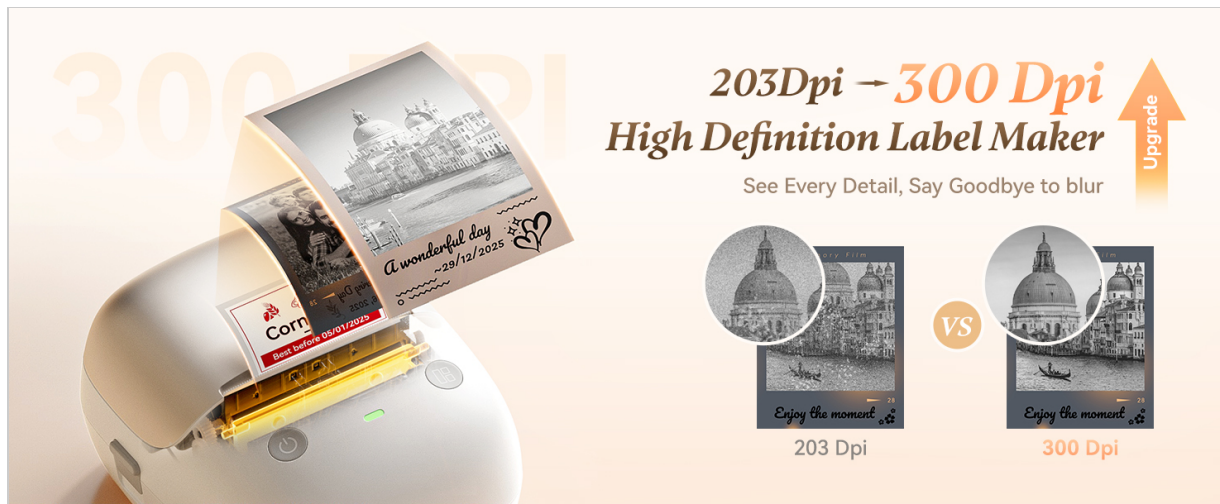


Image: A visual comparison highlighting the superior 300 DPI high-definition print quality of the NIIMBOT B2 Pro compared to a 203 DPI output, showing clearer details.



Image: This image illustrates the three fully configurable offline printing modes of the NIIMBOT B2 Pro: Print real-time, Print the previous one, and Designate "My Templates".

Your browser does not support the video tag.

Video: A demonstration of the NIIMBOT B2 Pro Smart Label Printer in use, showcasing its ease of printing and application in various settings. (Source: NiiMbot)

Your browser does not support the video tag.

Video: A step-by-step guide on how to use the NIIMBOT B2 Pro label printer, covering app usage and printing process. (Source: NiiMbot)

## 6. TROUBLESHOOTING

### 6.1 "Printer connection failed" with Android phone

If you encounter this issue, follow these steps:

1. Update the printer's Bluetooth firmware via an iOS device or PC cloud printing.
2. After the update, double-press the printer's power button to print a self-test page.
3. Verify that the Bluetooth version on the self-test page has changed to 7470.

If issues persist, contact customer support for assistance.

## 7. SPECIFICATIONS

Feature	Detail
Brand	NIIMBOT
Model Name	B2 Pro
Connectivity Technology	Bluetooth
Printing Technology	Thermal
Special Feature	Bluetooth, Inkless Printing, Portable
Printer Output	Monochrome
Max Print Speed Monochrome	40 mm/s
Item Weight	12 ounces (approx. 340g)
Product Dimensions (D x W x H)	5" x 2.6" x 3.6"
Print Media	Labels
Resolution	300 x 300 DPI
Maximum Media Size	2x14 Inch
Paper Size (Example)	2x1.2 Inch
Dual-sided printing	No (Simplex)

	B2	B2 Pro
<b>B2 VS B2 Pro</b> Compare the Parameters		
Print Resolution	203DPI	300DPI
Print Speed	Max 40mm/s	Max 40mm/s
Grayscale Printing	✗	✓
Red and Black Dual-Color Printing	✗	✓
Print Width	0.8"-2"	0.8"-2"
Print Height	0.3"-13.8"	0.3"-13.8"
Compatible with Mobile and PC	✓	✓
Battery Capacity	1500mAh	1500mAh
Charging Type	Type-C	Type-C
Bluetooth Multi-Connection	3 iOS + 7 Android	3 iOS + 7 Android

Image: A comparison table detailing the differences between the NIIMBOT B2 and B2 Pro models, specifically noting the B2 Pro's 300 DPI resolution and grayscale/red-and-black dual-color printing capabilities.

## 8. WARRANTY AND SUPPORT

### 8.1 Warranty Information

The NIIMBOT B2 Pro Label Maker Machine comes with a **a2-Year Warranty** from the manufacturer.

### 8.2 Customer Support

For any issues or inquiries not covered in this manual, please contact NIIMBOT customer support. Refer to the product packaging or official NIIMBOT website for contact details.