

## Mitlvge 70ET Fireproof Safe

# Mitlvge 70ET Fireproof Safe User Manual

Model: 70ET Fireproof Safe

## 1. INTRODUCTION

---

This manual provides essential instructions for the safe and effective use of your Mitlvge 70ET Fireproof Safe. Please read this manual thoroughly before installation and operation, and retain it for future reference. This safe is designed to protect your valuables, documents, and other important items from fire and unauthorized access.

## 2. SAFETY INFORMATION

---

- **Do not store emergency keys or the external battery box inside the safe.** These items are crucial for opening the safe if the digital keypad fails or batteries run out.
- Ensure the safe is placed on a stable, level surface to prevent tipping.
- Keep the safe away from excessive moisture or direct sunlight.
- This safe is heavy. Exercise caution and seek assistance when moving or installing to prevent injury.
- Keep children away from the safe and do not allow them to play with the keypad or keys.

## 3. WHAT'S IN THE BOX

---

Carefully unpack your safe and ensure all components are present:

- Mitlvge 70ET Fireproof Safe (x1)
- Emergency Keys (x2)
- External Emergency Battery Box (x1)
- Instruction Manual (x1)



Image: Contents of the safe packaging, showing the safe, emergency keys, external battery box, and manual.

## 4. PRODUCT FEATURES

- **35-Minute Fire Protection:** Certified to withstand 1700°F (927°C) for 35 minutes, protecting contents from extreme heat.
- **Spacious Interior:** 7.4 cubic feet capacity with interior dimensions of 15.6"W × 11.7"D × 26.52"H.
- **Adjustable Storage:** Includes 3 removable shelves for flexible organization of various items.
- **Robust Construction:** Built from high-strength alloy steel with a scratch- and corrosion-resistant finish.
- **Enhanced Security:** Features 7 solid 0.98" locking bolts and concealed anti-pry hinges to resist forced entry.
- **Multiple Access Methods:** Unlock using the programmable digital keypad, 2 backup keys, or the external battery box for emergency power.
- **Smart Alarm System:** Triggers an alarm and temporary lockout after multiple incorrect entries.
- **Silent Mode:** Activate with \*633 for discreet keypad operation.
- **Thoughtful Interior:** Soft felt lining protects valuables from scratches, and a built-in LED light improves visibility in low-light conditions.
- **Key Replacement:** Unique key serial numbers are provided for easy replacement if keys are lost.

# UL 72 STANDARD Fireproof for 35min up to 1700°F



Image: Illustration of the safe's fire protection capabilities, maintaining a low internal temperature during a 1700°F external fire.

# Multi-Layer Fireproof Protection Structure

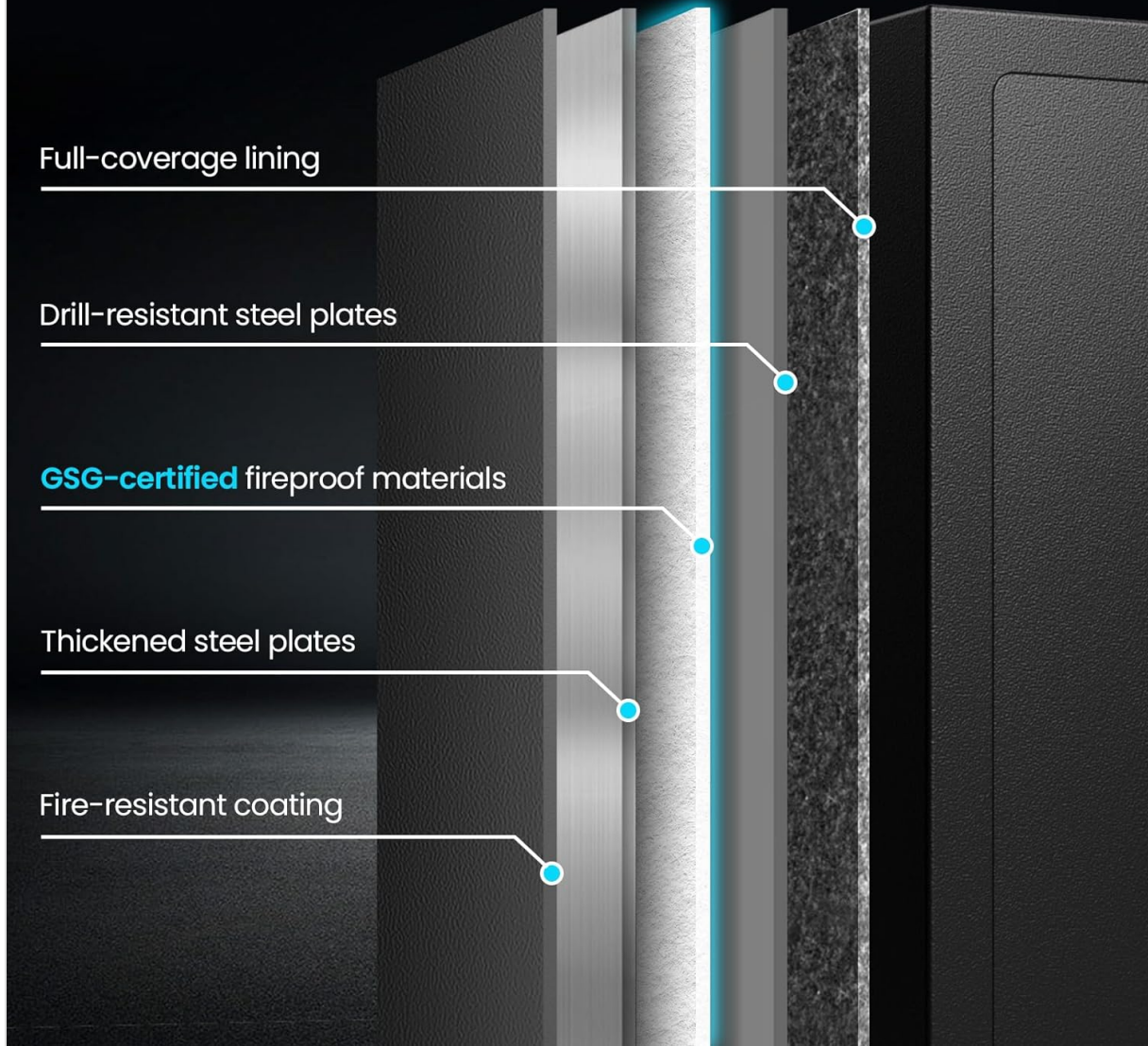


Image: Cross-section view illustrating the multi-layer construction for fire and theft protection.










<p><b>Power</b></p> <p> 4 AA Batteries(not included)</p> <p><b>Weight</b></p> <p> <b>64 lbs</b></p>	<p><b>Special Feature</b></p> <p> Alarm System</p> <p> Combination Lock</p> <p> Fireproof</p>	<p> Removable Shelves</p> <p> Sensor Light</p>
---------------------------------------------------------------------------------------------------------------------------------------------------------------------------------------------------------------------------------------------------------------------------	--------------------------------------------------------------------------------------------------------------------------------------------------------------------------------------------------------------------------------------------------------------------------------------------------------------------------------------------------------	--------------------------------------------------------------------------------------------------------------------------------------------------------------------------------------------------------------------------

Image: Detailed dimensions and key features of the safe.

## 5. SETUP

### 5.1 Battery Installation

The safe requires 4 AA batteries (not included) for the digital keypad. Locate the battery compartment, typically on the inside of the door. Insert the batteries according to the polarity markings.

### 5.2 First-Time Opening

For the first use, you will need to open the safe using the emergency keys. Insert one of the emergency keys into the keyhole, turn it 90 degrees clockwise, and then turn the handle to open the door. Once open, you can install the batteries and set your personal code.

### 5.3 Placement

Choose a secure and stable location for your safe. The safe is designed without pre-drilled mounting holes to maximize its fireproof performance. This means it cannot be bolted down, so choose a location that minimizes the risk of theft by removal.

## 6. OPERATING INSTRUCTIONS

## 6.1 Opening the Safe

Your safe offers three methods for opening:

1. **Using the Digital Keypad:** Enter your personal code (or master code), then turn the knob clockwise to open the door.
2. **Using Emergency Keys:** Insert an emergency key into the keyhole, turn it 90 degrees clockwise, then turn the knob to open the door.
3. **Using External Battery Box (Emergency Power):** If the internal batteries are depleted, connect the external battery box to the port on the keypad. Enter your personal code, then turn the knob to open the door.



Image: Visual guide to the three methods of opening the safe.

## 6.2 Setting/Changing Your Passcode

Refer to the detailed instructions provided in the physical instruction manual for specific steps on how to set or change your personal passcode. This typically involves pressing a reset button inside the safe (with the door open) and then entering your new code on the keypad.

# EASY USE COMBINATION LOCK SAFE

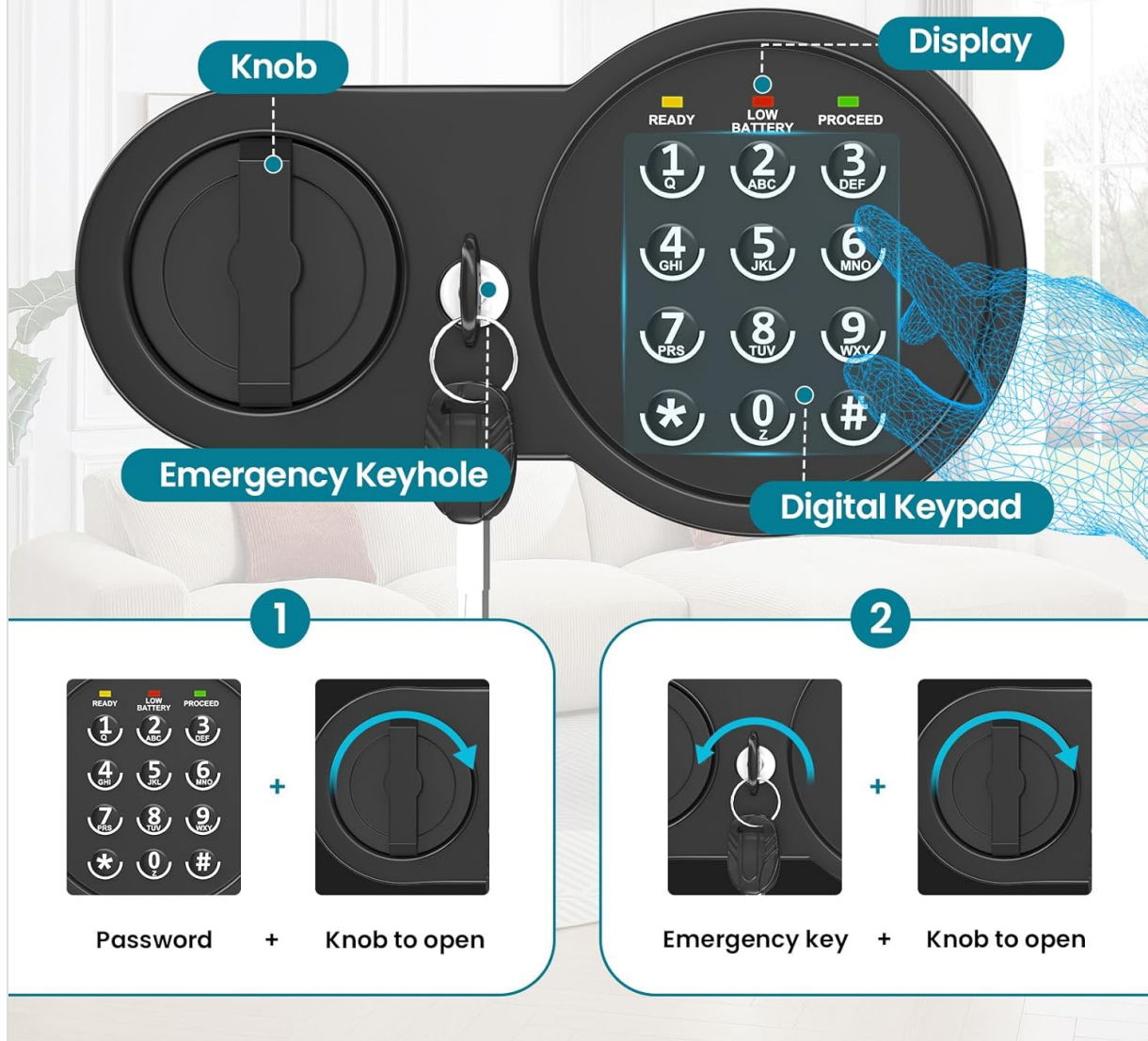


Image: Detailed view of the digital keypad and opening mechanisms.

## 6.3 Silent Mode

To disable keypad sounds for discreet access:

- **Activate Silent Mode:** Press **\*633** on the keypad.
- **Deactivate Silent Mode:** Press **\*66** on the keypad.

Your browser does not support the video tag.

Video: Demonstration of the safe's silent mode feature, showing how to activate and deactivate it for quiet operation.



Image: Visual explanation of Silent Mode and the integrated LED light.

## 6.4 Alarm System

The safe is equipped with an alarm system to deter unauthorized access:

- **Incorrect Entry Alarm:** If an incorrect code is entered three times consecutively, the keypad will lock for 30 seconds, and an alarm will sound.
- **Vibration Alert:** The safe can detect vibrations. If enabled, a strong vibration will trigger an alarm.
- **Activate Vibration Alert:** Press **\*00** on the keypad.
- **Deactivate Vibration Alert:** Press **\*99** on the keypad.

# ALARM SYSTEM & SILENT MODE



Image: Overview of the alarm system and silent mode functionality.

## 6.5 Adjustable Shelves

The safe includes three removable shelves that can be adjusted or removed to accommodate items of various sizes. To adjust, simply lift the shelf and reposition it on the desired support brackets. Ensure shelves are securely seated before placing items on them.

# 3 REMOVABLE SHELVES

Versatile interior organization



Image: Interior view of the safe highlighting the three removable shelves.



Image: Examples of different shelf configurations for optimal storage.

## 7. MAINTENANCE

### 7.1 Battery Replacement

When the low battery indicator illuminates on the keypad, replace the 4 AA batteries promptly. Use only new, high-quality alkaline batteries. Refer to section 5.1 for battery installation instructions.

## Silent Mode and LED Light



To avoid disturbing others, you can enable Silent Mode to disable the keypad sounds.



The built-in LED light allows you to see clearly even in the dark.



Image: Illustration of the low battery alert and the external battery box for emergency power.

## 7.2 Cleaning

Clean the exterior of the safe with a soft, damp cloth. Avoid using abrasive cleaners or solvents that could damage the finish. The interior felt lining can be gently vacuumed or wiped with a dry cloth.

## 8. TROUBLESHOOTING

- **Safe will not open with passcode:** Check if the batteries are low and replace them if necessary. Use the external battery box or emergency keys as an alternative.
- **Keypad is unresponsive:** The keypad may be temporarily locked after three incorrect code entries. Wait 30 seconds for it to reset.
- **Alarm sounds unexpectedly:** Check if the vibration alert is enabled (\*00) and if the safe has been disturbed. Deactivate if not needed (\*99).
- **Lost emergency keys:** Contact customer support with your unique key serial number for assistance with replacement.

## 9. SPECIFICATIONS

Brand	Mitlvge
Model Number	70ET Fireproof Safe
Product Dimensions (D x W x H)	14" x 16.4" x 27.3"
Interior Dimensions (W x D x H)	15.6" x 11.7" x 26.52"
Capacity	7.4 Cubic Feet
Item Weight	64 Pounds
Material	Alloy Steel
Lock Type	Electronic Combination Lock, Key
Fire Protection	35 minutes at 1700°F (927°C)

### Special Features

Fireproof, 3-Removable Shelf, Low battery indicator, Built-in LED Light, Anti-theft Alarm, Silent Mode

## 10. WARRANTY AND SUPPORT

Mitlve is committed to providing reliable products and excellent customer service.

- **Lifetime Technical Support:** We offer lifetime technical support with a 24-hour response time for any inquiries or issues you may encounter.
- **Key Replacement Service:** In case of lost keys, please contact our support team with your unique key serial number for assistance with replacements.
- **Lifetime Fire Replacement:** In the unfortunate event of a fire, submit incident information to receive a free replacement safe.



Image: Information regarding the lifetime fire replacement policy.

## Never Run Out of Power



**Low Battery Alerts Keep  
Your Safe Operational**

*A hidden port lets you recharge and  
open the safe if the battery runs out.*



Image: Overview of comprehensive protection and support services.