

OTIC BS-3514SA

OTIC Dual System Bluetooth Wallet Tracker User Manual

Model: BS-3514SA

1. INTRODUCTION

The OTIC Dual System Bluetooth Wallet Tracker (Model: BS-3514SA) is an ultra-slim device designed to help you locate your valuables. It offers seamless compatibility with both Apple Find My (iOS) and Google Find Hub (Android) networks, providing versatile tracking capabilities. This tracker is rechargeable, waterproof, and features a loud sound alert to assist in finding misplaced items.

2. SAFETY INFORMATION

- Do not attempt to disassemble, repair, or modify the device. This may void the warranty and pose safety risks.
- Keep the device away from extreme temperatures and direct sunlight.
- Ensure the device is fully charged before initial use to optimize battery performance.
- To maintain compliance with FCC's RF exposure guidelines, a distance of at least 20 cm (approximately 8 inches) must be maintained between the tracker and your body during operation.

3. PACKAGE CONTENTS

- OTIC Dual System Bluetooth Wallet Tracker (Model: BS-3514SA)
- User Manual

4. PRODUCT OVERVIEW

The OTIC Wallet Tracker is designed to be as thin as a credit card, making it ideal for wallets, luggage, keys, and bags. It features a power button, a power indicator light, and a wireless charging receiver.

Help you find your items

Global Positioning-Through the vast encrypted search networks of Google and Apple



Image: The OTIC Dual System Bluetooth Wallet Tracker, a slim black card-shaped device.

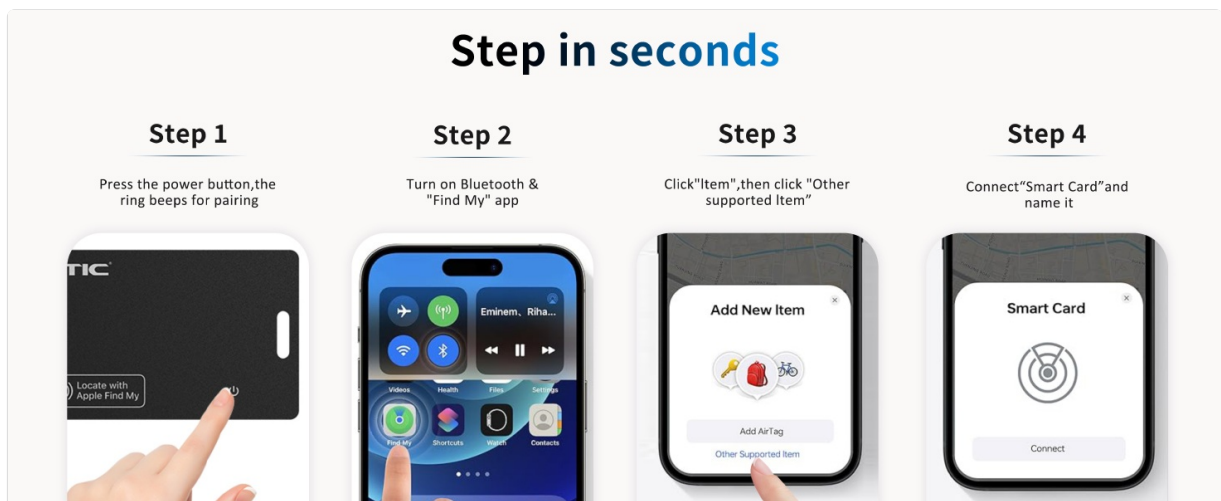


Image: Diagram showing the ultra-thin profile and dimensions of the OTIC tracker, highlighting its portability.

5. SETUP

5.1 Initial Charge

Before first use, fully charge your OTIC Wallet Tracker. The device features a built-in wireless charging

chip. Place the tracker on a compatible wireless charging pad with its back facing the charging surface. The power indicator lights will turn orange and green during charging, and then solid green when fully charged. A full charge provides up to 10 months of battery life.



Image: The OTIC tracker being charged wirelessly on a charging pad. An orange light indicates charging.

5.2 Pairing with Apple Find My (iOS)

1. Press the power button on the tracker. The tracker will beep to indicate it is ready for pairing.
2. Ensure Bluetooth is enabled on your iOS device.
3. Open the Apple Find My app.
4. Tap on the 'Items' tab, then select 'Add New Item', and choose 'Other Supported Item'.
5. Follow the on-screen prompts to connect the 'Smart Card' and name it.



Image: A visual guide showing four steps to connect the OTIC tracker to an iPhone using the Apple Find My app.

5.3 Pairing with Google Find Hub (Android)

1. Long press the power button on the tracker. The tracker will beep for pairing.
2. Ensure Bluetooth is enabled on your Android device.
3. Open the Google Find Hub app.
4. Tap 'Connect' and agree to the terms. The OTIC Smart Card will appear on devices linked with your account.
5. Select 'Open app' to connect the Find Card Wireless and complete the setup.

Android Connection Methods



Image: A visual guide showing four steps to connect the OTIC tracker to an Android phone using the Google Find Hub app.

Note: The tracker cannot be paired with iOS and Android devices simultaneously.

6. OPERATING INSTRUCTIONS

6.1 Locating Items (Sound Alert)

When within the 100m/350ft Bluetooth range, use the app to activate the 60dB loud sound alert on your tracker. This helps you quickly locate hidden items, such as a wallet under a couch cushion.

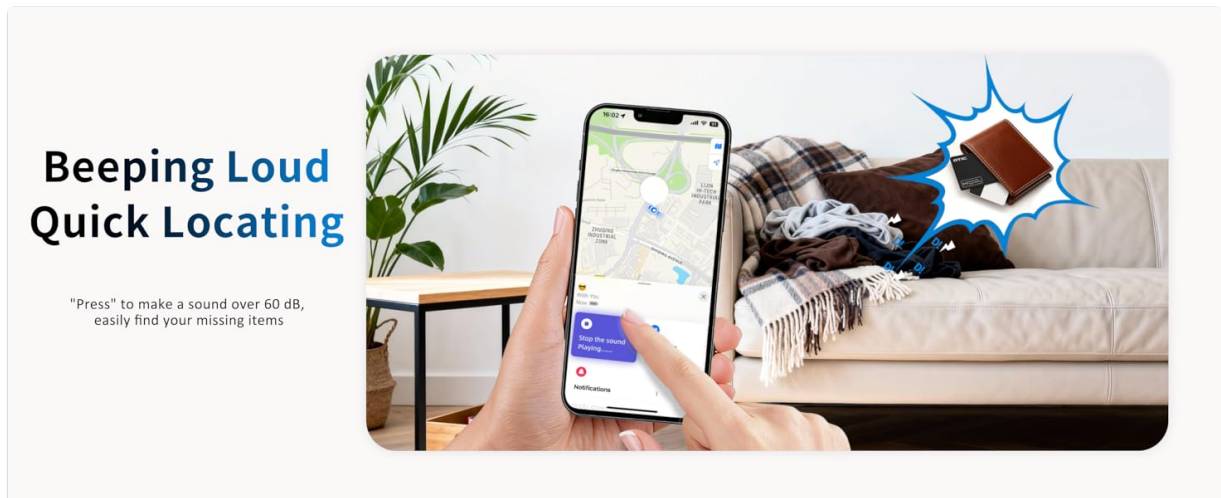


Image: A phone screen showing the 'Play Sound' option in the app, with a wallet under a couch emitting sound waves.

6.2 Remote Tracking

If your item is out of Bluetooth range, the app will display its last known location on a map. The global network of Apple/Google devices will anonymously update the tracker's location, allowing you to track it remotely.



Image: A phone screen displaying a map with a tracker's location and directions to retrieve a lost item.

6.3 Left-Behind Alerts

The tracker automatically sends alerts to your phone if your item is left behind or misplaced, helping you prevent permanent loss.



Image: A notification on a phone screen indicating that the wallet was left behind, with the last seen location.

6.4 Lost Mode

Activate 'Lost Mode' in the app to display a message and contact information to anyone who might find your item. You will receive a notification when the location becomes available.

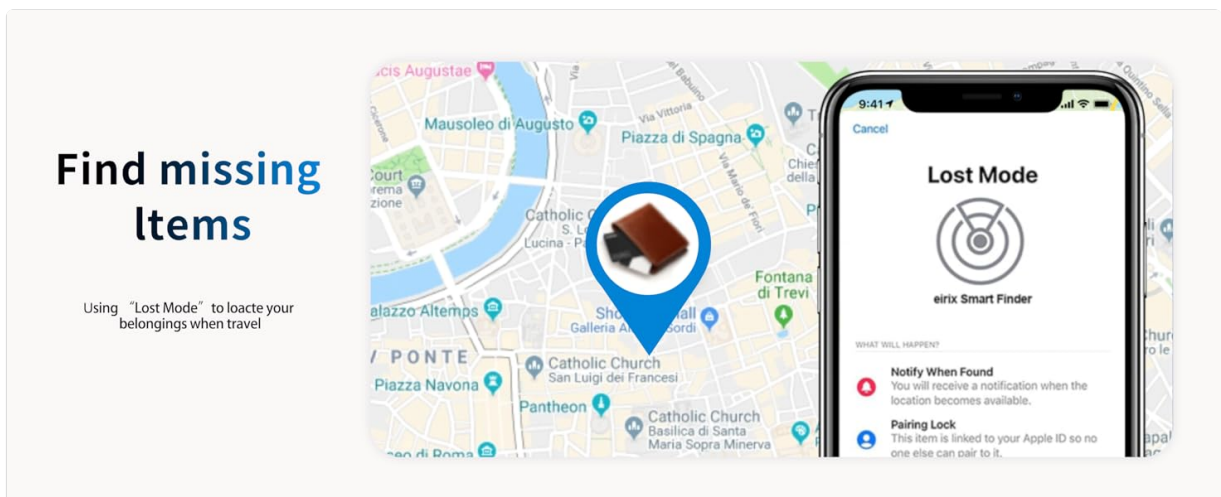


Image: A phone screen showing the 'Lost Mode' interface, explaining how to notify if found and pairing lock.

6.5 Location Sharing

You can share the tracker's real-time location with friends and family through the app, allowing multiple users to monitor your valuables.

7. MAINTENANCE

7.1 Charging

The tracker features a rechargeable battery that lasts up to 10 months on a full charge. Recharge the device using any compatible wireless charging pad. The LED indicator displays the power status and different charging modes.

7.2 Waterproofing

The OTIC Wallet Tracker has an IP67 rating, meaning it is resistant to dust and can survive water exposure up to 30 minutes in 3.3 feet (1 meter) of water. This protects it from coffee spills, rain, and daily bumps.



Image: The OTIC tracker partially submerged in water, illustrating its IP67 waterproof capability.

8. TROUBLESHOOTING

- **Tracker not pairing:** Ensure the tracker is charged and within Bluetooth range of your device. Verify Bluetooth is enabled on your phone and try restarting both the tracker and your phone.
- **No sound alert:** Check if the tracker's battery is low. Ensure your phone's volume is up and the app has permission to play sounds.
- **Inaccurate location:** Ensure your phone's location services are enabled and the app has permission to access your location. Remote tracking relies on the network of other devices, which may vary in density.
- **Battery draining quickly:** Ensure the tracker is fully charged. Frequent use of the sound alert or being constantly out of range may consume more power.

9. SPECIFICATIONS

Brand	OTIC
-------	------

Model	BS-3514SA
Compatible Devices	Android, iPhone
Battery Type	Rechargeable (1 D battery included)
Battery Average Life	Up to 10 months
Control Method	App, Remote
Waterproof Rating	IP67
Material	Plastic

10. WARRANTY AND SUPPORT

The OTIC Dual System Bluetooth Wallet Tracker comes with a 1-year warranty. For technical support, warranty claims, or further assistance, please contact OTIC customer service through the official website or your retailer's support channels.

11. PRODUCT VIDEO

Video: An official product video from Otic ShopUS demonstrating the features and functionality of the OTIC Wallet Tracker.