

reffmov B0GFMCV7K3

reffmov 12-inch Cordless Electric Weed Eater Instruction Manual

Model: B0GFMCV7K3

1. INTRODUCTION

Thank you for choosing the reffmov 12-inch Cordless Electric Weed Eater. This versatile 4-in-1 tool is designed for efficient lawn care, functioning as a brush cutter, grass trimmer, string trimmer, and lawn edger. Equipped with an 800W brushless motor and powered by dual 3000mAh lithium-ion batteries, it delivers 20,000 RPM for effective cutting across various terrains. This manual provides essential information for safe operation, assembly, maintenance, and troubleshooting.

2. SAFETY INFORMATION

Always prioritize safety when operating power tools. Read and understand all instructions before use. Failure to follow these instructions may result in electric shock, fire, and/or serious injury.

General Safety Warnings:

- **Wear appropriate personal protective equipment (PPE):** Always wear safety goggles or glasses, heavy-duty gloves, long pants, and sturdy footwear. Hearing protection is recommended.
- **Keep bystanders away:** Ensure children, pets, and other people are at a safe distance (at least 50 feet/15 meters) from the operating area.
- **Inspect the work area:** Before starting, clear the area of any debris, rocks, wires, or other objects that could be thrown or entangled in the cutting head.
- **Disconnect battery:** Always remove the battery pack before making any adjustments, changing accessories, cleaning, or storing the tool.
- **Avoid wet conditions:** Do not operate the tool in rain or damp conditions.
- **Maintain firm grip:** Hold the tool firmly with both hands during operation.
- **Use correct blades:** Only use blades specified for this tool and for the intended cutting task.
- **Store safely:** Store the tool and batteries in a dry, secure place out of reach of children.

3. PACKAGE CONTENTS

Verify that all items are present in the package before assembly.



Image: Package contents including batteries, blades, and accessories.

- 21V 3.0Ah Lithium-Ion Battery (x2)
- Steel Triangular Blade
- Circle Saw Blade
- Metal Flat Iron Blade
- Plastic String and Replacement String
- Battery Charger
- Protective Gloves
- Safety Goggles
- Screwdriver & Wrench
- Main Unit (Motor Head, Shaft, Handle)
- Auxiliary Wheels Kit

4. SETUP

Assembly of Main Unit:

1. Connect the shaft sections by aligning the assemblable buckle and pushing until it locks securely.
2. Attach the auxiliary handle to the main shaft at a comfortable position for two-handed operation.
3. Install the protective grass guard onto the motor head. Ensure it is firmly in place to prevent debris from being thrown towards the user.
4. Install the anti-collision steel ring around the cutting head.

Blade Installation:

Refer to the diagram below for detailed blade installation steps. Always ensure the battery is removed before changing blades.

Reffmov

2026 Upgrade 4-IN-1 CORDLESS GRASS TRIMMER



850W



20000RPM



2×3.0Ah



12inch



Image: Blade installation steps.

1. Install the grass guard.
2. Install the anti-collision steel ring.
3. Turn the bottom washer to find the small hole and insert the provided tool to lock the shaft.
4. Place the desired circular saw blade onto the shaft, ensuring the side with lettering faces up. The blade gear turns clockwise.
5. Place the metal gasket.
6. Place the blue washer.
7. Thread on the nut.
8. Tighten the blade by turning the tool counter-clockwise.
9. To remove the blade, rotate the base to find the small hole, insert the tool to secure the base, and then loosen the nut.

Attaching Auxiliary Wheels:

The removable wheels kit transforms your trimmer into a wheeled edger, providing stability and reducing fatigue.

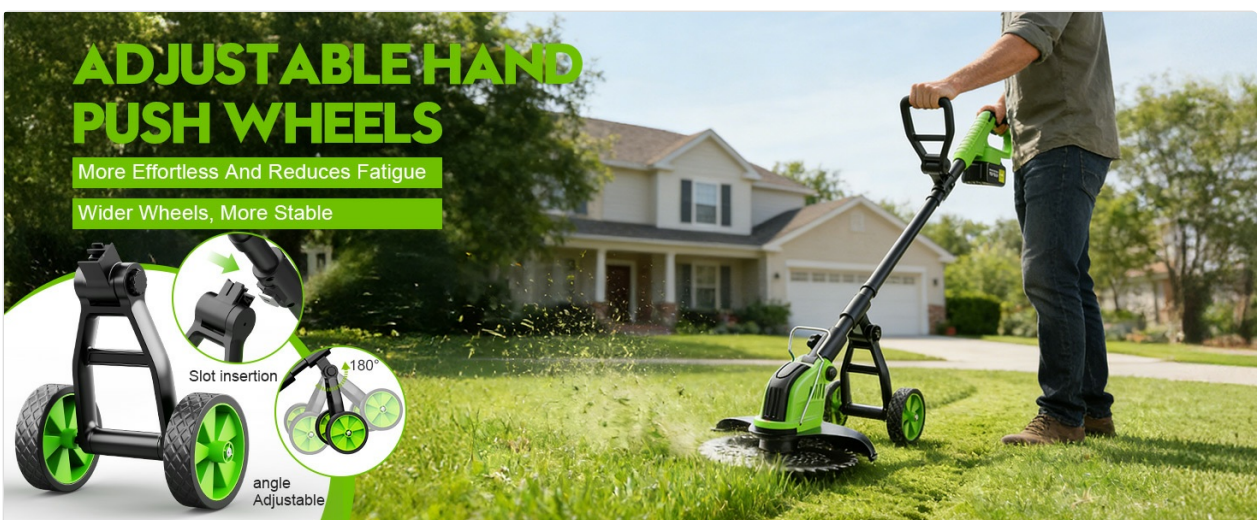


Image: Adjustable hand push wheels for stability and reduced fatigue.

- Slide the wheel assembly onto the lower shaft until it clicks into place.
- Adjust the wheel angle as needed for desired cutting height and maneuverability.

5. OPERATING INSTRUCTIONS

Charging and Installing Batteries:

- Fully charge both 3000mAh lithium-ion batteries using the provided charger. Charging time is approximately 2-3 hours per battery.
- Insert a fully charged battery pack into the battery slot on the tool's handle until it clicks securely.
- To remove, press the battery release button and slide the battery out.



Image: Dual 3000mAh batteries for extended runtime.

Starting and Stopping the Tool:

- To start: Press the self-locking push knob, then squeeze the ON/OFF trigger.
- To stop: Release the ON/OFF trigger.

Adjustable Cutting Head:

The cutting head can be adjusted from 0 to 90 degrees to suit various trimming and edging tasks.



Image: 0-90 degree adjustable head knob for versatile cutting.

- To adjust the angle, press the cutting head lock button and rotate the head to the desired position. Release the button to lock.

Selecting the Right Blade:

The tool comes with four types of blades, each suited for different cutting needs:



Image: Four types of blades for different plants and tasks.

- **Plastic String:** Ideal for grass lawns and tender grass.
- **Metal Flat Iron Blade:** Suitable for ripe grass and general weeds.
- **Steel Triangular Blade:** Best for weeding on uneven terrain.
- **Circle Saw Blade:** Designed for cutting thicker bushes, small shrubs, and branches (12-inch cutting width).

Operating Modes:

- **Mower Mode:** Use with the auxiliary wheels and appropriate blade for general lawn cutting.
- **Trimmer Mode:** Use without wheels or with wheels for precise trimming of grass and weeds.
- **Edger Mode:** Adjust the cutting head to 90 degrees and use with the wheels for clean lawn edges.

Video: Overview of the reffmov Electric Weed Eater in action.

Video: Demonstrating the 4-in-1 functionality of the electric weed eater.

6. MAINTENANCE

Regular maintenance ensures optimal performance and extends the life of your tool. Always remove the battery before performing any maintenance.

Cleaning:

- After each use, clean the cutting head, guard, and housing with a damp cloth. Remove any accumulated grass, dirt, or debris.
- Do not use harsh chemicals or abrasive cleaners.

Blade Care:

- Inspect blades regularly for wear, damage, or dullness. Replace worn or damaged blades immediately.
- Ensure blades are securely fastened before each use.

Battery Care:

- Store batteries in a cool, dry place away from direct sunlight and extreme temperatures.
- Do not store batteries in a discharged state for extended periods. Charge them periodically if not in use.
- Use only the charger provided by reffmov.

7. TROUBLESHOOTING

If you encounter issues with your reffmov electric weed eater, refer to the following common problems and solutions:

Problem	Possible Cause	Solution
Tool does not start	Battery not charged or improperly inserted Safety lock not engaged Faulty battery or charger	Ensure battery is fully charged and correctly inserted Press the self-locking push knob before squeezing the trigger Test with a different charged battery; check charger functionality
Poor cutting performance	Dull or incorrect blade Excessive growth for blade type Motor overload	Replace blade or select appropriate blade for the task Cut in smaller passes; use a more robust blade (e.g., saw blade for thick brush) Reduce load on the motor by cutting less material at once
Excessive vibration	Damaged or unbalanced blade Loose components	Inspect and replace damaged blades; ensure blade is correctly installed Check all connections and fasteners for tightness
Short battery life	Battery not fully charged Old or damaged battery Heavy workload	Ensure battery is fully charged before use Consider replacing the battery Use the tool for appropriate tasks; avoid continuous heavy cutting

If the problem persists after attempting these solutions, please contact customer support.

8. SPECIFICATIONS

Brand	reffmov
Model	B0GFMCV7K3
Power Source	Battery Powered
Motor	800W Brushless
No-Load Speed	20,000 RPM
Cutting Width	12 Inches
Battery Type	Lithium-Ion
Battery Capacity	2 x 3000mAh (included)
Charging Time	2-3 hours per battery
Approx. Working Time	60-90 minutes (total with two batteries)
Item Weight	11 Pounds
Item Dimensions (L x W)	17"L x 13"W

9. WARRANTY & SUPPORT

reffmov is committed to providing quality products and customer satisfaction.

Warranty:

This product is covered by a **12-Month Warranty** from the date of purchase. This warranty covers manufacturing defects and workmanship under normal use. It does not cover damage due to misuse, neglect, accidents, or unauthorized modifications.

Customer Support:

For any questions, technical assistance, or warranty claims, please contact reffmov customer support. We offer **VIP 24/7 Support** and **365-Day Service** to ensure your satisfaction.

Please have your model number (B0GFMCV7K3) and purchase date ready when contacting support.

Contact information can typically be found on the product packaging or the retailer's website where the product was purchased.