



Manuals.plus /

› Redroad /

› Redroad Robot Vacuum and Mop R11 User Manual

Redroad R11

Redroad Robot Vacuum and Mop R11 User Manual

Model: R11

1. IMPORTANT SAFETY INFORMATION

Please read this manual carefully before using the Redroad Robot Vacuum and Mop R11. Keep it for future reference. This appliance is for household use only.

- Do not allow children to operate the robot. Supervise children and pets when the robot is operating.
- Ensure the charging station is placed on a level surface against a wall, with adequate clear space around it.
- Remove power cords, small objects, and fragile items from the floor before cleaning to prevent entanglement or damage.
- Do not use the robot in wet environments or on surfaces with standing water.
- Do not use the robot to pick up large debris, liquids, burning or smoking materials.
- Regularly clean the brushes and filters to maintain optimal performance.

2. PACKAGE CONTENTS

Verify that all items are present in the package:

- Robot Vacuum Main Unit
- Self-Emptying Station (4L capacity)
- 2-in-1 Dustbin & Water Tank
- Mop Cloths × 2
- High-Efficiency Filter × 2
- Anti-Tangle Side Brush × 2
- Dust Bags × 2 (for 180 days of collection)
- Cleaning Brush
- User Manual



Image: All components included in the Redroad R11 Robot Vacuum package.

3. PRODUCT OVERVIEW

Robot Vacuum Main Unit

The R11 robot features a 360° Smart LiDAR navigation system for precise mapping and efficient cleaning routes. It is equipped with advanced sensors for obstacle avoidance and drop sensing.

Self-Emptying Station

The 4-liter self-emptying station automatically transfers collected dust and debris from the robot's dustbin into a disposable dust bag, providing up to 90 days of hands-free cleaning. Two dust bags are included, offering 180 days of use.

4. SETUP GUIDE

4.1 Charging Station Placement

1. Place the self-emptying station against a wall on a hard, level surface.
2. Ensure there is at least 0.5 meters (1.6 feet) of clear space on both sides and 1.5 meters (4.9 feet) in front of the station.
3. Connect the power cord to the station and plug it into a power outlet.



Image: The Redroad R11 Robot Vacuum docked with its self-emptying station.

4.2 Initial Charge

Place the robot onto the charging station. The robot will automatically align and begin charging. For first-time use, ensure the robot is fully charged before its initial cleaning cycle.

4.3 App Download and Connection

1. Download the Redroad app from your smartphone's app store.
2. Open the app and follow the on-screen instructions to create an account and add your R11 robot.
3. The robot supports dual-band WiFi (5GHz & 2.4GHz). Ensure your phone is connected to the same network during setup.
4. For syncing, you may need to press and hold the home and power buttons on the vacuum simultaneously as per some user feedback.

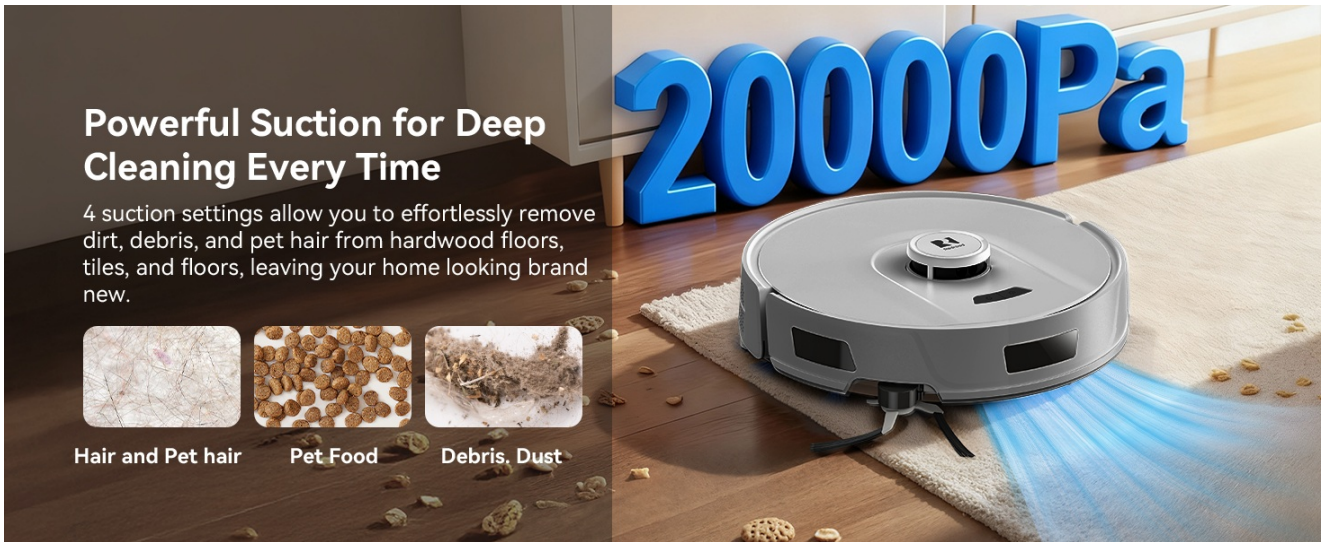


Image: The Redroad app for smartphone control and voice command integration.

4.4 Initial Mapping

During its first cleaning cycle, the robot will use its 360° Smart LiDAR navigation to create a detailed map of your home. This map can be viewed and customized in the app. The robot can store up to 4 different maps, suitable for multi-floor homes.



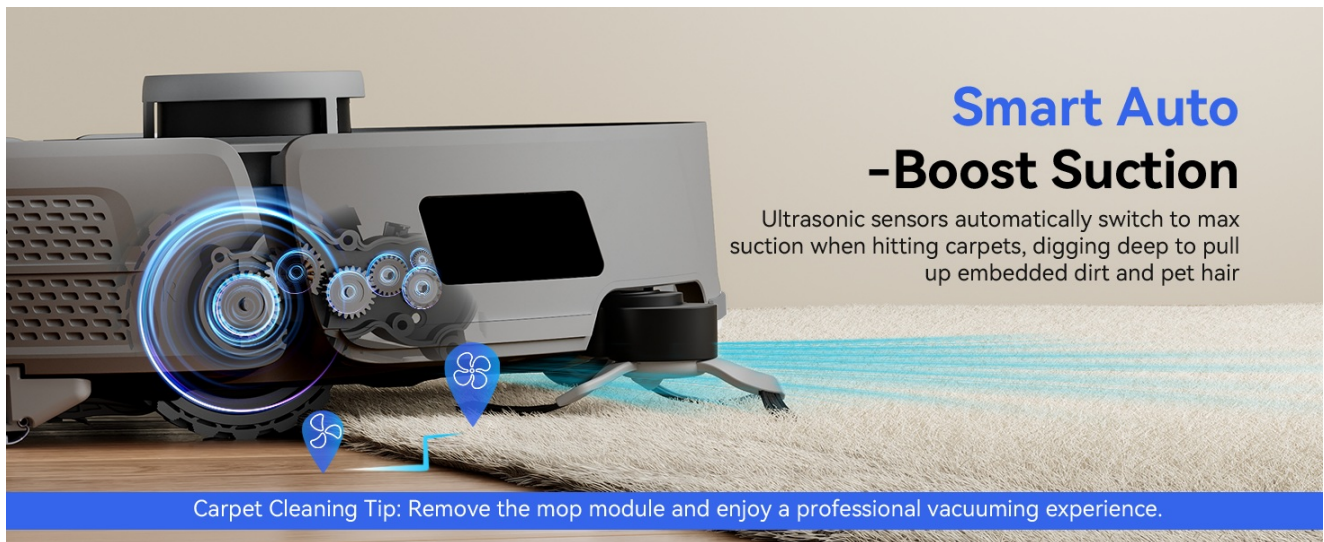
Image: The Redroad R11 utilizing LiDAR navigation for efficient home mapping.

5. OPERATING INSTRUCTIONS

5.1 Cleaning Modes

The R11 offers three cleaning modes: Vacuum Only, Mop Only, and Vacuum & Mop. You can switch between these modes via the app based on your cleaning needs.

- **Vacuum Only:** Ideal for dry debris and carpets. The large-capacity dustbin efficiently collects dirt.
- **Mop Only:** For hard floors. The robot precisely controls three water flow levels to remove stains without over-wetting.
- **Vacuum & Mop:** Combines both functions for comprehensive cleaning of hard floors.



Smart Auto -Boost Suction

Ultrasonic sensors automatically switch to max suction when hitting carpets, digging deep to pull up embedded dirt and pet hair

Image: The Redroad R11 showcasing its versatile 3-in-1 cleaning capabilities.

5.2 Smart Features

- **Scheduled Cleaning:** Set specific times for the robot to clean automatically through the app.
- **No-Go Zones & Virtual Walls:** Define areas the robot should avoid using the app. This prevents the robot from entering specific rooms or getting stuck in narrow spaces.
- **Voice Control:** Compatible with Alexa and Google Home for convenient voice commands.
- **Smart Auto-Boost Suction:** Ultrasonic sensors detect carpets and automatically increase suction power for deeper cleaning.
- **Smart Obstacle Detection:** Advanced laser sensors help the robot navigate around obstacles, preventing collisions.
- **Smart Drop Sensing:** Prevents the robot from falling down stairs or off ledges.
- **Auto-Recharge and Resume:** If the battery runs low during a cleaning cycle, the robot will return to the charging station, recharge, and then resume cleaning from where it left off.



Image: The robot vacuum respecting defined No-Go Zones and Virtual Walls.

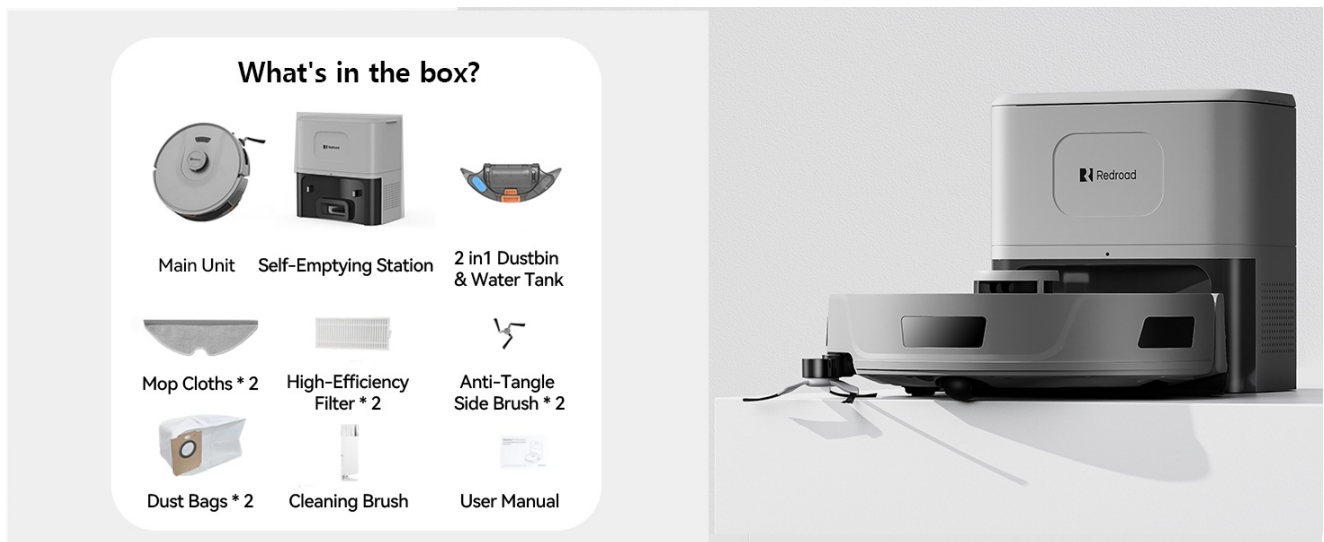


Image: The robot vacuum's smart obstacle detection in action.

5.3 Extended Side Brush

The mechanical arm-extended side brush reaches deep into corners and along wall edges, providing over 30% more horizontal coverage than standard side brushes. Its anti-tangle design minimizes hair entanglement, reducing maintenance.

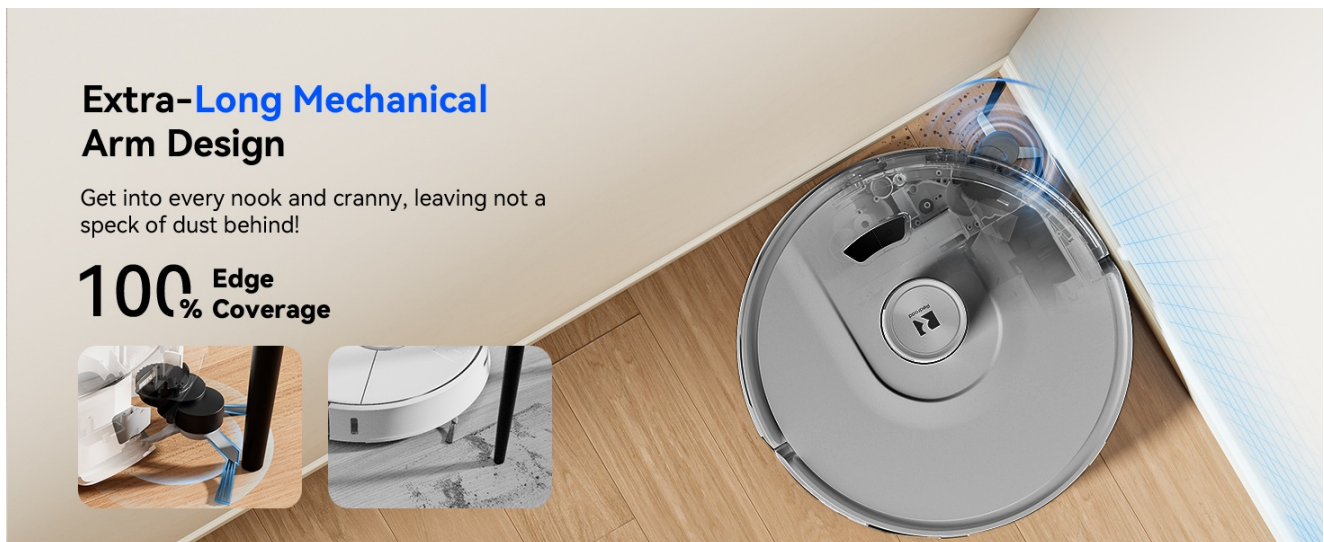


Image: The extended side brush effectively cleaning edges and corners.

6. MAINTENANCE

Regular maintenance ensures optimal performance and extends the lifespan of your Redroad R11.

6.1 Self-Emptying Station Dust Bag

- The 4L dust bag in the self-emptying station typically lasts up to 90 days.
- Replace the dust bag when the indicator light on the station or the app notifies you.
- To replace, open the top cover of the station, remove the full bag, and insert a new one.



Image: The self-emptying station with its 4L dust bag for extended hands-free cleaning.

6.2 Robot Dustbin and Water Tank

- The 2-in-1 dustbin and water tank should be emptied and refilled as needed, especially before mopping.
- Remove the module from the robot, empty the dust, and fill the water tank with clean water.

6.3 Brushes and Filters

- **Main Brush:** Remove and clean the main brush regularly to remove tangled hair and debris. Use the included cleaning tool.
- **Side Brushes:** Check the side brushes for wear and tear. Replace if damaged. The anti-tangle design helps reduce hair buildup.
- **High-Efficiency Filter:** Tap out dust from the filter after each cleaning. Replace the filter every 3-6 months, or as needed.

6.4 Sensors and Charging Contacts

Wipe all sensors (LiDAR, cliff, obstacle) and charging contacts on both the robot and the station with a clean, dry cloth to ensure proper function.

7. TROUBLESHOOTING

Problem	Possible Cause	Solution
Robot does not turn on or charge.	Battery depleted; charging contacts dirty; power cord disconnected.	Ensure robot is properly docked. Clean charging contacts. Check power connection to station.
Robot gets stuck frequently.	Obstacles on floor; narrow spaces; cliff sensors dirty.	Clear floor of clutter. Use No-Go Zones in app. Clean all sensors.
Poor cleaning performance.	Dustbin full; brushes tangled; filter clogged; low suction setting.	Empty dustbin. Clean main and side brushes. Clean or replace filter. Adjust suction level in app.
App connection issues.	Incorrect WiFi password; robot too far from router; 5GHz/2.4GHz conflict.	Verify WiFi password. Move robot closer to router. Ensure phone is on the correct WiFi band during setup. Try re-pairing.
Self-emptying not working.	Dust bag full; suction port blocked; station lid not closed properly.	Replace dust bag. Clear any blockages in the station's suction port. Ensure the station lid is fully closed.

8. SPECIFICATIONS

Feature	Detail
Brand	Redroad
Model Name	Robot Vacuum R11
Suction Power	20,000 Pa
Navigation System	360° Smart LiDAR
Battery Capacity	3200 mAh Lithium Ion
Battery Life	Up to 180 minutes
Dust Bag Capacity (Station)	4 Liters (up to 90 days hands-free)
Cleaning Modes	Vacuum, Mop, Vacuum & Mop
Water Flow Levels	3 levels (App controlled)
Suction Power Levels	4 levels (App controlled)
Connectivity	5GHz & 2.4GHz WiFi, App Control, Voice Control (Alexa/Google Home)
Filter Type	High-Efficiency
Surface Recommendation	Hard Floor, Hardwood, Tile/Marble, Short Pile Carpet
Noise Level	Approx. 55dB

9. WARRANTY AND SUPPORT

Redroad provides a 2-year warranty for the R11 Robot Vacuum. For any operational issues or malfunctions, please

contact our official after-sales support team. We guarantee an effective solution within 24 hours.

Thank you for choosing Redroad robotic vacuums.

10. PRODUCT VIDEOS

Your browser does not support the video tag.

Video: An overview of the Redroad R11 Robot Vacuum and Mop, demonstrating its features and cleaning capabilities.