

Manuals+

[Q & A](#) | [Deep Search](#) | [Upload](#)

manuals.plus /

- › [Suicoey](#) /
- › [Suicoey P30 10-inch Android 15 Tablet with Keyboard User Manual](#)

Suicoey P30

Suicoey P30 10-inch Android 15 Tablet User Manual

Model: P30 (T901)

1. INTRODUCTION

This manual provides detailed instructions for the setup, operation, maintenance, and troubleshooting of your Suicoey P30 10-inch Android 15 Tablet. Please read this manual thoroughly before using your device to ensure optimal performance and longevity.



Image 1.1: Overview of the Suicoey P30 Tablet highlighting its 10-inch display, Gemini AI, Android 15, 8000mAh battery, and storage capacity.

2. SETUP

2.1 Unboxing and Package Contents

Carefully unpack your Suicoey P30 tablet and verify that all items are present:

- 1 x 10-inch Tablet
- 1 x Keyboard
- 1 x Mouse

- 1 x Stylus
- 1 x Black Protective Case
- 1 x User Manual
- 1 x USB Charger
- 1 x Type-C Cable

Suicoey 2025 Upgraded P30 Tablet

10"
Vivid IPS Display



Gemini AI



8000mAh Battery



GMS Certified



256GB ROM

26(4+22)GB RAM **2TB Expand**



Android 15



Split Screen



Image 2.1: All accessories included with the Suicoey P30 Tablet.

2.2 Initial Power On and Charging

1. Connect the Type-C cable to the tablet's charging port and the USB charger.
2. Plug the charger into a power outlet. The tablet is equipped with an 8000mAh battery.
3. Press and hold the Power button until the screen lights up.
4. Follow the on-screen prompts to complete the initial setup, including language selection and Wi-Fi connection.

2.3 Connecting Accessories

Your tablet supports Bluetooth 5.0 for connecting the included keyboard, mouse, and stylus.

1. Go to **Settings > Connected devices > Bluetooth**.
2. Turn on Bluetooth.
3. Put your keyboard, mouse, or stylus into pairing mode (refer to their individual manuals if needed).
4. Select the accessory from the list of available devices on your tablet to pair.

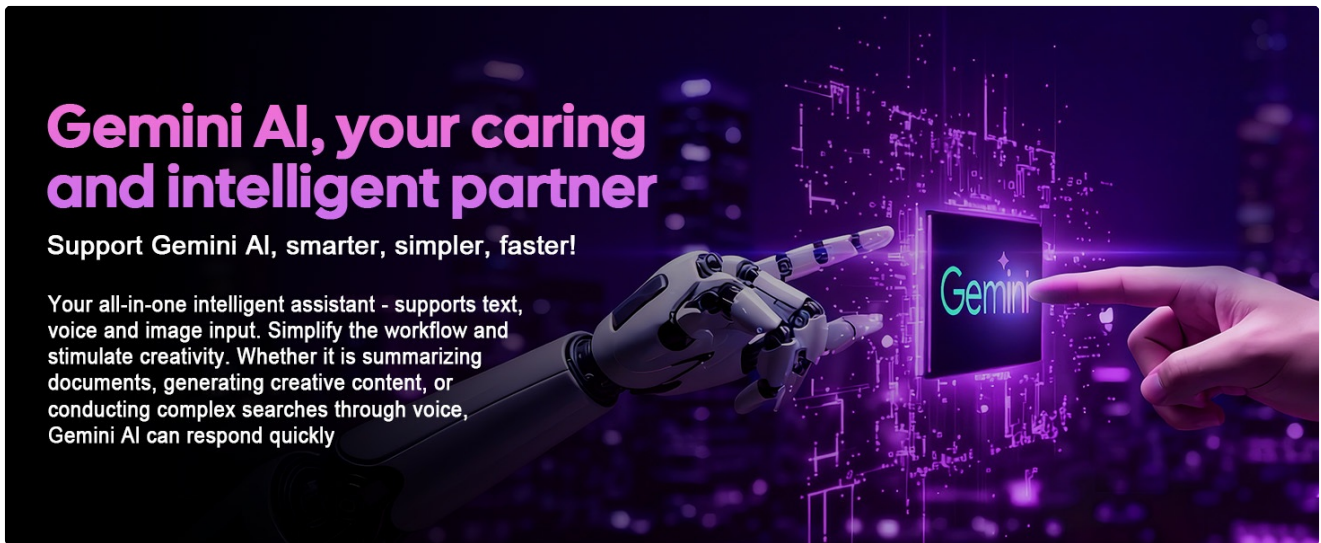


Image 2.2: The tablet with its wireless keyboard and mouse accessories.

3. OPERATING YOUR TABLET

3.1 Android 15 & Gemini AI Features

Your tablet runs on the Android 15 operating system, offering enhanced privacy protection and refined permission controls. It also supports Gemini AI, which can summarize articles, provide real-time language translation, and assist in composing messages.

Newest Android 15 System

Protect your data with ungraded android system and customize user-friendly setup.

Efficiency

- Pre-installed Google Apps
- Intelligent Preloading
- Split Screen Multitasking

Customization

- Customize Your Widgets
- Gesture Navigation
- Set Your Display

Protection

- Clipboard History Deleted
- Application Management

User-friendliness

- Larger Folders
- Font Amplification

Android 15

Image 3.1: Android 15 system interface showing various features.

Google Intelligent Camera



Identify plants and animals



Explore the surrounding environment



Real-time translation

The journey from believing my thoughts were demonic, believing I was completely demon-possessed took several months and turns down the road of indoctrination. Choosing Christianity seemed like a credible solution to a life of ambiguity where questions piled upon themselves and formed a convoluted tangle of disillusionment—the kind of life that results when parents have more pressing matters than their children to attend to. Embracing the ready-made answers for the obscurities of life, the afterlife, and the end of the world, coupled with regular church attendance, gave two lonely souls a sense of belonging—and sense of purpose. Unfortunately faith did nothing for my anxiety forcing me to up the ante in search of the so-called rest for the

Solve mathematical problems





Identify historical events

Image 3.2: Gemini AI as an intelligent partner for tasks like summarization and content generation.

3.2 Display and Media Playback

The 10-inch IPS FHD display with a 1280x800 resolution and 60Hz refresh rate provides clear and fluid visuals. With Widevine L1 support, you can enjoy high-definition content from streaming services.




Image 3.3: The tablet's display showing vibrant media content.

3.3 Storage and Performance

The tablet features 26GB RAM (4GB physical + 22GB virtual) and 256GB of internal storage. Storage can be expanded up to 2TB using a TF card, providing ample space for applications, documents, videos, and images.

Massive Storage Less Lag

Powered by a robust 26(4+22)GB RAM, tablet handles multitasking effortlessly. With 256GB built-in tablet stores massive photos, movies, and files locally. Expandable storage lets you add more space anytime, eliminating worries about running out of room

 **26(4+22)GB**
RAM

 **256GB**
ROM

 **2TB**
Expand



Image 3.4: Visual representation of the tablet's memory and storage capabilities.

3.4 Cameras and Smart Lens

Equipped with a 13MP rear camera and a 5MP front camera, the tablet allows you to capture moments in detail. The Smart Lens feature acts as an intelligent assistant for text translation, object identification, and more.



Image 3.5: Camera features and other connectivity options.

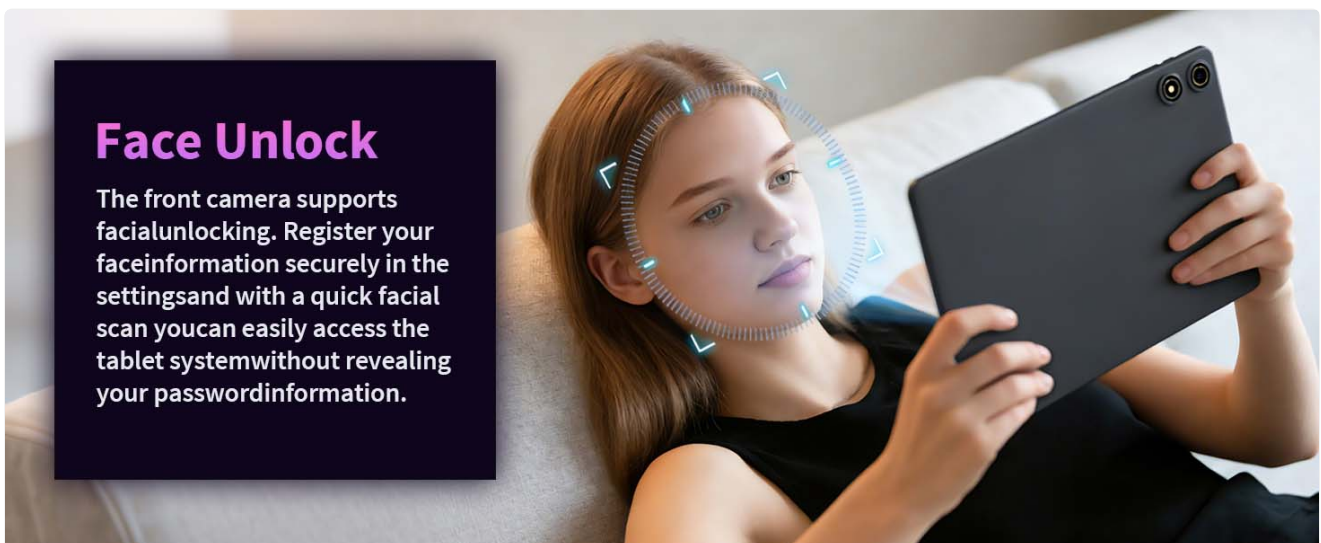


Image 3.6: Face Unlock feature for secure and convenient access.

3.5 Split-Screen Multitasking

The tablet supports split-screen functionality, allowing you to use two applications simultaneously for enhanced productivity.

Your browser does not support the video tag.

Video 3.1: Demonstrates how to use the app split-screen feature on your device.

3.6 Changing System Language

You can easily change the system language of your tablet through the settings menu.

Your browser does not support the video tag.

Video 3.2: Guide on changing the system language on your tablet.

4. MAINTENANCE

4.1 Battery Care

The 8000mAh battery provides extended usage. To maximize battery life, avoid extreme temperatures, use the provided charger, and avoid fully discharging the battery frequently.

8000mAh Battery, All-day Companionship



8000mAh
Battery



Charger
Included



Type-c
Charging

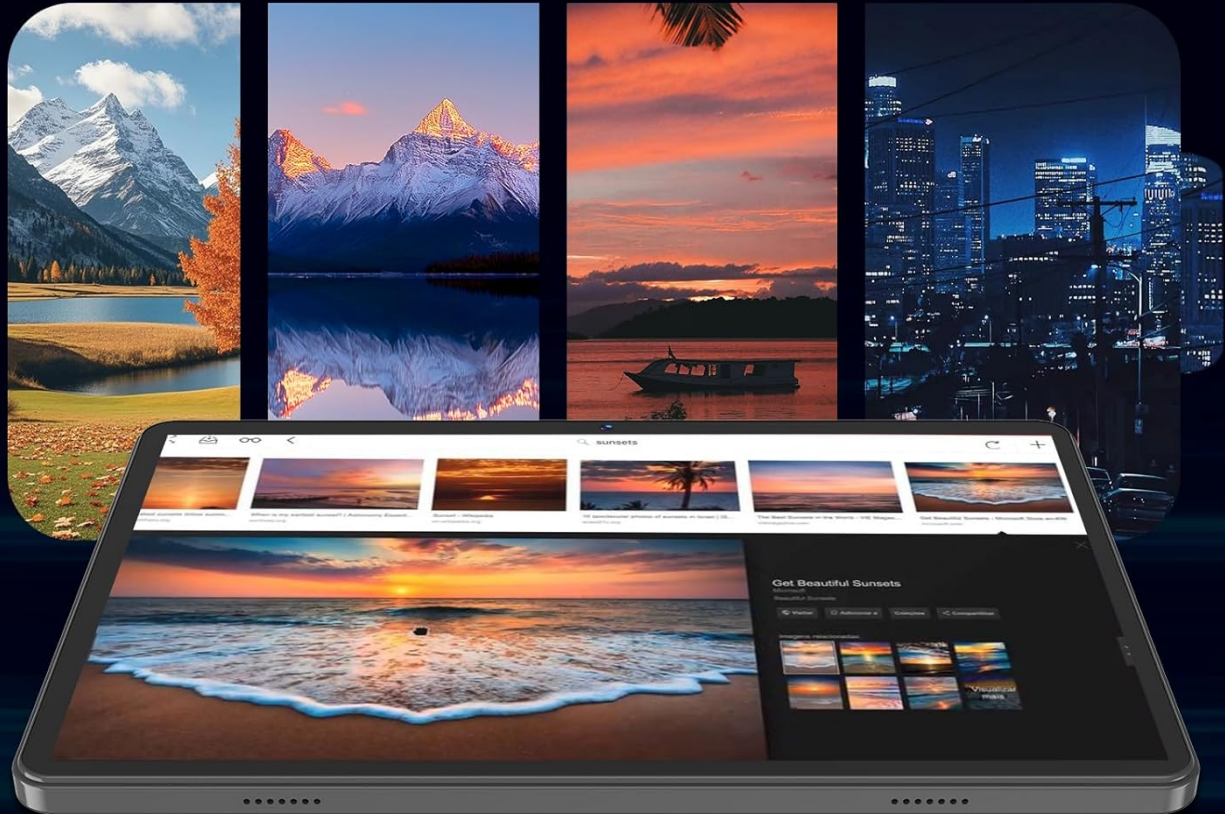


Image 4.1: Tablet battery information, emphasizing the 8000mAh capacity.

4.2 Storage Management

Regularly manage your 256GB internal storage and any inserted 2TB TF card. Delete unnecessary files and applications to maintain optimal performance.

4.3 System Updates

Keep your tablet's operating system updated to ensure you have the latest features, security patches, and performance improvements.

1. Go to **Settings > System > System updates**.
2. Check for available updates and follow the on-screen instructions to install them.

Your browser does not support the video tag.

Video 4.2: Instructions on how to upgrade your tablet's system version.

5. TROUBLESHOOTING

5.1 Wi-Fi Connectivity Issues

If your Wi-Fi is not connecting or keeps dropping, try the following steps:

1. Restart your tablet and Wi-Fi router.
2. Go to **Settings > Network & internet > Internet**.
3. Forget the problematic Wi-Fi network and reconnect.
4. If issues persist, consider resetting network settings: **Settings > System > Reset options > Reset Bluetooth & Wi-Fi**.

Your browser does not support the video tag.

Video 5.1: Steps to fix Wi-Fi not connecting or keeps dropping on your P30 tablet.

5.2 Camera Permissions

If you encounter issues with the camera, ensure that camera permissions are enabled and clear the camera app's cache.

1. Go to **Settings > Apps > Camera > Permissions** and ensure camera access is allowed.
2. To clear cache: **Settings > Apps > Camera > Storage & cache > Clear cache**.

Your browser does not support the video tag.

Video 5.2: Steps to resolve camera permission issues by enabling permissions in system settings.

5.3 General Reset Options

For persistent issues, you may consider using the reset options. Be aware that a factory reset will erase all data on your device.

- Navigate to **Settings > System > Reset options**.
- Options include: Reset Mobile Network Settings, Reset Bluetooth & Wi-Fi, Reset app preferences, Delete private space, Erase all data (factory reset), and Recovery mode.

6. SPECIFICATIONS

Feature	Specification
Brand	Suicoey
Model Name	P30
Model Number	T901
Operating System	Android 15
Screen Size	10 Inches
Display Resolution Maximum	1280x800 Pixels
RAM Memory Installed	26 GB
Memory Storage Capacity	256 GB
Flash Memory Supported Size Maximum	2 TB

Feature	Specification
Processor Brand	Unisoc
CPU Model Number	T606
Battery Cell Type	Lithium Polymer
Lithium-Battery Energy Content	8000 Milliampere Hour (mAh)
Rear Facing Camera Photo Sensor Resolution	13 MP
Front Photo Sensor Resolution	5 MP
Wireless Technology	Bluetooth, Wi-Fi (2.4G/5G)
Hardware Interface	3.5mm Audio, Type-C port
Other Special Features	Expandable Storage, Stereo Speakers, Stylus Support, Supports USB OTG

7. WARRANTY AND SUPPORT

7.1 Warranty Information

Your Suicoey P30 tablet comes with a 1-year manufacturer's warranty. Please retain your proof of purchase for warranty claims.

7.2 Customer Support

For further assistance, technical support, or warranty inquiries, please contact Suicoey customer service through their official channels or visit the [Suicoey Store on Amazon](#).