

manuals.plus /

› [GMKtec](#) /

› [GMKtec Mini PC N95 G3S Instruction Manual](#)

GMKtec G3S

GMKtec Mini PC N95 G3S Instruction Manual

Model: G3S | Brand: GMKtec

1. INTRODUCTION

The GMKtec Mini PC N95 G3S is a compact and versatile desktop computer designed for various applications including office work, home entertainment, and business use. Powered by the 12th Gen Intel N95 processor, it offers efficient performance in a small form factor. This manual provides essential information for setting up, operating, and maintaining your device.

2. WHAT'S IN THE BOX

- GMKtec Nucbox G3 S Mini PC
- VESA Mount with Screws
- HDMI Cable
- Power Adapter
- User Manual

Retail Boxed Packaging

1. Nucbox G3S Mini PC
2. Power Adapter & Cable
3. User Manual

4. HDMI Cable
5. VESA Mount with Screws



Image: GMKtec Mini PC G3S Retail Boxed Packaging. This image displays the contents of the product box, including the mini PC, power adapter, HDMI cable, VESA mount, and user manual.

3. SETUP

3.1 Initial Connection

1. **Connect Power:** Plug the power adapter into the DC 12V 3A port on the Mini PC and then into a power outlet.
2. **Connect Display:** Use the provided HDMI cable to connect the Mini PC to your monitor or TV. The device supports dual 4K@60Hz

displays via its two HDMI 2.0 ports.

3. **Connect Peripherals:** Plug in your keyboard, mouse, and other USB devices into the available USB 3.2 ports. For wired network access, connect an Ethernet cable to the Gigabit Ethernet (RJ45 1000MbE) port.
4. **Power On:** Press the power button located on the front of the Mini PC.

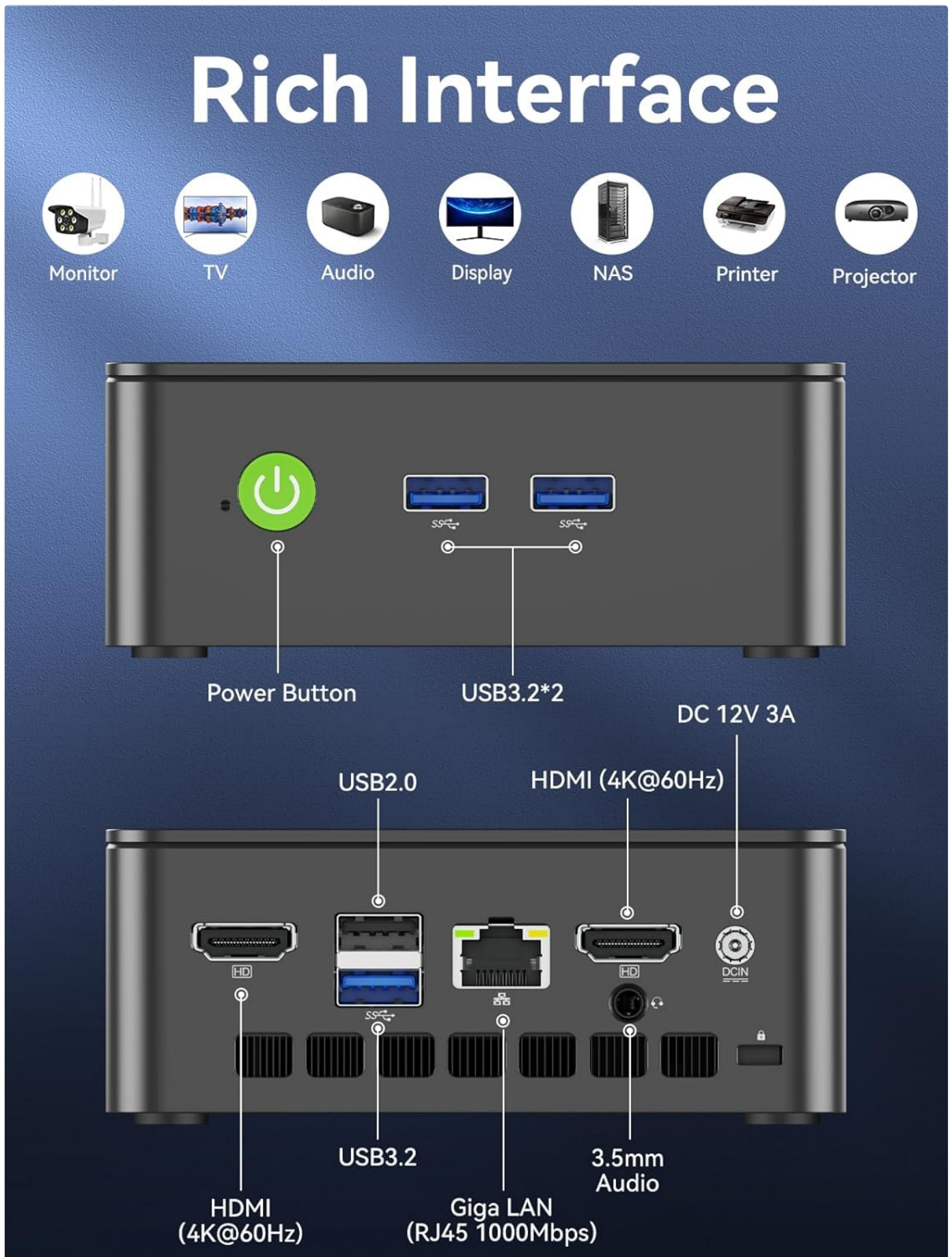


Image: GMKtec Mini PC G3S Rich Interface. This image highlights the various ports available on the mini PC, including USB 3.2, HDMI, Gigabit Ethernet, and the

power input.

3.2 Operating System Setup

The GMKtec Mini PC comes pre-installed with Windows 11 Pro. Follow the on-screen instructions to complete the initial setup, including language selection, network configuration, and user account creation.

3.3 VESA Mount Installation

The Mini PC includes a VESA mount and screws for convenient installation behind a compatible monitor or TV, allowing for a clutter-free desktop setup.

1. Attach the VESA mount bracket to the back of your monitor using the provided screws.
2. Slide the Mini PC onto the mounted bracket until it securely locks into place.

Space-saving VESA Installation & desktop placement



Desktop Placement



VESA Installation

Image: GMKtec Mini PC G3S VESA Installation. This image demonstrates how the mini PC can be mounted behind a monitor using the included VESA bracket for space-saving placement.

4. OPERATING

4.1 Dual 4K Display Support

Leverage the upgraded Intel UHD Graphics (up to 1000MHz) to connect two 4K@60Hz displays simultaneously via the dual HDMI outputs. This feature enhances multitasking capabilities for both work and entertainment.

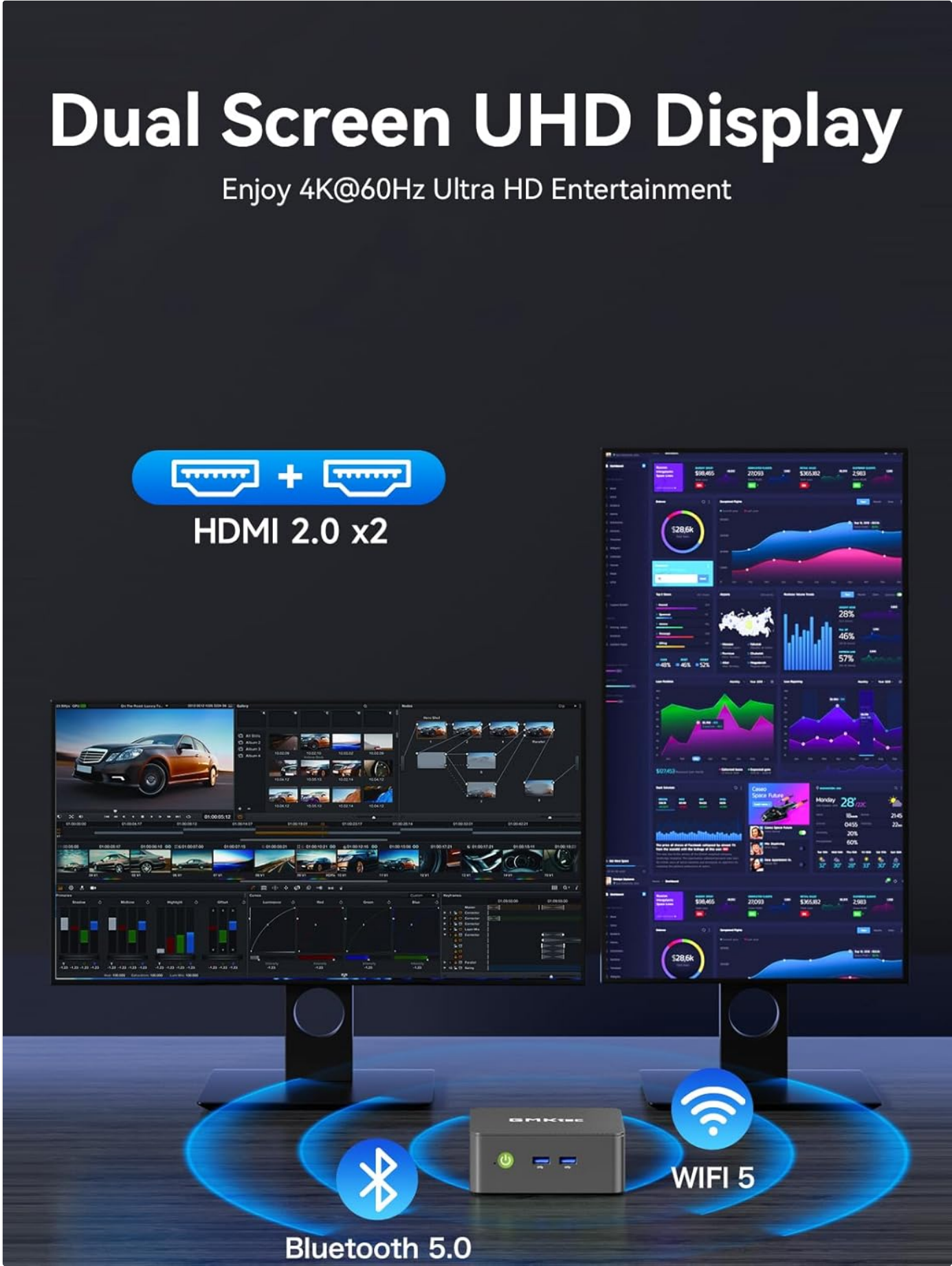


Image: GMKtec Mini PC G3S Dual Screen UHD Display. This image illustrates the mini PC connected to two 4K monitors, showcasing its dual display capabilities for enhanced productivity.

4.2 Performance Modes

The Mini PC offers three adjustable performance modes to optimize your user experience based on your needs:

- **Quiet Mode:** For silent operation during light tasks.
- **Normal Mode (Default):** Provides a balanced performance for everyday use.
- **Performance Mode:** Maximizes CPU and GPU power for demanding applications.

To switch between modes, press the 'Esc' key to enter the BIOS page during startup and select 'BIOS Setup'.

3 Modes Adjustment

Can be adjusted according to different usage scenarios to provide the best usage experience. quieter! Faster!



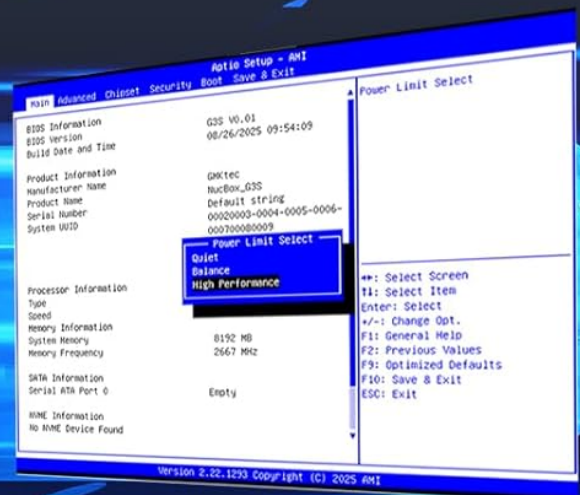
Quiet Mode



Normal Mode(Default)



Performance Mode



Press Esc to enter the BIOS page and select BIOS Setup to switch modes

Image: GMKtec Mini PC G3S 3 Modes Adjustment. This image shows the three performance modes (Quiet, Normal, Performance) and instructs users to access BIOS for mode selection.

4.3 Wireless Connectivity

The Mini PC supports WiFi 5 and Bluetooth 5.0 for wireless connections to networks and peripherals.

Super Speed Wi-Fi 5

Tap into faster WiFi speeds with Dual-Band WiFi5 2*2 2400Mbps



3 TIMES FASTER THAN BT4.2


BT5.0  BT4.2 



Image: GMKtec Mini PC G3S Super Speed Wi-Fi 5. This image highlights the device's support for dual-band WiFi 5 and Bluetooth 5.0, indicating faster wireless speeds.

5. MAINTENANCE

To ensure optimal performance and longevity of your GMKtec Mini PC, consider the following:

- **Ventilation:** Ensure the Mini PC is placed in a well-ventilated area to prevent overheating. Avoid blocking the ventilation grilles.
- **Cleaning:** Regularly clean the exterior of the device with a soft, dry cloth. Avoid using liquid cleaners directly on the ports.
- **Software Updates:** Keep your Windows 11 Pro operating system and drivers updated to benefit from the latest security patches and performance improvements.

6. TROUBLESHOOTING

- **Non-functional USB Port:** If a USB port is not recognizing devices, try connecting the device to a different USB port. Ensure the device drivers are up to date. If the issue persists with a specific port, it may indicate a hardware fault.
- **No Display Output:** Verify that the HDMI cable is securely connected to both the Mini PC and the monitor. Ensure the monitor is set to the correct input source. Try a different HDMI cable or monitor if possible.
- **System Unresponsive:** If the system becomes unresponsive, perform a hard reboot by pressing and holding the power button until the device turns off, then power it back on.
- **Overheating:** If the device feels excessively hot, check that the ventilation is not obstructed. Consider placing the Mini PC in a cooler environment or using a stand to improve airflow.

7. SPECIFICATIONS

Processor	12th Gen Intel N95 (4 Cores, 4 Threads, up to 3.4GHz, 6MB Cache)
RAM	8GB DDR4 (upgradeable to 16GB)
Storage	256GB M.2 2242 SSD (upgradeable to 512GB or 1TB)
Graphics	Intel UHD Graphics (up to 1000MHz)
Display Output	Dual HDMI 2.0 (4K@60Hz)
Connectivity	WiFi 5, Bluetooth 5.0, Gigabit Ethernet (RJ45 1000MbE)
USB Ports	USB 3.2 (x2 front), USB 3.2 (x2 rear)
Audio	3.5mm Audio Jack
Operating System	Windows 11 Pro

NEW ALDER LAKE INTEL N95 CPU PROCESSOR

Increased CPU Performance Compared to Previous N97 Processor



4 Cores
4 Threads



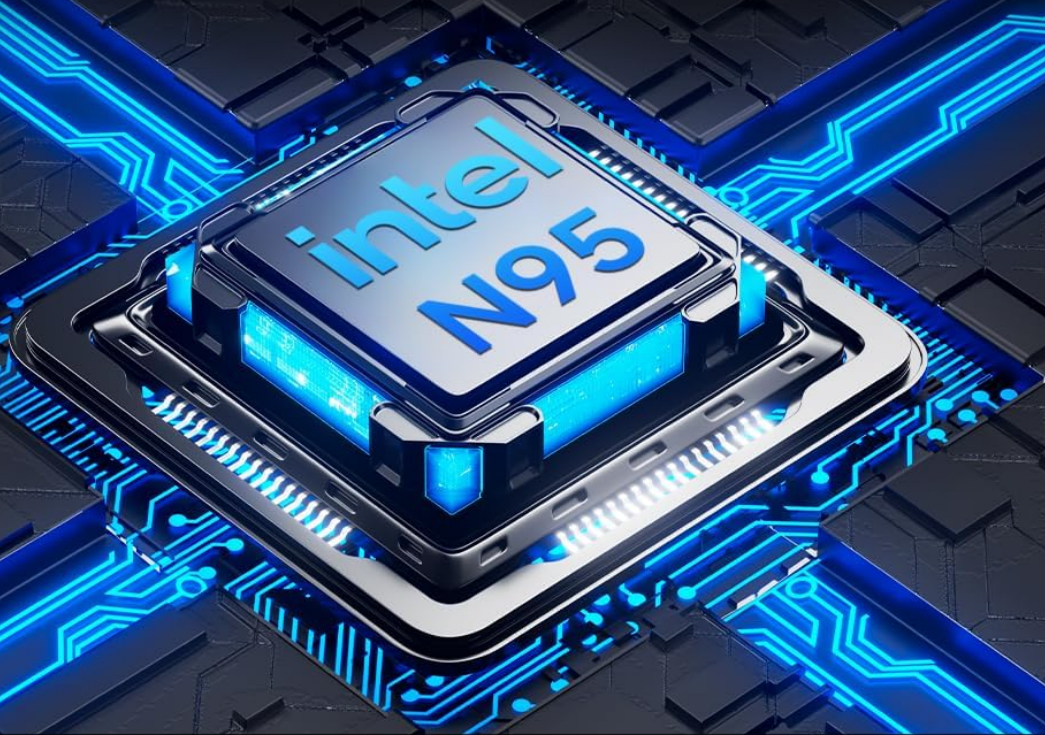
15W
TDP



6MB
Cache



3.4GHz
Fast Processor



Geekbench 6 (Multi-Core)

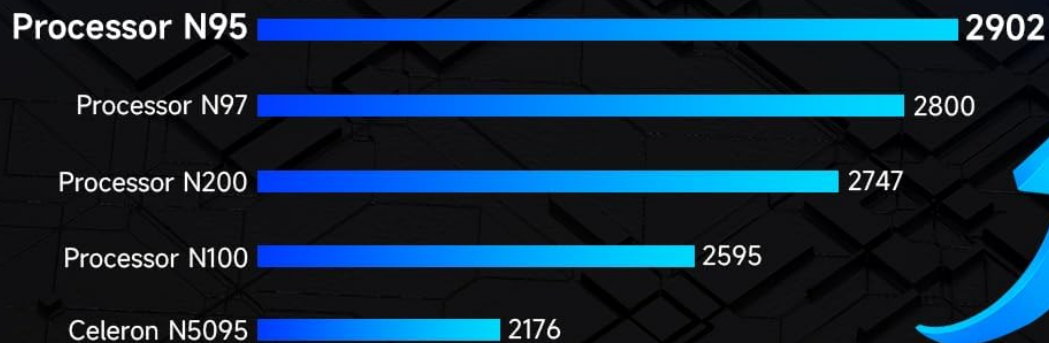


Image: GMKtec Mini PC G3S N95 Processor. This image highlights the 12th Gen Intel Alder Lake N95 CPU processor with its 4 cores, 4 threads, 6MB cache, and 3.4GHz burst frequency.

8. WARRANTY AND SUPPORT

GMKtec offers a 1-year limited warranty for each Mini PC, starting from the date of purchase. All defects due to design and workmanship are covered. For support, please contact the professional after-sales team.

