



[Manuals.plus](#) /

› [DEATTI](#) /

› DEATTI T6 4K 48MP Solar WiFi Trail Camera User Manual

DEATTI T6

DEATTI T6 4K 48MP Solar WiFi Trail Camera User Manual

Model: T6

1. INTRODUCTION

Thank you for choosing the DEATTI T6 4K 48MP Solar WiFi Trail Camera. This manual provides essential information for the proper setup, operation, and maintenance of your camera. Please read it thoroughly before use to ensure optimal performance and longevity of the device.

The DEATTI T6 is designed for outdoor use, offering high-resolution imaging and video recording capabilities, robust weather protection, and convenient wireless connectivity for various applications including wildlife observation, hunting, and property surveillance.



Figure 1: DEATTI T6 Camera Applications

The DEATTI T6 camera is versatile, suitable for hunting, farm monitoring, home security, and wildlife observation.

2. PRODUCT OVERVIEW

2.1 Key Features

- **Ultra-Clear 48MP Images & 4K HD Video:** Capture detailed photos and smooth video footage.
- **Fast 0.1-Second Trigger Speed:** Ensures quick capture of moving subjects.
- **90° Wide-Angle Lens:** Provides a broad field of view to minimize blind spots.
- **Advanced Night Vision:** 65-foot (20m) night vision range with 850nm IR LEDs for clear images in darkness.
- **IP65 Waterproof Design:** Durable and robust, resistant to dust and water, suitable for harsh outdoor conditions.
- **Solar Power & 5200mAh Battery:** Integrated solar panel and high-capacity rechargeable battery for extended operation.
- **WiFi & Bluetooth Connectivity:** Direct connection to your mobile phone via the "Trailcam Go" app for easy

photo/video download and settings adjustment (within 55 feet range, does not support home WiFi).

- **Included 64GB SD Card:** Provides ample storage for your recordings.

2.2 Package Contents

The DEATTI T6 package includes:

- DEATTI T6 Trail Camera with integrated solar panel
- Mounting bracket/strap
- 64GB SD Card
- USB Cable (for charging)
- User Manual



Figure 2: DEATTI T6 Camera with 4K HD Video Display

The camera captures high-quality 4K video, as shown by the deer footage on its display.

Super Vision Nocturne

Distance de vision nocturne de 65 pieds



Figure 3: Super Night Vision Capability

The camera offers a 65-foot night vision range, capturing clear images of wildlife like bears in low-light conditions.

3. SETUP

3.1 Charging the Battery

The camera is equipped with a built-in 5200mAh rechargeable battery and a solar panel. For initial use, it is recommended to fully charge the battery using the provided USB cable and a DC 5V/2A adapter (not included).

1. Connect the USB cable to the camera's charging port.
2. Connect the other end of the USB cable to a DC 5V/2A power adapter.
3. Allow the camera to charge until the battery indicator shows full.

The integrated solar panel will continuously charge the battery when exposed to sunlight, extending the camera's operational time.

Zwei Lademethoden



Figure 4: Charging Methods

The camera can be charged via its solar panel or a DC 5V/2A adapter (not included).

3.2 Inserting the SD Card

A 64GB SD card is included with your camera. Ensure it is inserted correctly before use.

1. Locate the SD card slot on the camera.
2. Insert the 64GB SD card into the slot with the metal contacts facing the correct direction (refer to the diagram on the camera).
3. Push the card in until it clicks into place.

3.3 Mounting the Camera

The camera can be mounted using the provided strap or bracket. Choose a location that offers a clear view of the area you wish to monitor and ensures adequate sunlight exposure for the solar panel.

1. **Using the Strap:** Thread the strap through the camera's mounting slots and secure it around a tree or pole.

2. **Using the Bracket:** Attach the bracket to a surface (e.g., wall, tree) using screws (not included), then mount the camera onto the bracket.
3. Adjust the camera's angle to achieve the desired field of view.

Panneau solaire détachable



Figure 5: Detachable Solar Panel Mounting Options

The solar panel can be mounted directly on the camera or separately up to 2 meters away for optimal sun exposure.

4. OPERATING INSTRUCTIONS

4.1 Powering On/Off

- To power on the camera, slide the power switch to the "ON" position.
- To power off the camera, slide the power switch to the "OFF" position.

4.2 Using the "Trailcam Go" App

The "Trailcam Go" app allows you to connect to your camera via WiFi and Bluetooth for remote control, viewing, and

downloading media.

1. Download the "Trailcam Go" app from your mobile device's app store.
2. Ensure your camera is powered on.
3. On your mobile device, activate WiFi and Bluetooth.
4. Open the "Trailcam Go" app and follow the on-screen instructions to connect to your camera. The camera's WiFi range is approximately 55 feet (17 meters). Note: The camera does not support connection to home WiFi networks.
5. Once connected, you can view live footage, adjust settings, and download photos/videos directly to your phone.

Connexion WiFi et Bluetooth "TrailCam GO" Contrôle de l'APP

55FT

Note : La portée du Wi-Fi est de 55 FT. Ne prend pas en charge la connexion au WiFi domestique.

Figure 6: WiFi and Bluetooth Connectivity via App

Connect your smartphone to the camera using the "Trailcam Go" app for remote access and control.

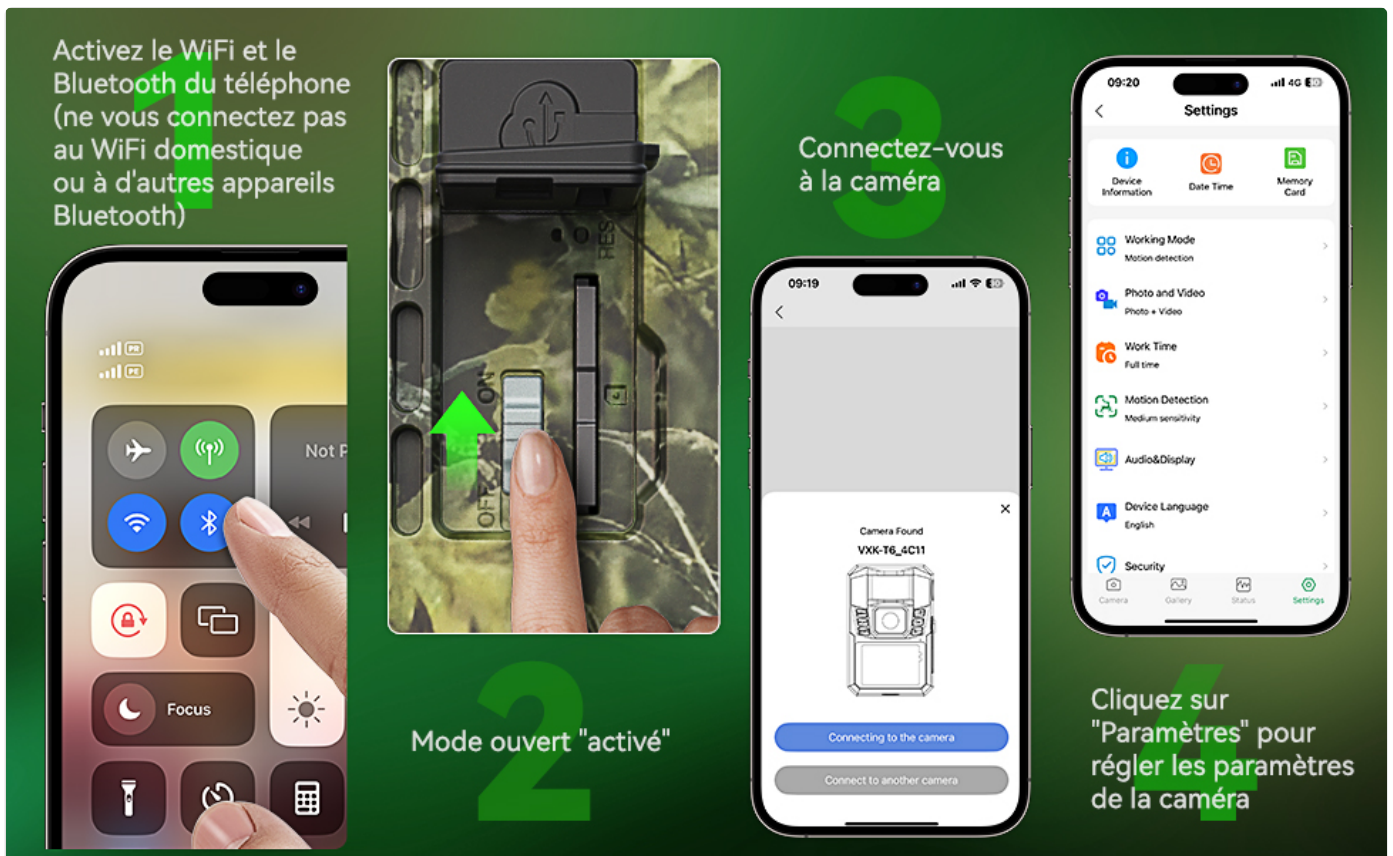


Figure 7: "Trailcam Go" App Interface

The app allows you to manage camera settings, view media, and download files.

4.3 Recording Modes

The DEATTI T6 camera supports various recording modes, typically configured through the "Trailcam Go" app:

- **Photo Mode:** Captures still images when motion is detected.
- **Video Mode:** Records video clips when motion is detected.
- **Photo + Video Mode:** Captures both a still image and a video clip when motion is detected.
- **Time-Lapse Mode:** Captures images at set intervals, regardless of motion.

Adjust settings such as resolution, video length, and sensitivity within the app to suit your monitoring needs.

Déclenchement rapide 0.1S

Immortalisez Chaque Excellent Moment



Figure 8: Fast Trigger Speed

The camera's 0.1-second trigger speed ensures you capture fast-moving subjects.

5. MAINTENANCE

5.1 Cleaning

- Gently wipe the camera lens and solar panel with a soft, dry cloth to remove dust and dirt.
- Do not use abrasive cleaners or solvents, as they may damage the camera's surface or lens.

5.2 Battery Care

- Ensure the solar panel is regularly exposed to direct sunlight for continuous charging.
- If storing the camera for an extended period, fully charge the battery and store it in a cool, dry place. Recharge periodically to maintain battery health.

5.3 Weather Protection

The DEATTI T6 camera has an IP65 waterproof rating, making it resistant to rain and dust. However, avoid submerging the camera in water.

IP65 WATERPROOF

Durable et Robuste



Figure 9: IP65 Weather Resistance

The camera is designed to withstand diverse outdoor conditions, from sun to rain and snow.

6. TROUBLESHOOTING

Problem	Possible Cause	Solution
Camera not powering on	Low battery; Power switch off	Charge the battery fully; Ensure power switch is in "ON" position.

Problem	Possible Cause	Solution
Cannot connect to app via WiFi/Bluetooth	Camera too far; WiFi/Bluetooth not enabled on phone; App not open; Camera not in pairing mode	Move closer to the camera (within 55 feet); Enable WiFi and Bluetooth on your phone; Open "Trailcam Go" app; Ensure camera is powered on and ready for connection.
Poor image/video quality	Dirty lens; Low light conditions; Incorrect settings	Clean the lens; Ensure adequate lighting or proper night vision settings; Adjust resolution and other settings in the app.
Motion detection not working	PIR sensor blocked; Sensitivity too low; Object out of range	Clear any obstructions from the PIR sensor; Increase motion detection sensitivity in the app; Ensure subjects are within detection range.
SD card error	SD card not inserted correctly; Corrupted card; Full card	Reinsert the SD card; Format the SD card (this will erase all data); Replace with a new SD card if issues persist; Delete old files to free up space.

7. SPECIFICATIONS

Feature	Detail
Brand	DEATTI
Model Name	T6
Image Resolution	48 Megapixels
Video Resolution	4K HD
Video Format	AVI
Trigger Speed	0.1 seconds
Lens Angle	90° Wide-Angle
Night Vision Range	65 feet (20 meters) with 850nm IR LEDs
Connectivity	WiFi, Bluetooth (via "Trailcam Go" app)
WiFi Range	Up to 55 feet (17 meters)
Power Source	5200mAh Rechargeable Battery, Solar Panel
External Power Input	DC 5V/2A
Storage	64GB SD Card (included)
Waterproof Rating	IP65
Dimensions (L x W x H)	20 x 8 x 10 cm (approximate)
Usage Environment	Outdoor

8. WARRANTY AND SUPPORT

For warranty information and technical support, please refer to the contact details provided with your purchase or visit the official DEATTI website. Keep your purchase receipt as proof of purchase for warranty claims.
If you encounter any issues not covered in this manual, please contact DEATTI customer service for assistance.