



Manuals.plus /

› Samoser /

› Samoser Gas Range Oven Igniter Instruction Manual (Flat Style)

Samoser Gas Range Oven Igniter Flat Style

Samoser Gas Range Oven Igniter Instruction Manual (Flat Style)

Model: Gas Range Oven Igniter Flat Style

1. INTRODUCTION

This manual provides essential information for the safe and effective installation, operation, and maintenance of your Samoser Gas Range Oven Igniter (Flat Style). This component is an aftermarket replacement part designed for various gas range models from brands such as Kenmore, Frigidaire, Tappan, and Gibson. Please read these instructions thoroughly before attempting any installation or repair.

2. SAFETY INFORMATION

WARNING: Risk of Electric Shock, Gas Leak, or Fire.

- Always disconnect power to the appliance at the circuit breaker or fuse box before beginning any service.
- Turn off the gas supply to the appliance at the main shut-off valve before beginning any service.
- Gas appliance repair should only be performed by qualified and experienced technicians. If you are unsure about any step, consult a professional.
- Wear appropriate personal protective equipment, including gloves and eye protection.
- Ensure all gas connections are properly sealed and tested for leaks after installation.
- Keep children and pets away from the work area.

3. PRODUCT OVERVIEW

The Samoser Gas Range Oven Igniter is a critical component responsible for igniting the gas in your oven's burner. This flat-style igniter is designed for durability and reliable performance. It consists of a ceramic heating element housed within a protective metal cage, with two electrical leads for connection.

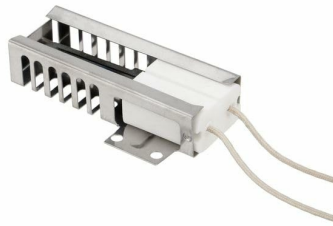


Figure 3.1: Samoser Gas Range Oven Igniter. This image displays the Samoser Gas Range Oven Igniter, a flat-style component designed for gas ovens. It features a ceramic igniter element encased in a metal housing, with two electrical wires extending from one end for connection.



Figure 3.2: Front View. A close-up front view of the Samoser Gas Range Oven Igniter, showing the heating element and its protective metal cage.



Figure 3.3: Angled View. An angled perspective of the igniter, illustrating its compact design and the two connection wires, ready for installation.

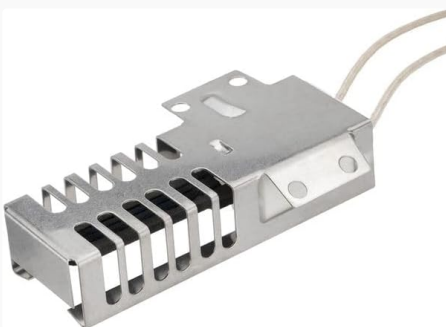


Figure 3.4: Rear View. The rear side of the igniter, revealing the mounting points and the robust construction of the metal bracket.

4. SETUP AND INSTALLATION

Replacing an oven igniter requires careful attention to safety and proper procedures. It is highly recommended that this procedure be performed by a qualified appliance technician. If you choose to proceed, follow these general steps:

1. **Preparation:** Ensure the gas supply to the range is turned off and the appliance is unplugged from the electrical outlet or the circuit breaker is tripped.
2. **Access the Igniter:** Depending on your oven model, you may need to remove the oven door, racks, bottom panel, and/or burner assembly to access the igniter. Refer to your specific oven's service manual for detailed access instructions.
3. **Disconnect Old Igniter:** Carefully disconnect the wiring harness from the old igniter. Note the routing of the wires. Remove any screws or clips securing the old igniter.
4. **Install New Igniter:** Mount the new Samoser igniter in the same position as the old one, using the original screws or mounting hardware. Ensure it is securely fastened.
5. **Connect Wiring:** Connect the new igniter's wires to the oven's wiring harness. Ensure connections are secure and insulated if necessary.
6. **Reassemble:** Reassemble the oven components in reverse order.
7. **Test for Gas Leaks:** Before restoring electrical power, turn on the gas supply and check all connections for leaks using a soapy water solution. Bubbles indicate a leak. Do not proceed if a leak is detected.
8. **Restore Power and Test:** Restore electrical power to the oven. Set the oven to bake at a low temperature and observe the igniter. It should glow brightly and then ignite the gas burner within a few seconds.

Note: This igniter is compatible with many Kenmore, Frigidaire, Tappan, and Gibson gas range models. For specific model compatibility, please refer to the product listing or contact customer support.

5. OPERATING INSTRUCTIONS

The Samoser Gas Range Oven Igniter operates automatically as part of your oven's ignition system. Once installed correctly, its function is integrated into the oven's normal operation:

- When the oven is set to a bake or broil temperature, the control board sends voltage to the igniter.
- The igniter begins to heat up, glowing bright orange.
- As the igniter heats, its electrical resistance decreases, allowing more current to flow.
- Once sufficient current is detected by the oven's safety valve, the valve opens, allowing gas to flow to the burner.
- The hot igniter then ignites the gas, and the burner flame is established.
- The igniter continues to glow as long as the burner is active, acting as a flame sensor to keep the gas valve open.

No manual operation of the igniter itself is required by the user.

6. MAINTENANCE

The Samoser Gas Range Oven Igniter is designed for minimal maintenance. However, periodic inspection of your oven's components can help ensure longevity and safe operation:

- **Visual Inspection:** During routine oven cleaning (with power and gas disconnected), visually inspect the igniter for any signs of damage, cracks, or excessive carbon buildup.
- **Cleaning:** If carbon buildup is observed, gently clean the igniter using a soft brush. Avoid harsh chemicals or

abrasive materials.

- **Wiring:** Check the igniter's wiring for any fraying, burns, or loose connections.

Do not attempt to repair a damaged igniter. Replace it with a new, compatible part if damage is found.

7. TROUBLESHOOTING

If your oven is experiencing issues related to ignition, the igniter may be a contributing factor. Here are some common symptoms and potential solutions:

Symptom	Possible Cause	Solution
Oven not heating / No ignition	Faulty igniter, no gas supply, faulty gas valve, control board issue.	Verify gas supply is on. Check if igniter glows. If not, it may be faulty. If igniter glows but no ignition, it may be weak or the gas valve is faulty. Consult a professional for diagnosis.
Oven takes too long to ignite	Weak igniter, low gas pressure.	A weak igniter may glow but not get hot enough to open the gas valve quickly. Replace igniter. Check gas pressure (requires professional).
Igniter glows, but no flame	Faulty gas valve, igniter not reaching proper temperature, blocked burner ports.	Replace igniter if it's glowing dimly or not getting hot enough. Inspect burner ports for obstructions. Gas valve may be faulty (professional service recommended).

Always ensure power and gas are disconnected before inspecting or replacing parts. If troubleshooting steps do not resolve the issue, contact a qualified appliance repair technician.

8. SPECIFICATIONS

- **Product Type:** Gas Range Oven Igniter (Flat Style)
- **Brand:** Samoser
- **Part Number:** B0GD6TQCDC (ASIN)
- **UPC:** 759524447067
- **Compatibility:** Aftermarket replacement for various gas range models from Frigidaire, Tappan, Kenmore, and Gibson. Specific compatible models include, but are not limited to: 790.71421404, 790.71422404, 790.71424401, 790.71429400, 790.71442601, 790.71451600, 790.71452600, 790.71510400, 790.71510401, 790.71511403, 790.71512400, 790.71512403, 790.71513401, 790.71513403, 790.71513405, 790.71519401, 790.71519403, 790.71520400, 790.71521400, 790.71521401, 790.71522403, 790.71523400.

9. WARRANTY INFORMATION

As an aftermarket replacement part, the warranty for this Samoser Gas Range Oven Igniter is typically provided by the seller. Please refer to your purchase documentation or contact the seller directly for specific warranty terms and conditions. Keep your proof of purchase for any warranty claims.

10. CUSTOMER SUPPORT

For further assistance, compatibility inquiries, or troubleshooting that cannot be resolved using this manual, please contact the seller or manufacturer directly. Provide your product purchase details and any relevant model numbers of your appliance for efficient support.

Seller: CITYBOYLOVE (as per product listing)

For compatibility questions, it is recommended to use the "Ctrl + F" function on the product's online description page to search for your specific oven model number.

