

## Fanttik R11 Pro

# Fanttik R11 Pro Brushless Cordless Mini Reciprocating Saw User Manual

Model: R11 Pro

## 1. INTRODUCTION

---

The Fanttik R11 Pro is a compact, cordless mini reciprocating saw designed for various cutting tasks. Featuring a brushless motor and variable speed control, it offers precision and efficiency for both DIY enthusiasts and professionals. Its ergonomic design and Type-C fast charging enhance user experience and portability.

## 2. SAFETY INFORMATION

---

Always observe basic safety precautions when using electric tools to reduce the risk of fire, electric shock, and personal injury.

- **Wear Eye Protection:** Always wear safety goggles or safety glasses with side shields.
- **Secure Workpiece:** Clamp or secure the workpiece to a stable platform. Do not hold the workpiece by hand or against your body.
- **Maintain Firm Grip:** Hold the tool firmly with both hands during operation.
- **Keep Work Area Clear:** Ensure the work area is well-lit and free of obstructions.
- **Avoid Overreaching:** Maintain proper footing and balance at all times.
- **Blade Contact:** Keep hands and fingers away from the blade during operation.
- **Press Shoe Firmly:** For efficient cutting, firmly press the shoe against the workpiece before starting the cut. This stabilizes the blade, reduces vibration, and prevents the saw from jumping or bogging down.
- **Power Off Before Adjustments:** Always ensure the machine is powered off before touching the saw blade or performing any adjustments.

## 3. PACKAGE CONTENTS

---

Verify that all items are present upon unboxing:

- Fanttik R11 Pro Brushless Reciprocating Saw
- 5 x Jigsaw Blades (HCS/BIM, 6/12/24 TPI)

- Saw Blade Case
- Type-C Charging Cable
- Storage Bag
- User Manual



Image: Contents of the Fanttik R11 Pro package.

## 4. PRODUCT OVERVIEW

---

The Fanttik R11 Pro is designed for ease of use and portability, featuring a compact form factor and advanced functionalities.

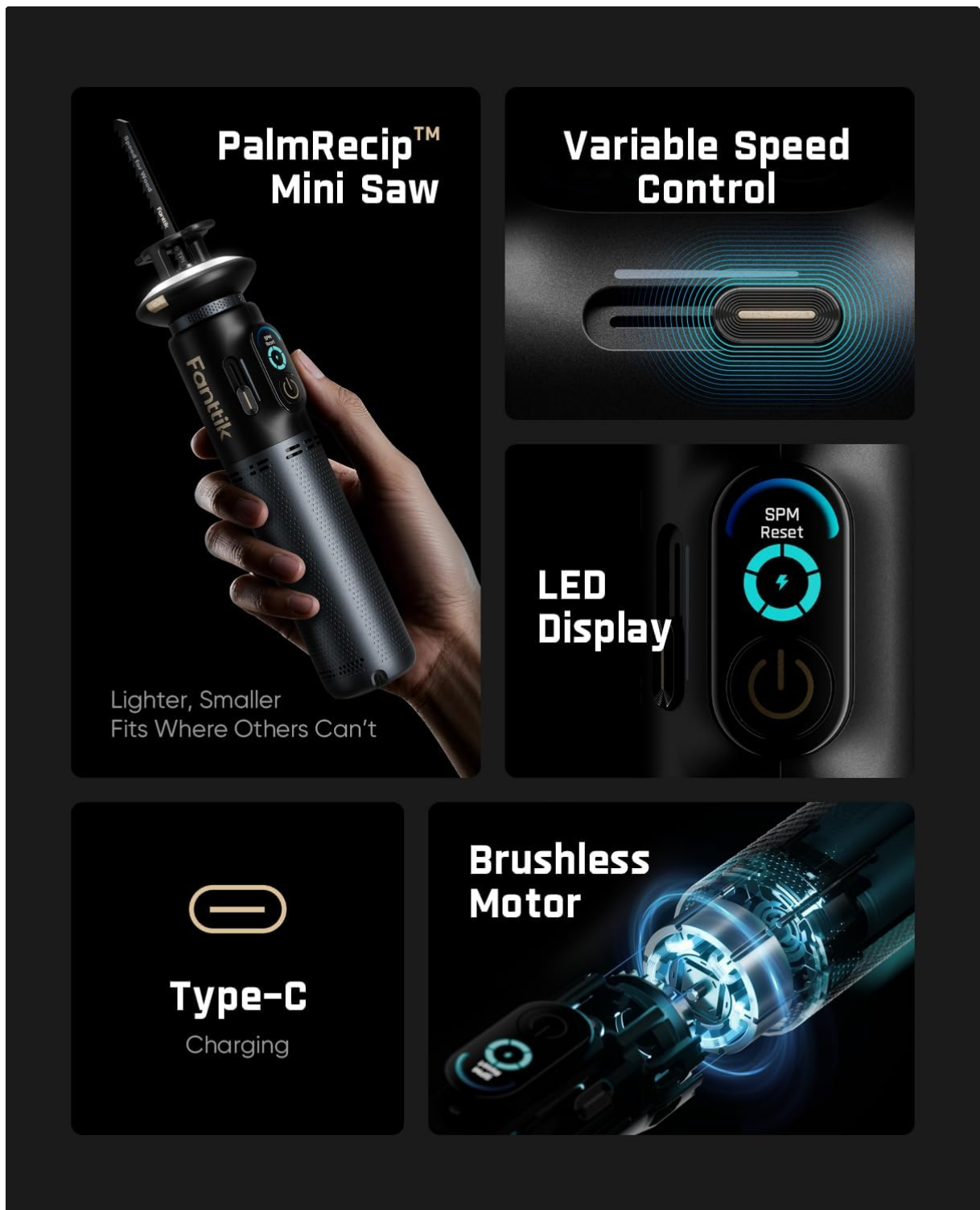


Image: The Fanttik R11 Pro Mini Reciprocating Saw, highlighting its compact size.

### Key Features:

- **PalmRecip™ Mini Saw:** Compact design (8.92 x 2.4 inches) for easy storage and access in tight spaces.
- **Brushless Motor:** Equipped with a 160W brushless motor for strong power and extended lifespan.
- **Variable Speed Control:** 0–2200 SPM stepless speed control for precise cutting across various materials.
- **LED Display:** Gradient LED display shows real-time battery level, stroke speed, and reset alerts.
- **Dual Counterweight System:** Reduces vibration for enhanced comfort and control during operation.
- **Type-C Fast Charging:** Built-in 14.8Wh battery with convenient Type-C charging.
- **Tool-Free Blade Change:** Quick and easy blade replacement.



Image: The R11 Pro's compact design allows it to fit comfortably in the palm.



Image: Illustration of the dual counterweight system for reduced vibration.



Image: The LED display provides real-time information on battery life and stroke speed.

## 5. SETUP

### 5.1 Blade Installation and Change

The R11 Pro features a tool-free blade change system for quick and easy blade replacement.

1. **Step 1:** Press the chuck safety lock and rotate the shoe to open the chuck.
2. **Step 2:** Keep the chuck open and remove the old blade (if applicable). The chuck does not need to be

pressed again.

3. **Step 3:** Insert a new blade into the chuck, then release the shoe.
4. **Step 4:** Ensure the blade is installed firmly before use. Always ensure the machine is powered off before touching the saw blade.

**Warning: Blade ejects automatically during blade change. Always point the blade away from people.**

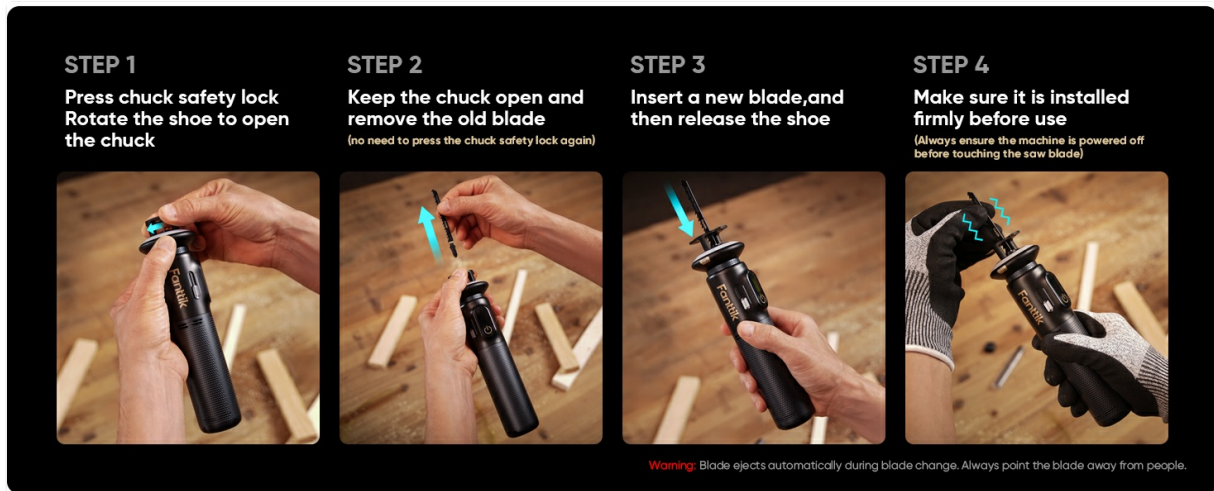


Image: Step-by-step guide for tool-free blade installation.

## 5.2 Charging

The R11 Pro is equipped with a built-in 14.8Wh battery and supports Type-C fast charging.

- Connect the provided Type-C charging cable to the saw's charging port and to a compatible USB power adapter (not included).
- The LED display will indicate the charging status and battery level.
- A full charge typically takes approximately 1.5 hours.



Image: The Type-C charging port for convenient power replenishment.

## 6. OPERATING INSTRUCTIONS

### 6.1 Powering On/Off

To power on the saw, slide the electronic safety lock and press the power button. To power off, release the power button and engage the safety lock.

### 6.2 Adjusting Speed

The saw features a stepless variable speed slide control. Slide the control to increase or decrease the Strokes Per Minute (SPM) from 0 to 2200, allowing you to match the power to the material being cut.



## ADJUST SPEED IN A SLIDE

Infinitely Variable Speed Dial Lets You Match  
Power to Every Material for Perfect Cuts

Image: The variable speed slide control for precise power adjustment.

### 6.3 Cutting Techniques

For optimal performance and safety:

- Always press the shoe firmly against the workpiece before initiating a cut. This stabilizes the blade and reduces vibration.
- Avoid excessive pressure during operation to prevent overheating and ensure a smooth cut.
- While designed for one-handed use, utilize both hands when additional control and stability are required.



## PRECISION AT YOUR FINGERTIP

Infinitely variable speed dial gives you total  
control for cutting wood, metal, and plastic  
with ease

For efficient cutting,  
firmly press the shoe  
against the workpiece  
before starting the cut.

Image: Demonstrating the correct technique of pressing the shoe against the workpiece for precise cuts.



Image: The compact design allows access to confined cutting areas.

## 6.4 Blade Selection for Materials

The R11 Pro comes with five 4-inch jigsaw blades suitable for various materials:

- **6 TPI (Teeth Per Inch):** Ideal for fast cutting of wood.
- **12 TPI:** Suitable for clean cuts in wood and PVC.
- **24 TPI:** Designed for thin and soft metal cutting.

Choose the appropriate saw blade according to the material you are cutting for best results.



Image: Guide to selecting the correct blade type (6 TPI, 12 TPI, 24 TPI) for various materials.

## 6.5 Official Product Video

Video: Official demonstration of the Fanttik R11 Pro in use, showcasing cutting capabilities.

## 7. MAINTENANCE

Regular maintenance ensures the longevity and optimal performance of your Fanttik R11 Pro saw.

- **Cleaning:** After each use, clean the saw body and blade area with a dry cloth to remove dust and debris. Do not use solvents or abrasive cleaners.
- **Blade Care:** Inspect blades for wear or damage before each use. Replace dull or damaged blades promptly to ensure efficient and safe cutting. Store blades in the provided case.
- **Storage:** Store the saw in a dry, secure location, out of reach of children.

## 8. TROUBLESHOOTING

Refer to the following common issues and solutions:

- **Saw Does Not Start:** If the saw does not start after sliding the speed control and the display shows "RESET" with a flashing speed bar and SPM, return the variable speed slide control to the zero position. Ensure the electronic safety lock is disengaged and the power button is pressed. Check battery level and charge if necessary.
- **Overheating:** If the saw feels excessively hot, stop operation immediately. Allow the tool to cool down. Ensure you are not applying excessive pressure during cutting, which can lead to overheating.
- **Reduced Cutting Performance:** Check the blade for dullness or damage. Replace the blade if necessary. Ensure the correct blade type is being used for the material.

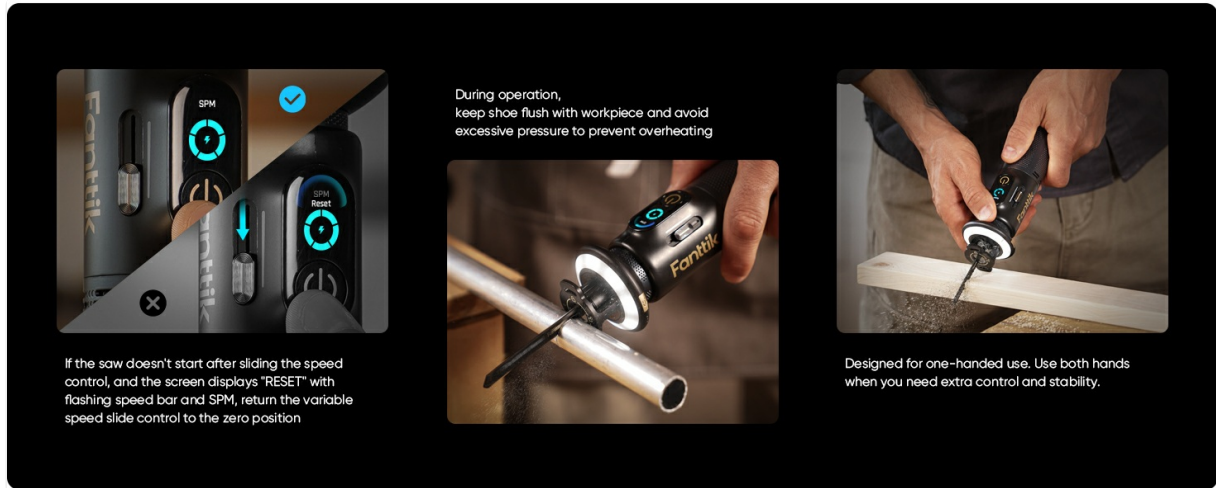


Image: Visual guide for troubleshooting a 'RESET' alert and general operation tips.

## 9. SPECIFICATIONS

Feature	Detail
Brand	Fantik
Model Number	R11 Pro
Color	Black
Power Source	Battery Powered
Wattage	160 watts
Number of Batteries	2 Nonstandard Battery batteries (included)
Blade Material	Bimetallic strip, High Carbon Steel
Number of Teeth	180
Item Dimensions (L x W x H)	8.92"L x 2.4"W x 1"H
Handle Material	Plastic
Surface Recommendation	Wood, PVC
Special Features	Lightweight

Feature	Detail
UPC	199284954397

## 10. WARRANTY AND SUPPORT

---

For warranty information, technical support, or service inquiries, please refer to the official Fanttik website or contact their customer service department. Keep your purchase receipt as proof of purchase for warranty claims.