

[Manuals.plus](#) /

> [aowoka](#) /

> aowoka S24-1 Computer Speakers Instruction Manual

aowoka S24-1

aowoka S24-1 Computer Speakers Instruction Manual

Model: S24-1

INTRODUCTION

Thank you for choosing the aowoka S24-1 Computer Speakers. This USB-powered sound bar is designed to deliver clear stereo sound with versatile connectivity options, including Bluetooth and 3.5mm AUX. It features a multifunctional knob for easy control and integrated RGB lighting effects to enhance your audio experience. Please read this manual carefully to ensure proper setup and operation.

PACKAGE CONTENTS

- aowoka S24-1 Computer Speakers
- Integrated USB-A Power and 3.5mm AUX Audio Cable
- User Manual (this document)

PRODUCT OVERVIEW

Familiarize yourself with the main components of your aowoka S24-1 speakers.

Multifunctional Control Knob

All in One Knob



Volumn+/-



Play/Pause



Light Mode



Conn Method



Image: The control knob allows for volume adjustment, play/pause, light mode switching, and connection mode selection.

- **Long press (2 seconds):** Power On/Off
- **Single click:** Play/Pause audio
- **Double click:** Switch between Bluetooth and AUX connection modes
- **Triple click:** Switch RGB light modes
- **Rotate clockwise/counter-clockwise:** Adjust volume

RGB Lighting Effects

RGB Light Show

6 Vivid Light Colors & 5 Dynamic Light Modes

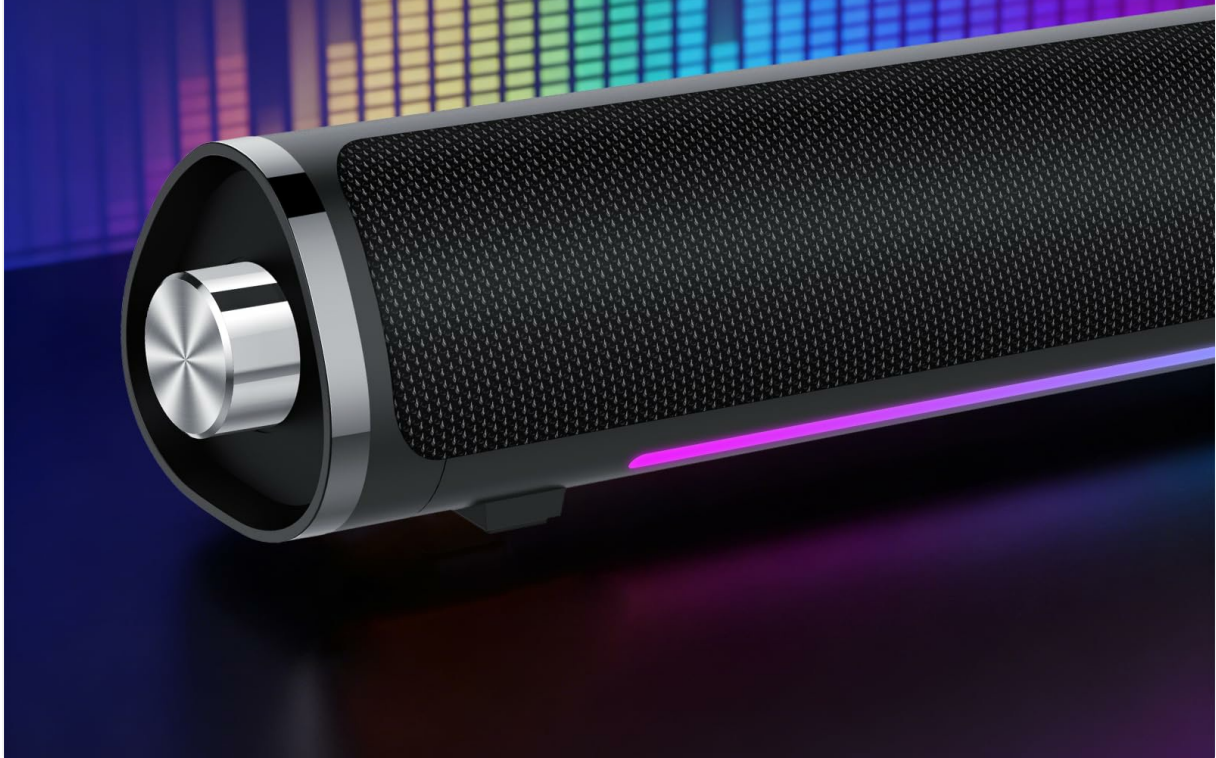


Image: The speaker features 6 vivid light colors and 5 dynamic light modes.

The speaker includes integrated RGB lighting with multiple colors and effects. These can be controlled via the multifunctional knob.

SETUP INSTRUCTIONS

Follow these steps to set up your aowoka S24-1 speakers.

Power Connection

Plug and Play

No drivers or extra setup required.

Note: This computer speaker is powered by USB.



Image: The speaker requires USB power for operation.

1. Locate the integrated USB-A cable.
2. Plug the USB-A connector into an available USB port on your computer, laptop, or a USB power adapter (not included). The speaker requires power to function.

Audio Connection (2 Ways)

2 Ways to Connect

Note: This computer speaker is powered by USB.



 **Bluetooth 5.4**



Image: The speaker supports both 3.5mm AUX and Bluetooth 5.4 connectivity.

Method 1: 3.5mm AUX Connection

1. Ensure the speaker is powered on.
2. Plug the 3.5mm audio jack (integrated with the USB power cable) into the audio output port of your device (e.g., computer, laptop, tablet, smartphone).
3. If the speaker does not automatically switch to AUX mode, double-click the multifunctional knob to select AUX mode.
4. You may need to select the speaker as the audio output device in your computer's sound settings.

Method 2: Bluetooth Connection

1. Ensure the speaker is powered on.
2. Double-click the multifunctional knob to switch to Bluetooth mode. The speaker will enter pairing mode, indicated by a flashing light.
3. On your device (e.g., smartphone, tablet, Bluetooth-enabled computer), go to Bluetooth settings and search for available devices.
4. Select "S24" from the list of devices to pair. Once connected, the speaker will indicate a successful connection, and the light will stop flashing.

Note: The speaker is universally compatible with devices featuring a 3.5mm AUX audio output or Bluetooth

Universal Compatibility

Enjoy enhanced sound on computers, smartphones, tablets and more.



Image: The speaker is compatible with various devices like computers, laptops, tablets, and smartphones.

OPERATING INSTRUCTIONS

Control your aowoka S24-1 speakers using the multifunctional knob.

- **Power On/Off:** Long press the knob for 2 seconds.
- **Volume Control:** Rotate the knob clockwise to increase volume, counter-clockwise to decrease volume.
- **Play/Pause:** Single click the knob to play or pause audio.
- **Switch Connection Mode:** Double click the knob to toggle between Bluetooth and 3.5mm AUX modes.
- **Change Lighting Effects:** Triple click the knob to cycle through the 6 lighting colors and 5 dynamic lighting effects.

MAINTENANCE

To ensure the longevity and optimal performance of your speakers, follow these maintenance guidelines:

- **Cleaning:** Use a soft, dry cloth to wipe the speaker's surface. Do not use liquid cleaners or abrasive materials.
- **Storage:** Store the speakers in a cool, dry place away from direct sunlight and extreme temperatures.
- **Handling:** Avoid dropping the speakers or subjecting them to strong impacts.
- **Water Exposure:** Keep the speakers away from water and high humidity. They are not waterproof.

TROUBLESHOOTING

If you encounter any issues with your aowoka S24-1 speakers, please refer to the following solutions:

Problem	Possible Cause	Solution
No sound from speakers.	<ul style="list-style-type: none"> • Speaker is not powered on. • Volume is too low or muted. • Incorrect audio input mode selected. • Loose cable connection. • Incorrect audio output device selected on computer. 	<ul style="list-style-type: none"> • Long press the knob to power on. • Rotate the knob clockwise to increase volume. • Double-click the knob to switch between AUX and Bluetooth modes. • Ensure USB and 3.5mm AUX cables are securely connected. • Check your device's sound settings and select "aowoka S24-1" as the output.
Bluetooth device cannot connect.	<ul style="list-style-type: none"> • Speaker is not in Bluetooth pairing mode. • Device is too far from the speaker. • Bluetooth is off on your device. • Interference from other devices. 	<ul style="list-style-type: none"> • Double-click the knob to enter Bluetooth pairing mode (light will flash). • Ensure your device is within 10 meters (33 feet) of the speaker. • Enable Bluetooth on your device and search for "S24". • Move away from other wireless devices.
RGB lights are not working or stuck.	<ul style="list-style-type: none"> • Light mode is off or set to a static color. • Power issue. 	<ul style="list-style-type: none"> • Triple-click the knob to cycle through light modes. • Ensure the speaker is properly powered via USB.

SPECIFICATIONS

Brand	aowoka
Model Number	S24-1
Connectivity Technology	Bluetooth 5.4, 3.5mm AUX
Speaker Maximum Output Power	24 Watts
Power Source	USB Powered
Item Dimensions (D x W x H)	2.86"D x 2.7"W x 3.95"H

Material	Plastic
Color	Classic Black

WARRANTY AND SUPPORT

aowoka products are designed for reliability and performance. This product comes with a standard manufacturer's warranty. For detailed warranty information, technical support, or customer service inquiries, please refer to the contact information provided with your purchase or visit the official aowoka website.

Please retain your proof of purchase for warranty claims.