

[Manuals.plus](#) /

› [ZMISHIBO](#) /

› ZMISHIBO 52 Inch Smart Ceiling Fan with Lights - User Manual

## ZMISHIBO PQ52

# ZMISHIBO 52 Inch Smart Ceiling Fan with Lights - User Manual

Model: PQ52

## PRODUCT OVERVIEW

---

The ZMISHIBO 52 Inch Smart Ceiling Fan with Lights (Model PQ52) is designed to provide efficient air circulation and customizable lighting for various indoor spaces. It features a quiet DC motor, 6-speed settings, 3 color temperature LED lighting with dimming capabilities, and smart control via remote or a dedicated mobile application.



*Image: ZMISHIBO 52 Inch Smart Ceiling Fan with Lights, showcasing its modern design.*

## SAFETY INFORMATION

---

Before installation and operation, please read all safety instructions carefully to prevent injury or damage. Keep this manual for future reference.

- Ensure power is disconnected at the circuit breaker before installation or maintenance.
- All wiring must be in accordance with national and local electrical codes.
- Consult a qualified electrician if you are unsure about wiring procedures.
- Mount the fan to a structurally sound ceiling capable of supporting the fan's weight.
- Do not insert objects into the path of the fan blades.

## PACKAGE CONTENTS

---

Verify that all components are present before beginning installation.

- Ceiling Fan Motor Assembly

- Fan Blades (5)
- LED Light Kit
- Remote Control
- Downrods (5-inch and 8-inch)
- Mounting Bracket and Hardware
- User Manual

## SETUP AND INSTALLATION

---

This ceiling fan is designed for hassle-free setup and includes two downrods (5" and 8") to accommodate different ceiling heights. It is compatible with flat ceilings and sloped ceilings up to 15 degrees. An illustrated guide is included in the package for detailed step-by-step instructions. White cotton gloves are provided to prevent smudges during handling.

### Installation Video Guide

Your browser does not support the video tag.

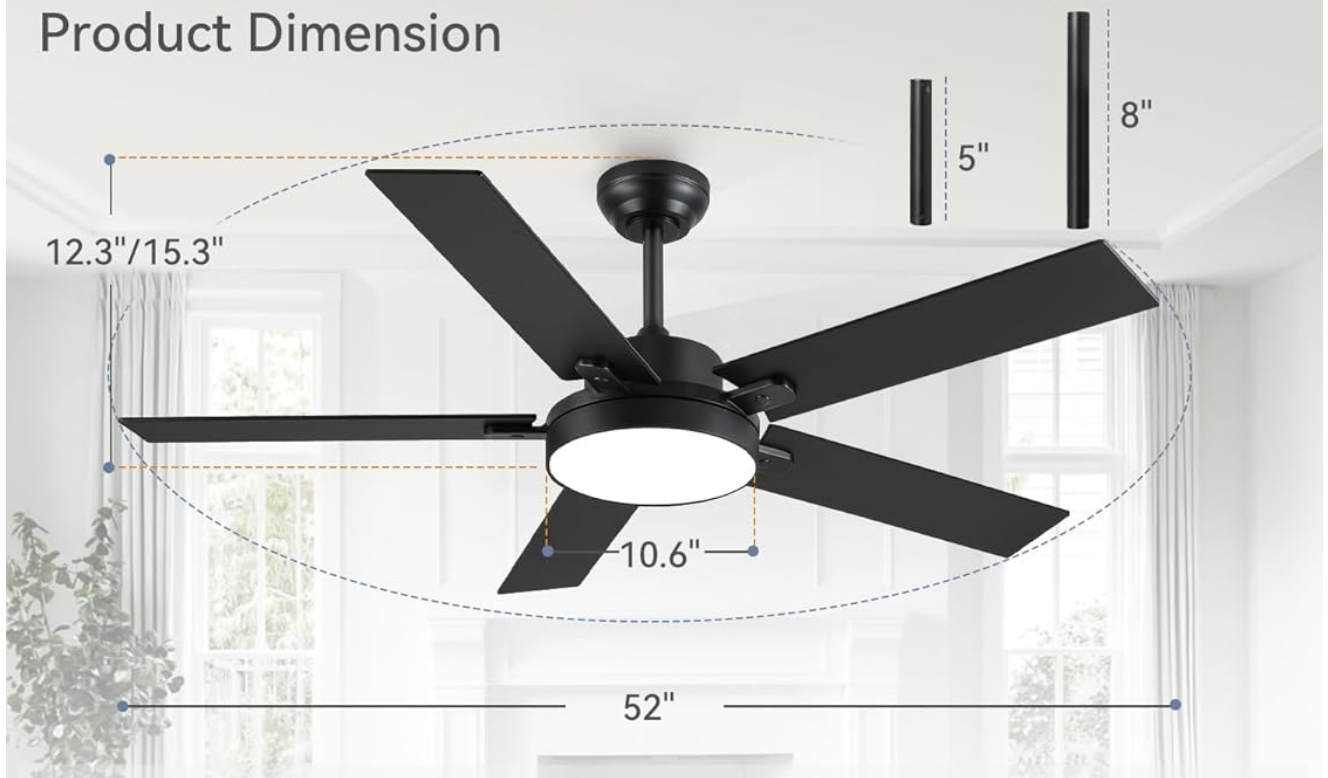
*Video: Official ZMISHIBO installation guide for the 52 Inch Ceiling Fan. This video demonstrates the assembly and mounting process.*

### Ceiling Compatibility and Dimensions



# 52 Inch Ceiling Fan with Lights

## Product Dimension



**Room Size**

Height: 8FT-11FT  
Length & Width:  
15FTx 15FT

Flat Ceiling

Sloped Ceiling ( $\leq 15^\circ$ )

Image: Diagram illustrating the dimensions of the 52-inch ceiling fan and its compatibility with flat and sloped ceilings (up to 15 degrees).

### Blade Installation

## Two Colors Available

Suitable for various styles of rooms



*Image: Close-up view of the fan blades and motor housing, highlighting the high-quality plywood blades and quiet reversible motor.*

The fan features double-sided blades, offering two aesthetic options: a black finish and a wood grain color. Choose the side that best matches your decor during installation.



# Double-Sided Fan Blade

2 Colors in One Blade

Side A: Black



Side B: Wood Grain Color



*Image: Illustration of the double-sided fan blades, showing both the black and wood grain color options.*

## OPERATING INSTRUCTIONS

---

The ZMISHIBO ceiling fan offers versatile control options via a remote control and a smartphone application.

### Remote and App Control

The included remote control and the dedicated app allow you to adjust 6 fan speeds, set 1/4/8-hour timers, reverse blade direction, and control the light independently. The fan features a memory function that restores your last fan speed and light settings after power is restored.



# APP & Remote Control



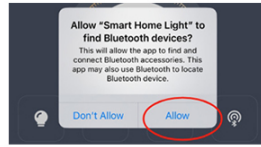
Image: Overview of the ZMISHIBO ceiling fan's smart features, including remote control and smartphone app interface.

## How To Use The APP

### ① Turn on the Bluetooth



### ② Allow this APP to access Bluetooth For iPhone users, Android users can ignore this step

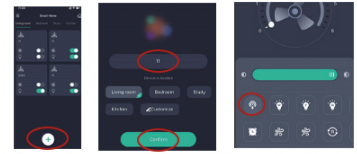


Method 1: Click "Allow" when opening the app for the first time



Method 2: Go to your phone settings's page, find this App and enable Bluetooth access

### ③ Pair the fan with the app



1. Enter the app page and click the plus sign below (Add group).

2. Enter any name, then click Confirm

3. Turn on the fan's power wall switch, once the light is on, press the pairing button within 5s.

The fan light will flash twice to indicate successful pairing

Image: Detailed diagram of the remote control buttons and their functions, including power, fan speed, light control, mute, and timer settings.

## App Pairing Instructions

To use the app control, ensure Bluetooth is enabled on your smartphone. For iPhone users, you may need to grant Bluetooth access to the app in your phone's settings. Follow these steps to pair:

1. Turn on Bluetooth on your phone.
2. Open the app and allow it to access Bluetooth.
3. In the app, enter the app page and click the plus sign to add a group.
4. Enter a name for the fan and confirm.
5. Turn on the fan's power wall switch. Within 5 seconds, press the pairing button on the remote. The fan light will flash twice to indicate successful pairing.

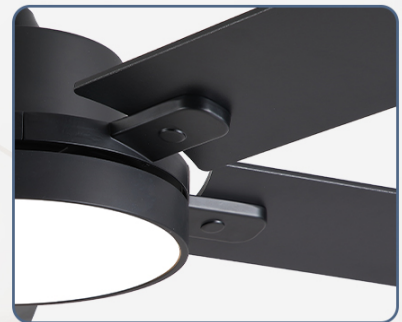
## Details of Ceiling Fans



Quiet Reversible Motor



30W Brighter LED Light



High-Quality Plywood Blades

Image: Step-by-step visual guide on how to enable Bluetooth and pair the ZMISHIBO ceiling fan with its mobile application.

## Fan Speed and Airflow

The fan features a powerful yet quiet DC motor, operating as low as 30dB. It offers 6 adjustable speeds to provide optimal airflow for any occasion.

- **Levels 1-2:** Low Soft Wind
- **Levels 3-4:** Medium Natural Wind
- **Levels 5-6:** High Cooling Wind



*Image: Visual representation of the 6 adjustable wind speeds and their corresponding airflow intensity.*

### **Reversible Air Circulation**

The reversible DC motor allows for year-round use. In summer, the fan provides a downdraft to create a cooling effect. In winter, it can be reversed to an updraft to circulate warm air, helping to reduce energy costs.



# Reversible Air Circulation

Meet the light demand in different scenarios



Image: Diagram illustrating the reversible airflow feature for both summer (downdraft) and winter (updraft) modes.

## Customizable LED Lighting

The integrated 30W LED light offers 3 color temperatures and 10%-100% dimming. Choose from:

- **3000K:** Warm Light
- **4500K:** Natural Light

- **6500K:** Cool White Light

The flicker-free and eye-friendly design ensures comfortable illumination. The light settings are also saved by the memory function.



## 3 Color Temperature & 10%-100% Smooth Dimming



### ◀ Color Temperature Selectable ▶



3000K

4500K

6500K

### ◀ Smooth Dimming ▶



10%

100%

*Image: Visual representation of the three available color temperatures (3000K Warm, 4500K Natural, 6500K Cool White) and the smooth dimming range from 10% to 100%.*

### Timer Function

Set the fan to turn off automatically after 1, 4, or 8 hours using the timer function on the remote or app.

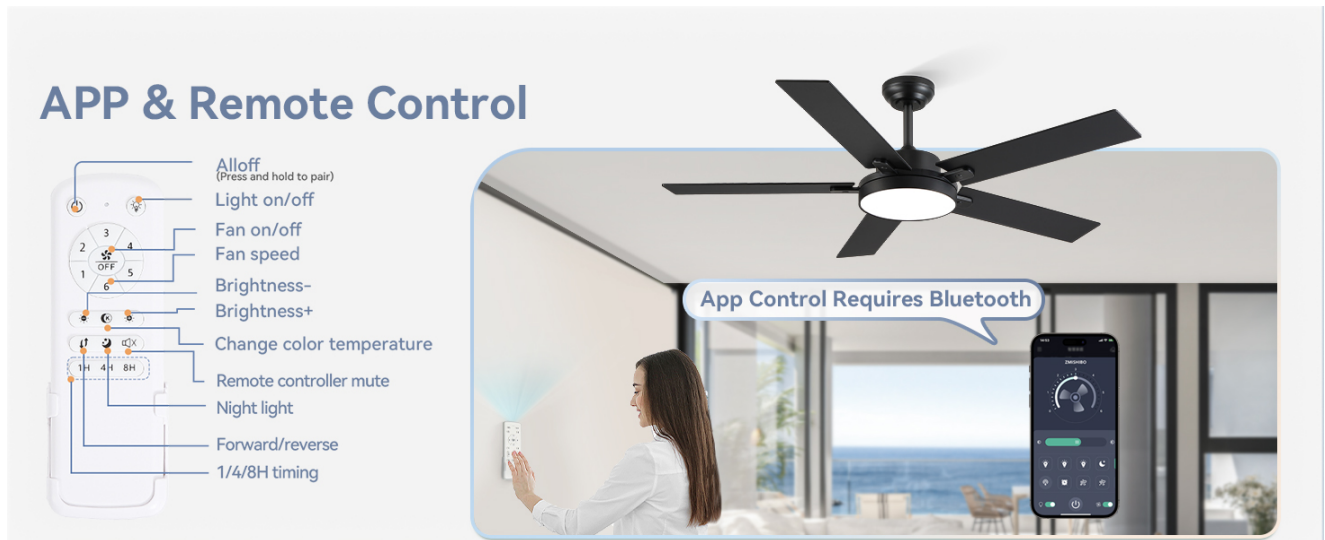


Image: Graphic illustrating the intelligent timing feature with 1-hour, 4-hour, and 8-hour options.

## Product Display Video

Your browser does not support the video tag.

Video: A demonstration of the ZMISHIBO 52 Inch Ceiling Fan with Light, showcasing its various features and operation.

## MAINTENANCE

Regular maintenance ensures optimal performance and longevity of your ceiling fan.

- **Cleaning:** Dust the fan blades and motor housing periodically with a soft, damp cloth. Do not use abrasive cleaners or solvents.
- **Tightness Check:** Periodically check all screws and connections to ensure they are secure.
- **Component Replacement:** All components, including blades, LED module, and remote, are replaceable. Contact customer support for replacement parts.

## TROUBLESHOOTING

If you encounter issues with your ZMISHIBO ceiling fan, refer to the following common problems and solutions:

Problem	Possible Cause	Solution
Fan does not turn on	No power, loose wiring, remote battery dead	Check circuit breaker. Ensure all wiring connections are secure. Replace remote battery.
Light does not work	Loose wiring, LED module issue	Check light kit wiring. Contact support if LED module is faulty.
Remote/App not controlling fan	Remote battery dead, not paired, Bluetooth off	Replace remote battery. Re-pair remote/app (refer to App Pairing Instructions). Ensure phone Bluetooth is on.
Fan wobbles	Loose blades, unbalanced blades, loose mounting	Ensure all blade screws are tight. Check for proper blade balance. Verify mounting bracket is secure.

Problem	Possible Cause	Solution
Fan is noisy	Loose screws, motor issue	Check all screws. If noise persists, contact customer support.

If the problem persists after attempting these solutions, please contact ZMISHIBO customer support.

## SPECIFICATIONS

Feature	Detail
Brand	ZMISHIBO
Model Name	PQ52
Color	Black
Size	52 Inch
Product Dimensions (D x W x H)	52"D x 52"W x 15.3"H
Material	Engineered Wood (Blades)
Electric Fan Design	Ceiling Fan
Power Source	AC/DC
Wattage	75 watts
Motor Type	Brushless DC Motor
Number of Speeds	6
Noise Level	30 Decibels
Number of Blades	5
LED Light	30W, 3 Color Temperatures (3000K, 4500K, 6500K), 10%-100% Dimmable
Control Method	App Control, Remote Control
Special Features	App Operable, LED Light, Quiet Operation, Remote Controlled, Timer, Reversible Motor
Room Type	Bedroom, Home Office, Kitchen, Living Room, Study Room
Indoor/Outdoor Usage	Indoor (and covered outdoor spaces)
Downrod Lengths Included	5 Inches, 8 Inches

## Recommended Room Sizes



*Image: Chart showing recommended room sizes for 42-inch, 52-inch, and 60-inch ceiling fans. The 52-inch model is suitable for rooms up to 15ft x 15ft.*

## WARRANTY AND SUPPORT

---

ZMISHIBO stands behind its products with a comprehensive warranty and dedicated customer support.

- **Motor Warranty:** 5-year support for the DC motor.
- **Parts Warranty:** 2-year support on all other parts (blades, LED module, remote, etc.).

For warranty claims, technical assistance, or replacement parts, please contact ZMISHIBO customer support through the retailer where the product was purchased or visit the official ZMISHIBO website for contact information.

**ZMISHIBO Store:** [Visit the ZMISHIBO Store on Amazon](#)