

## CAMECHO CAMECHO 4+64GB Android 15 Car Stereo

# CAMECHO Android Car Stereo User Manual

For Hyundai Santa Fe (2006-2012)

## 1. PRODUCT OVERVIEW

This manual provides instructions for the CAMECHO 4+64GB Android 15 Car Stereo, designed for Hyundai Santa Fe models from 2006 to 2012 (low-end version, without Canbus). It features a 9-inch InCell 1280x720 touch screen, wireless CarPlay, Android Auto, Bluetooth, GPS, WiFi, FM radio, and includes a backup camera.

### 1.1 Compatible Vehicle Models

This car stereo is specifically designed for Hyundai Santa Fe models manufactured between 2006 and 2012. It is compatible with the low-end version of the original radio system and does not require a Canbus adapter. It is **not compatible** with original radios that have an OEM amplifier or a premium audio system (e.g., Infinity system).



Image 1.1: Compatible Car Models. This image illustrates the dashboard configurations that are compatible with the CAMECHO car stereo, specifically for Hyundai Santa Fe 2007-2012 models. It also clearly indicates incompatible setups, such as those with OEM amplifiers or Infinity premium audio systems.

## 1.2 Packing List

Verify that all components are present in the package before beginning installation:

- 1 x Android Car Stereo
- 1 x AHD Rear Camera
- 1 x External Microphone
- 1 x GPS Antenna
- 1 x Radio Antenna
- 3 x Power Cables
- 1 x Rear Camera Input Cable
- 1 x RCA Cable
- 2 x USB Cables
- 1 x Accessories Set
- 1 x Installation Tool
- 1 x Instruction Manual (this document)



Image 1.2: Packing List and Dimensions. This image displays the physical dimensions of the head unit and a visual representation of all the cables and accessories included in the product package, such as the AHD rear camera, power cables, GPS antenna, and USB cables.

## 2. SETUP AND INSTALLATION

Before starting the installation, ensure the vehicle's power is off and the battery is disconnected to prevent electrical damage.

### 2.1 Disassembly of Original Radio

1. Use a pry tool to carefully remove the trim panel around the original radio.
2. Unscrew the securing screws for the overhead storage compartment and remove it.
3. Unscrew the screws securing the bottom of the original car stereo and remove it.
4. Disconnect all wiring harnesses connected to the original car stereo.

5. Unscrew the screws fixing the air-conditioning outlets on the left and right sides.
6. Pry open the fixed buckles and remove them from the original car radio panel.
7. Remove the emergency button and air recirculation mode button from the panel.



Image 2.1: Disassembly Process. This image provides a visual guide for safely removing the existing car stereo and associated panels from the Hyundai Santa Fe dashboard.

## 2.2 Installation of New Stereo

1. Install the left and right air conditioning vents onto the new radio.
2. Tighten the 3 screws to secure each vent.
3. Make the wiring harness connections between the new radio and the original car.
4. Reinstall the new radio into the original car.
5. Tighten the 2 screws at the bottom.
6. Install the emergency button and air recirculation mode button back on the button card board.
7. Connect the emergency button and other three buttons to the wires of the original car.
8. Then install them back to the original car.
9. Reinstall the storage compartment into the original car and tighten the 2 screws to secure it.
10. Reconnect the trim panel and the wiring harness into the original car, then reinstall it.
11. The installation of the new radio is complete.





Image 2.2: Installation Process. This image provides a visual guide for installing the new CAMECHO car stereo, including connecting wiring harnesses and reassembling dashboard components.

## 2.3 Backup Camera Wiring

The Android car stereo is equipped with a 720P AHD rear view camera. Proper wiring ensures automatic display of the reversing image when reversing.

1. Connect the red wire (positive) of the camera power cable to the positive pole of the car's reversing light.
2. Connect the black wire (negative) of the camera power cable to the negative pole of the car's reversing light.
3. The reversing trigger is controlled by the stereo; no separate connection is required for this.
4. Ensure the white plug from the camera input cable is connected to the main device for proper Bluetooth and WiFi signals.

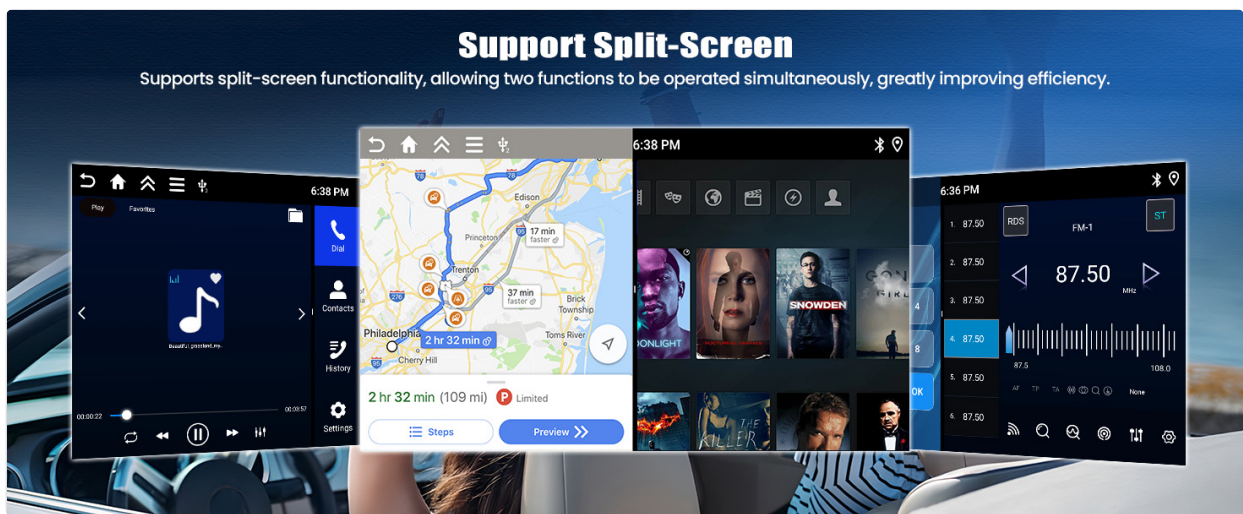


Image 2.3: Reversing Camera Installation. This diagram details the wiring steps for the AHD rear camera, including connecting to the vehicle's reverse lights and ensuring the camera input cable is properly connected to the head unit.

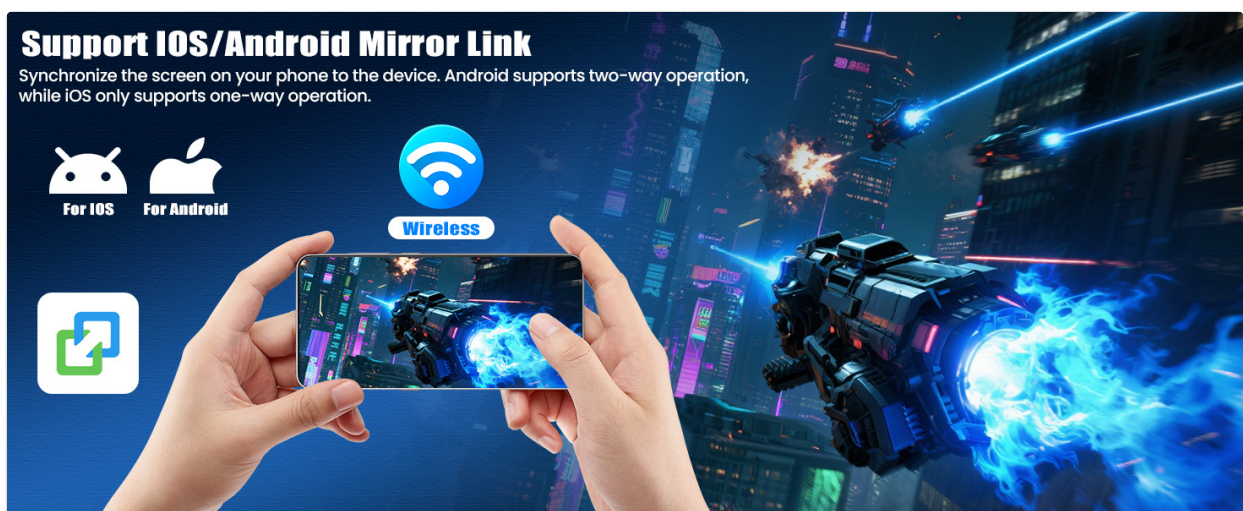


Image 2.4: Installation Display. This image provides a visual comparison of the car's dashboard before and after the installation of the CAMECHO Android car stereo, demonstrating the integrated appearance.

### 3. OPERATING INSTRUCTIONS

#### 3.1 Wireless Apple CarPlay Connection

CarPlay integrates your iPhone with the car stereo, allowing access to navigation, music, calls, and messages safely while driving.

1. Open the 'S-Play' application on the car stereo.
2. Connect your iPhone's Bluetooth to the car stereo. The Bluetooth name is typically 'BLINK\_UNW2652' and the PIN is '1234'. Ensure both phone audio and media audio are connected.
3. On the car stereo, click 'SpeedPlay'.
4. Allow Contacts and Favorites Sync on your iPhone if prompted.
5. Confirm 'Use CarPlay' with 'SpeedPlay' on your iPhone.
6. Wait for the connection to establish. The first connection may take slightly longer.

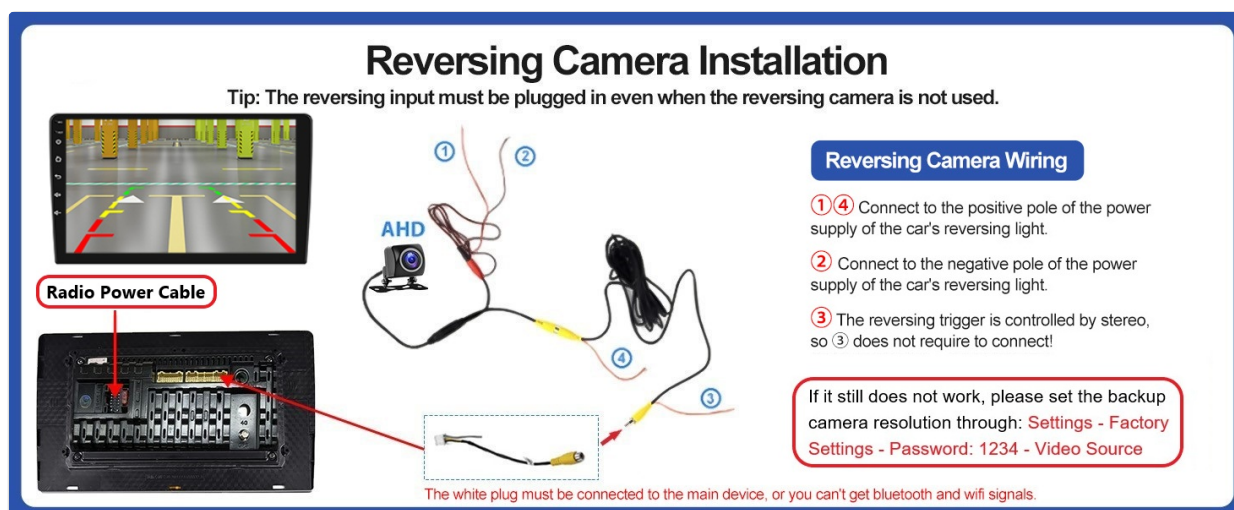


Image 3.1: Wireless Apple CarPlay Connection. This image illustrates the process of connecting an iPhone to the car stereo for wireless CarPlay functionality, including Bluetooth pairing and interface prompts.

#### 3.2 Wireless Android Auto Connection

Android Auto integrates your Android phone with the car stereo, providing access to navigation, communication, and entertainment features.

1. Open the 'S-Play' application on the car stereo.
2. Connect your Android phone's Bluetooth to the car stereo. The Bluetooth name is typically 'BLINK\_UNW2652' and the PIN is '1234'.
3. On the car stereo, click 'SpeedPlay'.
4. Connect your phone to the rear 4-pin USB port with the original data cable.
5. Allow USB debugging on your phone if prompted.
6. Wait for the connection to establish. The first connection may take slightly longer.

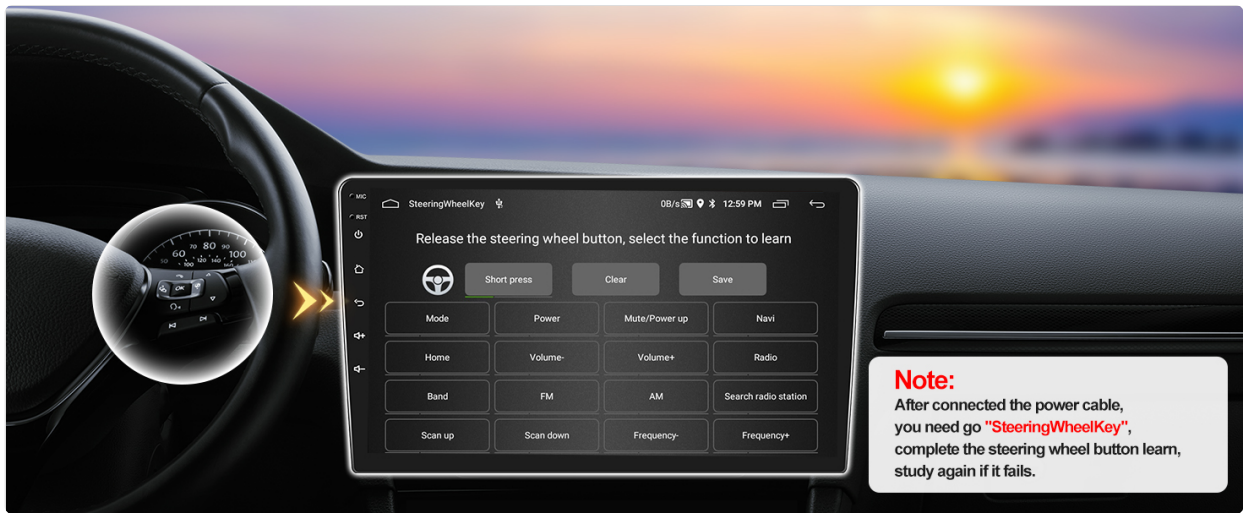


Image 3.2: Wireless Android Auto Connection. This image illustrates the process of connecting an Android phone to the car stereo for wireless Android Auto functionality, including Bluetooth pairing and interface prompts.

Your browser does not support the video tag.

Video 3.1: Wireless CarPlay and Android Auto Connection. This video demonstrates the steps to connect your smartphone to the CAMECHO car stereo using both Wireless CarPlay and Android Auto features, showcasing the user interface and interaction.

### 3.3 GPS Navigation & WiFi Connectivity

The head unit includes a built-in WiFi/Hotspot module, allowing you to download various applications and access online maps. It also supports offline maps via the 'Here WEGO' app.

- Connect to your mobile phone's hotspot or a local WiFi network via the settings menu.
- Access online navigation apps like Google Maps or Waze.
- For offline navigation, download maps for your desired country within the 'Here WEGO' application.



Image 3.3: Online & Offline Navigation. This image displays the navigation interface of the car stereo, highlighting its capability to support both online mapping services and offline maps through applications like Here WeGo.





Image 3.4: WiFi Hotspot Connection. This image demonstrates the car stereo's ability to connect to a WiFi hotspot, enabling access to online content, app downloads, and internet browsing directly from the head unit.

### 3.4 Bluetooth 5.0

The built-in Bluetooth 5.0 module supports hands-free calling and wireless music streaming.

- Pair your phone via Bluetooth settings to make and receive calls directly from the stereo.
- Stream audio from your phone to the car stereo wirelessly.
- The external microphone ensures clear voice pickup during calls.



Image 3.5: Bluetooth Functionality. This image illustrates the Bluetooth features of the car stereo, including hands-free calling and wireless audio streaming, enhancing convenience and safety during driving.

### 3.5 FM/RDS Radio

Enjoy quality FM radio with RDS (Radio Data System) functionality.

- Tune into your favorite FM stations.
- RDS provides additional information such as station name and song title where available.



Image 3.6: FM RDS Radio. This image showcases the FM radio interface with RDS display, allowing users to view station information and enjoy clear radio reception.

### 3.6 Steering Wheel Control (SWC)

The stereo is compatible with your original steering wheel control buttons, allowing you to manage audio and calls without taking your hands off the wheel.

- After connecting the power cable, navigate to 'SteeringWheelKey' in the settings.
- Follow the on-screen instructions to learn and map your steering wheel buttons to the stereo functions.
- If the learning process fails, repeat the steps.



Image 3.7: Steering Wheel Controls. This image illustrates the interface for programming and utilizing the original steering wheel controls with the CAMECHO car stereo, enhancing driving convenience.

### 3.7 Split Screen Function

The split-screen feature allows you to run two applications simultaneously, improving efficiency.

- Activate split-screen mode from the recent apps menu or by long-pressing an app icon.
- Select two applications to display side-by-side, for example, navigation and music.





Image 3.8: Support Split-Screen. This image demonstrates the split-screen functionality, allowing users to operate two applications concurrently on the car stereo display, such as navigation and music playback.

### 3.8 iOS/Android Mirror Link (Jlink)

Mirror Link allows you to display your phone's screen on the car stereo. Android supports two-way operation, while iOS supports one-way operation.

1. Open the 'Jlink' application on the car stereo.
2. Connect your mobile phone's hotspot to the car stereo via WiFi settings.
3. For the first-time connection, click the provided link in the Jlink app to download the mobile client and scan the QR code.
4. On your mobile phone, open the Jlink app and initiate screen casting.



Image 3.9: iOS/Android Mirror Link. This image demonstrates the Mirror Link feature, allowing users to cast their smartphone screen onto the car stereo display for enhanced content viewing and interaction.

## 4. SPECIFICATIONS

Feature	Specification
---------	---------------

Feature	Specification
Product Dimensions	36 x 5 x 22.6 cm; 1.3 kg
Display Size	9 Inches
Display Resolution	1280 x 720P HD
Touch Screen Type	InCell Capacitive
Operating System	Android 15
Memory (RAM)	4GB
Storage (ROM)	64GB
Special Features	Android Auto, Apple CarPlay, Bluetooth 5.0, GPS, WiFi, FM/RDS Radio, AHD Backup Camera, Steering Wheel Control, Split Screen, Mirror Link
Connectivity Technology	Bluetooth, Wi-Fi
Map Type	Worldwide (supports offline maps via Here WEGO)
Compatible Devices	For Hyundai Santa Fe 2006-2012 (Low-End Version, Without Canbus)
Manufacturer	CAMECHO
Country of Origin	China



Image 4.1: 9-Inch HD InCell Touchscreen. This image details the display technology, including its 1280x720 HD resolution, InCell design, and 68% light transmittance for clear and vibrant visuals.

## 5. MAINTENANCE

---

To ensure the longevity and optimal performance of your CAMECHO car stereo, follow these general maintenance guidelines:

- **Cleaning:** Use a soft, dry cloth to clean the screen and exterior. Avoid abrasive cleaners or solvents.
- **Software Updates:** Periodically check for available software updates to ensure you have the latest features and bug fixes. Refer to the device settings or manufacturer's website for update procedures.
- **Environmental Conditions:** Avoid exposing the unit to extreme temperatures, direct sunlight for prolonged periods, or excessive moisture.

## 6. TROUBLESHOOTING

---

If you encounter issues with your car stereo, consider the following common troubleshooting steps:

- **No Power:** Check all power connections and fuses. Ensure the vehicle's ignition is on.
- **No Sound:** Verify speaker connections, volume levels, and audio source selection. Check if the mute function is active.
- **Bluetooth/CarPlay/Android Auto Connection Issues:** Ensure Bluetooth is enabled on both devices. Forget and re-pair the device. For CarPlay/Android Auto, ensure the correct app is open and permissions are granted.
- **Backup Camera Not Displaying:** Check the camera's power and video signal connections. Ensure the reversing trigger wire is correctly connected. If still not working, try adjusting the backup camera resolution through: *Settings > Factory Settings > Password: 1234 > Video Source*
- **Touch Screen Unresponsive:** Try restarting the unit. If the issue persists, a factory reset might be necessary (note: this will erase all user data).
- **GPS Signal Loss:** Ensure the GPS antenna is properly installed and has a clear view of the sky.

For persistent issues, contact customer support.

## 7. WARRANTY AND SUPPORT

---

### 7.1 Warranty Information

The CAMECHO car stereo comes with a **1-Year Warranty** from the date of purchase. Please retain your proof of purchase for warranty claims.

### 7.2 Customer Support

For technical assistance, warranty inquiries, or any other support needs, please contact CAMECHO customer service:



- **Email:** [yanningqiu2021@163.com](mailto:yanningqiu2021@163.com)
- **Online Store:** Visit the [CAMECHO Store on Amazon](#) for more product information and support resources.

© 2025 CAMECHO. All rights reserved.