

GOYOJO NV075-50

GOYOJO 1080P Digital Night Vision Scope Instruction Manual

Model: NV075-50

1. INTRODUCTION

The GOYOJO 1080P Digital Night Vision Scope is designed to provide clear visibility in both day and night conditions. Featuring high-definition resolution and an OLED HD display, this monocular offers versatile functionality for various outdoor activities. It includes capabilities for capturing photos and videos, adjustable infrared illumination, and flexible magnification.

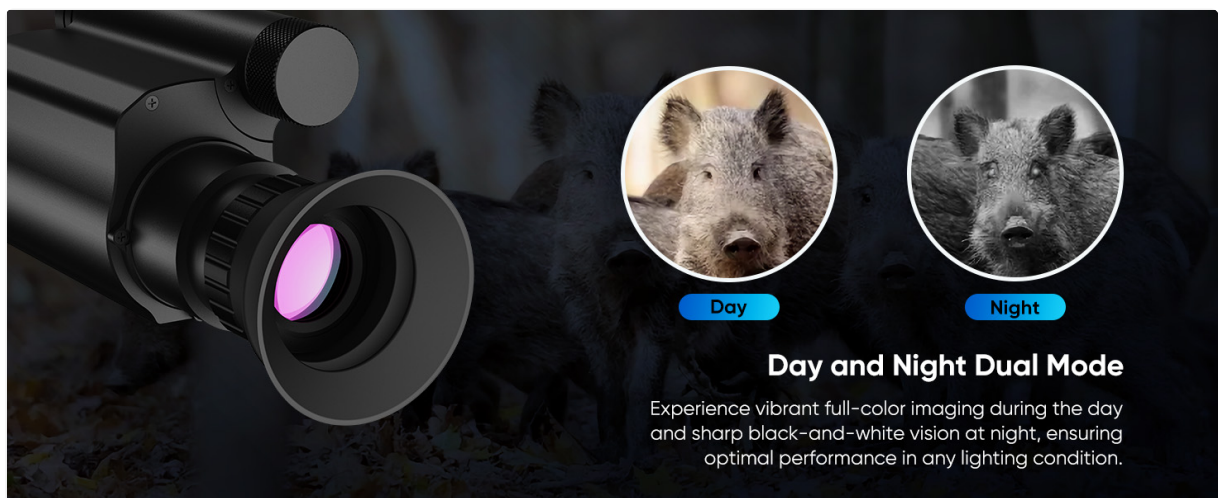


Figure 1: Overview of the GOYOJO Digital Night Vision Scope, showcasing its design and primary features.

2. SETUP

2.1 Component Identification

Familiarize yourself with the main components of your night vision scope:

- **Eyepiece:** For viewing the display.
- **Objective Lens:** The front lens that gathers light.
- **IR Illuminator:** Provides infrared light for night vision.
- **Control Buttons:** For power, menu, zoom, IR adjustment, and photo/video capture.
- **Battery Compartment:** Houses the rechargeable battery.

- **Micro SD Card Slot:** For storing captured media.



Figure 2: The GOYOJO Digital Night Vision Scope, illustrating its main components and controls.

2.2 Battery Installation

The device uses a rechargeable battery. Ensure the battery is fully charged before first use. To install:

1. Unscrew the battery compartment cap located on the side of the device.
2. Insert the provided rechargeable battery with the positive pole facing inward.
3. Securely screw the battery compartment cap back on.

2.3 Mounting the Scope

The scope includes a mounting bracket for attachment to a standard Picatinny rail. To attach the bracket:

1. Align the bracket with the screw holes on the underside of the night vision device.
2. Use the provided screws and wrench to secure the bracket firmly.
3. Attach the assembled scope to your rifle's Picatinny rail, ensuring a secure fit.



Figure 3: Side view of the night vision scope, showing the mounting bracket attachment points.

3. OPERATING INSTRUCTIONS

3.1 Power On/Off

To power on the device, short press the power button. To power off, long press the power button until the screen turns off.

3.2 Focusing the Scope

Achieving a clear image involves two main adjustments: the eyepiece diopter and the objective lens.

1. **Eyepiece Diopter Adjustment:** Rotate the eyepiece diopter ring (the part closest to your eye) until the display's crosshair and menu text appear sharp and clear. This compensates for individual eyesight differences.
2. **Objective Lens Adjustment:** Once the diopter is set, aim at your target and rotate the objective lens adjustment ring (the front lens) until the target image is clear. If the image is blurry, try rotating the objective lens in the opposite direction until clarity is achieved.

Your browser does not support the video tag.

Video 1: Demonstrates the correct procedure for focusing the eyepiece diopter and objective lens for optimal image clarity.

3.3 Day and Night Modes

The scope automatically switches between full-color day mode and black-and-white night mode. In low light conditions, the IR illuminator can be activated for enhanced visibility.



Figure 4: Illustrates the visual difference between day (full color) and night (black and white) modes.

3.4 Infrared (IR) Illuminator Adjustment

The built-in 850nm IR illuminator provides three adjustable brightness levels to suit varying light conditions in total

darkness. Short press the IR button to cycle through the levels (1, 2, 3, and Off).

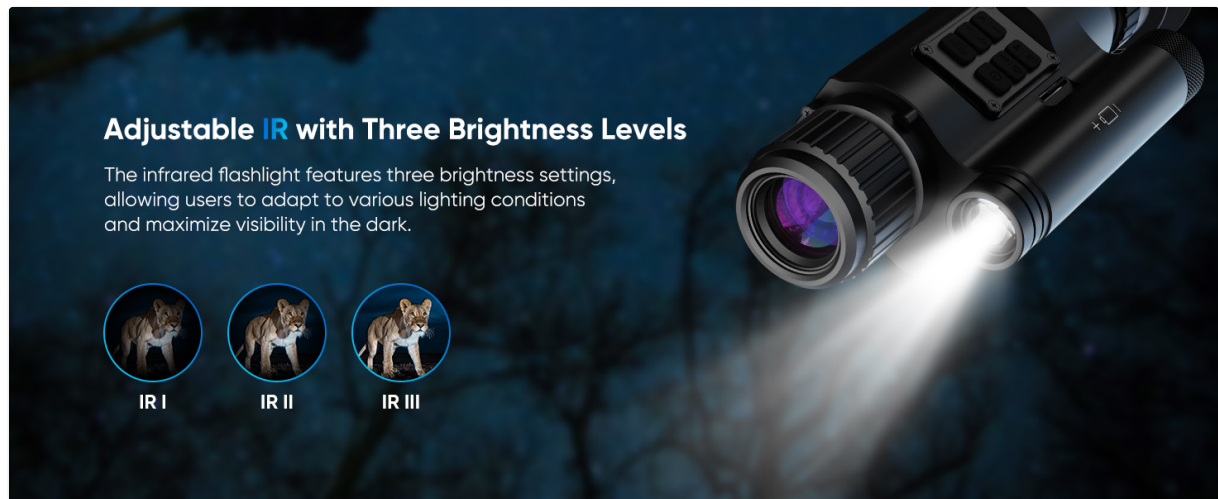


Figure 5: Shows the three adjustable IR brightness levels and their effect on night vision clarity.

3.5 Magnification

The scope features 4X magnification. Use the '+' and '-' buttons to adjust the digital zoom levels. The 22.4° field of view allows for both wide area scanning and detailed observation.

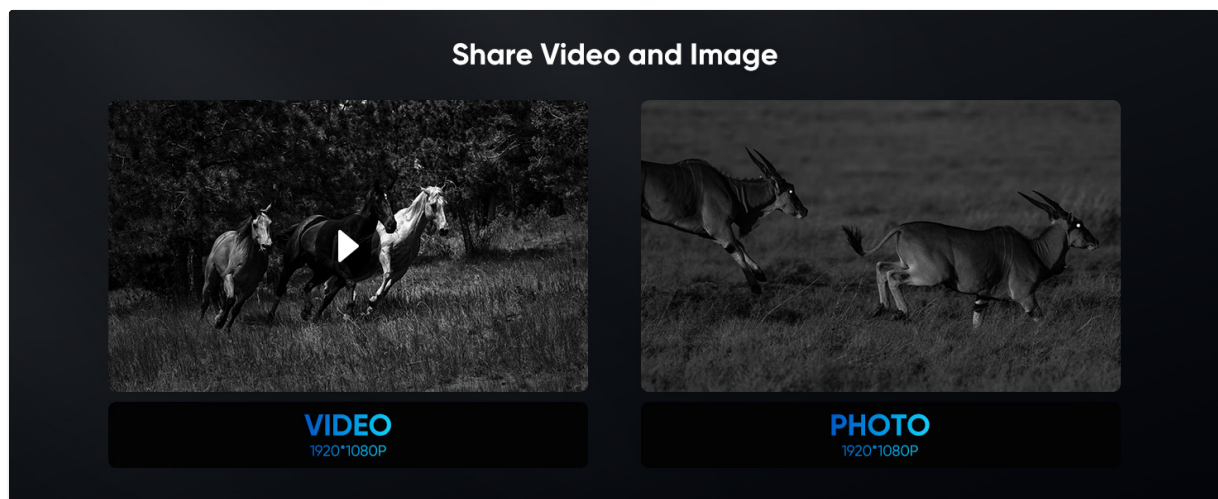


Figure 6: Demonstrates the 4X magnification capability and wide field of view of the scope.

3.6 Photo and Video Capture

The scope can record 1080P videos and capture photos. Ensure a Micro SD card is inserted into the slot. Use the dedicated photo/video button to initiate capture.



Figure 7: Illustrates the ability to capture both video and still images with the night vision scope.

3.7 Menu Navigation and Crosshair Adjustment

Long press the 'MENU' button to access the settings menu. Use the navigation buttons to scroll through options like exposure, contrast, language, crosshair type, and crosshair color. The scope offers multiple crosshair types and four color options (Red, Green, Black, White).

Your browser does not support the video tag.

Video 2: Demonstrates how to navigate the menu and adjust the crosshair settings, including type and color.



Figure 8: Displays the four customizable reticle colors available for selection.

4. MAINTENANCE

4.1 Cleaning

To maintain optimal performance, keep the lenses and body of the scope clean. Use a soft, lint-free cloth to wipe the exterior. For lenses, use a specialized lens cleaning solution and cloth to avoid scratches.

4.2 Storage

Store the night vision scope in a cool, dry place away from direct sunlight and extreme temperatures. Remove the battery if storing for extended periods.

5. TROUBLESHOOTING

If you encounter issues with your GOYOJO Digital Night Vision Scope, refer to the following common solutions:

- **No Power:** Ensure the battery is fully charged and correctly inserted. Check for any plastic insulators

preventing contact.

- **Blurry Image:** Adjust the eyepiece diopter and objective lens until the image is clear.
- **IR Not Working:** Check if the IR illuminator is turned on and cycle through the brightness levels. Ensure the battery has sufficient charge.
- **Recording Issues:** Verify that a Micro SD card is properly inserted and has available storage space.

For further assistance, please contact GOYOJO customer support.

6. SPECIFICATIONS

Feature	Specification
Brand	GOYOJO
Model	NV075-50
Color	1080P Scope
Item Weight	0.79 Kilograms
Material	Aluminum
Magnification Maximum	4 x
Objective Lens Diameter	32 Millimeters
Magnification Minimum	4 x
Compatible Devices	Camera
Night vision	Yes
Field Of View	22.4 Degrees

7. WARRANTY AND SUPPORT

7.1 Warranty Information

The GOYOJO Digital Night Vision Scope comes with a 1-year warranty from the manufacturer. Please retain your proof of purchase for warranty claims.

7.2 Customer Support

For technical support, troubleshooting, or warranty inquiries, please visit the official GOYOJO website or contact their customer service directly. Refer to your product packaging for specific contact details.