

[Manuals.plus](#) /

> [CAMECHO](#) /

> CAMECHO 4+64GB Android 15 Car Stereo User Manual for Chevrolet GMC Sierra/Chevy Silverado 2014-2018

CAMECHO 4+64GB Android 15 Car Stereo

CAMECHO 4+64GB Android 15 Car Stereo User Manual

For Chevrolet GMC Sierra/Chevy Silverado 2014-2018

INTRODUCTION

This manual provides detailed instructions for the installation, operation, and maintenance of your CAMECHO 4+64GB Android 15 Car Stereo. Please read this manual thoroughly before installation and use to ensure proper function and to maximize your experience with the device. Keep this manual for future reference.

VEHICLE COMPATIBILITY

This car stereo is specifically designed for the following vehicle models:

- Chevrolet Silverado 1500 (2014-2018)
- Chevrolet Silverado 2500 (2014-2018)
- Chevrolet Silverado 2500 HD (2014-2018)
- Chevrolet Silverado 3500 (2015-2018)
- Chevrolet Silverado 3500 HD (2014-2018)
- GMC Sierra (2014-2018)
- GMC Sierra 1500 (2014-2018)
- GMC Sierra 2500 HD (2014-2018)
- GMC Sierra 3500 HD (2014-2018)

Important Note: This unit is **not compatible** with vehicles equipped with an original Bose Audio System or an optical fiber power cable (power cable with only 2 cables).



Image illustrating the CAMECHO car stereo installed in a compatible Chevrolet Silverado dashboard, highlighting the applicable car models and years.

PACKING LIST

Before proceeding with installation, please verify that all components are present in the package:

- 1 x Android Head Unit
- 1 x AHD Backup Camera
- 1 x External Microphone
- 1 x Small Horn
- 1 x Astern Adapter Cable
- 2 x Direction Control Adapter Cable
- 1 x Installation Tool
- 1 x Instruction Manual
- 1 x Dupont Wire
- 2 x USB Cable
- 1 x Original USB Cable
- 1 x Rear Camera Input Cable
- 1 x Protocol Box
- 1 x GPS Antenna
- 1 x Radio Antenna
- 1 x Power Cable
- 1 x RCA Cable

Backup Camera & SWC

Equip with a rear view camera and support steering wheel control function, both can improving your driving safety.



Image displaying the dimensions of the head unit and a comprehensive visual list of all components included in the package.

SETUP AND INSTALLATION

Before beginning the installation, ensure the vehicle's power is disconnected to prevent electrical damage. It is recommended to prepare tools such as a plastic pry tool and a screwdriver.

Disassembly of Original Radio

1. Use a pry bar to carefully open the outer frame of the original car radio.
2. Use a screwdriver to unscrew the four screws securing the original radio.
3. Gently pull out the wires connected to the original car radio.
4. Use a pry bar to open the air-conditioning button board on the original car radio panel.
5. Unscrew the two screws fixing the left and right sides of the CD player.
6. Pull out the wires connected to the original CD player.
7. Unplug the cable connecting the host to the original car, then remove the host unit.

New Radio Installation

1. Connect the wiring harness and protocol box of the new radio. If the wiring harness does not match, contact customer service for the correct wiring harness.
2. Install the air-conditioning button panel to the new radio panel.
3. Install the new radio, tightening the four fixing screws on the left and right sides.
4. Install the radio frame.

Disassembly:

- ① Use a pry bar to pry open the outer frame of the original car radio, then use a screwdriver to unscrew the 4 screws that fix the original car radio, and pull out the wires connected to the original car.



- ② Use a pry bar to pry open the air-conditioning button board on the original car radio panel, then unscrew the 2 screws fixing the left and right sides of the CD player, and pull out the wires connected to the original car.



- ③ Unplug the cable connecting the host to the original car, and then remove the host.

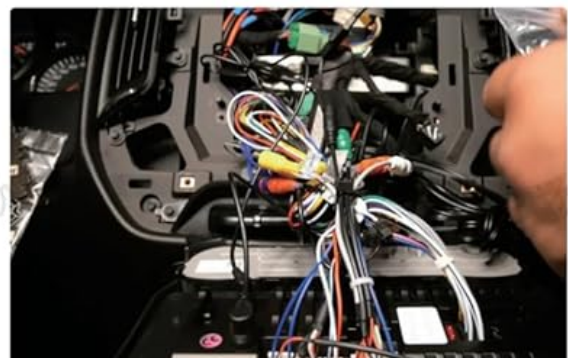


PROPOSE

Before starting the replacement job, you should prepare tools such as a plastic pry tool and a screwdriver, and make sure the car's power is cut off during the installation.

Installation (If the wiring harness does not match, please contact customer service to request the correct wiring harness)

- ① Install the air conditioning button panel to the new radio panel, Connect the wiring harness and protocol box of the new radio. Then install the new radio, tighten the four fixing screws on the left and right sides, and install the radio frame. At this point, the new radio installation is completed.





Visual instructions for removing the factory radio and installing the new CAMECHO head unit.

Wiring Connections

Ensure all cables are securely connected as per the diagrams below.

CANBUS Box Connection

Confirm that the CANBUS box is connected. After connecting, you may need to set the protocol correctly for steering wheel controls to function. Navigate to **Car Settings > Factory (Password: 1234) > CarType Setting**, then choose **Xinput - Chevrolet - Silverado - 2012-2019** for your vehicle.

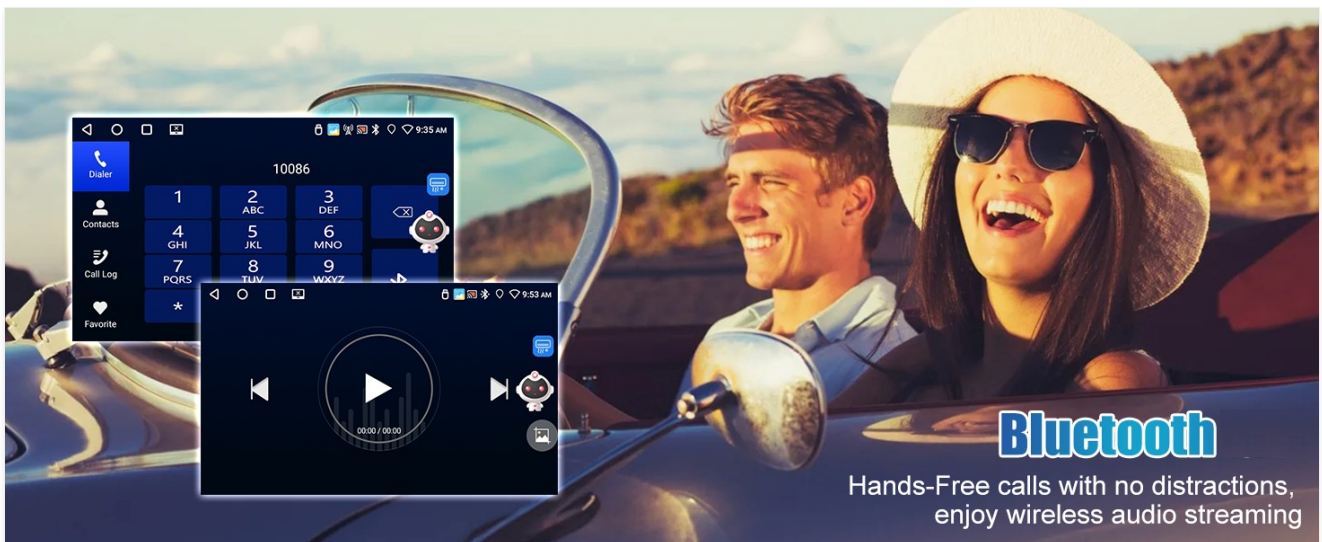


Diagram showing CANBUS box connection and steps for configuring steering wheel controls.

Reversing Camera Installation

The reversing input must be plugged in even if a reversing camera is not used.

- Connect the positive pole of the power supply of the car's reversing light.
- Connect to the negative pole of the power supply of the car's reversing light.
- The reversing trigger is controlled by the stereo and does not require a separate connection.

After wiring, set the camera resolution via **Settings > Factory Setup (Password: 1234) > Backcar Source Settings**. Select the camera resolution and restart your car.

If No Sound

① Please connect the Small Horn to the power harness.



Power Cable

② Please connect the AUX IN R/L (or AUDIO OUT R/L) from the RCA to AUX IN R/L from the Power harness.



RCA Cable



③ Open the "Car Amplifier" on the drag down page of the top bar

Amplifier

ACC (Red) of Power harness Ground

④ For power amplifier, please connect the power cable of amplifier to the ACC cable of the Power harness.

Diagram for connecting the included AHD backup camera.

Original Backup Camera Connection

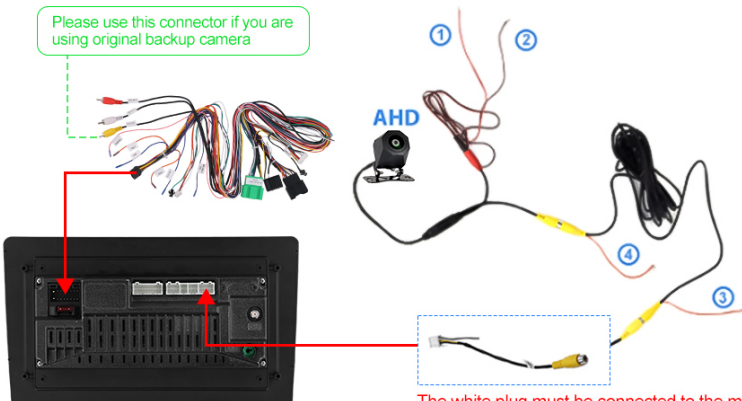
If you are using an original backup camera, connect the yellow AV connector ("CAM Video In") of the power cable to the Reversing Input cable.

Then set the camera resolution via **Settings > Factory Setup (Password: 1234) > Backcar Source Settings**. Select the camera resolution and restart your car.

Reversing Camera Installation

Tip: The reversing input must be plugged in even when the reversing camera is not used.

Please use this connector if you are using original backup camera



The white plug must be connected to the main device, or you can't get bluetooth and wifi signals.

Reversing Camera Wiring

- ① ④ Connect to the positive pole of the power supply of the car's reversing light.
- ② Connect to the negative pole of the power supply of the car's reversing light.
- ③ The reversing trigger is controlled by stereo, so ③ does not require to connect!

Then please set the camera resolution through: **Settings - Factory Setup (Password: 1234) - Backcar Source Settings**. Select the camera resolution, and restart your car.

Diagram for connecting an existing factory backup camera.

OPERATING INSTRUCTIONS

User Interface and Display

The unit features a 10-inch in-cell 1280*720P HD capacitive touchscreen. You can customize the home page by selecting the applications you wish to display.

Incell Screen & Multiple UI

Customize the home page by selecting the applications you want to display on it.



68% Light transmittance



In-Cell



1280*720 Resolution



Incell Screen



Multiple UI

The in-cell screen technology and options for customizing the user interface.

Wireless Carplay & Android Auto

The stereo supports wireless Apple Carplay and Android Auto, allowing access to phone calls, messages, navigation, and music directly from the touchscreen. Hands-free communication is supported via Siri/Google assistants.

Connecting Wireless Apple Carplay

1. Connect the car radio's Bluetooth (Bluetooth name: "Car BT0", Bluetooth PIN: 1234). Ensure "phone audio, music audio" is successfully connected.
2. Click "SpeedPlay".
3. Allow Contacts and Favorites Sync. Allow "Use CarPlay with SpeedPlay".
4. Wait for connection. The first connection may take longer.

Wireless Apple Carplay

How to connect CarPlay:

- ① Connect car radio Bluetooth (Bluetooth name "Car BTO") - Bluetooth pin: 1234 - show "phone audio, music audio" mean succeed;
- ② Click "SpeedPlay"
- ③ "Allow Contacts and Favorites Sync" - Allow
- "Use CarPlay with "SpeedPlay" - Use CarPlay
- ④ Waiting connecting, first time will need some more time to connect.

Wireless Android Auto

How to connect Android Auto:

- ① Click "SpeedPlay"
- ② Connect your phone into rear 4 pin USB port with original data cable
- ③ "Allow USB debugging?" - Allow
- ④ Waiting connecting, first time will need some more time to connect.

Visual guide for connecting and using Wireless Apple Carplay.

Connecting Wireless Android Auto

1. Click "SpeedPlay".
2. Connect your phone into the rear 4-pin USB port with the original data cable.
3. Allow "USB debugging" on your phone.
4. Wait for connection. The first connection may take longer.

Packing List & Size

315mm / 12.4inch

290mm / 11.4inch

280mm / 11inch

USB Cable	GPS Antenna	Rear Camera Input Cable
Installation Tool	Radio Antenna	User Manual
Microphone	Rear camera	Original USB Cable
RCA Cable	Power Cable	Power Cable
Direction Control Adapter Cable	Small Horn	Canbus
Dupont Wire	Astern Adapter Cable	

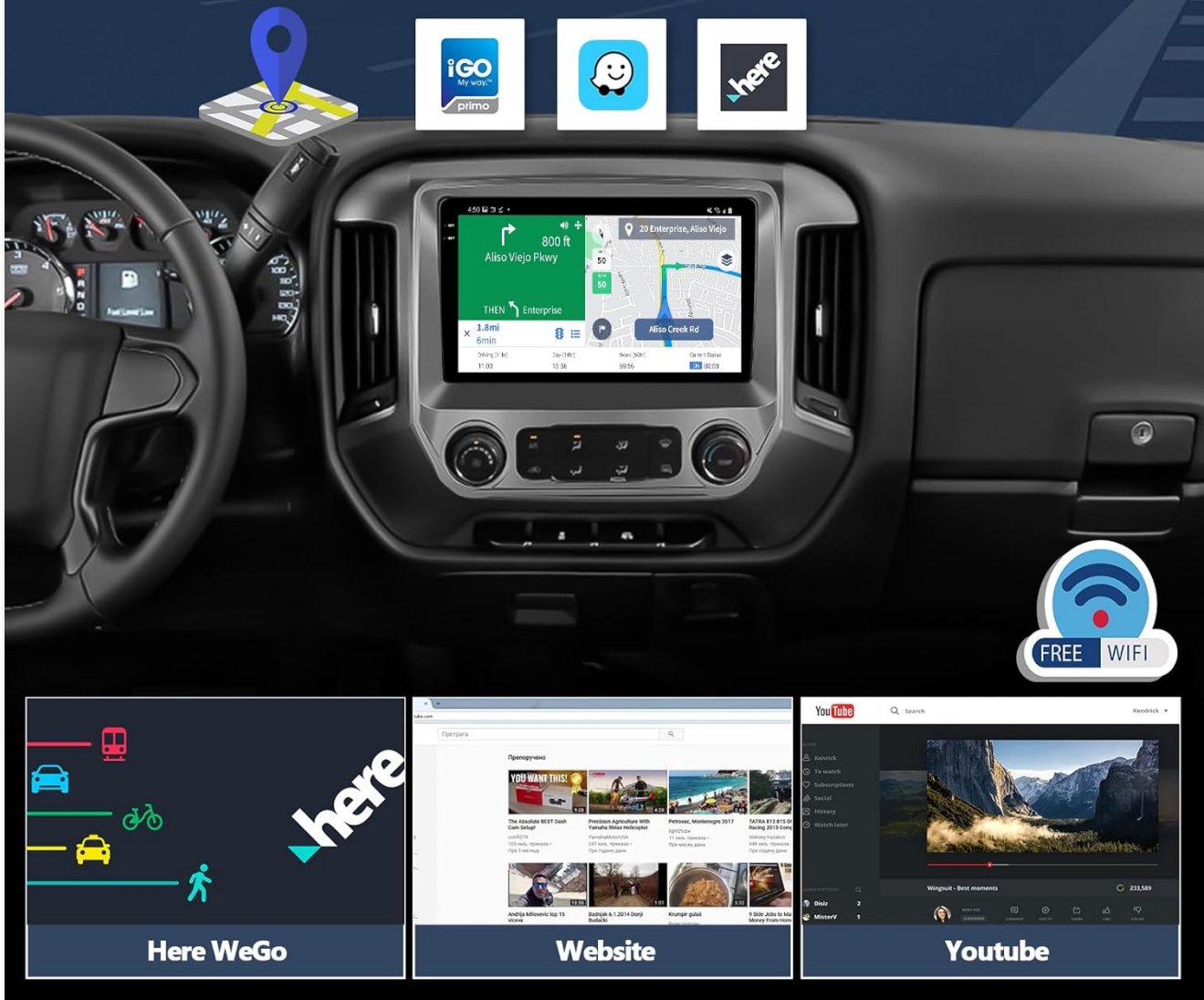
Visual guide for connecting and using Wireless Android Auto.

GPS Navigation & WiFi Connectivity

The unit includes a built-in WiFi/Hotspot module, allowing you to download various applications like Google Maps, Waze, Spotify, YouTube, and Netflix. You can surf the internet and access online maps. For offline navigation, download maps within the Here WEGO app.

GPS Navigation & WiFi Connection

Support both offline and online navigation, easy to connect to WiFi Hotspot and access the internet in the car.



Display of GPS navigation and WiFi hotspot connection capabilities.

Bluetooth & FM RDS Tuner

Support Bluetooth 5.0 for hands-free calling and wireless music streaming from your phone (e.g., Spotify, Pandora). The built-in FM RDS Radio provides access to music, news, and sports with 18 preset stations.

Bluetooth & FM RDS Radio

Support Hands free calling and wireless music streaming from your Bluetooth.
18 stations of analog FM RDS radio.



Interface for Bluetooth hands-free calling and FM RDS radio functions.

Steering Wheel Control (SWC)

The unit is compatible with original steering wheel control buttons. After connecting the CANBUS box and setting the protocol (as described in the Setup section), you can configure the buttons to control various functions of the stereo.

Steering Wheel Controls

No need to divert your eyes, the center screen can be operated via the controls on the steering wheel.

Supports original car buttons



Illustration of steering wheel controls and the on-screen learning interface.

Split Screen Functionality

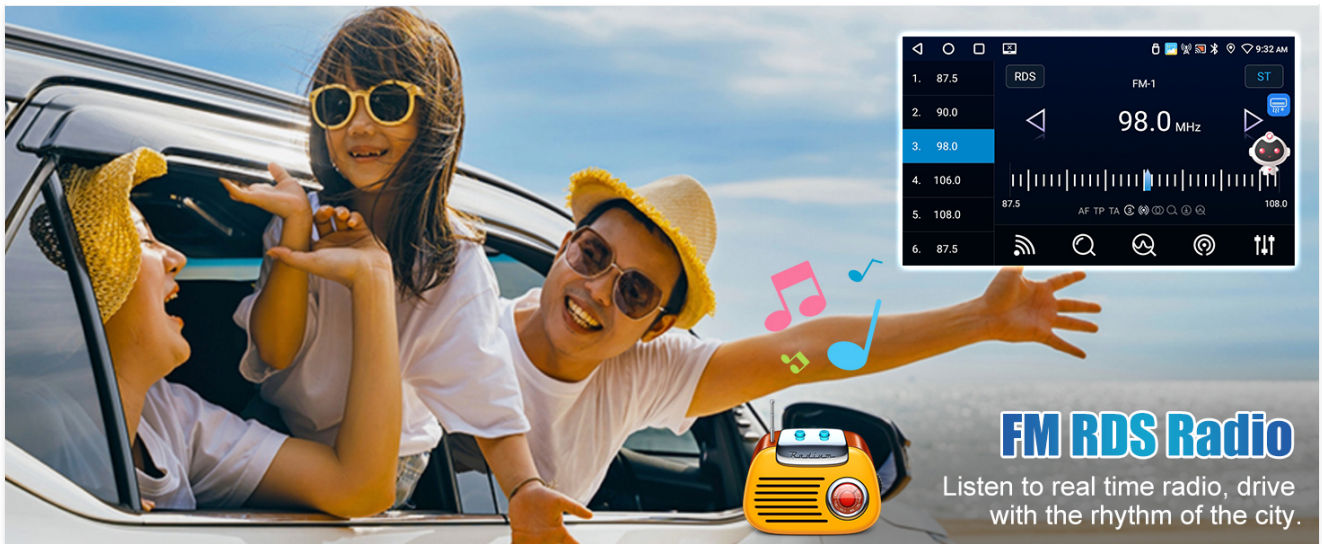
The split-screen feature allows two applications to run simultaneously, enhancing multitasking capabilities. For example, you can use navigation on one side and music playback on the other.



Demonstration of the split-screen mode, displaying navigation and media simultaneously.

iOS/Android Mirror Link

Synchronize your smartphone screen to the car radio display. Android devices support two-way operation, while iOS devices support one-way operation (display only).



Visual representation of the Mirror Link function for both iOS and Android devices.

MAINTENANCE

To ensure the longevity and optimal performance of your car stereo, follow these general maintenance guidelines:

- **Cleaning:** Use a soft, dry cloth to clean the screen and exterior. Avoid abrasive cleaners or solvents that may damage the surface.
- **Software Updates:** Periodically check for available software updates to ensure you have the latest features and bug fixes. Updates can typically be found through the system settings or the manufacturer's website.
- **Environmental Conditions:** Avoid exposing the unit to extreme temperatures, direct sunlight for prolonged periods, or excessive moisture.

TROUBLESHOOTING

This section addresses common issues you might encounter with your CAMECHO car stereo.

No Sound Output

If you experience no sound from the stereo:

1. Connect the Small Horn to the power harness.
2. Connect the AUX IN R/L (or AUDIO OUT R/L) from the RCA cable to AUX IN R/L from the Power harness.
3. Open the "Car Amplifier" application on the drag-down page of the top bar.
4. For external power amplifiers, connect the power cable of the amplifier to the ACC cable of the Power harness.

Support Split-Screen

Supports split-screen functionality, allowing two functions to be operated simultaneously, greatly improving efficiency.

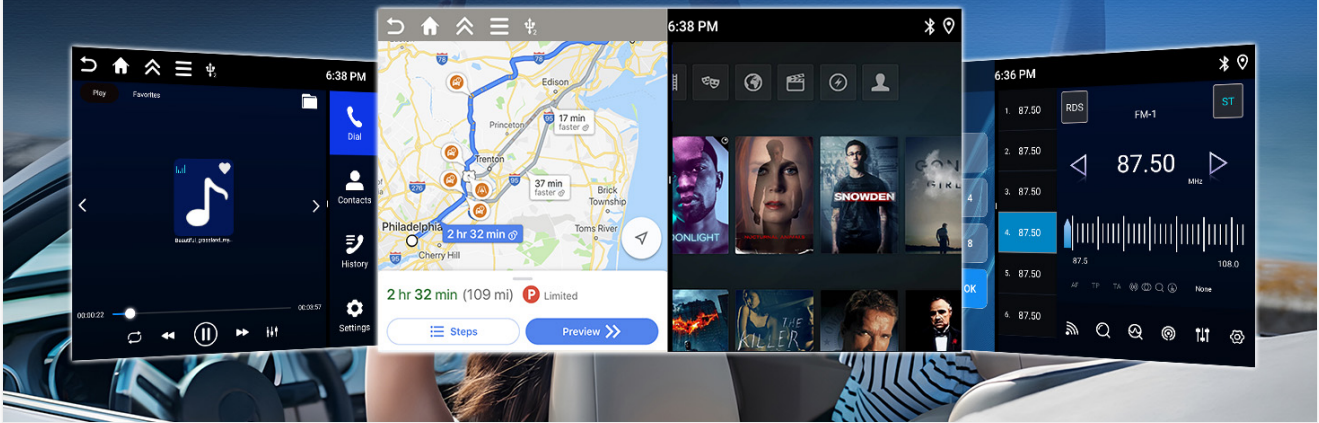


Diagram and instructions for resolving no sound output from the stereo.

Backup Camera Not Working

If the backup camera is not displaying an image:

- Verify all camera wiring connections as per the installation section.
- Ensure the reversing input cable is correctly connected to the main device. The white plug must be connected to the main device for Bluetooth and WiFi signals.
- Check camera settings: Go to **Settings > Factory Setup (Password: 1234) > Backcar Source Settings** and ensure the correct camera resolution is selected. Restart the car after making changes.

Unit Freezes or Cannot Play Videos

If the unit freezes or experiences issues playing videos:

- **Restart the unit:** Turn off the vehicle, wait a few minutes, and then restart.
- **Check storage:** Ensure there is sufficient free storage space on the device.
- **Software updates:** Verify if any system updates are available and install them.
- **Factory Reset:** As a last resort, perform a factory reset (note: this will erase all user data and settings). Consult the system settings for this option.

SPECIFICATIONS

Product Dimensions	31.8L x 5W x 26H Centimetres
Operating System	Android 15
Memory	4GB RAM + 64GB ROM
Screen Size	10 Inches
Screen Resolution	1280 x 720P HD
Touch Screen Type	Capacitive
Wireless Connectivity	Wireless Carplay, Android Auto, WiFi, Bluetooth 5.0
Navigation	GPS (Worldwide Map Type)

Radio Tuner	FM RDS Radio
Compatible Devices	Smartphone
Manufacturer	CAMECHO
Country of Origin	China

WARRANTY INFORMATION

This CAMECHO car stereo comes with a **1-Year Warranty** from the date of purchase. This warranty covers manufacturing defects and malfunctions under normal use. Please retain your proof of purchase for warranty claims.

CUSTOMER SUPPORT

For technical assistance, troubleshooting, or any inquiries regarding your CAMECHO car stereo, please contact our customer support team:

- **Email:** yanningqiu2021@163.com
- **Alternate Email:** CAMECHOVIP@126.com

Our support team is available to provide assistance and guidance.



Contact information for customer support.