

VEVOR GM66010-180X90X60

VEVOR Raised Metal Garden Bed (Model GM66010-180X90X60) Instruction Manual

Your guide to assembly, operation, and maintenance.

1. INTRODUCTION

Thank you for choosing the VEVOR Raised Metal Garden Bed. This manual provides essential information for the safe and efficient assembly, operation, and maintenance of your new garden bed. Please read these instructions carefully before beginning assembly and retain them for future reference.

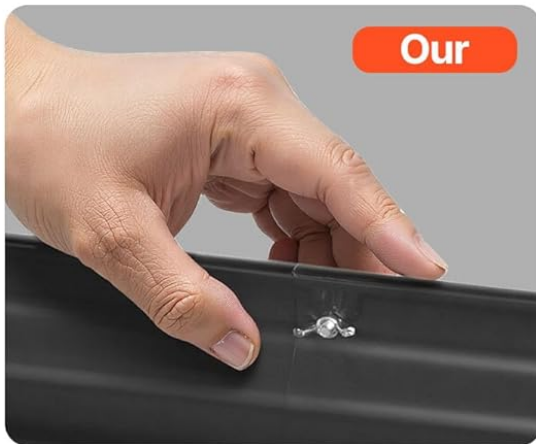
Our 180x90x60 cm raised garden bed offers generous space for plant growth. It is suitable for cultivating a wide variety of vegetables, fruits, flowers, and aromatic herbs in gardens, farms, fields, or open spaces. Made from high-quality galvanized metal, this garden bed is designed for prolonged outdoor use, offering exceptional durability and resistance to rust. Its open-bottom design promotes healthy root development and excellent drainage.

2. SAFETY INFORMATION

Your safety is paramount. Please observe the following precautions:

- Always wear the provided gloves during assembly to protect your hands from potential scratches.
- The raised bed features rolled edges and rounded corners for increased safety. Handle all panels with care.
- Ensure the garden bed is assembled on a level and stable surface to prevent tipping.
- Keep children and pets away from the assembly area.
- Do not overload the garden bed with excessive soil or materials that could compromise its structural integrity.

Scratch-Resistant for Added Security



Rolled Metal Edges to
Avoid Scratches



Sharp Edge, Risk of Cuts

Image: The VEVOR raised garden bed features rolled edges for user safety, contrasting with sharp edges found on some other products.

Thoughtful Design

Security first



Safe Rounded
Edges to Prevent Cuts



Comes with Gloves
to Protect Your Hands



Four Legs with
Protective Caps



Image: Thoughtful design includes safety gloves for assembly and protective caps for the garden bed legs.

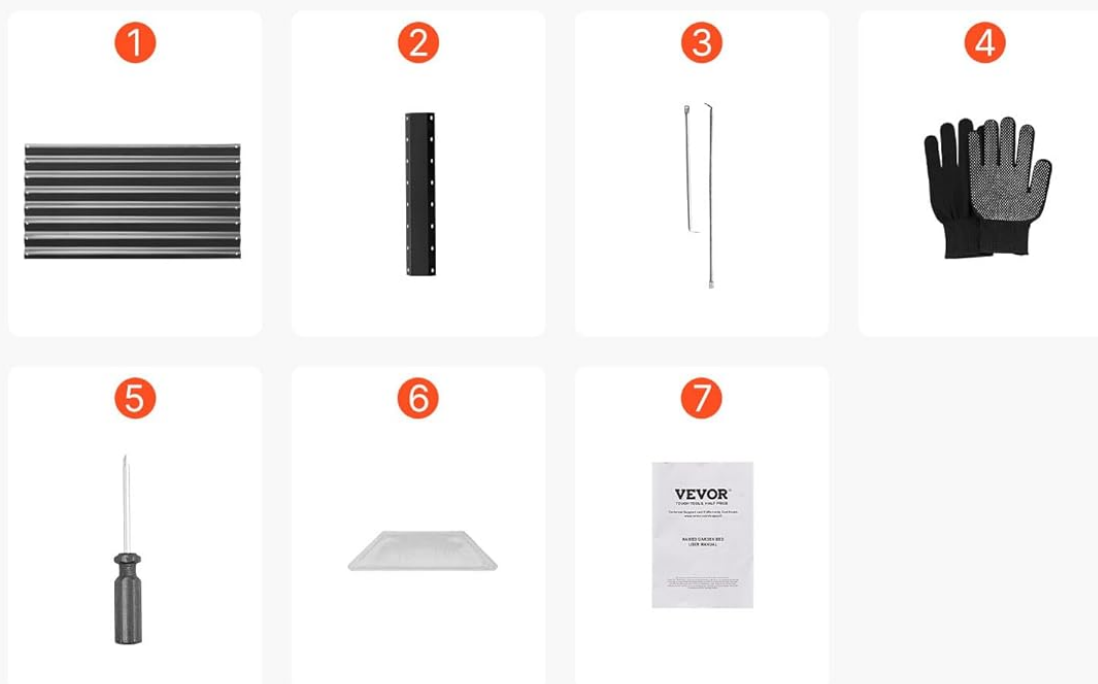
3. PACKAGE CONTENTS

Before assembly, please verify that all components listed below are present and undamaged:

- 6 x Side Panels
- 4 x Corner Connectors
- 6 x Reinforcement Bars
- 1 x Pair of Gloves
- 1 x Screwdriver
- 4 x Plastic Caps
- 1 x User Manual

Quick Installation by One Person

Complete set of accessories included



- 1 Side panels x 6
- 2 Corner Connectors x 4
- 3 Reinforcement Bars x 6
- 4 Gloves x 1
- 5 Screwdriver x 1
- 6 Plastic Caps x 4
- 7 Instruction manual x 1

Image: All components included in the package for quick installation.

4. SETUP AND ASSEMBLY

The VEVOR Raised Metal Garden Bed is designed for easy assembly, typically taking about 15 minutes with no complex tools required beyond the included screwdriver. Follow these steps:

1. **Prepare the Area:** Choose a level and stable location for your garden bed. Clear any debris or obstacles.
2. **Assemble Side Panels:** Attach the side panels together using the provided screws and screwdriver. Ensure the pre-drilled holes align.
3. **Attach Corner Connectors:** Secure the four corner connectors to the assembled side panels with

screws.

4. **Install Reinforcement Bars:** Fix the six X-shaped reinforcement bars internally to enhance stability.
5. **Add Plastic Caps:** Place the plastic caps on the bottom of the legs for protection.
6. **Final Check:** Ensure all screws are tightened and the structure is stable before filling with soil.



Image: Easy 3-step installation process for quick setup.

5. OPERATING INSTRUCTIONS

Once assembled, your VEVOR Raised Metal Garden Bed is ready for planting:

- **Filling with Soil:** Fill the garden bed with a suitable soil mix for your chosen plants. The 60 cm depth is ideal for plants with medium to deep root systems.
- **Planting:** Plant your desired vegetables, fruits, flowers, or herbs. The spacious design allows for diverse planting arrangements.
- **Watering:** The open-bottom design promotes excellent drainage, preventing waterlogging. Water your plants as needed, considering the soil type and plant requirements.
- **Versatile Use:** This garden bed is suitable for various outdoor environments, including gardens, greenhouses, farms, or open fields.

2 ft / 600mm Depth

Helps plants thrive



Image: The 600mm depth of the garden bed provides ample space for plant roots to thrive.

Open bottom design

Excellent ventilation & drainage



Image: The open bottom design ensures excellent ventilation and drainage for healthy plant growth.

Image: The VEVOR Raised Garden Bed is versatile for growing various plants, including vegetables, flowers, fruits, and green plants.

6. MAINTENANCE

To ensure the longevity and optimal performance of your VEVOR Raised Metal Garden Bed, consider the following maintenance tips:

- **Cleaning:** Periodically clean the exterior of the garden bed with a damp cloth to remove dirt and debris. Avoid abrasive cleaners that could damage the galvanized coating.

- **Inspection:** Regularly check all screws and connections to ensure they remain tight. Re-tighten if necessary.
- **Rust Prevention:** While the galvanized coating provides excellent rust resistance, inspect for any signs of damage to the coating. Address any deep scratches promptly to prevent rust.
- **Winter Care:** In regions with harsh winters, consider emptying the bed or covering it to protect it from extreme weather conditions, although it is designed for outdoor use.

7. TROUBLESHOOTING

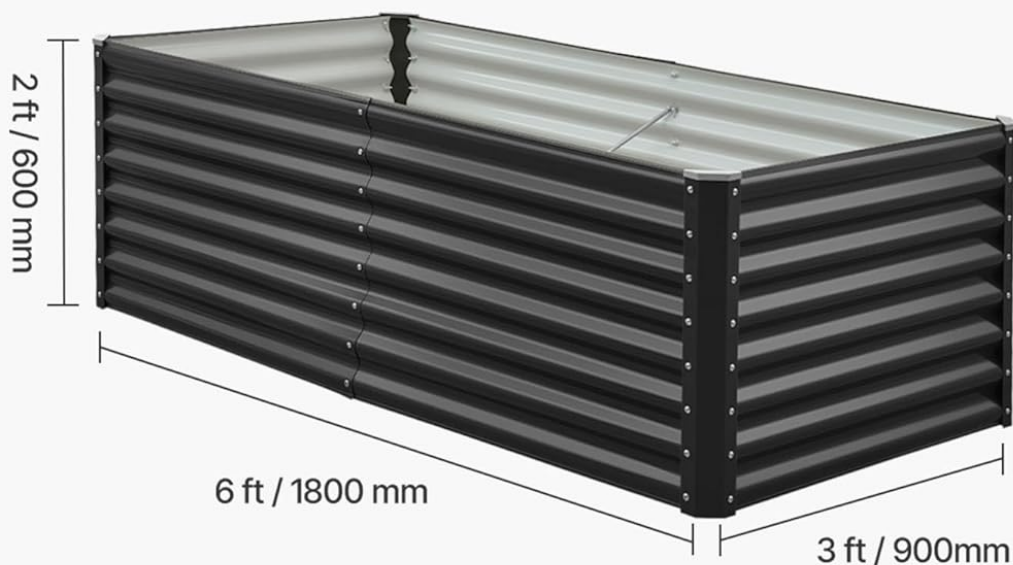
If you encounter any issues with your garden bed, refer to these common troubleshooting tips:

- **Instability after Assembly:** Ensure all screws are fully tightened. Verify that the garden bed is placed on a completely level surface. The X-shaped reinforcement bars should be correctly installed.
- **Panels Bending/Bulging:** This can occur if the bed is overfilled or if the soil is too dense and heavy. Ensure the reinforcement bars are properly installed. If the issue persists, consider reducing the soil volume or using a lighter soil mix.
- **Difficulty with Assembly:** Double-check the instruction manual for correct panel orientation and screw placement. Ensure you are wearing the provided gloves for better grip and protection.

8. SPECIFICATIONS

Feature	Specification
Model Number	GM66010-180X90X60
Material	Galvanized Plate
Color	Gray
Product Dimensions (L x W x H)	1800 x 900 x 600 mm (5.91 x 2.95 x 1.97 feet)
Panel Thickness	0.4 mm / 0.016 inch
Corner Connector Thickness	0.7 mm / 0.027 inch
Number of Reinforcement Bars	6
Product Weight	14.24 kg / 31.4 lbs
Type of Fixation	Ground Mount
Indoor/Outdoor Use	Outdoor

Production information



Item Model Number:

GM66010-180X90X60

Corner Connector Thickness:

0.027 in / 0.7 mm

Number of cross bars: **6**

Color: **Gray**

Product Dimensions:

6 x 3 x 2 ft / 1800 x 900 x 600 mm

Panel thickness:

0.016 in / 0.4 mm

Main material:

Galvanized Plate

Product Weight:

31.4 lbs / 14.24 kg

Accessories

4 x Plastic Caps

6 x Side Panels

4 x Corner Connectors

6 x Reinforcement Bars

1 x Gloves

1 x Screwdriver

1 x Instruction Manual

Image: Detailed product dimensions and specifications.

Sturdy & Durable

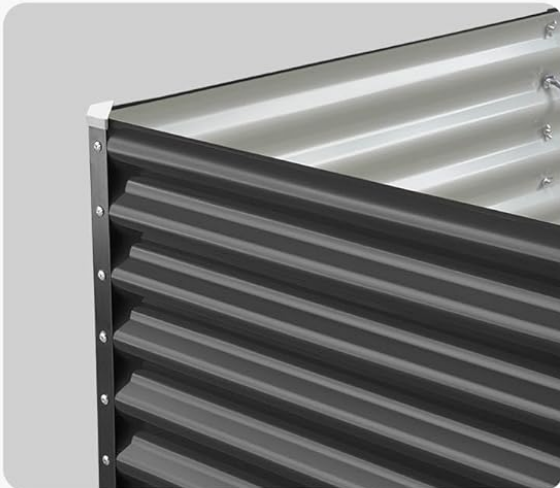
Rust & corrosion resistant



0.4mm Thick
Sturdy and Durable



0.6mm Thick
Stable Support



Galvanized Powder
Coated Surface, Rust-Proof



X-Shaped Reinforcement
Bar for Enhanced Stability

Image: Details on material thickness, galvanized coating, and X-shaped reinforcement for durability and stability.

9. WARRANTY AND SUPPORT

For warranty information or technical support, please refer to the official VEVOR website or contact their customer service directly. Keep your purchase receipt as proof of purchase.

For more information about VEVOR products, visit the official VEVOR store: [VEVOR Store](#)

