

[Manuals.plus](#) /

> [GLORYFIRE](#) /

> GLORYFIRE Bluetooth Shooting Ear Protection Earplugs User Manual - Model GF-9301

GLORYFIRE GF-9301

GLORYFIRE Bluetooth Shooting Ear Protection Earplugs

Model: GF-9301

Brand: GLORYFIRE

INTRODUCTION

Thank you for choosing GLORYFIRE Bluetooth Shooting Ear Protection Earplugs. These earplugs are designed to provide advanced hearing protection with integrated Bluetooth connectivity, allowing for clear communication and audio streaming while maintaining situational awareness in noisy environments. This manual provides detailed instructions for setup, operation, maintenance, and troubleshooting to ensure optimal performance and longevity of your device.



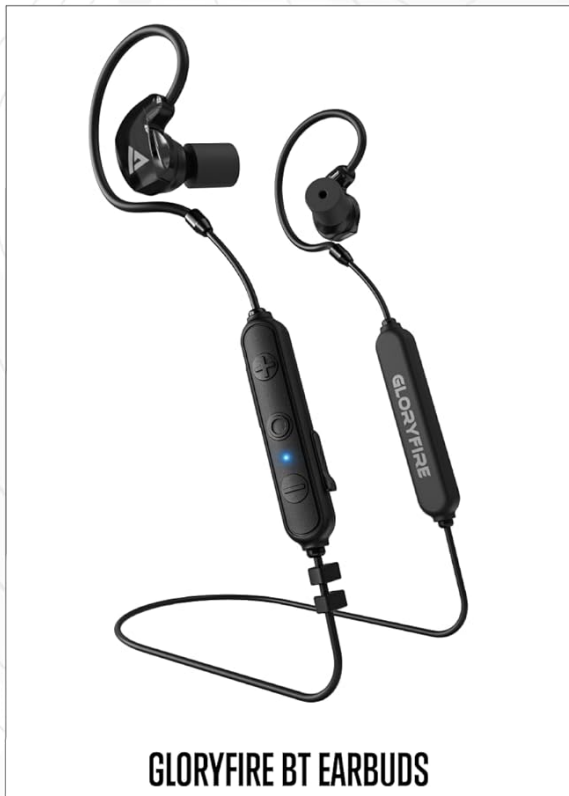
Figure 1: GLORYFIRE Bluetooth Shooting Ear Protection Earplugs highlighting key features.

PACKAGE CONTENTS

Please verify that all items listed below are included in your package:

- GLORYFIRE Bluetooth Earbuds (Model GF-9301)
- USB-C Charging Cable
- EVA Carrying Case
- Conical Eartips (Medium, Large)
- Cylindrical Eartips (Small, Large)
- User Manual

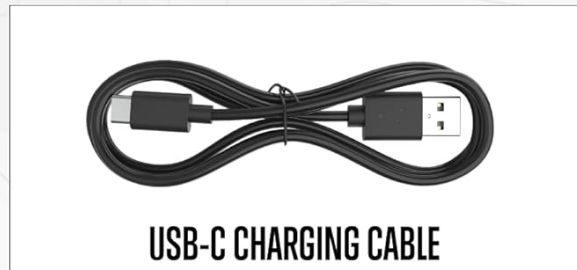
BOX INCLUDES



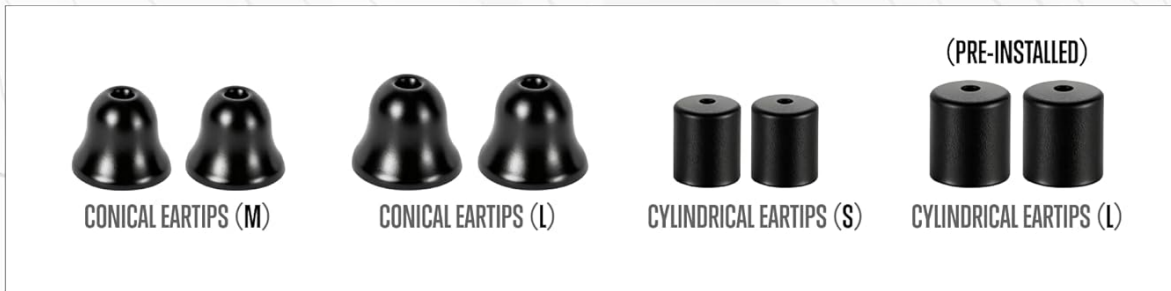
GLORYFIRE BT EARBUDS



CARRYING CASE



USB-C CHARGING CABLE



CONICAL EARTIPS (M)

CONICAL EARTIPS (L)

CYLINDRICAL EARTIPS (S)

CYLINDRICAL EARTIPS (L)

(PRE-INSTALLED)

Figure 2: All items included in the GLORYFIRE earplugs package.

SETUP

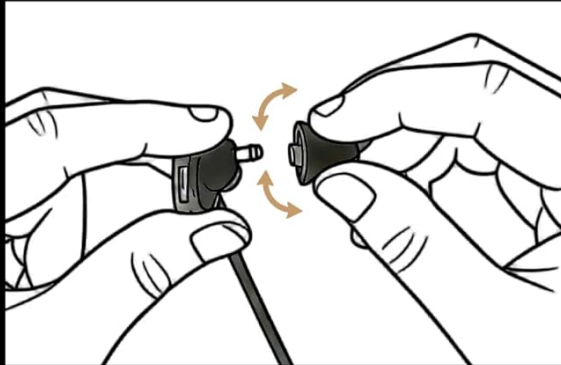
1. Charging the Earbuds

Before first use, fully charge your GLORYFIRE earplugs. Connect the provided USB-C charging cable to the charging port on the earplugs and the other end to a compatible USB power source. The indicator light will show charging status. A full charge provides up to 12 hours of continuous use.

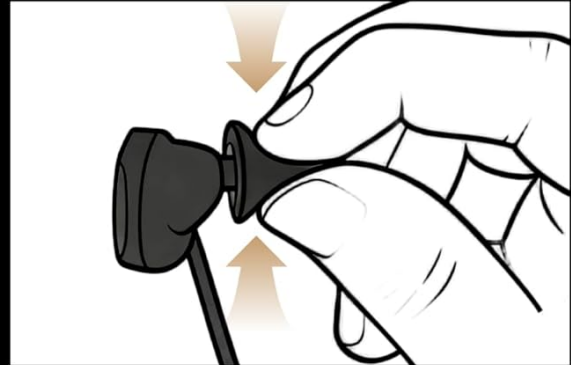
2. Selecting and Fitting Ear Tips

For optimal noise reduction and comfort, select the ear tips that best fit your ear canal. The package includes conical (Medium, Large) and cylindrical (Small, Large) foam tips. To insert, gently compress the foam ear tip into a smaller size, pull your ear upward slightly, and insert the ear tip into the ear canal. Hold in place for 30 seconds to allow the foam to expand and create a secure seal.

HOW IT WORKS?



1. SELECT THE APPROPRIATE EARTIPS SIZE AND TWIST IT ONTO THE EARTIPS STEM.



2. GENTLY COMPRESS THE EARTIPS INTO A SMALLER SIZE.



3. PULL YOUR EAR UPWARD SLIGHTLY AND INSERT THE EARTIPS INTO THE EAR CANAL.



4. HOLD THE EARTIPS IN PLACE FOR 30 SECONDS TO EXPAND.

Figure 3: Step-by-step guide for proper ear tip insertion.

3. Bluetooth Pairing

To pair your earplugs with a Bluetooth-enabled device (e.g., smartphone):

1. Ensure the earplugs are charged and powered on.
2. Activate Bluetooth on your device.
3. Search for available devices and select "GF-9301" from the list.
4. Once connected, a voice prompt will confirm successful pairing.

The earplugs feature Bluetooth 5.2 for a stable connection. If pairing is unsuccessful for 3 minutes, the earplugs will enter sleep mode to conserve battery.



Figure 4: Bluetooth pairing interface on a smartphone.

OPERATING INSTRUCTIONS

1. Understanding Listening Modes

Your GLORYFIRE earplugs offer three distinct listening modes for various environments:

- **Quiet Mode:** Provides maximum noise reduction (26 NRR) for protection against loud impulses like gunshots.
- **Ambient Mode:** Allows you to hear surrounding sounds and conversations clearly while still protecting against harmful noise levels.
- **Clear Voice Mode:** Enhances speech clarity for communication, ideal for phone calls or conversations in moderately noisy settings.

3 MODES FOR YOUR EVERYDAY

CLEAR VOICE MODE



AMBIENT MODE



QUIET MODE



Figure 5: Visual representation of the three listening modes.

2. Controls and Functions

The inline control panel allows you to manage various functions:

- **Power On:** Press and hold the center button for 2 seconds.
- **Power Off:** Press and hold the center button for 5 seconds.
- **Play/Pause:** Click the center button.
- **Voice Assistant:** Triple-click the center button.
- **Answer/End Call:** Click the center button.
- **Reject Call:** Press and hold the center button for 2 seconds.
- **Switch Listening Modes:** Double-click the center button.
- **Music Volume Up:** Click the '+' button.
- **Next Track:** Double-click the '+' button.
- **Music Volume Down:** Click the '-' button.
- **Previous Track:** Double-click the '-' button.
- **Hearing Enhancement:** Use the '+' and '-' buttons to adjust the level of ambient sound amplification in

Ambient Mode.

Your browser does not support the video tag.

Video 1: Demonstrating the controls and modes of the GLORYFIRE Bluetooth Shooting Ear Protection Earplugs.

3. Sound Pickup Technology

The earplugs feature exceptional sound pickup technology with superior low-frequency pickup and high-frequency compression up to 75dB. This ensures crystal-clear audio for critical sounds and communications without distortion, reducing auditory fatigue.



Figure 6: Illustrating the stereo surround and clear sound directionality feature.

4. Noise Reduction

The earplugs provide an adaptive noise reduction rating (NRR) of 26dB, offering optimal protection against loud gunshots and other high-decibel noises. The auto-protection feature activates above 85dB.

26DB NOISE REDUCTION

AUTO-PROTECTION ABOVE 85DB



Figure 7: Demonstrating 26dB noise reduction with auto-protection above 85dB.

5. Usage Scenarios

These earplugs are versatile and suitable for various activities requiring hearing protection and communication:

- Shooting Ranges
- Hunting
- Tactical Training
- Industrial Work Zones
- Law Enforcement



Figure 8: GLORYFIRE earplugs in use across different professional and recreational settings.

MAINTENANCE

1. Cleaning

Regularly clean the ear tips with a soft, damp cloth. Ensure no moisture enters the speaker openings. Replace ear tips if they become worn or damaged to maintain optimal performance and hygiene.

2. Storage

When not in use, store the earplugs in the provided EVA carrying case to protect them from dust, moisture, and physical damage. Avoid storing in extreme temperatures.

3. Durability

The earplugs feature an IP67 waterproof rating, making them resistant to sweat and splashes. They also offer 1.5-meter drop protection, ensuring durability in rugged conditions.

TROUBLESHOOTING

- **No Power:** Ensure the earplugs are fully charged using the provided USB-C cable.
- **Cannot Pair:** Make sure Bluetooth is enabled on your device and the earplugs are in pairing mode. Try restarting both devices.
- **Poor Sound Quality/Noise Reduction:** Check that the ear tips are correctly inserted and form a tight seal in your ear canal. Try different sized ear tips for a better fit. Ensure the correct listening mode is selected for your environment.
- **Intermittent Connection:** Ensure your device is within the Bluetooth range (typically 10 meters) and there are no major obstructions.

If issues persist, please refer to the support section for further assistance.

SPECIFICATIONS

| Feature | Detail |
|--------------------------------|----------------|
| Model Name | GF-9301 |
| Noise Attenuation Rating (NRR) | 26 dB |
| Bluetooth Version | 5.2 |
| Battery Life | Up to 12 hours |
| Charging Port | USB Type-C |
| Waterproof Rating | IP67 |
| Drop Protection | 1.5 meters |
| Material Type | Plastic |
| Item Weight | 0.3 Ounces |

WARRANTY AND SUPPORT

Warranty Information

For specific warranty details, please refer to the warranty card included in your product packaging or visit the official GLORYFIRE website. Keep your proof of purchase for any warranty claims.

Customer Support

If you encounter any issues or have questions regarding your GLORYFIRE Bluetooth Shooting Ear Protection Earplugs, please contact GLORYFIRE customer support through their official website or the contact information provided in your product documentation. Our team is dedicated to providing assistance and ensuring your satisfaction.

