

## Neoteck STAWT533

# Neoteck Digital Angle Finder

MODEL: STAWT533

Instruction Manual

## Introduction

---

This manual provides detailed instructions for the safe and effective use of your Neoteck Digital Angle Finder, Model STAWT533. This precision instrument is designed for accurate angle measurement in various applications, including woodworking, automotive, and construction. Please read this manual thoroughly before operation and retain it for future reference.

## Product Features

---

- **Professional Accuracy:** Achieves  $\pm 0.2^\circ$  accuracy with a  $0.01^\circ$  resolution. Offers dual range flexibility:  $2 \times 180^\circ$  and  $4 \times 90^\circ$ .
- **90° Flip-Up LCD VA Screen:** The VA screen can be tilted to  $0^\circ$ ,  $30^\circ$ ,  $60^\circ$ , or  $90^\circ$  for optimal viewing from various angles.
- **Strong Magnetic Base:** Features powerful embedded magnets and a V-slot for secure attachment to ferrous surfaces, including saw blades, metal beams, and pipes, enabling hands-free operation.
- **Built-In Bubble Level:** Provides a quick visual check for level or plumb, serving as a reliable backup to the digital readout and allowing functionality without batteries.
- **Multifunctional Design:** Includes Absolute and Relative (zero) measurement modes, data HOLD function, 4 unit options ( $^\circ$ , %, mm/m, in/ft), instant reference reset, and 3-minute auto power-off for battery conservation.

## Package Contents

---



Image: The Neoteck Digital Angle Finder, along with two AAA batteries, a mini screwdriver, and the user manual, neatly arranged.

Verify that all items are present in the package:

- 1 x Neoteck Digital Angle Finder (Digital Level Box)
- 2 x AAA Batteries
- 1 x Mini Screwdriver
- 1 x User Manual

## Getting Started

### 1. Battery Installation

1. Locate the battery compartment cover on the back of the device.
2. Use the provided mini screwdriver to open the battery compartment.
3. Insert two AAA batteries, ensuring correct polarity (+/-).
4. Close the battery compartment cover and secure it with the screw.

### 2. Power On/Off

- Press the **ON/OFF** button (labeled with a power symbol) to turn the device on.

- Press and hold the **ON/OFF** button to turn the device off.
- The device will automatically power off after 3 minutes of inactivity to conserve battery life.

## Operating Instructions

### Absolute and Relative Measurement Modes

The angle finder supports two measurement modes: Absolute (ABS) and Relative (REL).

- **Absolute Measurement (ABS):** This is the default mode. It measures the angle relative to a true horizontal surface (0°).
- **Relative Measurement (REL):** To enter Relative mode, short-press the **ZERO** button. In this mode, the current position is set as the new 0° reference, allowing you to measure the angle difference from that specific point. Short-press **ZERO** again to return to Absolute mode.

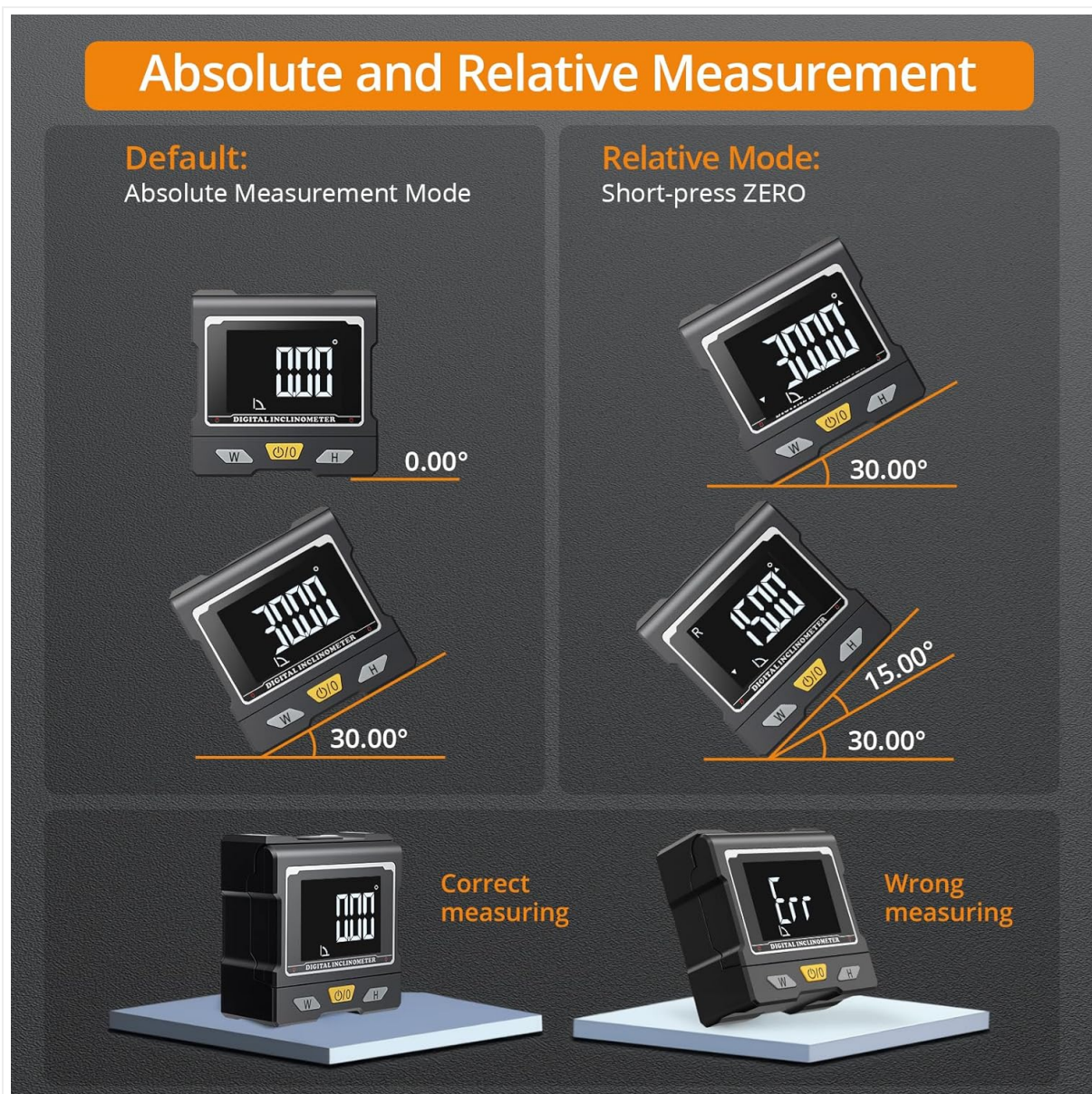


Image: The digital angle finder demonstrating absolute measurement (0.00° on a flat surface) and relative measurement (setting a 30° angle as zero and then measuring a 15° difference).

### Unit Switching

The device can display measurements in four different units: degrees (°), percentage (%), mm/m, and in/ft.

- Press the **W** button (labeled 'W' or 'MODE') to cycle through the available measurement units.



### With horizontal bubbles

Dual Verification for High Accuracy  
Emergency Use (No Power Required)



30.00°



57.74%



577.35mm/m



6.93in/ft

Image: The digital angle finder showing a 30° angle converted into 57.74%, 577.35mm/m, and 6.93in/ft.

### Data Hold Function

To freeze the current measurement on the display:

- Press the **H** button (labeled 'H' or 'HOLD'). The 'H' icon will appear on the screen.
- Press the **H** button again to release the hold and resume live measurement.

### Using the Magnetic Base

The strong magnetic base allows for hands-free operation on ferrous materials.

- Simply place the magnetic base firmly against the metal surface you wish to measure. The V-slot design ensures stable attachment even on rounded pipes or shafts.
- Ensure the surface is clean and free of debris for optimal magnetic grip.

- \* Measurement range: 4 x 90° / 2 x 180°
- \* Accuracy:  $\pm 0.2^\circ$
- \* Resolution: 0.01°

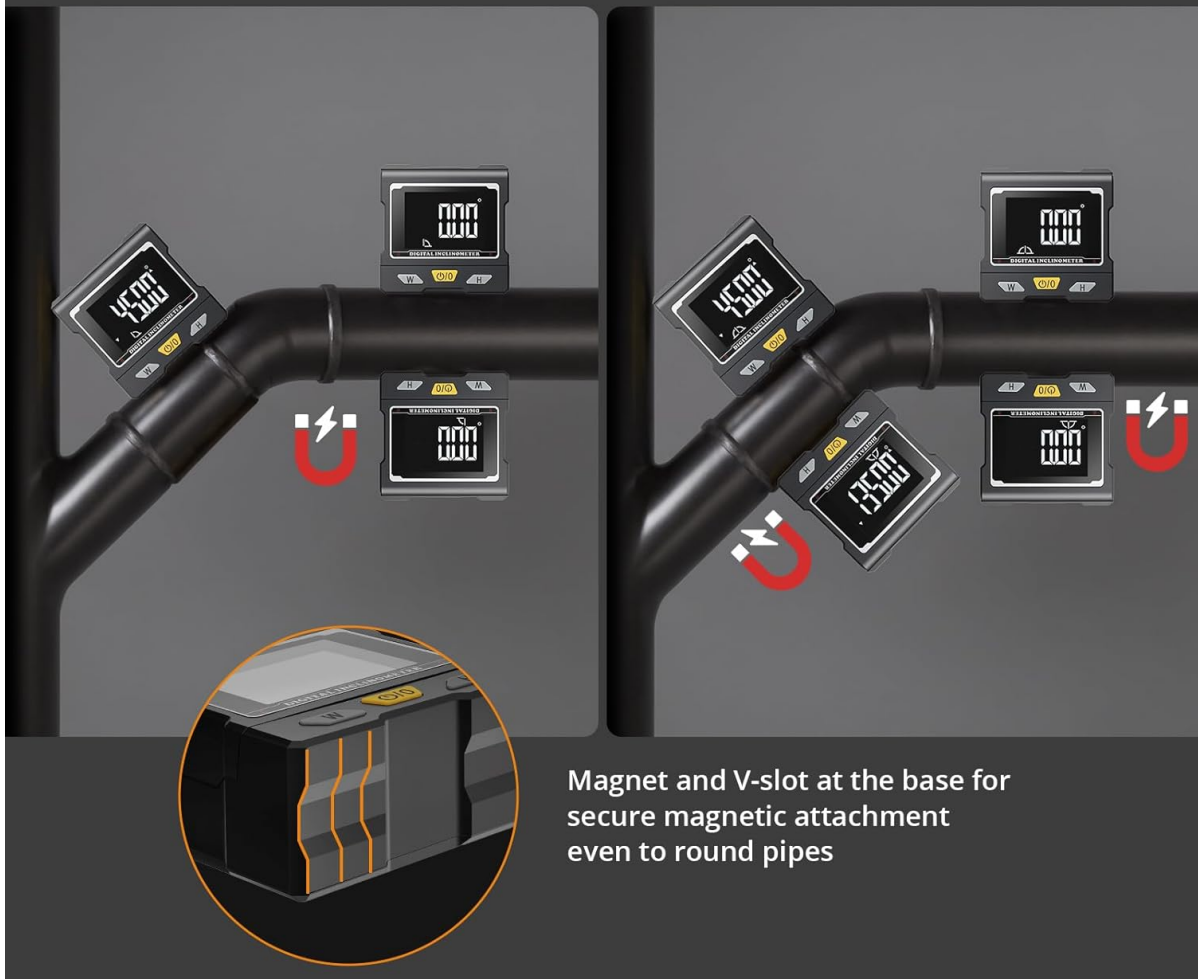


Image: The digital angle finder magnetically attached to metal pipes, showing its use for measuring angles on both flat and curved ferrous surfaces.

### Flip LCD VA Screen

The display screen can be adjusted for better visibility.

- Gently lift the LCD screen to your desired viewing angle (0°, 30°, 60°, or 90°). This feature is particularly useful when working in tight spaces or at awkward angles.



Image: The digital angle finder with its VA LCD screen partially flipped up, highlighting its multi-angle viewing capability.

### **Built-in Bubble Level**

For quick visual checks or when batteries are not available, the integrated bubble level can be used.

- Observe the bubble in the vial on the top of the device to determine if a surface is level or plumb.

### **Official Product Video: Operation Overview**



Video: This official Neoteck video demonstrates the key operational features of the digital angle finder, including absolute and relative measurement modes, unit switching, and the data hold function. It shows practical applications on a table saw and metal pipes.

### **Maintenance**

- **Cleaning:** Wipe the device with a soft, dry cloth. Do not use abrasive cleaners or solvents.
- **Storage:** Store the angle finder in a dry place, away from direct sunlight and extreme temperatures. Remove batteries if the device will not be used for an extended period.
- **Battery Replacement:** Replace batteries when the low battery indicator appears on the display. Always use new AAA batteries.

## Troubleshooting

Problem	Possible Cause	Solution
Device does not power on.	Low or dead batteries; incorrect battery installation.	Replace batteries with new AAA batteries, ensuring correct polarity.
Inaccurate readings.	Device not properly zeroed; magnetic interference; surface not flat.	Ensure the device is zeroed on a known flat surface. Avoid strong magnetic fields. Ensure the measurement surface is stable.
Display shows "Err".	Measurement range exceeded or internal error.	Ensure the angle is within the 2x180° or 4x90° range. Try turning the device off and on again. If the problem persists, contact customer support.

## Specifications

Feature	Detail
Brand	Neoteck
Model Number	STAWT533
Material	Aluminum
Measurement Range	2x180° / 4x90°
Accuracy	±0.2°
Resolution	0.01°
Display	Flip LCD VA Screen
Power Source	2 x AAA Batteries
Auto Power-Off	3 minutes
Special Features	Magnetic Base, Built-in Bubble Level, Absolute/Relative Measurement, Unit Switching (°, %, mm/m, in/ft), Data Hold

## Warranty and Support

The Neoteck Digital Angle Finder (Model STAWT533) comes with an **18-month manufacturer's warranty** from the date of purchase. This warranty covers defects in materials and workmanship under normal use. For warranty claims, technical support, or any questions regarding your product, please contact Neoteck customer service through the retailer where the product was purchased or visit the official Neoteck website for contact information.

