

iGPSPORT BiNavi Air

iGPSPORT BiNavi Air GPS Bicycle Computer User Manual

Your comprehensive guide to setup, operation, and maintenance.

1. INTRODUCTION

The iGPSPORT BiNavi Air is an advanced GPS bicycle computer designed to enhance your cycling experience with precise navigation, comprehensive data tracking, and smart connectivity. This manual provides essential information for setting up, operating, and maintaining your device.

Pantalla a Color para Exteriores de 3.0 Pulgadas

Información de Navegación Clara de un Vistazo
Alta Luminosidad · Ajuste Automático del Brillo



Image 1.1: The iGPSPORT BiNavi Air GPS Bicycle Computer.

2. WHAT'S IN THE BOX

Upon opening your iGPSPORT BiNavi Air package, you should find the following items:

- BiNavi Air device
- Charging Cable
- Lanyard
- User Manual (this document)
- Tempered Glass Screen Protector

Your browser does not support the video tag.

Video 2.1: Product Unboxing. This video shows the unboxing process of the iGPSPORT device, detailing all included components.

3. SETUP

3.1. Device Mounting

The BiNavi Air comes with a simple handlebar mount. Secure the mount to your bicycle's handlebar or stem using the provided rubber bands. Ensure the mount is stable before attaching the device.

3.2. Initial Power-On and Basic Settings

Press and hold the power button to turn on the device. Follow the on-screen prompts to select your language, time zone, and other initial settings. The 3-inch HD color touchscreen provides clear visibility and intuitive interaction.



Image 3.1: The BiNavi Air features a 3-inch outdoor-optimized color screen for clear visibility in various conditions.

3.3. Pairing with the iGPSPORT App

Download the iGPSPORT app from your smartphone's app store. Open the app and follow the instructions to pair your BiNavi Air device via Bluetooth. This enables data synchronization, route management, and personalized settings.

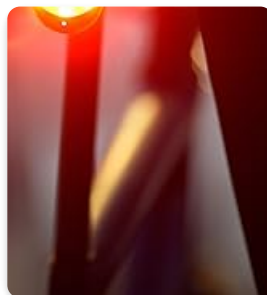


Image 3.2: The iGPSPORT App serves as the central hub for your cycling ecosystem, offering automatic synchronization, clear data analysis, and integrated route/training management.

3.4. Sensor Pairing

The BiNavi Air supports ANT and Bluetooth connectivity for various sensors. To pair a sensor:

1. Navigate to the 'Settings' menu on your device.
2. Select 'Sensors' and choose 'Add Sensor'.
3. Activate your sensor (e.g., spin a wheel for a speed sensor, wear a heart rate monitor).
4. Select the detected sensor from the list to pair.



Image 3.3: The BiNavi Air offers extensive compatibility with various cycling equipment, including speed sensors, cadence sensors, heart rate monitors, power meters, smart trainers, Shimano Di2, E-Bikes, radar, and iGPSPORT bike lights.

4. OPERATING INSTRUCTIONS

4.1. Navigation Features

The BiNavi Air provides intelligent navigation with integrated maps and route planning capabilities.

- **Precise Positioning:** Utilizes dual-frequency five-satellite positioning and an anti-drift algorithm for fast and accurate location tracking, even in challenging terrain.
- **Online and Offline Maps:** Supports both online and offline map usage. You can create routes, import route files, or plan them in the iGPSPORT app and send them to your device.
- **Turn-by-Turn Navigation:** Receive continuous and independent turn indications. Alerts appear earlier at higher speeds to ensure sufficient reaction time.
- **Automatic Route Recalculation:** If you deviate from your planned route, the device automatically recalculates a new path to guide you back.
- **Voice Navigation:** Enhance safety with voice prompts for turns and directions.



Image 4.1: The BiNavi Air offers precise and stable GPS tracking, providing reliable positioning whether you're cycling in city streets, forest trails, or mountain roads, thanks to its multi-band GNSS compatibility.

Your browser does not support the video tag.

Video 4.1: BiNavi Quick Route Book Analysis. This video demonstrates how to quickly analyze route books on the BiNavi device, showcasing its route management capabilities.

Your browser does not support the video tag.

Video 4.2: BiNavi Voice Navigation. This video highlights the voice navigation feature of the BiNavi device, providing audio cues for turns and directions.



Image 4.2: The BiNavi Air features automatic route re-routing, ensuring you quickly return to the correct path even if you stray or miss a turn.



Image 4.3: Instant Navigation to Destination. Search, send, and ride – no route planning required. The device allows for quick navigation from your current location, following routes forward or backward, or returning to the start point.



Image 4.4: Multi-channel Turn Alerts. The BiNavi Air provides audio, display flash, and light signals to help you stay alert when turning. Voice navigation requires connection to the iGPSPORT app.

4.2. Display Customization

The BiNavi Air allows for extensive customization of its display pages to show the data most relevant to you.

- **Personalized Data Pages:** Configure navigation pages freely. Turn indications are shown continuously without blocking key information.
- **Graphical Data Visualization:** The device uses custom digital fonts, multi-color graphics for heart rate, power, and gradient, making data intuitive and easy to read.



Image 4.5: Personalized Display. Customize your display via the computer or the iGPSPORT app. You can also start quickly with a recommended template.

Your browser does not support the video tag.

Video 4.3: BSC300T: Touch and Button Interaction. This video demonstrates the dual control methods of a similar iGPSPORT device, showing both touchscreen and physical button interactions for device operation.

4.3. iClimb 3.0 Ascent Planning

The iClimb 3.0 feature provides precise ascent planning and real-time gradient information.

- **Accurate Climb Data:** Equipped with iClimb 3.0 for ascent planning, compatible with complex routes including return turns, circuits, and repeated segments.
- **Stable Altitude:** Combines multi-channel barometric holes with multiple ascent algorithms to reduce environmental influences, offering stable altitude and faster response.



Image 4.6: Stable Altitude and Ascent Data. The multi-channel barometric design helps reduce wind and rain interference, providing more accurate altitude readings.



Image 4.7: iClimb 3.0: Clearly Identified Climb Segments. Preview each climb before you reach it, helping you manage your effort more intelligently.

4.4. Indoor Training

The BiNavi Air is compatible with smart trainers, allowing you to simulate outdoor routes indoors and engage in structured workouts.



Image 4.8: More Realistic Indoor Training. Simulate outdoor routes on your smart trainer. Compatible with smart trainers.

4.5. Smart Connectivity

The device offers intelligent connectivity features for a seamless cycling experience.

- **iGPLink:** Share routes, segments, and training plans directly between devices.
- **Smart Lights Integration:** Bike lights respond automatically to route status and alerts.
- **Smart Control:** Receive smart notifications, control music, manage camera recording (compatible with DJI Action 4/5 Pro and Insta360 X5/X4/GO series), and control Shimano Di2.



Image 4.9: iGPLink Smart Connectivity. Easy data sharing and smart integration with bike lights.



Image 4.10: Smart Control, Less Distractions. Features include smart notifications, music control, section camera control, and Shimano Di2 control.

4.6. Third-Party Platform Synchronization

Easily synchronize your ride data with popular third-party platforms like Strava, TrainingPeaks, and Komoot via the iGPSPORT app.

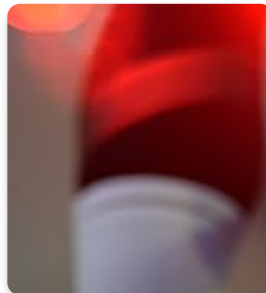


Image 4.11: Sync Once, Ride Anywhere. Upload your routes with a single touch – wireless, hassle-free.

5. MAINTENANCE

5.1. Charging and Battery Life

The BiNavi Air offers up to 30 hours of battery life and supports fast charging. Use the provided charging cable to connect the device to a USB power source.

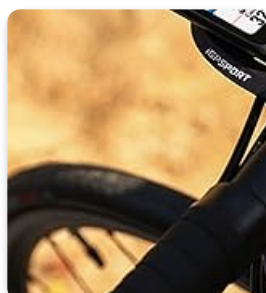


Image 5.1: Up to 30 Hours of Battery Life. Ride all day without worrying about battery. Compatible with fast charging. Actual battery duration may vary based on usage scenarios and personal habits.

5.2. Cleaning

Wipe the device with a soft, damp cloth to remove dirt and sweat. Avoid using harsh chemicals or abrasive materials that could damage the screen or casing.

5.3. Firmware Updates

Regularly check for firmware updates via the iGPSPORT app to ensure your device has the latest features and performance improvements. Follow the app's instructions for updating the firmware.

6. TROUBLESHOOTING

If you encounter issues with your iGPSPORT BiNavi Air, refer to the following common solutions:

- **GPS Signal Issues:** Ensure you are in an open area with a clear view of the sky. Avoid dense tree cover or tall buildings.
- **Sensor Connection Problems:** Check that your sensors are active and within range. Re-pair sensors if necessary through the device settings.
- **Device Not Responding:** Try a soft reset by holding down the power button for 10-15 seconds. If the issue persists, ensure the device is charged.
- **Battery Draining Quickly:** Reduce screen brightness, disable unnecessary features (e.g., Wi-Fi, Bluetooth if not in use), and ensure the latest firmware is installed.

For further assistance, consult the iGPSPORT website or contact customer support.

7. SPECIFICATIONS

Feature	Detail
Model Number	BiNavi Air
Screen Size	3 Inches
Display Type	Color Touchscreen
Battery Life	30 Hours
Connectivity Technology	ANT, Bluetooth
Sensor Types Supported	Speed Sensor, Cadence Sensor, Heart Rate Sensor, GPS Sensor, Barometric Altimeter
Battery Cell Composition	Lithium Ion
Mounting Type	Handlebar Mount
Dimensions	16.75 x 12.1 x 6 cm; 24 g
Country of Origin	China



Image 7.1: Designed to be Lightweight. The BiNavi Air features a thin profile, secure mounting, and a competition-ready design, weighing only 77g with a thickness of 13.8mm.

8. WARRANTY AND SUPPORT

8.1. Warranty Information

The iGPSPORT BiNavi Air comes with a standard manufacturer's warranty. Please refer to the warranty card included in your product packaging or visit the official iGPSPORT website for detailed terms and conditions.

8.2. Customer Support

For technical support, product inquiries, or warranty claims, please contact iGPSPORT customer service through their official website or the contact information provided in your product documentation. You can also find FAQs and additional resources on their support pages.