

Salange PCM20B

Salange 3-in-1 Projector Mount Instruction Manual

Model: PCM20B | Brand: Salange

1. INTRODUCTION

This manual provides detailed instructions for the installation, operation, and maintenance of your Salange 3-in-1 Projector Mount (Model PCM20B). Designed for versatility, this mount supports ceiling and wall installations, offering adjustable height, tilt, and rotation for optimal projection. Please read this manual thoroughly before installation and use to ensure proper setup and safe operation.

2. PRODUCT FEATURES

- **3-in-1 Installation Design:** Supports recessed mounting, telescopic arm mounting, and wall mounting for various environments.
- **Adjustable Height:** The mount offers a height adjustment range from 11.8 inches (30cm) to 21.1 inches (53.7cm), accommodating different ceiling heights and projection needs.
- **360° Rotatable Tray:** The projector tray can rotate 360 degrees, allowing flexible positioning for your projection.
- **0-90° Tilt Capability:** Supports tilting from 0 to 90 degrees, enabling precise angle adjustments for a perfectly rectangular image, especially when used with your projector's keystone correction.
- **Heavy-Duty Steel Construction:** Constructed from high-strength steel, ensuring stability and durability. The universal tray measures 13.8" × 8.7" × 7.82" and can hold devices up to 22 lbs (10 kg).
- **Secure Projector Fixation:** Features multi-row heat dissipation holes on the tray bottom, allowing screws to be driven upward to secure the device. All-around side guards prevent slipping even when tilted.
- **Concealed Cable Management:** Equipped with a built-in system to keep cables neat and organized, contributing to a clutter-free installation.

3. PACKAGE CONTENTS

Please verify that all components are present before beginning installation:

- Projector Mount Tray
- Adjustable Telescopic Pole
- Mounting Base (for ceiling/wall attachment)
- Cable Management Clips/Cover
- Mounting Hardware (screws, anchors, washers)
- Installation Tools (e.g., screwdriver, wrench - may vary)

4. SAFETY INFORMATION

- Ensure the mounting surface (ceiling or wall) can safely support the combined weight of the mount and your projector. Consult a professional if unsure.
- Use appropriate mounting hardware for your specific wall or ceiling type (wooden studs, concrete, drywall).
- Do not exceed the maximum weight capacity of 22 lbs (10 kg).
- Keep children and pets away from the installation area during setup.
- Tighten all screws securely to prevent accidental detachment.
- Regularly inspect the mount for any signs of wear or loosening.

5. SETUP AND INSTALLATION

The Salange 3-in-1 Projector Mount offers flexible installation options. The following steps provide a general guide. Refer to the included video for a visual demonstration of the assembly process.

Your browser does not support the video tag.

Video Description: This official Salange video demonstrates the assembly and installation process of the 3-in-1 Projector Mount, including attaching the tray to the pole, adjusting height, and securing a projector. It also shows the final mounted product.

5.1. Assembly of the Mount

1. **Attach the Tray to the Pole:** Align the projector tray with the bottom section of the adjustable pole. Secure it using the provided screws and a screwdriver. Ensure the tray is firmly attached and stable.
2. **Extend the Pole (Optional):** If using the telescopic arm mounting, extend the pole to your desired length and secure it using the locking mechanism or screws as indicated in the instructions.
3. **Attach Mounting Base:** Connect the mounting base to the top of the adjustable pole using the provided hardware.

5.2. Choosing a Mounting Location

Consider the projection distance, screen size, and desired viewing angle when selecting your mounting spot. Ensure the location is structurally sound.

3 MOUNT OPTIONS



Image Description: This image illustrates the three versatile mounting options: a traditional ceiling mount, a wall mount extending horizontally, and a recessed ceiling mount where the pole is shorter.

5.3. Mounting to Ceiling or Wall

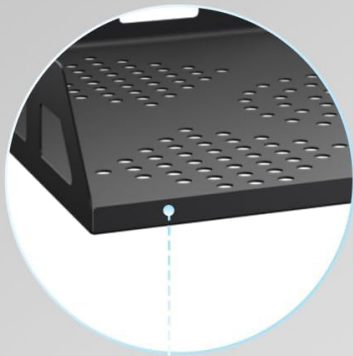
1. **Mark Drilling Points:** Hold the assembled mount against the chosen surface and mark the drilling points for the mounting base.
2. **Drill Holes:** Drill pilot holes at the marked locations using an appropriate drill bit for your surface type. Insert wall anchors if necessary.
3. **Secure the Mount:** Attach the mounting base to the ceiling or wall using the provided screws and a power drill or screwdriver. Ensure it is tightly secured.

5.4. Placing and Securing the Projector

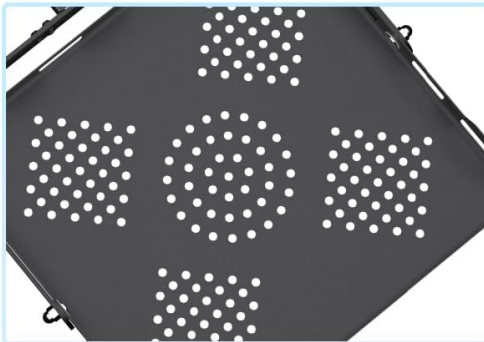
1. **Position Projector:** Carefully place your projector onto the mount's tray.
2. **Secure Projector:** Use the provided screws to fix the projector to the tray through the heat dissipation holes. This prevents movement and ensures stability.

Projector Tray Upgrade

Thicker pallets, higher load-bearing capacity, stable and sturdy.



Smooth, folded edges - prevents scratches and ensures safety.



Provide a better heat dissipation environment for projectors



Securely fixed to the base, preventing it from slipping when adjusting the projection angle.

Image Description: This image highlights the upgraded projector tray, featuring smooth, folded edges for safety, a perforated bottom for heat dissipation, and a 1/4-inch mounting screw to securely fix the projector, preventing slippage.

5.5. Cable Management

Route your projector's power and video cables through the integrated cable management system within the pole. This keeps cables hidden and maintains a clean aesthetic.

Hidden Cable Management



Image Description: This image illustrates the hidden cable management feature, showing how power and video cables can be neatly tucked away inside the mount's central column, leading to a dedicated compartment for connectors.

6. OPERATING INSTRUCTIONS

6.1. Adjusting Height

To adjust the height of the projector, loosen the locking mechanism on the telescopic pole, slide the pole to the desired height, and then securely tighten the mechanism. Ensure the projector is stable after adjustment.

Product Dimensions

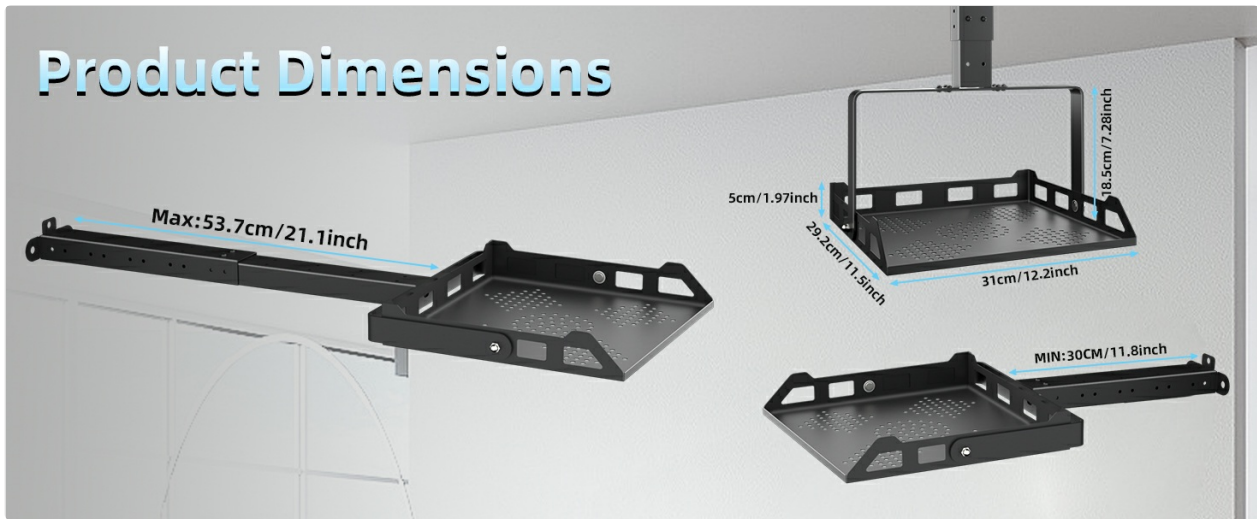


Image Description: This diagram visually represents the height adjustability of the mount, showing the telescopic pole extending from a minimum of 11.8 inches (30cm) to a maximum of 21.1 inches (53.7cm).

6.2. Adjusting Tilt and Rotation

The projector tray allows for 360° rotation and 0-90° tilt. Loosen the adjustment screws on the tray, position your projector to the desired angle, and then re-tighten the screws to lock it in place. This allows for precise alignment with your projection surface.



Image Description: This image demonstrates the 360-degree rotation and tilt capabilities of the projector mount. It shows a projector being adjusted to various angles, highlighting the flexibility for optimal positioning.

7. MAINTENANCE

- **Cleaning:** Wipe the mount with a soft, dry cloth to remove dust. Avoid abrasive cleaners or solvents.
- **Periodic Inspection:** Every few months, check all screws and connections to ensure they remain tight. Re-tighten if any looseness is detected.
- **Weight Check:** Ensure the weight of your projector and any accessories does not exceed the mount's maximum capacity.

8. TROUBLESHOOTING

- **Mount feels unstable:** Ensure all mounting screws are securely fastened to the ceiling/wall and that the projector is properly secured to the tray. Verify the mounting surface is adequate.
- **Difficulty adjusting angle/height:** Loosen the adjustment screws sufficiently before attempting to reposition. Do not force adjustments.

- **Projector slipping on tray:** Ensure the projector is secured to the tray using the provided screws through the heat dissipation holes.

9. SPECIFICATIONS

Feature	Specification
Model Number	PCM20B
Product Dimensions	12.2 x 11.5 x 1.97 inches (Tray)
Item Weight	3.9 pounds
Maximum Weight Capacity	22 lbs (10 kg)
Height Adjustment Range	11.8 - 21.1 inches (30 - 53.7 cm)
Rotation	360°
Tilt Angle	0-90°
Material	High-strength Steel
Color	Black
Mounting Type	Ceiling Mount, Wall Mount



Image Description: This image provides a detailed diagram of the product dimensions, including the tray size (31cm/12.2in by 29.2cm/11.5in) and the adjustable pole's height range (Min: 30cm/11.8in - Max: 53.7cm/21.1in).

10. WARRANTY AND SUPPORT

For warranty information or technical support, please refer to the product packaging or contact Salange customer service directly. Keep your purchase receipt for warranty claims.

