

[Manuals.plus](#) /

› [Giraffe Tools](#) /

› Giraffe Tools 65ft Pressure Washer Hose Reel Instruction Manual

Giraffe Tools TA15B-G20US-A

Giraffe Tools 65ft Pressure Washer Hose Reel Instruction Manual

MODEL: TA15B-G20US-A

Brand: Giraffe Tools

1. Product Overview

The Giraffe Tools 65ft Pressure Washer Hose Reel is designed for efficient and convenient management of your pressure washer hose. It features an automatic retraction system and durable construction for long-lasting performance. This manual provides essential information for the safe installation, operation, and maintenance of your hose reel.



Image 1.1: The Giraffe Tools 65ft Pressure Washer Hose Reel, showcasing its compact design.

Key Features:

- **Wall-Mounted & Auto-Retractable Design:** Allows for easy locking at desired lengths and smooth, tangle-free retraction with a gentle tug.
- **Industrial-Grade Durability:** Constructed with a rugged, powder-coated steel frame, stainless steel rollers, and reinforced inner coils to resist rust, UV damage, and bursting.
- **Hassle-Free Operation:** Features a smooth guided retraction with an anti-rebound mechanism.
- **Universal Compatibility:** Includes multiple adapters (M22-15mm, 14mm-to-14mm male, and 14mm-to-15mm male) for broad compatibility with various pressure washer brands.

2. Safety Information

Always read and understand all safety warnings and instructions before using this product. Failure to follow these instructions may result in serious injury or property damage.

- Ensure the hose reel is securely fixed before use.
- Confirm all connections are firm from the water inlet of the pressure washer to the outlet of the gun before starting operation.
- Pull out all pressure hoses to relieve pressure during use.
- Do not exceed the maximum pressure rating of 3200 PSI or water temperature of 150°F.
- Keep children and pets away from the operating area.
- Wear appropriate personal protective equipment (PPE), such as safety glasses, during operation.

3. Components List

Verify that all components are present before beginning installation:

- 65ft Pressure Washer Hose Reel unit
- Mounting bracket
- Expansion bolts (for wall mounting)
- M22-15mm adapter
- 14mm-to-14mm male connector
- 14mm-to-15mm male adapter
- Instruction Manual

4. Setup and Installation

The hose reel offers flexible installation options, including wall, floor, or ceiling mounting.

4.1 Wall Mounting Steps:

1. Take out the pressure washer hose reel and expansion bolts.
2. Mark the location of 4 holes on the wall and use a 9/16" drill bit to drill 2.1 inches deep holes.
3. Secure the machine to prevent it from wobbling using the provided expansion bolts.
4. Installation is complete.



Image 4.1: The hose reel can be installed on the ceiling, floor, or wall.

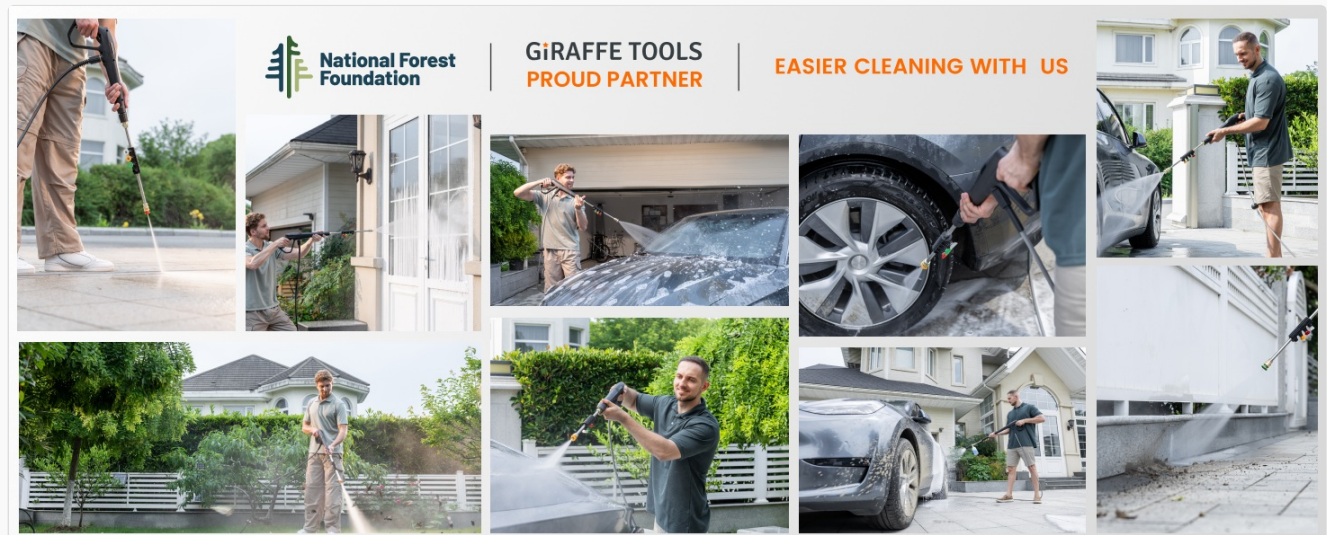


Image 4.2: Visual guide for the four-step wall mounting process.

4.2 Connecting to a Pressure Washer:

The hose reel includes various adapters to ensure compatibility with most pressure washer brands. Select the appropriate adapter for your pressure washer's inlet and connect the hose reel's inlet hose. Then, connect your pressure washer gun to the outlet hose of the reel.

FLEXIBLE INSTALLATION

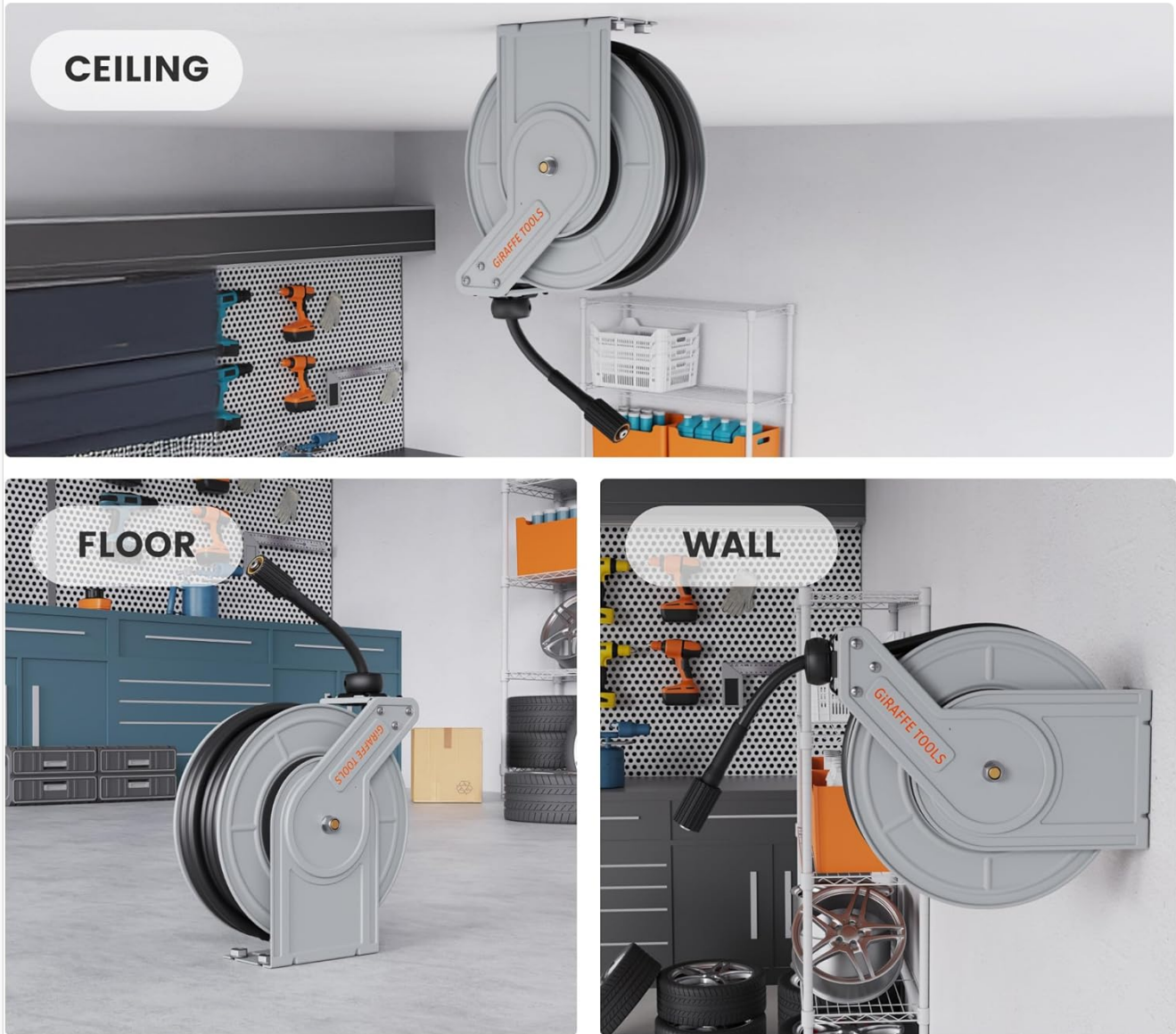


Image 4.3: Connection diagram illustrating different adapter uses for universal compatibility.

Your browser does not support the video tag.

Video 4.1: A demonstration of the Giraffe Tools 65ft Pressure Washer Hose Reel, including setup and usage.

5. Operating Instructions

5.1 Extending the Hose:

Pull the hose gently to extend it to the desired length. The automatic locking mechanism will engage, holding the hose in place. To unlock and extend further, pull slightly again.

AUTOMATIC RETRACTION SYSTEM

No More Kinks, No More Tangles



Giraffe Tools was ranked No.1 worldwide in retractable tools sales by Frost & Sullivan in 2024.

Image 5.1: The automatic retraction system allows for locking the hose at any desired length.

5.2 Retracting the Hose:

Give the hose a gentle tug to disengage the locking mechanism. The hose will automatically retract smoothly into the reel. The 4-roller anti-snag guide system ensures tangle-free rewinding.

PRODUCT BASIC INFORMATION



Image 5.2: The anti-abrasion design with non-sag rollers minimizes hose wear during retraction.

5.3 Adjustable Guide Arm:

Adjust the guide arm to a position where the hose pulls out straight to avoid abrasion and ensure smooth operation.

ANTI-ABRASION DESIGN



SELF-ADJUSTING STOPPING BALL

Keeps Exposed Length Of Hose Within Reach At All Times

FOUR NON-SNAG ROLLERS

Resist Kinking And Tangling Under Pressure To Reduce Hose Abrasion



Image 5.3: The adjustable guide arm helps maintain proper hose alignment.

6. Maintenance

- **Regular Inspection:** Periodically inspect the hose for any signs of wear, cuts, or leaks. Check connections for tightness.
- **Cleaning:** Clean the exterior of the hose reel with a damp cloth. Avoid using harsh chemicals that may damage the finish.
- **Storage:** Store the hose reel in a dry, protected area when not in use, especially during freezing temperatures, to prevent damage to the hose and internal components.
- **Pressure Relief:** Always pull out all pressure hoses to relieve pressure after each use to prevent strain on the system.

7. Troubleshooting

- **Hose not retracting:** Ensure the hose is not kinked or obstructed. Give a firm, quick tug to disengage the lock.
- **Leaks at connections:** Check that all adapters and connections are securely tightened. Inspect O-rings and

gaskets for damage and replace if necessary.

- **Low pressure:** Verify that the water supply is fully open and that your pressure washer is functioning correctly. Check for kinks in the hose.

8. Specifications

Specification	Detail
Brand	Giraffe Tools
Model Number	TA15B-G20US-A
Hose Length	65ft
Max Pressure	3200 PSI
Max Water Temperature	150°F
Material	Alloy Steel
Color	Silver
Item Dimensions (L x W x H)	16.93 x 13.58 x 7.28 inches
Item Weight	18.5 Pounds
Installation Method	Wall Mount (also suitable for floor/ceiling)
Operation Mode	Automatic

UNIVERSAL COMPATIBILITY



Image 8.1: Key product specifications and features.

9. Warranty and Support

Giraffe Tools provides a **24-Month Warranty** for this product. For any issues or inquiries, please contact our customer support team to receive a timely solution and friendly assistance. We are committed to solving all your problems professionally.

For further assistance, please visit the official Giraffe Tools website or contact their customer service directly.