

Manuals+

[Q & A](#) | [Deep Search](#) | [Upload](#)

manuals.plus /

- › [LOKLNEYK](#) /
- › [LOKLNEYK Smart Wifi Boiler Thermostat V9BW Instruction Manual](#)

LOKLNEYK V9BW

LOKLNEYK Smart Wifi Boiler Thermostat V9BW Instruction Manual

1. INTRODUCTION

This manual provides detailed instructions for the installation, operation, and maintenance of your LOKLNEYK V9BW Smart Wifi Boiler Thermostat. This battery-powered room temperature controller is designed to manage gas boiler systems, offering smart control via Wi-Fi connectivity and various operational modes to optimize your home's heating.



Image 1.1: The LOKLNEYK V9BW Smart Wifi Boiler Thermostat display, showing a clear digital readout of the current room temperature and the user-set temperature. The interface includes icons for Wi-Fi, heating status, and a lock function, along with navigation buttons.

2. SETUP AND INSTALLATION

2.1 Power Supply

The thermostat is powered by three (3) 1.5V AA alkaline batteries. Ensure batteries are inserted correctly according to polarity markings inside the battery compartment.

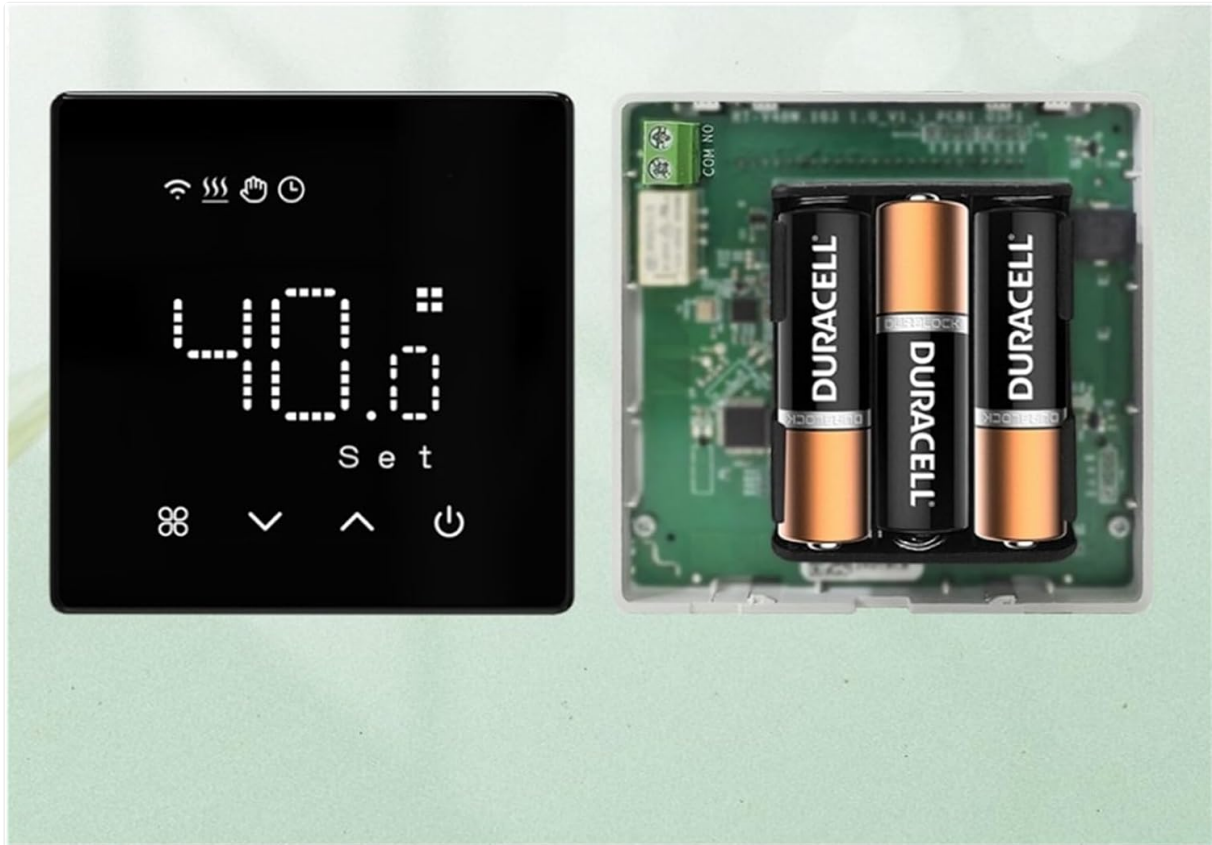


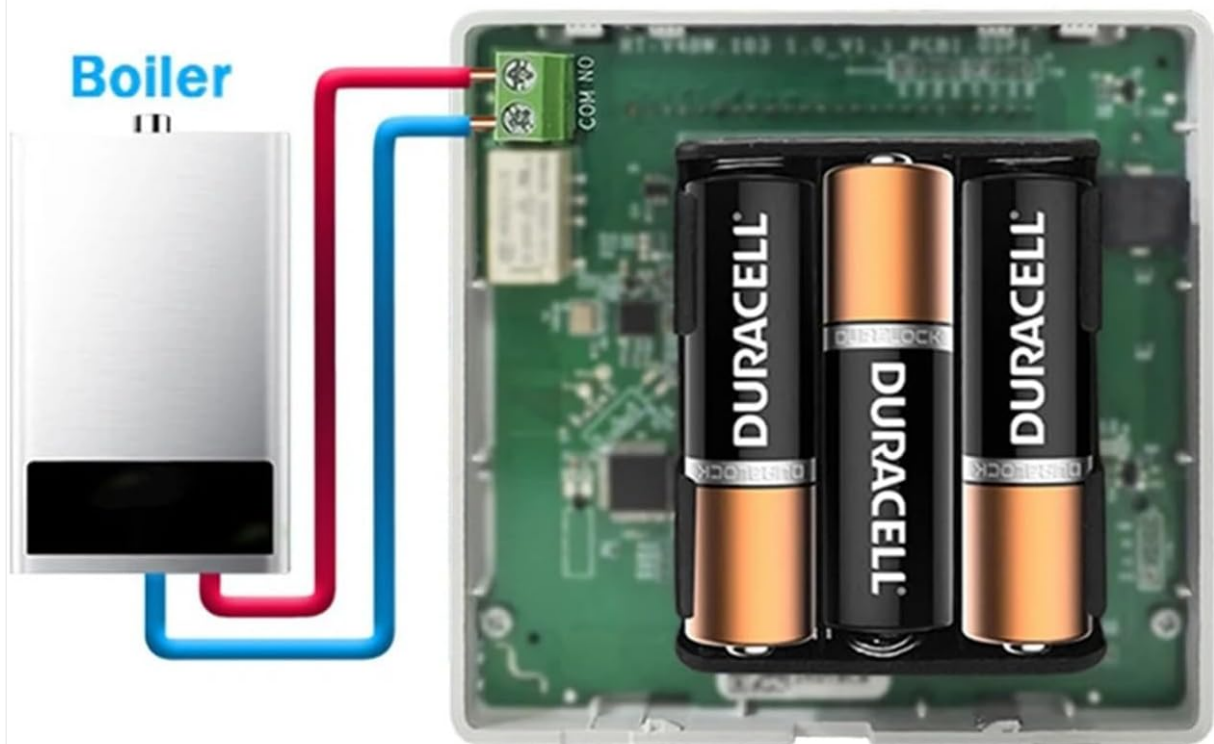
Image 2.1: Rear view of the thermostat with the battery compartment open, illustrating the correct placement of three AA alkaline batteries. The internal circuitry is also visible.

2.2 Wiring for Boiler Connection

Connect the thermostat to your gas boiler system. The thermostat uses COM (Common) and NO (Normally Open) terminals for boiler control. Refer to the wiring diagram below for proper connection.

- **COM:** Common terminal.
- **NO:** Normally Open terminal, connects to the boiler's control input.

Applicable Scenarios



For Water Gas Boiler

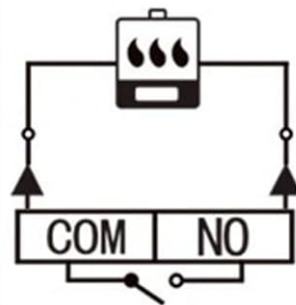


Image 2.2: A clear wiring diagram demonstrating how to connect the thermostat to a gas boiler. Red and blue wires are shown connecting the thermostat's COM and NO terminals to the boiler's control inputs. An additional diagram illustrates a typical water gas boiler setup.

2.3 App Connection (Tuya / Smart Life)

To enable smart features, download the Tuya Smart or Smart Life app from your mobile device's app store. Follow the in-app instructions to pair your thermostat with your Wi-Fi network. This allows for remote control and advanced programming.

3. OPERATING INSTRUCTIONS

3.1 Temperature Setting

Use the up and down arrow buttons on the thermostat to adjust the desired setpoint temperature. The display will show both the current room temperature and the set temperature.

3.2 Mode Selection

The thermostat supports multiple operating modes:

- **Manual Mode:** Maintains a constant temperature set by the user.
- **Auto Mode (Programming Mode):** Follows a pre-set weekly schedule.
- **Temporary Override Mode:** Allows a temporary temperature adjustment during Auto Mode, reverting to the schedule after a set period.
- **ECO Mode:** An energy-saving mode designed to reduce power consumption.



Image 3.1: The thermostat display showing the 'Set' temperature, accompanied by a visual list of the four primary operating modes: ECO mode, Auto mode, Manual mode, and Temporary Override mode.

3.3 ECO Mode Functionality

When activated, ECO Mode optimizes heating to save energy. This mode can lead to approximately 20% energy savings compared to standard operation.

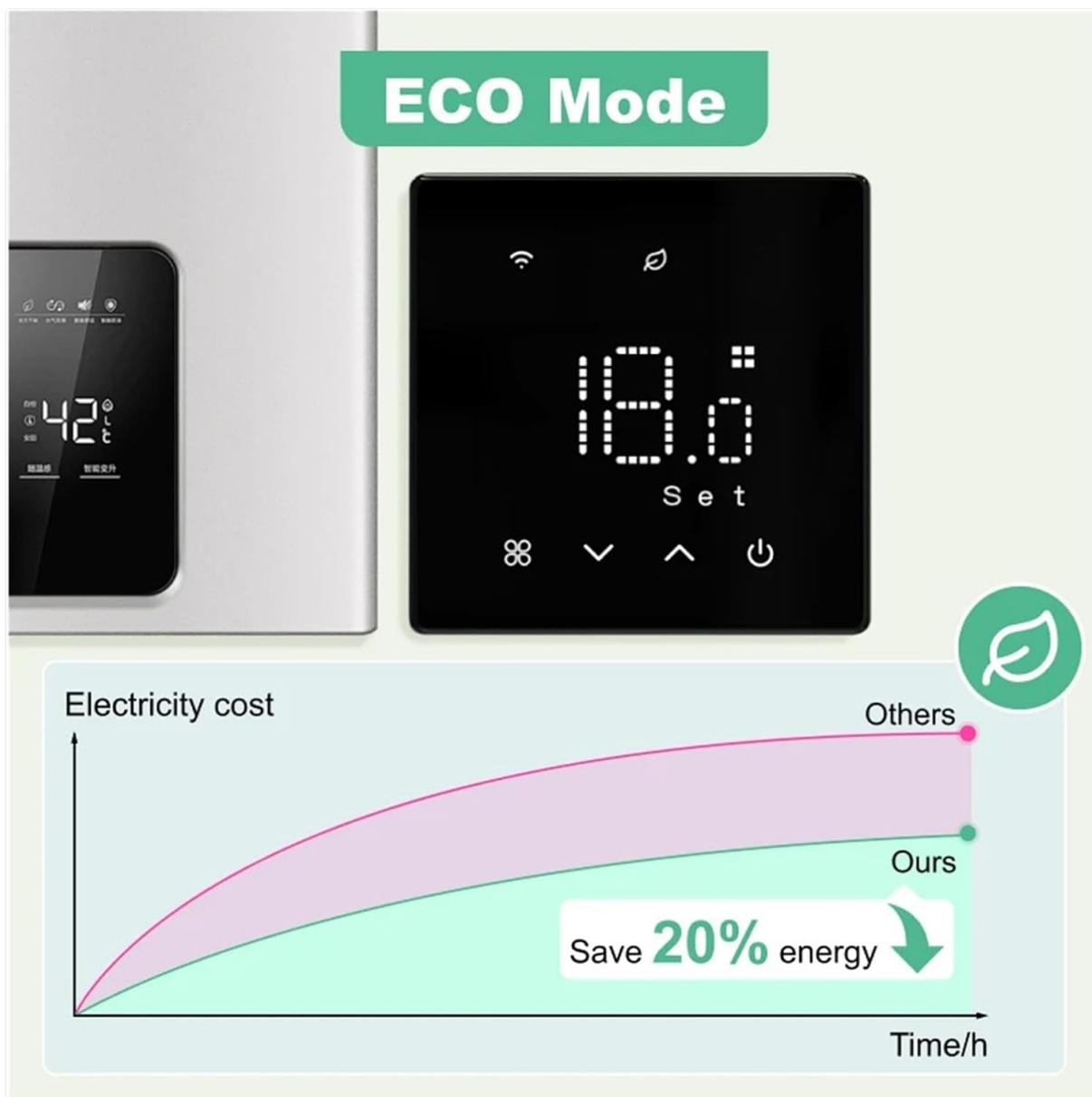


Image 3.2: The thermostat display indicating 'ECO Mode' is active. Below the thermostat, a graph illustrates the comparative electricity cost over time, highlighting a 20% energy saving when using this thermostat's ECO mode versus other systems.

3.4 Additional Features

- **Child Lock Function:** Prevents unauthorized changes to settings. Activate via the mobile app or thermostat interface.
- **Weekly Programmable:** Set custom heating schedules for each day of the week through the app.
- **Voice Control:** Compatible with Alexa, Google Home, and Alice for hands-free operation.
- **Anti-Frost Protection:** Automatically activates heating if the room temperature drops below a pre-set minimum to prevent freezing.
- **Family Sharing Function:** Share control of the thermostat with multiple family members via the app.
- **Low Battery Reminder:** The thermostat will display an icon or notification when batteries are low and require replacement.

4. MAINTENANCE

4.1 Battery Replacement

When the low battery indicator appears, replace all three AA alkaline batteries promptly to ensure

continuous operation. Refer to Section 2.1 for battery installation.

4.2 Cleaning

Wipe the thermostat's surface with a soft, dry cloth. Do not use abrasive cleaners or solvents, as these can damage the display or housing material.

5. TROUBLESHOOTING

Problem	Possible Cause	Solution
Thermostat not powering on	Dead or incorrectly installed batteries.	Replace batteries with new AA alkaline batteries, ensuring correct polarity.
Boiler not responding	Incorrect wiring; boiler power off; thermostat not calling for heat.	Check wiring connections (Section 2.2). Ensure boiler has power. Verify thermostat is set to a temperature higher than the current room temperature.
Wi-Fi connectivity issues	Incorrect Wi-Fi password; router too far; 5GHz network selected.	Ensure correct 2.4GHz Wi-Fi network and password. Move thermostat closer to router or use a Wi-Fi extender. Re-pair via the app.
Inaccurate temperature reading	Thermostat placed near heat source/draft; sensor obstruction.	Relocate thermostat away from direct sunlight, drafts, or heat-emitting appliances. Ensure sensor is clear.

6. SPECIFICATIONS

Feature	Detail
Model Number	V9BW
Power Supply	3 x 1.5V AA alkaline batteries
Temperature Setting Range	5~95°C
Setpoint Temperature Accuracy	0.5°C
Switch Deviation	0.1~10°C (Factory setting: 0.5°C)
Ambient Temperature	-5~50°C
Protection Level	IP20
Housing Material	Anti-Flammable PC
Working APP	Tuya APP / Smart Life
Application System	Gas Boiler
Voice Control Compatibility	Alexa / Google Home / Alice
Item Weight	1.76 ounces

Feature	Detail
Package Dimensions	0.39 x 0.39 x 0.39 inches

7. WARRANTY INFORMATION

Please refer to the manufacturer's official website or the product packaging for detailed warranty information. Typically, products come with a limited warranty covering manufacturing defects from the date of purchase.

8. CUSTOMER SUPPORT

For technical assistance, troubleshooting, or further inquiries, please contact LOKLNEYK customer support through their official website or the contact information provided with your product packaging.