

## Tecmojo 16112248B

# Tecmojo UL Listed Ultra-Slim Cat6a Ethernet Cable User Manual

Model: 16112248B

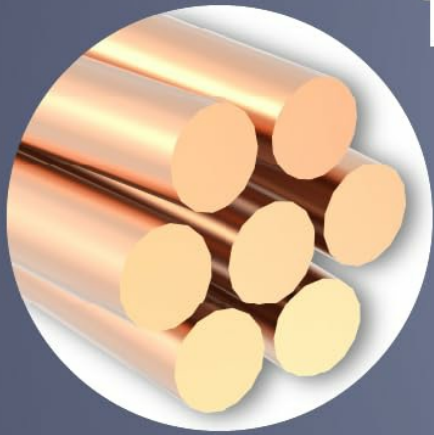
## 1. INTRODUCTION

This manual provides essential information for the proper use and care of your Tecmojo UL Listed Ultra-Slim Cat6a Ethernet Cable. Designed for high-speed data transmission, this cable ensures reliable network connectivity for various devices. Please read this manual thoroughly before use to ensure optimal performance and safety.

## 2. PRODUCT FEATURES

- **10Gbps High-Speed Data Transfer:** Supports data transmission speeds up to 10Gbps with 550MHz bandwidth. Built with 30AWG 100% pure copper conductors for stable, low-loss signal performance.
- **UL-Listed & Safety Certified:** UL-tested and certified Cat6a slim patch cable meets strict safety and material quality standards for professional and commercial use.
- **Ultra-Slim, Space-Saving Design:** The ultra-slim Cat6a cable is ideal for high-density racks and cabinets. Its slim profile helps reduce congestion and improves airflow inside network enclosures.
- **Premium Materials & Durable Jacket:** Constructed with 100% pure copper wire and gold-plated RJ45 connectors. The flexible PVC jacket resists wear, bending fatigue, and facilitates installations in tight spaces.
- **Wide Compatibility & Backward Support:** Compatible with PCs, printers, routers, switches, NAS, VoIP phones, PoE devices, and more. Backward compatible with Cat6, Cat5e, and Cat5 networks.

# 100% Bare Copper Conductors



4 Twisted Pairs  
-Reliable Transmission



Flexible PVC Jacket

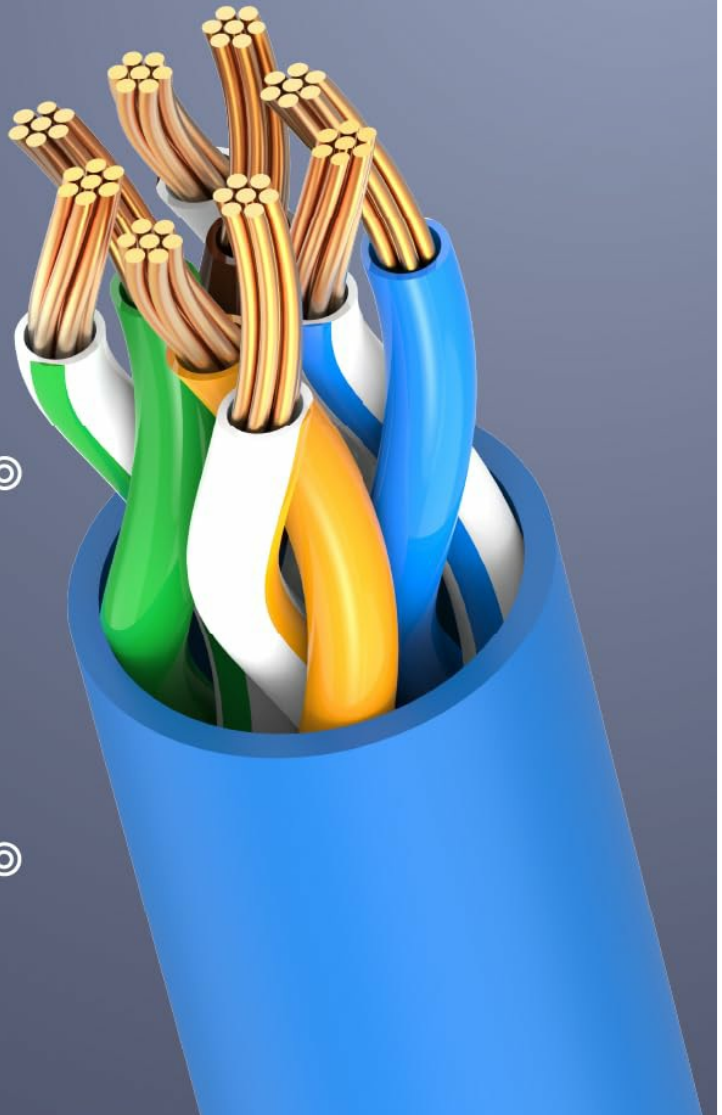


Image: Internal structure of the Tecmojo Cat6a Ethernet cable, highlighting 100% bare copper conductors and a flexible PVC jacket for reliable transmission.

# Ultra-Slim Cables for Tight Racks

Easy Routing and Better Airflow

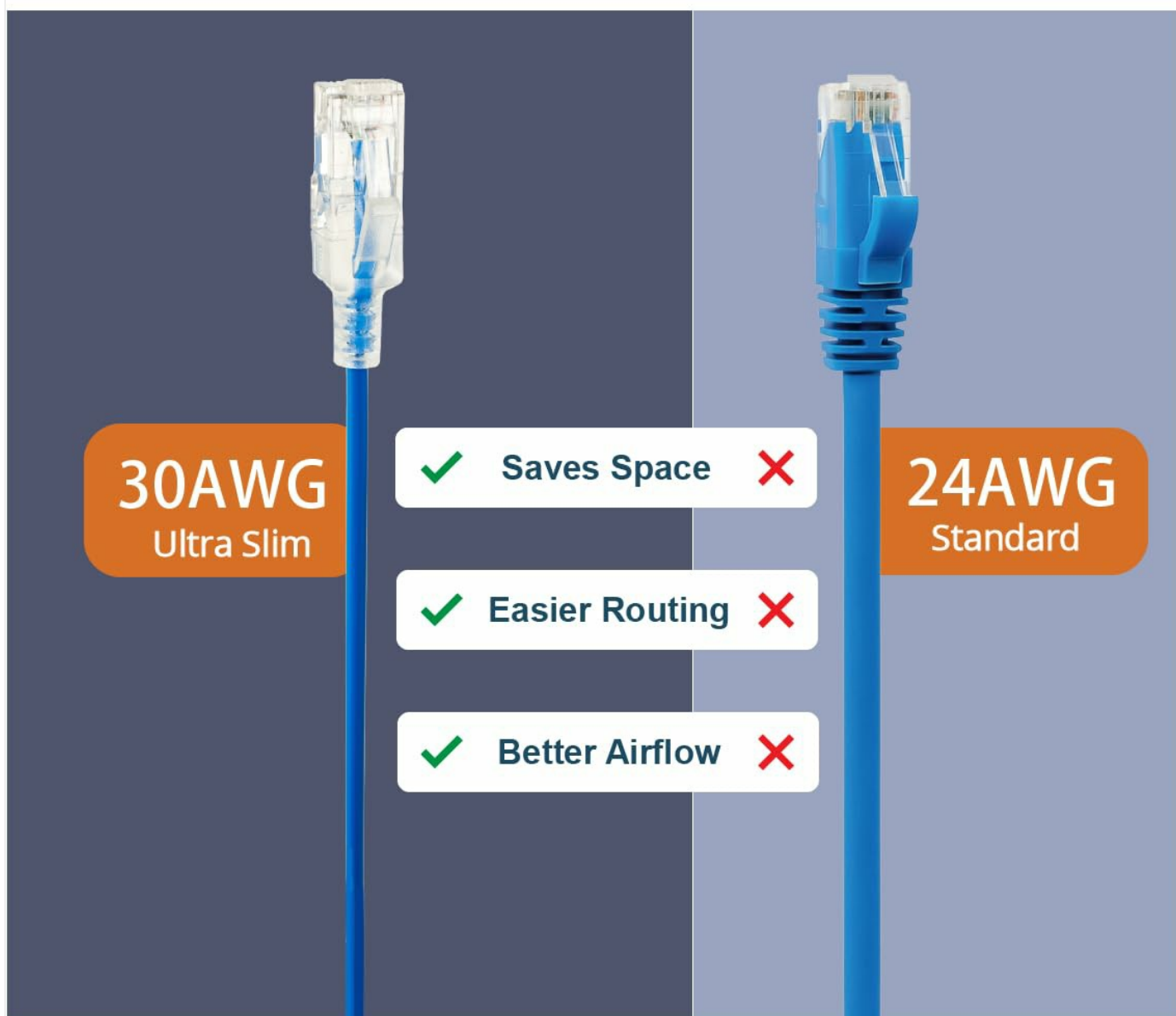


Image: Visual comparison illustrating the space-saving, easier routing, and improved airflow benefits of the 30AWG Ultra-Slim cable compared to a standard 24AWG cable.

## 3. SETUP AND INSTALLATION

1. **Identify Ports:** Locate the Ethernet ports (RJ45) on your network devices, such as your router, modem, computer, or gaming console. These ports are typically rectangular with a small clip.
2. **Connect First End:** Insert one end of the Tecmojo Cat6a Ethernet cable into an available Ethernet port on your primary network device (e.g., router or modem). Ensure the RJ45 connector clicks securely into place.
3. **Connect Second End:** Insert the other end of the Ethernet cable into the Ethernet port of the device you wish to connect to the network (e.g., computer, Xbox, network switch). Again, ensure a secure click.
4. **Verify Connection:** Most network devices have LED indicators next to the Ethernet port. A solid or blinking light typically indicates a successful network connection.

# Cat6A High Speed 10G Performance



Gold-plated connector



Supports Up to 10Gbps Network Speed

Image: A Tecmojo Cat6a Ethernet cable being connected to a router, demonstrating the secure fit of the gold-plated RJ45 connector for 10 Gigabit performance.

# Clean Fit for Any Space in Your Network

Ultra-Slim Design with Multiple Length Options



Image: Ultra-slim Tecmojo Cat6a cables organized within a patch panel, illustrating how the design allows for a clean and efficient setup in network racks.

## 4. OPERATING INSTRUCTIONS

Once connected, the Tecmojo Cat6a Ethernet cable facilitates data communication between your devices and the network. It operates passively, transmitting data signals without requiring external power or configuration. The cable supports full-duplex communication, allowing data to be sent and received simultaneously at speeds up to 10Gbps.

- **High-Speed Networking:** Utilize the cable for applications requiring high bandwidth, such as online gaming, 4K video streaming, large file transfers, and connecting to network-attached storage (NAS) devices.
- **Power over Ethernet (PoE):** This cable is compatible with PoE devices, allowing both data and power to be transmitted over a single cable, simplifying installations for devices like IP cameras or VoIP phones (requires PoE-enabled network equipment).

Your browser does not support the video tag.

Video: An official Tecmojo video demonstrating the ultra-slim design of the Cat6a Ethernet patch cable and its ease of use in tight spaces, highlighting its 10G transmission speed.

## 5. MAINTENANCE AND CARE

- **Avoid Sharp Bends:** Do not bend the cable sharply, especially near the connectors, as this can damage the internal wires and affect performance.
- **Protect Connectors:** Keep the RJ45 connectors clean and free from dust or debris. If necessary, use compressed air to gently clean the ports.
- **Proper Storage:** When not in use, coil the cable loosely. Avoid tangling or knotting the cable.
- **Environmental Conditions:** Store and use the cable in a dry environment, away from extreme temperatures and direct sunlight.

## 6. TROUBLESHOOTING

If you experience network connectivity issues, consider the following troubleshooting steps:

1. **Check Connections:** Ensure both ends of the Ethernet cable are securely plugged into their respective ports. Listen for a click when inserting the RJ45 connector.
2. **Inspect Cable:** Visually inspect the cable for any signs of physical damage, such as cuts, kinks, or frayed connectors. If damage is present, replace the cable.
3. **Restart Devices:** Power cycle your network devices (modem, router, computer). Unplug them from power for 30 seconds, then plug them back in and wait for them to fully restart.
4. **Test with Another Cable/Port:** If possible, try using a different Ethernet cable or connecting to a different port on your router/switch to determine if the issue lies with the cable, port, or device.
5. **Verify Network Settings:** Ensure your device's network settings are correctly configured (e.g., DHCP enabled for automatic IP address assignment).

## 7. SPECIFICATIONS

Feature	Detail
Brand	Tecmojo
Model Number	16112248B
Cable Type	Cat6a Ethernet
Length	30ft
Wire Gauge	30AWG
Conductor Material	100% Pure Copper
Data Transfer Speed	Up to 10Gbps
Bandwidth	550MHz
Connector Type	RJ45 (Gold-plated)
Jacket Material	Flexible PVC
Certification	UL Listed
Color	Blue
Compatible Devices	Laptop, Modem, Personal Computer, Printer, Router, Switches, NAS, VoIP phones, PoE devices, Xbox

# UL Listed for Proven Safety and Quality

Tested & Certified for Long-Term Network Reliability

**LINKWARE™ PC**  
CABLE TEST MANAGEMENT SOFTWARE

**Cable ID: 16112248B**

**Test Limit: TIA Cat 6A Channel (+All)**

Limita Version: V7.7  
Date / Time: 12/30/2025 16:55:54  
Headroom 10.1 dB (NEXT 4.5-7.8)  
Cable Type: Cat 6A U/UTP  
WVP: 66.2%

Main: Versiv  
S/N: 1903123  
Software Version: V6.8 Build 6  
Calibration Date: 03/13/2025  
Adapter: DSX-9000 (DSX-CHA804)  
S/N: 16273816

Remote: Versiv  
S/N: 1852291  
Software Version: V6.8 Build 6  
Calibration Date: 03/13/2025  
Adapter: DSX-9000R (DSX-CHA804)  
S/N: 20255077

**Test Summary: PASS**

Length (m), Limit 100.0	(Pair 1,2)	9.4
Prop. Delay (ns), Limit 555	(Pair 4,5)	48
Delay Skew (ns), Limit 50	(Pair 4,5)	2
Resistance (ohms), Limit 25.00	(Pair 4,5)	6.00
Resist. Unbal. (ohms), Limit 0.200	(Pair 4,5)	0.059
Resist. P2P Unbal. (ohms), Limit 0.200	(Pair 4,5-7,8)	0.084
Insertion Loss Margin (dB)	(Pair 3,6)	38.3
Frequency (MHz)	(Pair 3,6)	500.0
Limit (dB)	(Pair 3,6)	49.3

Worst Case Margin		Worst Case Value		
	MAIN	SR	MAIN	SR
<b>PASS</b>				
Worst Pair	134.3	437.5	137.8	123.0
<b>NEXT (dB)</b>	10.6	10.1	17.9	17.9
Freq. (MHz)	7.8	66.3	457.0	469.0
Limit (dB)	58.4	43.0	27.2	26.9
Worst Pair	1.9	4.5	7.8	3.8
<b>PS NEXT (dB)</b>	12.3	12.4	18.2	17.7
Freq. (MHz)	7.8	66.3	458.0	472.0
Limit (dB)	55.8	40.2	24.2	23.9
<b>PASS</b>				
Worst Pair	431.3	734.3	123.3	33.1
<b>ACR-F (dB)</b>	21.6	21.5	23.3	23.9
Freq. (MHz)	7.3	6.1	498.0	498.0
Limit (dB)	46.1	47.5	9.3	9.3
Worst Pair	7.8	7.5	3.8	1.2
<b>PS ACR-F (dB)</b>	22.9	22.7	24.8	25.9
Freq. (MHz)	1.1	1.1	500.0	489.0
Limit (dB)	59.2	59.2	8.3	6.5
<b>NA</b>				
Worst Pair	15.2	16.4	54.5	55.0
<b>ACR-N (dB)</b>	7.8	7.8	458.0	470.0
Limit (dB)	52.7	52.7	-19.9	-20.8
Worst Pair	4.5	4.5	7.8	3.8
<b>PS ACR-N (dB)</b>	16.9	17.2	54.6	54.9
Freq. (MHz)	7.8	3.4	458.0	473.0
Limit (dB)	50.1	57.9	-22.9	-24.0
<b>PASS</b>				
Worst Pair	1.8	7.8	7.8	7.8
<b>RL (dB)</b>	10.5	12.5	10.5	12.6
Freq. (MHz)	61.5	60.8	61.5	61.3
Limit (dB)	14.1	14.2	14.1	14.1

Compliant Network Standards:  
10GBASE-T  
10GBASE-T  
10GBASE-T  
10GBASE-T  
ATM-25  
ATM-155  
TR-16 Active

100BASE-TX  
2.5GBASE-T  
ATM-25  
100V3-AnyLan  
TR-4  
100BASE-T4  
90BASE-T  
ATM-64

Project: DEFAULT  
8000.flw

## CERTIFICATE OF COMPLIANCE

Certificate Number: 20180619-E496365  
Report Reference: E496365-20180615  
Issue Date: 2018-JUNE-19

Issued to: Ningbo Feynman Cable Co Ltd  
No. 9, Binhai 3rd Avenue, Hangzhou Bay New Zone  
Ninbo  
Zhejiang 315336 CHINA

This is to certify that representative samples of COMMUNICATIONS CABLE Types CMX, CM and CMR, rated 60° or 75° C. Have been investigated by UL in accordance with the Standard(s) indicated on this Certificate.

Standard(s) for Safety: UL 444 & CSA C22.2 No. 214, Communications Cables  
Additional Information: See the UL Online Certifications Directory at [www.ul.com/database](http://www.ul.com/database) for additional information

Only those products bearing the UL Certification Mark should be considered as being covered by UL's Certification and Follow-Up Service.  
Look for the UL Certification Mark on the product.

*Ramirez*  
Ramon Ramirez, Director North American Certification Program  
UL LLC  
Any information and documentation bearing the UL Mark services are provided on behalf of UL LLC (UL) or any authorized licensee of UL. For questions, please contact your UL Customer Service Representative at [1888.UL.CERT@ul.com](mailto:1888.UL.CERT@ul.com)

Page 1 of 1

Image: UL Certificate of Compliance for the Tecmojo Cat6a cable, verifying its adherence to safety and material quality standards.

## 8. WARRANTY AND SUPPORT

The Tecmojo UL Listed Ultra-Slim Cat6a Ethernet Cable comes with a **3-Year Manufacturer Warranty**. For technical support, warranty claims, or additional product information, please visit the official Tecmojo store or contact customer service through the details provided on your purchase receipt.  
Official Tecmojo Store: [Tecmojo Official Store](#)