

Manuals+

[Q & A](#) | [Deep Search](#) | [Upload](#)

manuals.plus /

- › [OWLNV](#) /
- › [OWLNV N9 3-10.5X Digital Night Vision Scope Instruction Manual](#)

OWLNV N9

OWLNV N9 3-10.5X Digital Night Vision Scope Instruction Manual



INTRODUCTION

This manual provides detailed instructions for the proper use and maintenance of your OWLNV N9 3-10.5X Digital Night Vision Scope. Please read this manual thoroughly before operating the device to ensure optimal performance and safety.



Image: The OWLNV N9 3-10.5X Digital Night Vision Scope, a versatile device for day and night observation.

SAFETY INFORMATION

- Do not look directly into the sun through the device.
- Avoid direct exposure of the infrared illuminator to human or animal eyes.
- Keep the device away from extreme temperatures and humidity.
- Store the device in a dry, cool place when not in use.
- Use only approved batteries and charging accessories.

PACKAGE CONTENTS

- OWLNV N9 Digital Night Vision Scope
- USB Charging Cable

- Mounting Accessories (plastic rings, connection sleeve)
- User Manual
- Rechargeable Battery (pre-installed or separate)

PRODUCT OVERVIEW



Image: Detailed diagram illustrating the various components of the OWLNV N9 Digital Night Vision Scope.

1. Eyepiece Connection Sleeve

2. Eyepiece Focus Adjustment Ring
3. Logo
4. Red Dot Adjustment Holes
5. Type-C Charging Port
6. TF Card Slot
7. Stretchable IR Illuminator
8. Plastic Ring
9. Red Dot
10. Battery Compartment
11. Lens
12. Screen Display
13. Fastening Buckle
14. Power / Sleep Key
15. Indicator Light
16. Menu / Playback Key
17. WiFi / Zoom Key
18. Red Dot Key
19. OK / Record / Photo Key
20. B&W / IR Illuminator Key

SETUP

1. Battery Installation and Initial Charge

Ensure the battery is correctly installed and fully charged before first use. If the device does not power on, check for a protective adhesive strip on the battery contacts and remove it.

- Open the battery compartment (refer to Product Overview, item 10).
- Insert the provided 3200mAh rechargeable battery, ensuring correct polarity.
- If a protective adhesive strip is present on the battery's contact point, remove it before insertion.
- Close the battery compartment.
- Connect the device to a power source using the Type-C charging cable (refer to Product Overview, item 5). The indicator light (item 15) will show charging status.

2. Mounting to a Rifle Scope

The N9 Digital Night Vision Scope is designed to attach to the eyepiece of your existing rifle scope.

1. Wrap the eyepiece of your rifle scope with a PVC tape for a secure fit.
2. Select a plastic ring of appropriate thickness to ensure a snug fit between the rifle scope's inner wall and the sleeve's outer wall (gap less than 0.1mm).
3. Insert the eyepiece of your rifle scope into the connection sleeve (item 1) of the N9 unit. Ensure the reticle of your rifle scope is upright.
4. Fasten the buckle (item 13) upward to secure the connection.

Your browser does not support the video tag.

Video: Official OWLNV N9 Screen Vision instruction video demonstrating installation, reticle adjustment, and focus adjustment.

3. Eyepiece Focus Adjustment

Rotate the Eyepiece Dioptic Adjustment Ring (item 2) until you achieve a clear view of your rifle scope's reticle icon on the N9 screen.



Image: A hand rotating the 360-degree eyepiece focus adjustment ring for clear reticle visibility.

4. Objective Lens Focus Adjustment

Rotate the Objective Lens Ring (item 11) on the N9 unit until you obtain a clear and well-focused image of your target.

5. Reticle Adjustment (Zeroing)

To align the N9's display with your rifle scope's reticle:

1. Go to the Menu (item 16).
2. Select and enter "Reticle Adjustment".
3. Adjust the x-axis and y-axis by pressing the Up/Down and Left/Right buttons (part of item 19, OK/Record/Photo Key

cluster).

4. Press OK (item 19) to save after the cross-hair of your rifle scope is center-aligned on the N9 screen.

OPERATING INSTRUCTIONS

1. Power On/Off

- To power on, press the Power/Sleep Key (item 14) once.
- To power off, press and hold the Power/Sleep Key (item 14) for a few seconds.

2. Day and Night Vision Modes

The device supports both day and night vision modes.

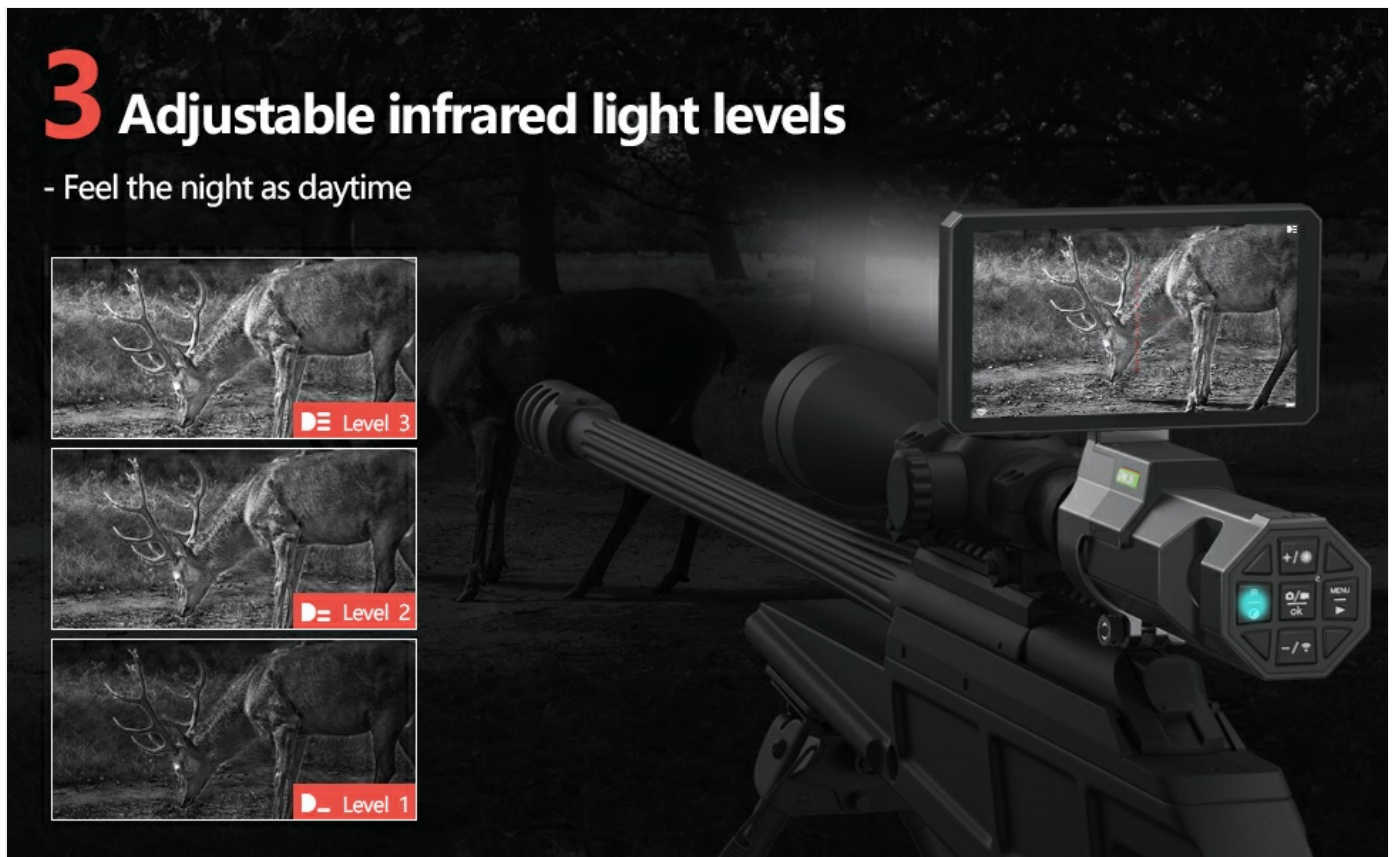


Image: Visual comparison of the OWLNV N9's performance in daytime and nighttime conditions.

- The device automatically switches between day (color) and night (black and white) modes based on ambient light.
- You can manually toggle between B&W (Night) and Color (Day) modes using the B&W / IR Illuminator Key (item 20).

3. IR Illuminator Adjustment

The integrated 850nm IR illuminator (item 7) enhances visibility in low-light conditions.

5W 850nm Laser Infrared Light

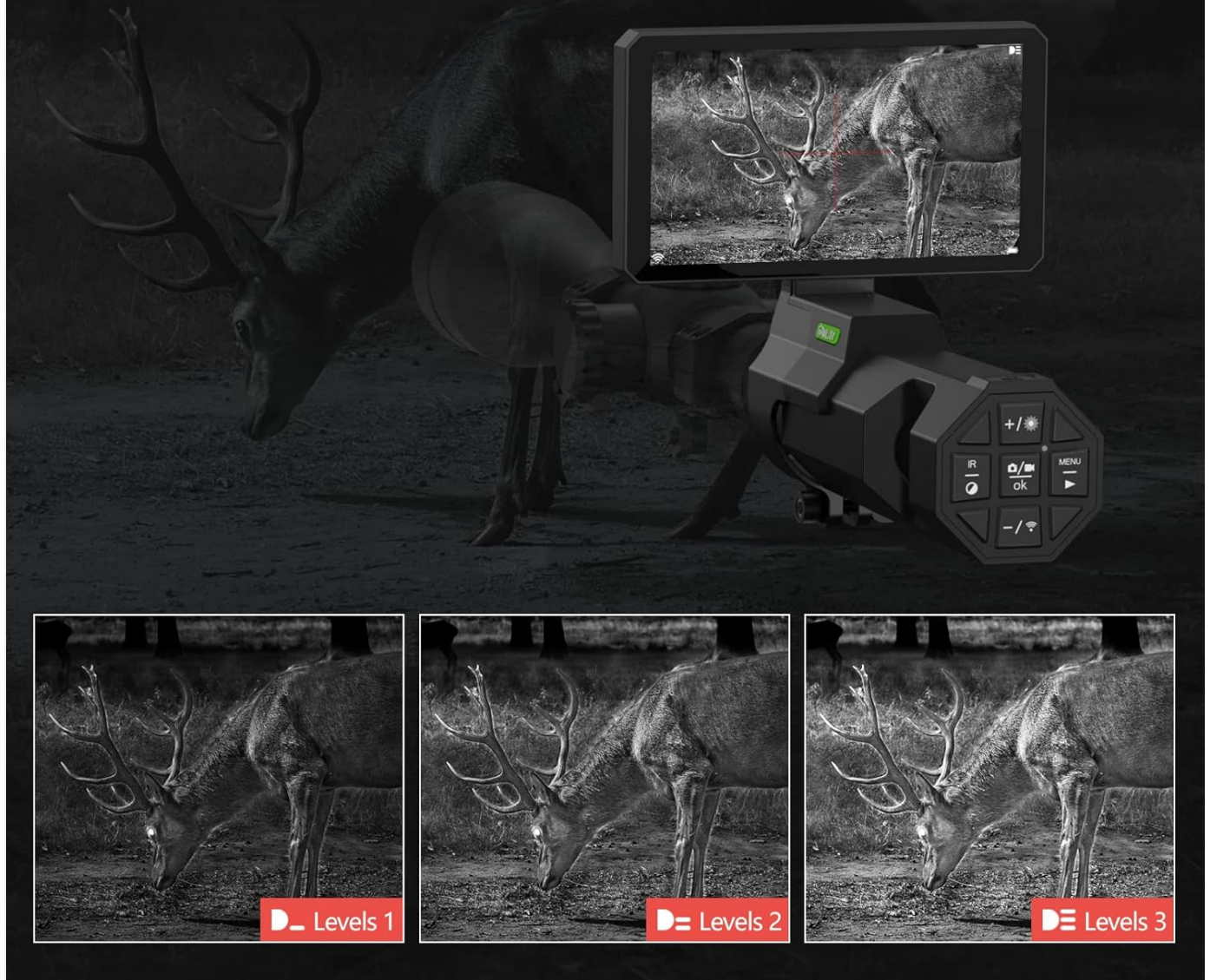


Image: Demonstrates three adjustable levels of infrared illumination for varying distances and conditions.

- Press the B&W / IR Illuminator Key (item 20) to cycle through three brightness levels of the IR illuminator.
- Adjust the beam of the stretchable IR illuminator (item 7) by extending or retracting it.

4. Recording Video and Taking Photos

The N9 supports HD 1080P photo and video recording.

Record Video and Take Picture Day and Night

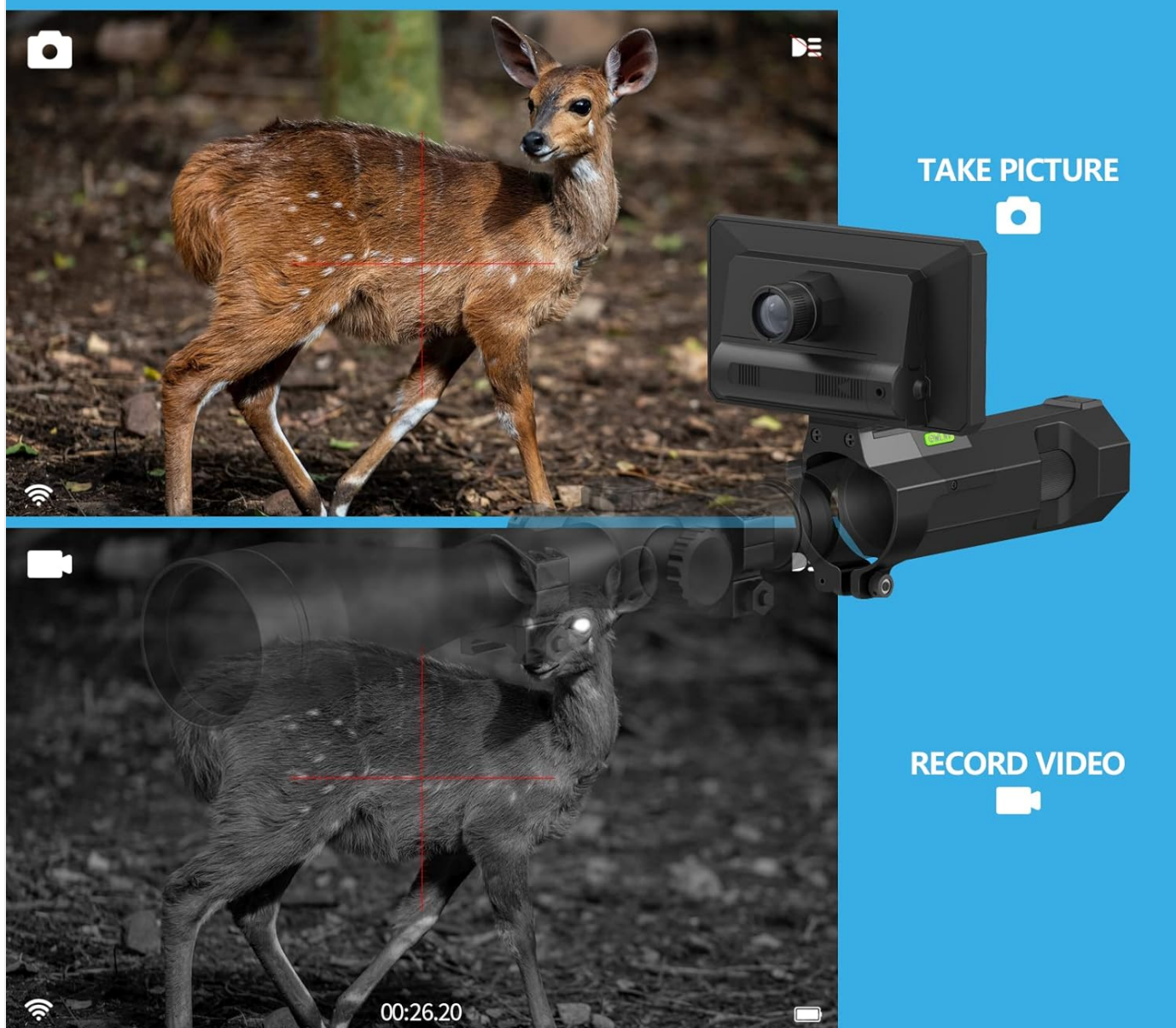


Image: Visual guide on how to capture photos and record videos using the device.

- Insert a TF card (Max 128GB) into the TF Card Slot (item 6) before recording.
- Press the OK / Record / Photo Key (item 19) once to take a photo.
- Press and hold the OK / Record / Photo Key (item 19) to start video recording. Press again to stop.

5. WiFi Connectivity and Digital Zoom

- The device features built-in WiFi for transferring videos and images to your smartphone. Refer to the specific app instructions for connection.
- Use the WiFi / Zoom Key (item 17) to activate the 3x-10.5x digital zoom function, allowing for closer observation of distant targets.

6. Loop Recording



Image: Explains the automatic loop recording feature, allowing settings for 1, 3, or 5-minute segments.

- The device supports automatic loop recording, which can be set for 1, 3, or 5-minute intervals via the menu.
- When the TF card is full, older recordings will be overwritten. Back up important content regularly.

MAINTENANCE

- **Cleaning Lenses:** Use a soft, lint-free cloth specifically designed for optical lenses. Do not use abrasive materials or harsh chemicals.
- **Cleaning Body:** Wipe the device body with a soft, damp cloth. Avoid getting moisture into electronic components.
- **Storage:** Store the device in its original packaging or a protective case in a cool, dry environment. Remove the battery if storing for extended periods.
- **Battery Care:** Recharge the battery regularly, even if not in use, to maintain its lifespan.

TROUBLESHOOTING

Problem	Possible Cause	Solution
Device does not power on.	Battery not charged or improperly installed. Protective adhesive strip on battery contacts.	Ensure battery is fully charged and correctly inserted. Check for and remove any protective adhesive strip on the battery's contact points.
Image is blurry or out of focus.	Eyepiece or objective lens not properly focused.	Adjust the Eyepiece Dioptic Adjustment Ring and the Objective Lens Ring until the image is clear.

Problem	Possible Cause	Solution
Night vision image is too dark.	IR illuminator is off or set to low brightness.	Activate the IR illuminator and cycle through its brightness levels using the B&W / IR Illuminator Key.
Cannot record video or take photos.	No TF card inserted or card is full/corrupted.	Insert a compatible TF card. Format the card if necessary (this will erase all data). Ensure sufficient storage space.
WiFi connection issues.	Incorrect app usage or device not in WiFi mode.	Refer to the dedicated app instructions for WiFi connection. Ensure the device's WiFi function is activated.

SPECIFICATIONS

Feature	Specification
Brand	OWLNV
Model	N9
Screen	5" IPS Screen (1280*720 HD)
Record/Photo Resolution	HD 1080P
IR Illuminator	5W 850nm Infrared Light, 3 levels brightness
Viewing Range (Night)	Up to 300 meters (328 yards) in complete darkness
Digital Zoom	3x-10.5x
Connectivity	Built-in WiFi
Storage	Supports TF card (Max 128GB)
Material	Aluminum
Item Weight	1.1 Pounds
Recoil Resistance	6000J

WARRANTY AND SUPPORT

The OWLNV N9 Digital Night Vision Scope comes with a**2-year warranty**. For technical support, warranty claims, or any inquiries, please contact OWLNV customer service through the official channels provided at the point of purchase or on the OWLNV brand store.

OWLNV is committed to providing professional night vision products and offers return and exchange services within the warranty period.



