

## Manuals+

[Q & A](#) | [Deep Search](#) | [Upload](#)

[manuals.plus](#) /

› [Jocoevol](#) /

› [Jocoevol 0818 Fluted 6-Drawer Dresser User Manual](#)

### Jocoevol 0818 Fluted dresser

# Jocoevol 0818 Fluted 6-Drawer Dresser User Manual

Model: 0818 Fluted Dresser | Brand: Jocoevol

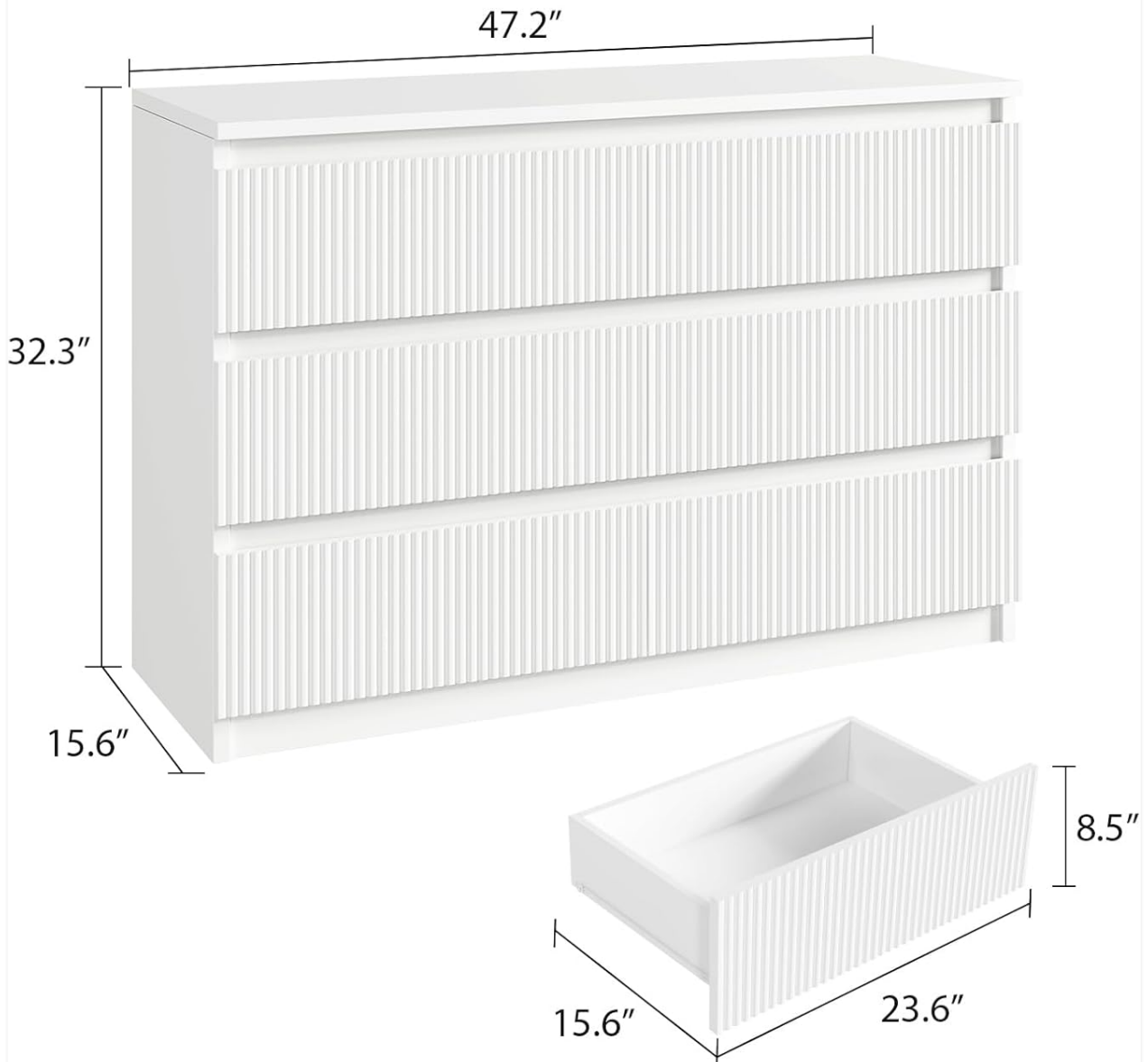
## 1. INTRODUCTION

---

This manual provides detailed instructions for the assembly, operation, and maintenance of your Jocoevol 0818 Fluted 6-Drawer Dresser. Designed with a modern minimalist aesthetic, this dresser offers ample storage and a sleek appearance for your bedroom, hallway, or living room. Please read this manual thoroughly before beginning assembly or use to ensure proper setup and longevity of your product.

# Dimensions

Overall: 47.2"W\* 15.6"D\* 32.3"H



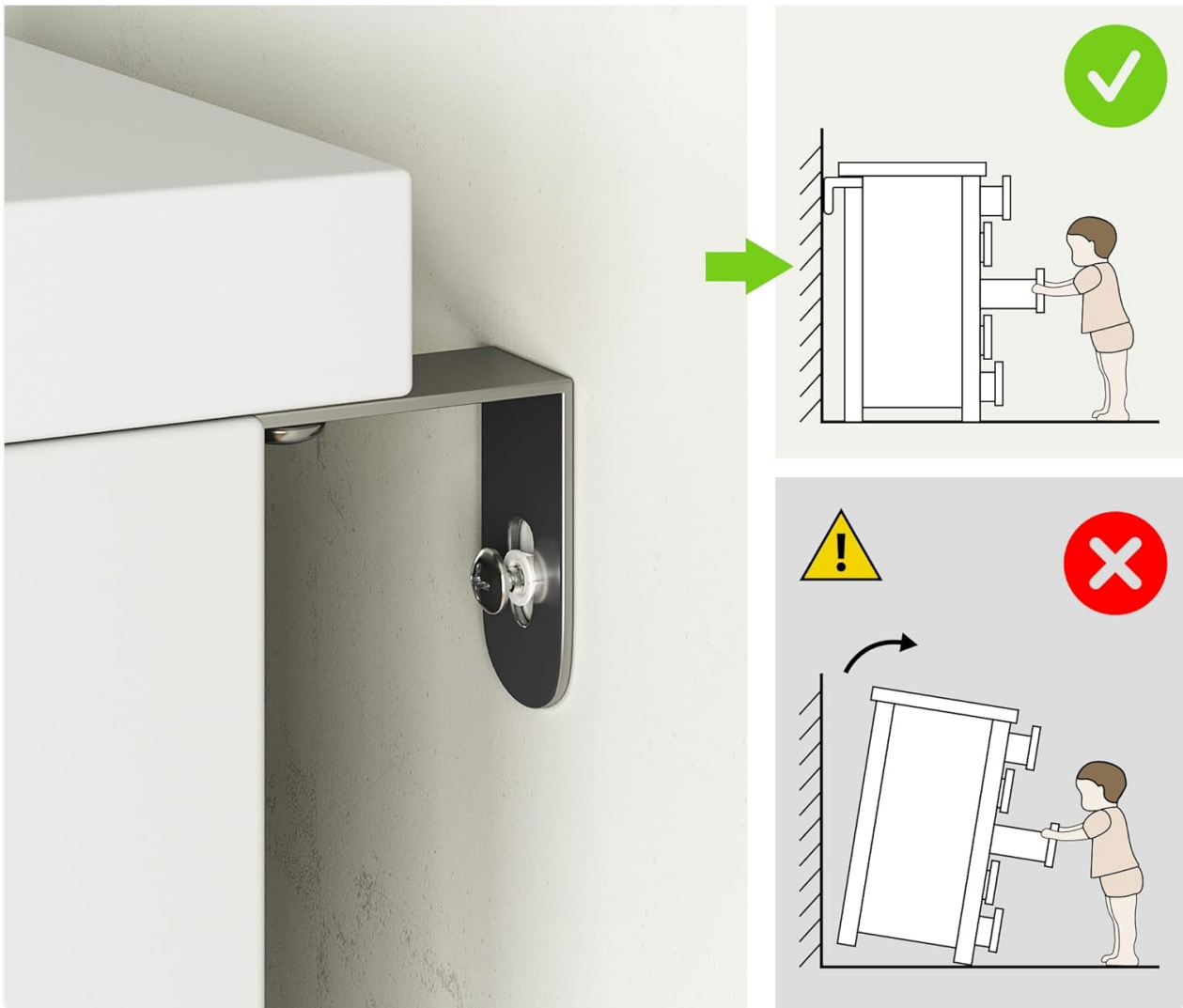
*Image: The Jocoevol 0818 Fluted 6-Drawer Dresser in Pure White.*

## 2. SAFETY INFORMATION

For your safety and to prevent injury, it is crucial to follow all safety guidelines. This dresser is equipped with an anti-tip kit for enhanced stability. Always secure the dresser to the wall using the provided anti-tip kit to prevent accidental tipping, especially in households with children or pets.

# Anti-collapse Design

Protect your kids and pets



*Image: Anti-collapse design with anti-tip kit installation instructions.*

- Always install the anti-tip kit as instructed.
- Do not allow children to climb on drawers or the dresser.
- Place heavier items in lower drawers to improve stability.
- Ensure the dresser is placed on a flat, stable surface.

## 3. PACKAGE CONTENTS

Before beginning assembly, verify that all parts and hardware are present. Refer to the included assembly guide for a complete list of components. If any parts are missing or damaged, please contact Jocoevol customer support.

The package typically includes:

- Dresser panels (top, bottom, sides, back, drawer components)
- 6 fluted drawer fronts
- Drawer slides and runners
- Assembly hardware (screws, dowels, cam locks, etc.)
- Anti-tip kit

- Assembly instruction manual

## 4. ASSEMBLY INSTRUCTIONS

---

Assembly of the Jocoevol 0818 Fluted 6-Drawer Dresser requires careful attention to detail. It is recommended to have two adults for assembly. Follow the step-by-step instructions provided in the included manual. The process involves attaching panels, installing drawer slides, assembling drawers, and finally securing the dresser with the anti-tip kit.

For a visual guide, please refer to the official assembly videos below:

Your browser does not support the video tag.

Video: Detailed assembly guide for the 6-Drawer Dresser.

Your browser does not support the video tag.

Video: Overview of the White 6-Drawer Dresser and its assembly process.

## 5. PRODUCT FEATURES & USAGE

---

The Jocoevol 0818 Fluted 6-Drawer Dresser is designed for both aesthetics and functionality. It features distinctive wave-like fluted panels and sleek hidden handles, providing a modern and unique look.



## Hand-carved Wavy Patterns

Enhancing the stylish modern  
appeal and visual depth of your space

## Drawers

Smoother pull-out



## Wood Grain Finish

waterproof and wear-resistant

*Image: Detail of fluted drawer fronts and smooth top.*

The six spacious drawers glide smoothly on high-quality metal slide rails, ensuring easy and quiet operation. Each drawer offers ample space for organizing clothes, accessories, or other personal items.

# 6-DRAWER DRESSER

Meet Your Storage Needs

This dresser can hold:



100-120



60-80



90-120



12-18



60-75



80-100

*Image: Drawer capacity illustration.*

The thickened dresser top is ideal for displaying decorative items, photos, or lamps, helping to keep your space neat and tidy.

## 6. CARE AND MAINTENANCE

To maintain the appearance and longevity of your dresser, follow these care instructions:

- **Cleaning:** Wipe surfaces with a soft, damp cloth. Avoid harsh chemicals or abrasive cleaners, as they may damage the finish.
- **Spills:** The dresser top is waterproof. Wipe up spills immediately with a dry cloth to prevent staining.
- **Scratches:** The surface is scratch-resistant, but avoid dragging sharp or heavy objects across it to prevent damage.
- **Sunlight:** Avoid prolonged exposure to direct sunlight to prevent fading.

## 7. SPECIFICATIONS

Detailed specifications for the Jocoevol 0818 Fluted 6-Drawer Dresser:



*Image: Dresser dimensions diagram.*

Feature	Detail
Brand	Jocoevol
Model Name	0818 Fluted dresser
Color	Pure White
Material	Engineered Wood
Finish Type	Painted
Product Dimensions (L x W x H)	47.3" x 15.7" x 31.6"
Number of Drawers	6
Item Weight	30 Pounds
Mounting Type	Floor Mount
Additional Features	Scratch Resistant
Required Assembly	Yes

## 8. WARRANTY AND SUPPORT

This Jocoevol dresser comes with an Extended Warranty. For specific details regarding the warranty period

and coverage, please refer to the documentation included with your purchase or contact Jocoevol customer service.

If you encounter any issues during assembly or use, or if you have questions about your product, please contact the manufacturer, Jocoevol, for assistance. They are committed to providing excellent service and typically reply within 24 hours.