



[Manuals.plus](#) /

> [iPormis](#) /

> iPormis Full Size Upholstered Platform Bed Frame with Vertical Linen Headboard (Model I870101288B4) - User Manual

iPormis I870101288B4

iPormis Full Size Upholstered Platform Bed Frame with Vertical Linen Headboard (Model I870101288B4) - User Manual

Brand: iPormis

1. IMPORTANT SAFETY INFORMATION

Please read all instructions carefully before assembly and use. Keep this manual for future reference.

- **Weight Limit:** Do not exceed the maximum weight capacity of **800 pounds** for this bed frame.
- **Assembly:** Assembly should be performed by two adults. Ensure all parts are correctly aligned and fasteners are tightened securely before use.
- **Tools:** Use only the provided tools or appropriate hand tools. Do not use power tools as they may overtighten and damage components.
- **Placement:** Place the bed frame on a level surface.
- **Maintenance:** Periodically check all fasteners to ensure they remain tight.
- **Children:** Keep small parts away from children during assembly to prevent choking hazards.

2. PACKAGE CONTENTS

Verify that all components are present before beginning assembly. If any parts are missing or damaged, please contact customer support.

Parts List:

No.	Description	Quantity
1	Headboard	1
2	Side Rail (Left)	1

No.	Description	Quantity
3	Side Rail (Right)	1
4	Headboard Leg (Left)	1
5	Headboard Leg (Right)	1
6	Footboard	1
7	Center Support Bar (Head)	1
8	Center Support Bar (Foot)	1
9	Wood Slats	2 sets
10	Center Support Leg (Adjustable)	2
11	Bed Leg (Footboard)	2
12	Side Rail Brackets	2
13	Metal Crossbar	2
14	Metal Support Leg (Short)	1
15	Metal Support Leg (Long)	2

Hardware List:

No.	Description	Quantity
A	M8x20 Bolt	6+1
B	M8x40 Bolt	10+1
C	M8x65 Bolt	4+1
D	M6x20 Bolt	4+1
E	M6x50 Bolt	1+1
F	M4 Allen Wrench	1

Note: Extra hardware pieces are included as spares.

3. ASSEMBLY INSTRUCTIONS

This bed frame is designed for easy assembly, typically taking two people approximately 30 minutes. Follow these steps carefully.

Assembly Video Guide:

Your browser does not support the video tag.

Official iPormis Platform Bed Frame Installation Video. This video demonstrates the step-by-step assembly process for the bed frame.

Step-by-Step Guide:

1. **Prepare the Headboard:** Attach Headboard Legs (4 & 5) to the Headboard (1) using Bolts D (M6x20). Ensure they are securely fastened.
2. **Assemble Side Rails:** Connect Side Rail (2) and Side Rail (3) using the Center Support Leg (10) and Bolts A (M8x20). Repeat for the other side rail.
3. **Attach Side Rail Brackets:** Secure Side Rail Brackets (12) to the assembled side rails using Bolts A (M8x20).
4. **Connect Headboard to Side Rails:** Align the assembled side rails with the Headboard Legs (4 & 5) and secure them using Bolts C (M8x65).
5. **Attach Footboard:** Connect the Footboard (6) to the other end of the side rails using Bolts C (M8x65).
6. **Install Center Support Bars:** Attach the Metal Crossbars (13) to the frame. Then, attach the Metal Support Legs (14 & 15) to the crossbars using Bolts B (M8x40) and E (M6x50).
7. **Place Wood Slats:** Unroll the Wood Slats (9) onto the bed frame. The slats are secured with Velcro fasteners for easy placement and to prevent movement.
8. **Final Check:** Ensure all bolts are tightened and the frame is stable before placing your mattress.

4. PRODUCT FEATURES

- **Engineered Stability:** Crafted from reinforced wood and metal slats, supporting up to 800 pounds. Wide bed legs distribute pressure for enhanced stability and long-term reliability.
- **Comfort and Style:** Features a built-in sponge for plush back support, upholstered in durable, easy-to-clean linen. Minimalist vertical stripes complement various decor styles.
- **Low-Profile Design:** A 6-inch low profile reduces fall risk and offers convenient clearance for robot vacuums, enhancing safety and ease of cleaning.
- **Noise-Free Operation:** Equipped with EVA noise-reducing strips on the slats and non-slip pads on the feet to eliminate noise and prevent floor scratches, ensuring undisturbed sleep.
- **Easy Assembly:** All parts and tools are conveniently packed in one box. Wood slats are secured with Velcro fasteners, allowing for quick assembly by two people in approximately 30 minutes.

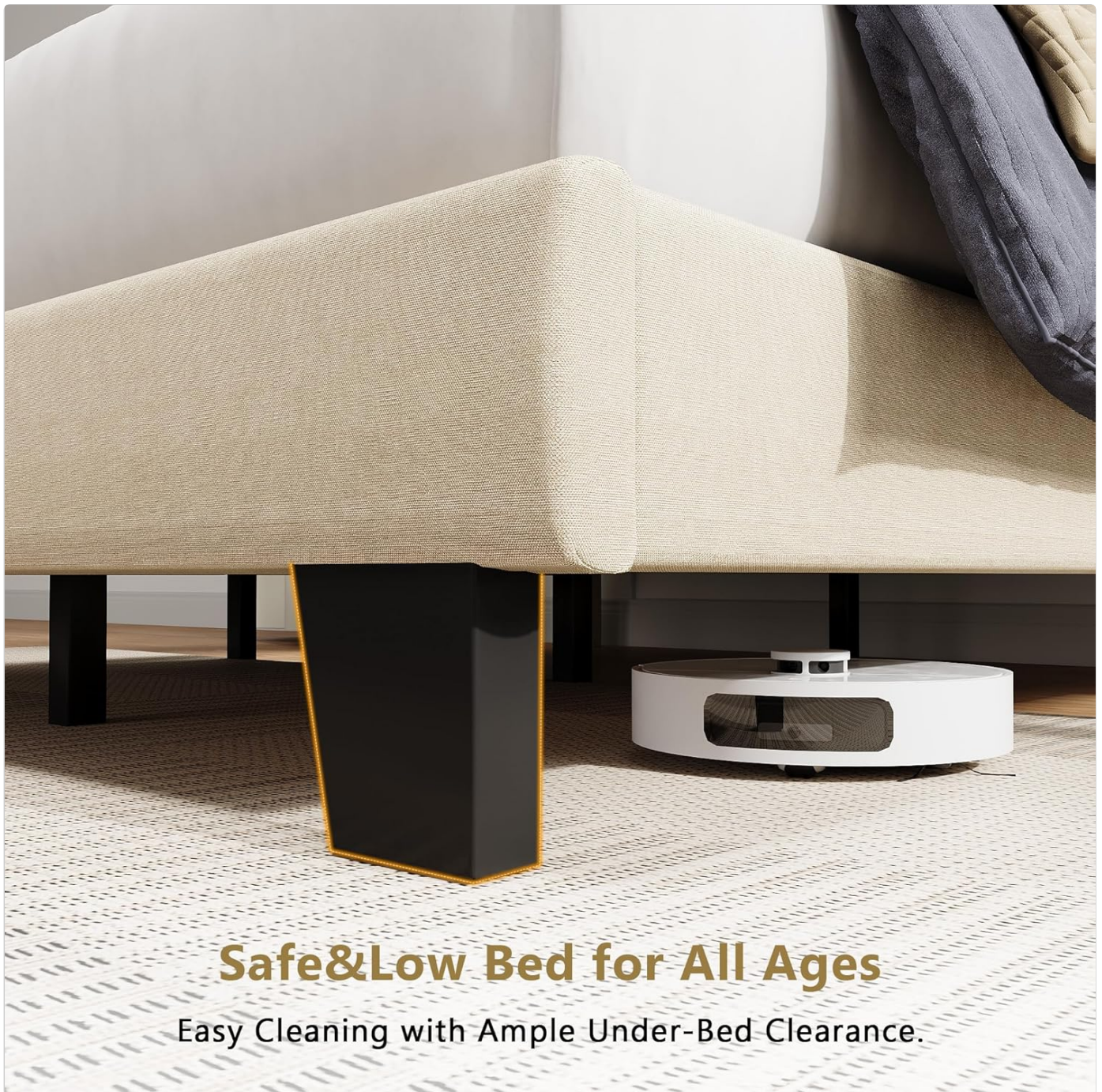
Soft-Touch Upholstered Headboard



Enduring Linen

High-Resilience Foam

Image: Soft-Touch Upholstered Headboard. This image highlights the quality of the linen fabric and high-resilience foam used in the headboard.



Safe&Low Bed for All Ages

Easy Cleaning with Ample Under-Bed Clearance.

Image: Safe & Low Bed for All Ages. This image illustrates the bed's low height and the ample under-bed clearance for easy cleaning with a robot vacuum.

Prevents Sagging For Ultimate Durability

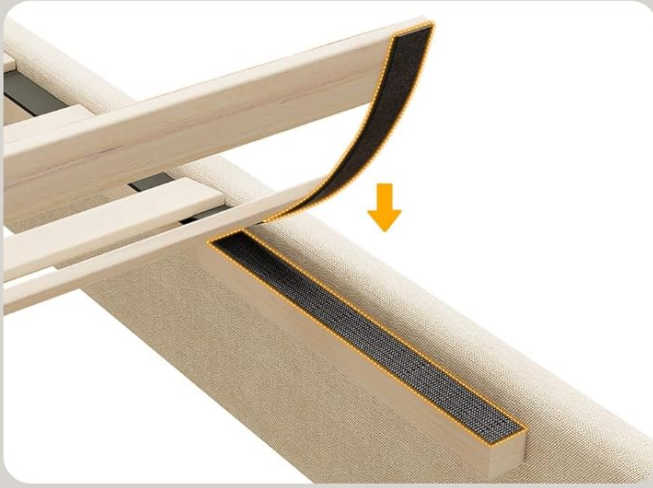


Strong Metal Frame



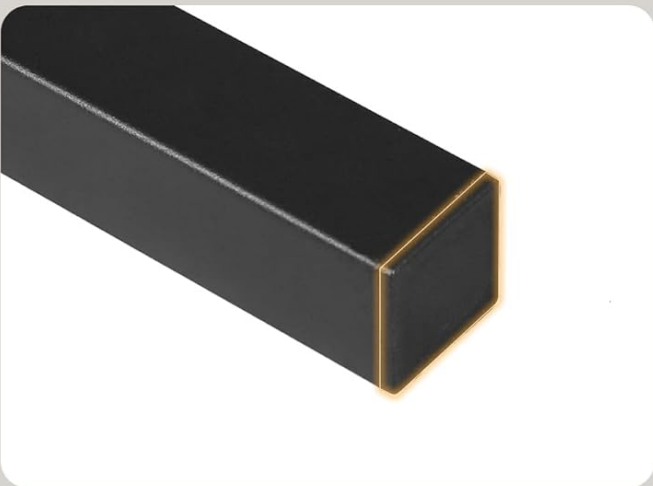
Reinforced Side Panel

Image: Prevents Sagging for Ultimate Durability. This image details the strong metal frame and reinforced side panels designed for long-lasting support.



Velcro Makes
Assembly Effortless

Eliminates Squeaks
For Peaceful Sleep



Avoids Floor Scratches,
Enhances Stability

Image: Velcro Makes Assembly Effortless. This image shows the Velcro fasteners for slats, noise-reducing strips for quiet sleep, and non-slip pads to protect floors and enhance stability.

5. SPECIFICATIONS

Feature	Detail
Size	Full
Color	Beige
Material	Wood, Metal, Linen Fabric
Product Dimensions (L x W x H)	76.5" x 56" x 40"
Headboard Material	Linen

Feature	Detail
Style	Modern, Rectangular with Vertical Headboard
Special Features	Slatted, Vertical Linen Headboard, Wide Legs
Box Spring Required	No
Maximum Weight Recommendation	800 Pounds
Item Weight	57.3 Pounds
Assembly Required	Yes (Approx. 30 minutes, 2 people)
Model Number	I870101288B4
Brand	iPormis

Product Dimensions



Image: Product Dimensions. This diagram provides detailed measurements for the Full Size bed frame, including overall dimensions,

6. CARE & MAINTENANCE

- **Cleaning the Upholstery:** For general cleaning, gently vacuum the linen fabric to remove dust. For spills, blot immediately with a clean, damp cloth. Avoid harsh chemicals or abrasive cleaners.
- **Frame Maintenance:** Periodically inspect all bolts and connections to ensure they are tight. Re-tighten if necessary to maintain stability and prevent squeaking.
- **Avoid Direct Sunlight:** Prolonged exposure to direct sunlight may cause the fabric color to fade.
- **Moving the Bed:** When moving the bed, lift it rather than dragging it to prevent damage to the frame and your flooring.

7. TROUBLESHOOTING

Problem	Possible Cause	Solution
Bed Squeaks	Loose bolts or connections.	Check and tighten all bolts. Ensure slats are properly seated and the noise-reducing strips are intact.
Bed Feels Unstable	Uneven floor or loose connections.	Ensure the bed is on a level surface. Verify all bolts are securely tightened. Check that all support legs are making firm contact with the floor.
Slats Moving	Velcro not properly engaged or damaged.	Ensure the Velcro strips on the slats and frame are clean and fully engaged. If damaged, contact customer support for replacement parts.
Missing Parts	Packaging error.	Carefully re-check all packaging materials. If parts are genuinely missing, contact iPormis customer support with your purchase details.

8. WARRANTY & SUPPORT

For any questions, concerns, or to report missing/damaged parts, please contact iPormis customer support. Keep your purchase receipt and model number (I870101288B4) handy for faster service.

While specific warranty details are not provided in this manual, iPormis is committed to customer satisfaction. Please refer to your purchase documentation or the seller's website for warranty information.

You can visit the official iPormis store for more products and support: [iPormis Store](#)

