

Polarlander AV252B

PolarLander AV252B Universal 1-DIN Car Audio Player User Manual

INTRODUCTION

This manual provides detailed instructions for the installation, operation, and maintenance of your PolarLander AV252B Universal 1-DIN In-Dash Car Audio Player. Please read this manual thoroughly before using the product to ensure proper function and safety. Keep this manual for future reference.

SAFETY INFORMATION

- Ensure all wiring is correctly connected to prevent damage to the unit or vehicle. Incorrect wiring can cause fire or electrical shock.
- Always connect the unit to a 12V DC power supply with a negative ground.
- Do not operate the unit in a manner that distracts you from driving. Always prioritize road safety.
- Avoid exposing the unit to extreme temperatures, direct sunlight, or high humidity.
- Do not attempt to disassemble or modify the unit. Refer all servicing to qualified personnel.

PACKAGE CONTENTS

Verify that all items are present in the package:

- 1 x PolarLander AV252B 12V Bluetooth Vehicle MP3 Audio Player
- 1 x English User Manual (this document)
- Wiring Harness
- Mounting Hardware (if applicable)

PRODUCT OVERVIEW

The PolarLander AV252B is a versatile 1-DIN in-dash car audio player featuring Bluetooth connectivity, FM radio, USB, SD card, and AUX-in support. It is designed for easy integration into most vehicles with a standard 1-DIN slot.

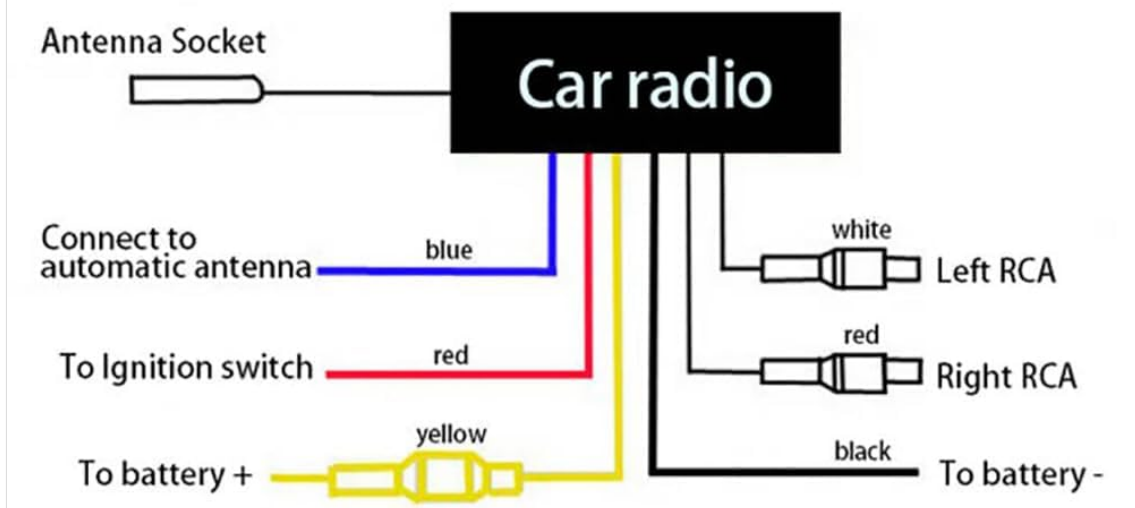


Image: Front view of the PolarLander AV252B car audio player, showing the display, control knob, and various buttons.

Front Panel Controls and Connections



Image: Diagram illustrating the front panel controls of the AV252B unit, with labels for each button and port.

1. **CLK/AMS Button:** Short press for clock display, long press to set time. In radio mode, short press for automatic station search.
2. **INT/EQ Button:** Short press for intro play (first 10 seconds of each track). Long press to cycle through EQ sound effects (Jazz, Rock, Pop, Classical, etc.).
3. **MUTE/Power Button:** Short press to mute/unmute audio. Long press to power the unit on/off.
4. **AUX-IN Port:** 3.5mm jack for connecting external audio devices.
5. **MIC:** Built-in microphone for Bluetooth hands-free calls.
6. **Volume Knob:** Rotate to adjust volume. Press to select functions in menu.
7. **USB Port:** For connecting USB flash drives for media playback and charging.
8. **TF Card Slot:** For inserting TF (MicroSD) cards for media playback.
9. **MOD/BND Button:** Short press to switch between modes (FM, Bluetooth, USB, SD, AUX). In radio mode, long press to switch between FM bands.
10. **RPT/Number 3 Button:** Short press for repeat play.
11. **RDM/Number 4 Button:** Short press for random play.
12. **Next Song/Search Button:** Short press for next track/station. Long press for fast forward.
13. **Previous Song/Search Button:** Short press for previous track/station. Long press for fast rewind.
14. **Display Screen:** Shows current time, radio frequency, track information, etc.
15. **Speakers:** Integrated speakers for audio output.

INSTALLATION

Dimensions



Image: Top-down view of the AV252B unit showing its length (178mm / 7 inches) and height (58mm / 2.3 inches).



Image: Side view of the AV252B unit showing its depth (54mm).

The installation size is 187mm x 49mm, suitable for standard 1-DIN center consoles. The unit's dimensions are approximately 178mm (length) x 58mm (height) x 54mm (depth).

Wiring Diagram

Refer to the following diagram for correct wiring connections. Incorrect wiring can cause damage to the unit or vehicle.



Image: A detailed wiring diagram for the car radio, showing connections for antenna, ignition switch, battery, and RCA audio outputs.

- **Yellow Wire:** Connect to the car's **battery positive (+)** (constant 12V).
- **Red Wire:** Connect to the car's **ACC ignition switch** (switched 12V).
- **Black Wire:** Connect to the car's **battery negative (-) / ground**
- **Blue Wire:** Connect to the **automatic antenna** (if applicable).
- **White RCA:** Left RCA audio output.
- **Red RCA:** Right RCA audio output.
- **Antenna Socket:** Connect to the vehicle's radio antenna.

Important: The car radio cannot be turned on if the red and yellow wires are not connected to the 12V power positive at the same time. Ensure the black wire is securely connected to ground.

Physical Installation Steps

Follow these general steps for installing the unit into your vehicle's dashboard. Specific vehicle models may vary.

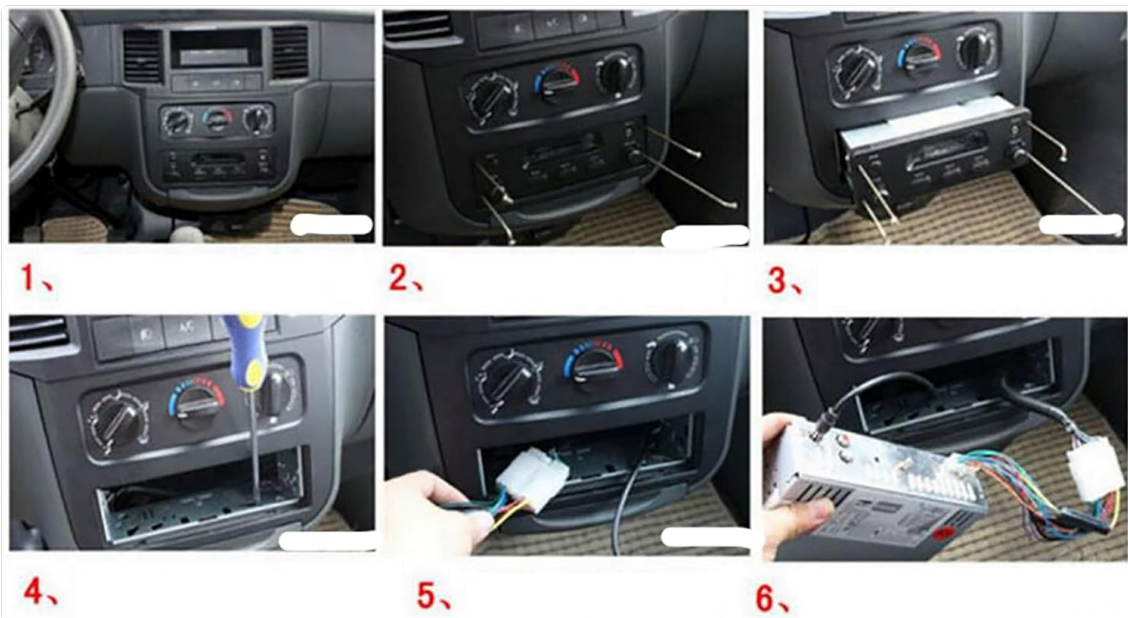


Image: A series of six images demonstrating the step-by-step process of removing an old car radio and installing a new one, including dashboard disassembly, wiring, and reassembly.

1. **Step 1:** Carefully remove the trim panels and screws securing the existing car radio or blank panel in your dashboard.
2. **Step 2:** Use removal tools to extract the old radio or the factory blanking plate from the dashboard slot.
3. **Step 3:** If applicable, install the mounting sleeve or cage into the dashboard opening.
4. **Step 4:** Disconnect any existing wiring from the old unit.
5. **Step 5:** Connect the wiring harness of the AV252B unit to your vehicle's wiring, following the wiring diagram provided above. Ensure all connections are secure.
6. **Step 6:** Carefully slide the AV252B unit into the dashboard opening until it clicks into place or is secured with screws. Reassemble any removed trim panels.

OPERATING INSTRUCTIONS

Power On/Off

Press and hold the **MUTE/Power** button to turn the unit on or off.

Volume Control

Rotate the **Volume Knob** clockwise to increase volume and counter-clockwise to decrease volume.

Mode Selection

Press the **MOD/BND** button repeatedly to cycle through available modes: FM Radio, Bluetooth, USB, SD Card, and AUX-in.

FM Radio Operation

- **Automatic Search:** In FM mode, long press the **CLK/AMS** button to automatically search for and store strong stations.
- **Manual Tuning:** Use the **Previous/Next Song/Search** buttons to manually tune to frequencies.

- **Band Selection:** Long press the **MOD/BND** button to switch between FM bands (FM1, FM2, FM3).

Bluetooth Pairing and Audio Playback

The unit features built-in Bluetooth 2.1 + EDR for hands-free calls and audio streaming.

1. Ensure the unit is powered on and in Bluetooth mode (select using **MOD/BND** button).
2. On your mobile device, enable Bluetooth and search for available devices.
3. Select "AV252B" (or similar name) from the list of devices to pair. No password is typically required.
4. Once paired, you can play audio from your device, and it will stream through the car audio player.
5. For hands-free calls, the built-in microphone will capture your voice.

USB/SD Card Playback

Insert a USB flash drive into the **USB Port** or a TF (MicroSD) card into the **TF Card Slot**. The unit will automatically switch to USB/SD mode and begin playing compatible audio files (MP3/WMA).

- Use the **Previous/Next Song/Search** buttons to navigate tracks.
- Press **RPT** for repeat play (e.g., repeat current track).
- Press **RDM** for random play.

AUX-in Operation

Connect an external audio device (e.g., smartphone, MP3 player) to the **AUX-IN Port** using a 3.5mm audio cable. Select AUX mode using the **MOD/BND** button. Audio will play through the car speakers.

EQ Sound Effects

Long press the **INT/EQ** button to cycle through preset equalizer settings such as Jazz, Rock, Pop, and Classical.

Setting the Clock

Short press the **CLK/AMS** button to display the time. Long press it to enter time setting mode. Use the **Volume Knob** to adjust hours and minutes, and press the knob to confirm.

MAINTENANCE

- **Cleaning:** Use a soft, dry cloth to clean the unit's surface. Do not use abrasive cleaners or solvents.
- **Dust:** Keep the USB and SD card slots free of dust and debris.
- **Temperature:** Avoid prolonged exposure to direct sunlight or extreme temperatures, which can affect the unit's lifespan.

TROUBLESHOOTING

Problem	Possible Cause	Solution
---------	----------------	----------

Problem	Possible Cause	Solution
Unit does not power on.	Incorrect wiring (Red/Yellow wires not connected to 12V, Black wire not grounded). Blown fuse.	Check all power connections (Red to ACC, Yellow to constant 12V, Black to ground). Check vehicle's fuse box and the unit's fuse.
No sound.	Volume too low. Mute function active. Speaker wires disconnected. Incorrect source selected.	Increase volume. Press MUTE button. Check speaker wiring. Select correct input mode (FM, BT, USB, AUX).
Poor FM radio reception.	Antenna not connected or damaged. Weak signal area.	Ensure antenna is securely connected. Try tuning to a stronger station or move to an area with better reception.
Bluetooth not connecting.	Unit not in Bluetooth mode. Device not discoverable. Already paired with another device.	Switch unit to Bluetooth mode. Ensure your mobile device's Bluetooth is on and discoverable. Disconnect from other devices.
USB/SD card not recognized.	Unsupported file format. Card/drive corrupted. Incorrectly inserted.	Ensure files are MP3/WMA format. Try a different USB/SD card. Reinsert the card/drive correctly.

SPECIFICATIONS

Feature	Specification
Model Number	AV252B
Input Voltage	12V DC
Output Power	60W x 4 (Max)
Bluetooth Version	2.1 + EDR
FM Frequency Range	87.5 - 108 MHz
Audio Formats Supported	MP3, WMA
Connectivity	Bluetooth, USB, TF Card, AUX-in, RCA Output
Impedance	4ohm / 8ohm
Frequency Response	20 - 20000Hz
Sensitivity	Less than 12dB
Dimensions (Unit)	180 x 42 x 50mm (approx.)
Panel Size	188 x 15 x 58mm (approx.)

WARRANTY AND SUPPORT

This product is covered by a standard manufacturer's warranty. For specific warranty terms, please refer to the documentation provided at the time of purchase or contact your retailer. For technical support or service inquiries, please reach out to your product vendor or the PolarLander customer service department.