



[Manuals.plus](#) /

> [Klaxon](#) /

> Klaxon Xylo Bar Cabinet (Model G0252IT0529) Instruction Manual

Klaxon G0252IT0529

Klaxon Xylo Bar Cabinet (Model G0252IT0529) Instruction Manual

INTRODUCTION

Welcome to your new Klaxon Xylo Bar Cabinet. This manual provides essential information for the assembly, operation, and maintenance of your bar cabinet. Please read these instructions carefully before beginning assembly or use to ensure safe and proper functionality.

PRODUCT OVERVIEW

The Klaxon Xylo Bar Cabinet is a versatile furniture piece designed for home bar setups. It features a rustic wood finish and a sturdy metal frame, offering both aesthetic appeal and functional storage for your beverages and bar accessories.

Key Features:

- **Premium Construction:** Crafted from durable engineered wood with a rustic finish and a robust industrial metal frame.
- **Multi-functional Design:** Includes stemware hangers, wine bottle shelves, open display shelves, and a serving counter.
- **Space-Saving:** Compact design suitable for various living spaces, including smaller rooms and apartments.
- **Secure Storage:** Features a mesh-door cabinet for enclosed storage, keeping bottles safe and dust-free.
- **Versatile Use:** Functions as a home bar, wine rack, serving cabinet, or even a coffee station.



Figure 1: Klaxon Xylo Bar Cabinet, main view. This image displays the overall design and storage capabilities of the unit, including the top serving surface, glass rack, wine rack, and enclosed cabinet.



► **GENEROUS BOTTLE CAPACITY**

Stores multiple liquor bottles across open shelves and enclosed cabinet for organized bar storage.

► **SMART STORAGE LAYOUT**

Includes open display shelves, wine bottle rack, and a mesh-door cabinet for versatile storage.

► **DURABLE METAL & WOOD BUILD**

Strong metal frame with engineered wood shelves ensures long-lasting stability.

► **MODERN MULTI-USE DESIGN**

Functions as a home bar, wine rack, or serving cabinet with a stylish industrial look.



Figure 2: Feature breakdown of the bar cabinet. This diagram visually identifies the glass rack, wine rack, visual enclosed cabinet, and two open shelves.

SAFETY INFORMATION

- Ensure all components are securely fastened before placing items on or in the cabinet.
- Do not overload shelves. Distribute weight evenly to maintain stability.
- Keep small parts and hardware away from children during assembly to prevent choking hazards.
- Place the cabinet on a level, stable surface to prevent tipping.
- Avoid climbing on or leaning heavily on the cabinet.

PACKAGE CONTENTS

Before beginning assembly, carefully unpack all components and verify that all parts are present and undamaged. Refer to the included hardware list in your product packaging.

- Engineered wood panels (top, shelves, cabinet sides)
- Metal frame components
- Mesh cabinet door
- Wine glass holders
- Hardware (screws, bolts, Allen wrench, etc.)
- Assembly instructions (separate document, if provided in packaging)

ASSEMBLY INSTRUCTIONS

Estimated Assembly Time: 60-90 minutes (2 people recommended for easier assembly)

Tools Required: Phillips head screwdriver (not included), Allen wrench (included with hardware).

Important: Basic assembly is required. Please refer to the detailed assembly guide included in your product packaging for step-by-step instructions and diagrams. If you encounter difficulties, contact customer support

for assistance.

1. **Unpack Components:** Carefully remove all parts from the packaging and lay them out on a clean, soft surface (e.g., a blanket or carpet) to prevent scratches.
2. **Identify Parts:** Match all components with the parts list provided in the separate assembly guide. Ensure all hardware is accounted for.
3. **Assemble Frame:** Begin by connecting the metal frame components using the provided screws and Allen wrench. Do not fully tighten screws until all parts are aligned.
4. **Attach Wood Panels:** Secure the engineered wood shelves and top surface to the metal frame using the appropriate hardware.
5. **Install Wine Rack and Glass Holders:** Attach the wine bottle rack and stemware hangers to their designated positions as indicated in the assembly guide.
6. **Assemble Cabinet Door:** Attach the mesh cabinet door to the designated section, ensuring proper alignment and smooth operation.
7. **Final Tightening:** Once all components are in place and aligned, securely tighten all screws and fasteners.
8. **Placement:** Carefully move the assembled cabinet to its desired location, ensuring it is stable and level.

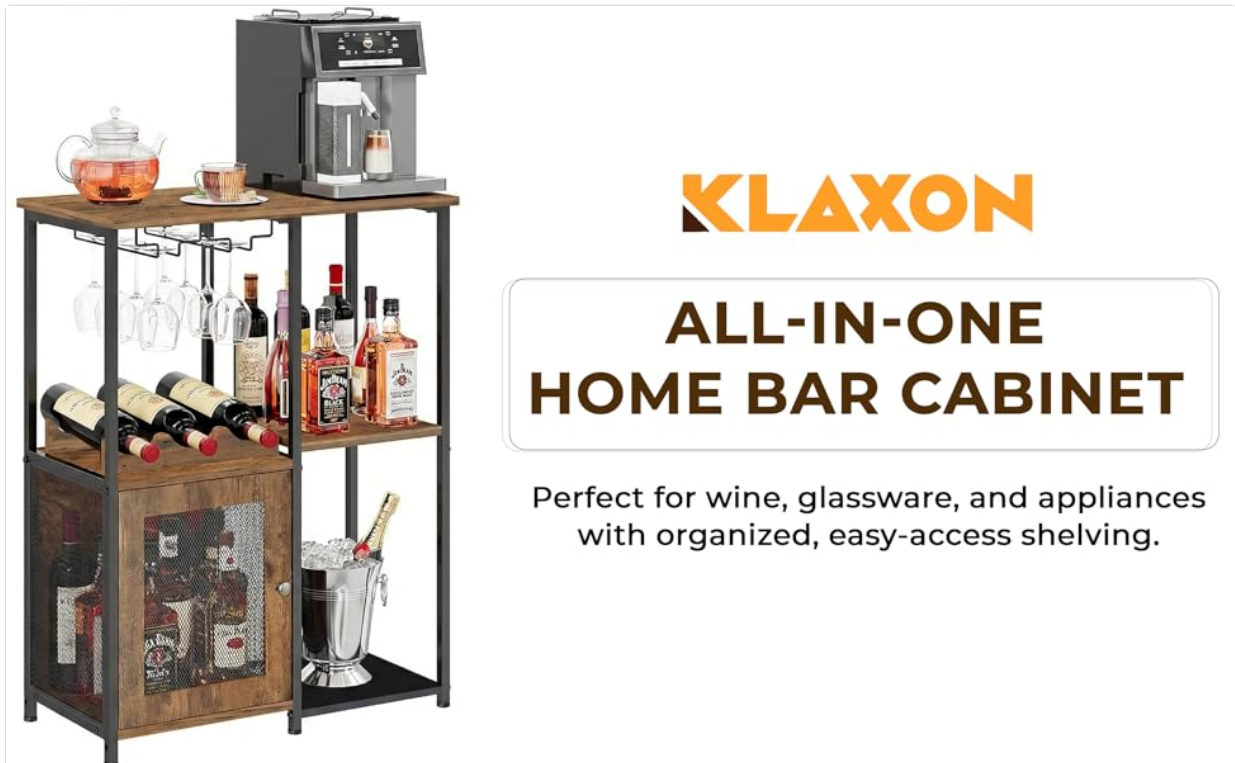


Figure 3: Dimensions of the Klaxon Xylo Bar Cabinet. This technical drawing provides measurements in millimeters, useful for planning placement and understanding component sizes during assembly.



Figure 4: Detail of wine glass holders and wine rack. This image shows the capacity and design of the integrated storage for wine glasses and bottles.

OPERATING INSTRUCTIONS

Using the Bar Cabinet:

- **Top Surface:** Utilize the sturdy top surface for serving drinks, preparing cocktails, or displaying decorative items.
- **Wine Glass Holders:** Hang wine glasses upside down in the designated slots for convenient access and to keep them dust-free. The holders can accommodate various stemware sizes.
- **Wine Rack:** Store wine bottles horizontally in the integrated wine rack. This orientation helps keep corks moist, preserving the wine's quality.
- **Open Shelves:** Use the open shelves for storing liquor bottles, bar tools, mixers, or other beverages you wish to display.
- **Enclosed Cabinet:** The mesh-door cabinet provides secure and dust-free storage for valuable bottles, glassware, or items you prefer to keep out of sight.

MAINTENANCE

- **Cleaning:** Wipe all surfaces with a soft, damp cloth. For stubborn marks, a mild soap solution can be used, followed by drying with a clean cloth. Avoid harsh chemicals, abrasive cleaners, or scouring pads, as these can damage the finish.
- **Spills:** Clean up any spills immediately, especially on wood surfaces, to prevent staining or water damage.
- **Dusting:** Regularly dust all surfaces to maintain the cabinet's appearance and prevent dust buildup.
- **Hardware Check:** Periodically check and tighten all screws and fasteners to ensure the cabinet remains stable and secure.
- **Avoid Direct Sunlight:** Prolonged exposure to direct sunlight may cause fading or warping of the wood components. Position the cabinet away from direct sunlight or use window coverings.

TROUBLESHOOTING

Common Issues and Solutions:

- **Cabinet feels wobbly:** Ensure all screws and fasteners are fully tightened. Verify that the cabinet is placed on a level surface. If applicable, adjust any leveling feet at the bottom of the cabinet.
- **Cabinet door does not close properly:** Check the hinges for proper alignment. Loosen hinge screws slightly, adjust the door position, and then re-tighten. Ensure no obstructions are preventing the door from closing fully.
- **Minor scratches on surface:** For superficial scratches on wood surfaces, a wood repair marker or furniture polish designed for rustic finishes may help. For deeper scratches or significant damage, professional repair may be required.
- **Missing or damaged parts:** If you find any parts missing or damaged upon unpacking, do not proceed with assembly. Contact customer support immediately for replacement parts.

SPECIFICATIONS

Feature	Detail
Brand	Klaxon
Model Number	G0252IT0529
Colour	Forest
Size	Standard
Material	Engineered Wood
Product Dimensions (D x W x H)	32D x 60.5W x 78H Centimeters
Mounting Type	Floor Standing
Style	Modern
Item Weight	20 Kilograms
Assembly Required	Yes (Basic assembly)
Included Components	Hardware
Country of Origin	India

WARRANTY INFORMATION

This product is covered by the manufacturer's standard warranty. Please refer to the warranty card or documentation included with your purchase for detailed information regarding warranty terms, conditions, and duration. For any warranty claims, retain your proof of purchase.

CUSTOMER SUPPORT

For assistance with assembly, missing parts, troubleshooting, or any other inquiries regarding your Klaxon Xylo Bar Cabinet, please contact Klaxon customer support.

Manufacturer: Krios Building Materials PVT LTD

Online Store: [Visit the Klaxon Store on Amazon.in](#)

Please have your model number (G0252IT0529) and purchase details ready when contacting support to ensure efficient service.