



[Manuals.plus](#) /

› [RAINPOINT](#) /

› RAINPOINT 4-Zone Programmable Watering Timer (Model iob447) User Manual

RAINPOINT iob447

RAINPOINT 4-Zone Programmable Watering Timer User Manual

MODEL: IOB447

Introduction

Thank you for choosing the RAINPOINT 4-Zone Programmable Watering Timer. This device is designed to automate your garden and lawn irrigation, providing flexible and efficient watering schedules for up to four independent zones. Please read this manual carefully to ensure proper installation, operation, and maintenance of your watering timer.

Product Features

- **4 Individual Programmable Zones:** Customize watering schedules (start time, duration, frequency) for each zone independently.
- **Multiple Watering Cycle Modes:** Set watering duration from 1 minute to 3 hours 59 minutes, and frequency for every 8 hours, every 12 hours, or every 1 to 7 days.
- **Rain Delay Function:** Skip watering for 24, 48, or 72 hours to conserve water during rainy periods.
- **Manual Watering Mode:** Initiate watering instantly for 1 minute to 8 hours without affecting programmed schedules.
- **Easy Programming:** Features a large 3.4-inch LCD screen, a large dial, and clear buttons for intuitive setup.
- **Durable Construction:** Equipped with solid brass inlet and outlet, leak-proof sealing rings, and an IP65 waterproof rating for outdoor use.
- **Upgraded Coil Valve:** Provides stronger water pressure and wider coverage compared to standard valves.
- **Low Power Protection:** Valves automatically close when battery power is low to prevent water waste.

UPGRADED COIL VALVE



RAINPOINT

- ✓ Coil Valve
- ✓ 30% Stronger Water Pressure
- ✓ Wider Coverage



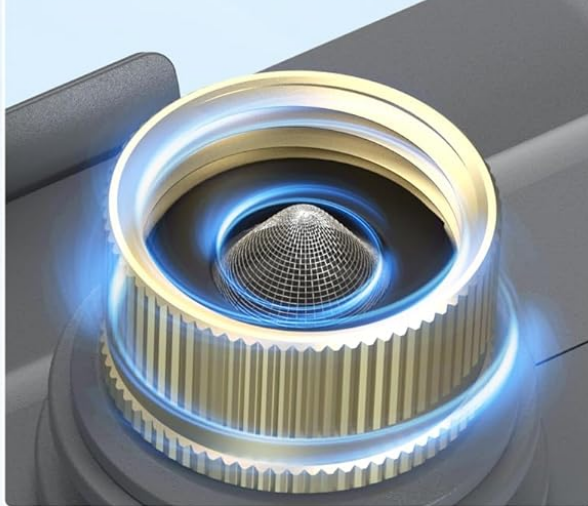
OTHERS

- Normal Valve
- Significant water pressure drop
- Reduced spray distance

Figure 1: Comparison of RAINPOINT's upgraded coil valve system with a standard valve, highlighting improved water pressure and coverage.

DURABLE AND LONG-LASTING

Solid Brass Inlet & Outlet



Leak-proof sealing ring



IP65

Waterproof Rating



Figure 2: Close-up views of the solid brass inlet and outlet, leak-proof sealing ring, and the IP65 waterproof rating of the timer.

Package Contents

- RAINPOINT 4-Zone Programmable Watering Timer
- User Manual
- Standard 3/4-inch faucet adapter (if applicable)

Setup and Installation

1. **Battery Installation:** Open the battery compartment on the back of the timer. Insert two (2) AA alkaline

batteries (not included), ensuring correct polarity. Close the compartment securely.

2. **Connect to Faucet:** Screw the timer onto a standard 3/4-inch outdoor faucet. Ensure the connection is tight to prevent leaks. It is recommended to use a short hose between the faucet and the timer to reduce stress on the faucet connection and allow for easier positioning.
3. **Connect Hoses:** Attach your garden hoses to the four independent outlets (Zone 1, Zone 2, Zone 3, Zone 4) at the bottom of the timer. Ensure each connection is secure.
4. **Initial Power On:** The LCD screen will light up, and the timer will be ready for programming.



Figure 3: The 4-zone watering timer connected to a faucet, showing the large LCD display and dial for easy setup.

4 INDEPENDENT ZONES

Open One Valve One By One

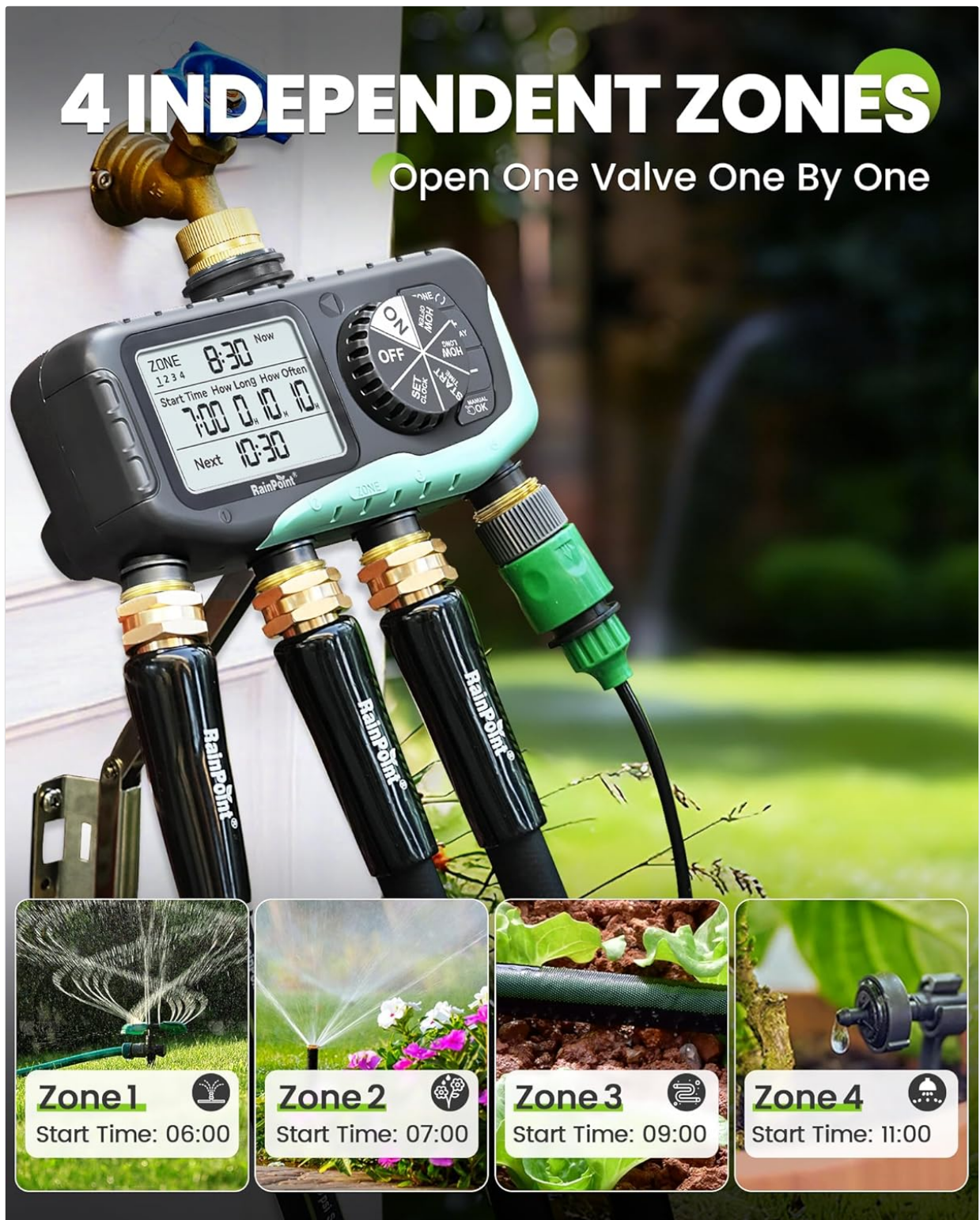


Figure 4: The timer connected to a faucet with four hoses, demonstrating how each zone can be used for different irrigation needs.

Operating Instructions

1. Setting Current Time

Rotate the dial to the 'SET CLOCK' position. Use the '+' and '-' buttons to adjust the current time. Press 'OK' to confirm and move to the next setting (e.g., AM/PM or 24-hour format). Rotate the dial away from 'SET CLOCK' to save.

2. Programming Watering Schedules (for each zone)

The timer allows individual programming for each of its four zones.

- Select Zone:** Rotate the dial to 'PROGRAM'. Use the 'ZONE' button to select the desired zone (1, 2, 3, or 4) you wish to program.
- Set Start Time:** Use the '+' and '-' buttons to set the desired watering start time for the selected zone. Press 'OK' to confirm.
- Set Watering Duration:** Use the '+' and '-' buttons to set how long the watering will last (from 1 minute to 3 hours 59 minutes). Press 'OK' to confirm.
- Set Frequency:** Use the '+' and '-' buttons to set how often the watering will occur (e.g., every 8 hours, every 12 hours, or every 1 to 7 days). Press 'OK' to confirm.
- Repeat steps a-d for each zone you wish to program. Rotate the dial to 'ON' to activate the programmed schedules.

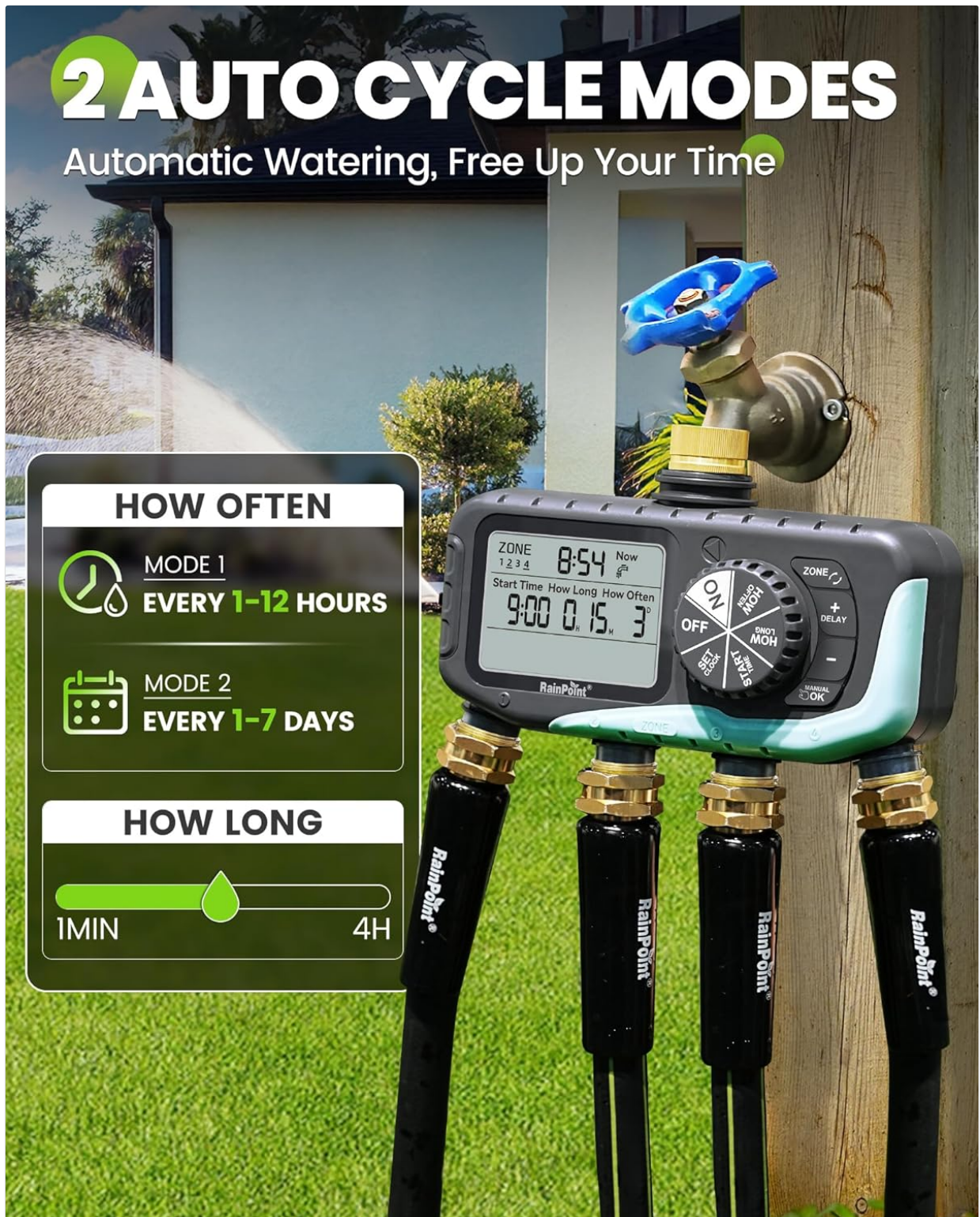


Figure 5: The timer display showing options for setting watering frequency (every 1-12 hours or every 1-7 days) and duration (1 minute to 4 hours).

3. Rain Delay Function

To temporarily pause watering due to rain:

- a. Rotate the dial to 'ON'.
- b. Press the 'DELAY' button.
- c. Use the '+' or '-' buttons to select the desired delay duration (24, 48, or 72 hours).
- d. Press 'OK' to confirm. The timer will resume its programmed schedule after the delay period.

4. Manual Watering

To water immediately without affecting your programmed schedule:

- a. Rotate the dial to 'ON'.
- b. Press the 'MANUAL/OK' button.
- c. Use the '+' or '-' buttons to set the desired manual watering duration (from 1 minute to 8 hours).
- d. Press 'OK' to start manual watering. The timer will automatically return to its programmed schedule after the manual watering duration ends.



RAIN DELAY

Skip watering when it rains, avoid overwatering



MANUAL WATERING

Manual start anytime without watering schedule disruption



Figure 6: The timer display showing the Rain Delay mode and the manual watering duration setting.

5. Low Power Protection

When the battery level is critically low, the timer's valves will automatically close to prevent continuous water flow and waste. Replace batteries promptly when the low battery indicator appears on the screen.

LOW POWER PROTECTION

Valves will close when power low to prevent water waste

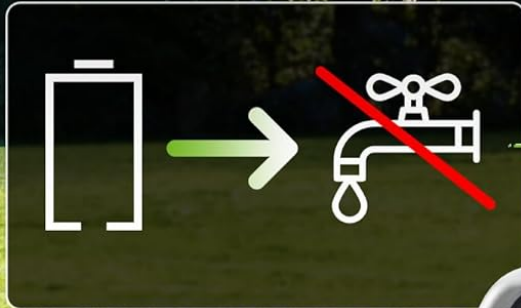


Figure 7: An illustration showing the low power icon and how the valves automatically close to prevent water waste when battery is low.

Maintenance

- **Cleaning:** Periodically wipe the timer's exterior with a soft, damp cloth. Do not use abrasive cleaners or solvents.
- **Battery Replacement:** Replace batteries annually or when the low battery indicator appears. Always use fresh AA alkaline batteries.
- **Winterization:** Before the first frost, disconnect the timer from the faucet and hoses. Drain any remaining water and store the unit indoors in a dry, protected area to prevent freezing damage.
- **Check Washers:** Regularly inspect the rubber washers in the inlet and outlet connections for wear or

damage. Replace if necessary to prevent leaks.

Troubleshooting

- **No Water Flow or Partial Flow:**
 - Check battery level and replace if low.
 - Ensure the faucet is fully open.
 - Verify that the watering schedule is correctly programmed and activated ('ON' mode).
 - Inspect hose connections for kinks or blockages.
 - Check the timer's inlet filter for debris.
- **Leaks from Connections:**
 - Ensure all connections (faucet, hoses) are tightened securely.
 - Check rubber washers for proper seating and damage; replace if worn.
- **Display Fading or Not Working:**
 - Replace batteries with fresh ones.
 - Avoid prolonged exposure to direct sunlight, which can degrade LCD screens over time. Consider shielding the display if installed in a very sunny area.
- **Water Hammer (Pipes Clanging):**
 - This can occur when valves close rapidly. Consider installing a water hammer arrester between the faucet and the timer.
- **Timer Not Responding:**
 - Remove batteries for a few minutes, then reinsert them to reset the device. Reprogram as needed.

Specifications

Model Number	iob447
Brand	RAINPOINT
ASIN	B0G32Z1HMB
Material	Plastic, Brass
Color	Blue
Product Dimensions (L x W x H)	2.54 x 2.54 x 2.54 cm (approx. 1 x 1 x 1 inch); 317.51 grams
Screen Size	3.4 Inches
Number of Settings	7 (referring to programming options)
Waterproof Rating	IP65
Power Source	2 x AA Alkaline Batteries (not included)

Warranty and Support

RAINPOINT products are designed for reliability and performance. For warranty information, technical support, or any questions regarding your 4-Zone Programmable Watering Timer, please contact RAINPOINT customer service through the official website or your retailer's support channels. Please have your model number (iob447) and purchase information ready when contacting support.